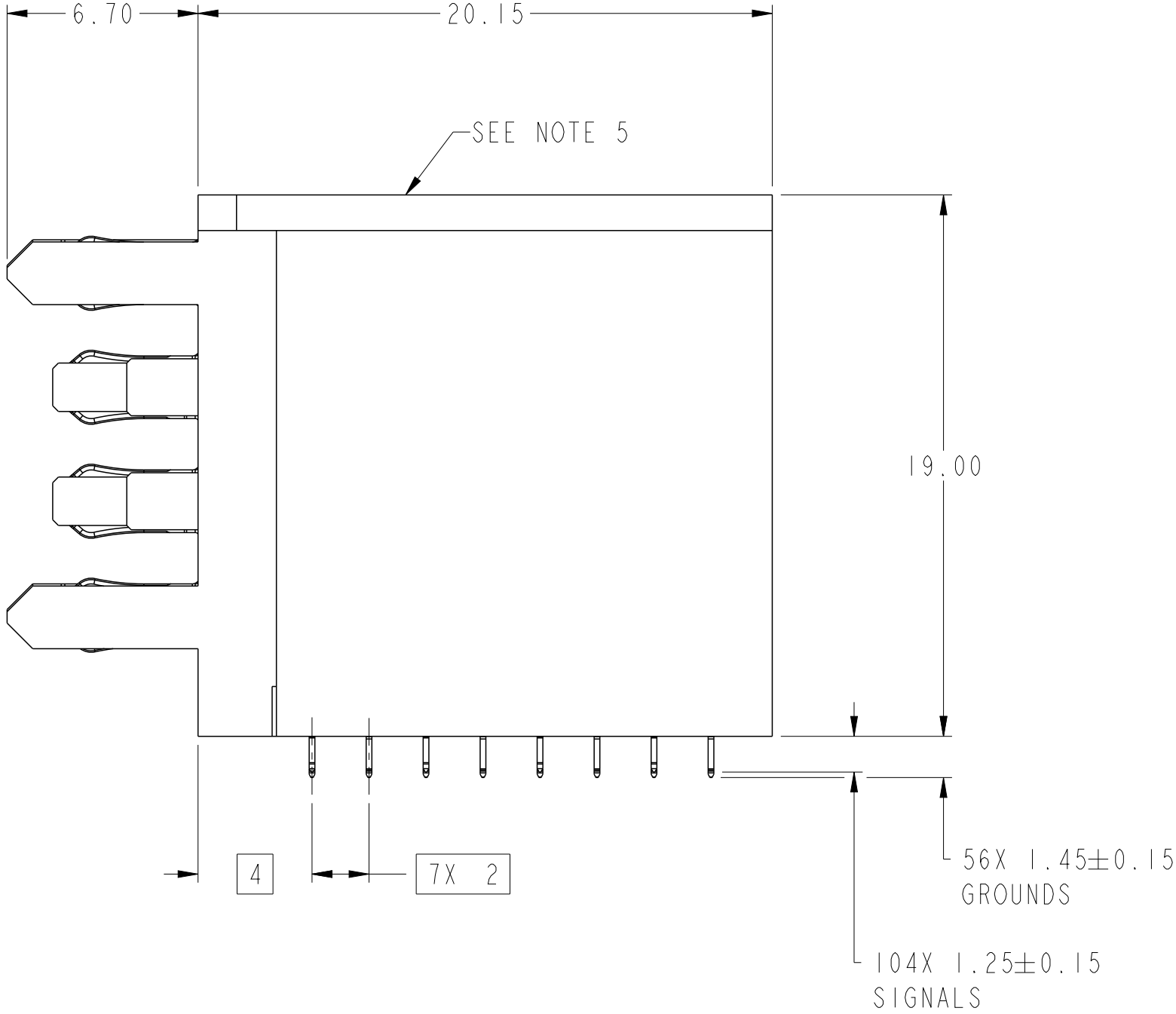
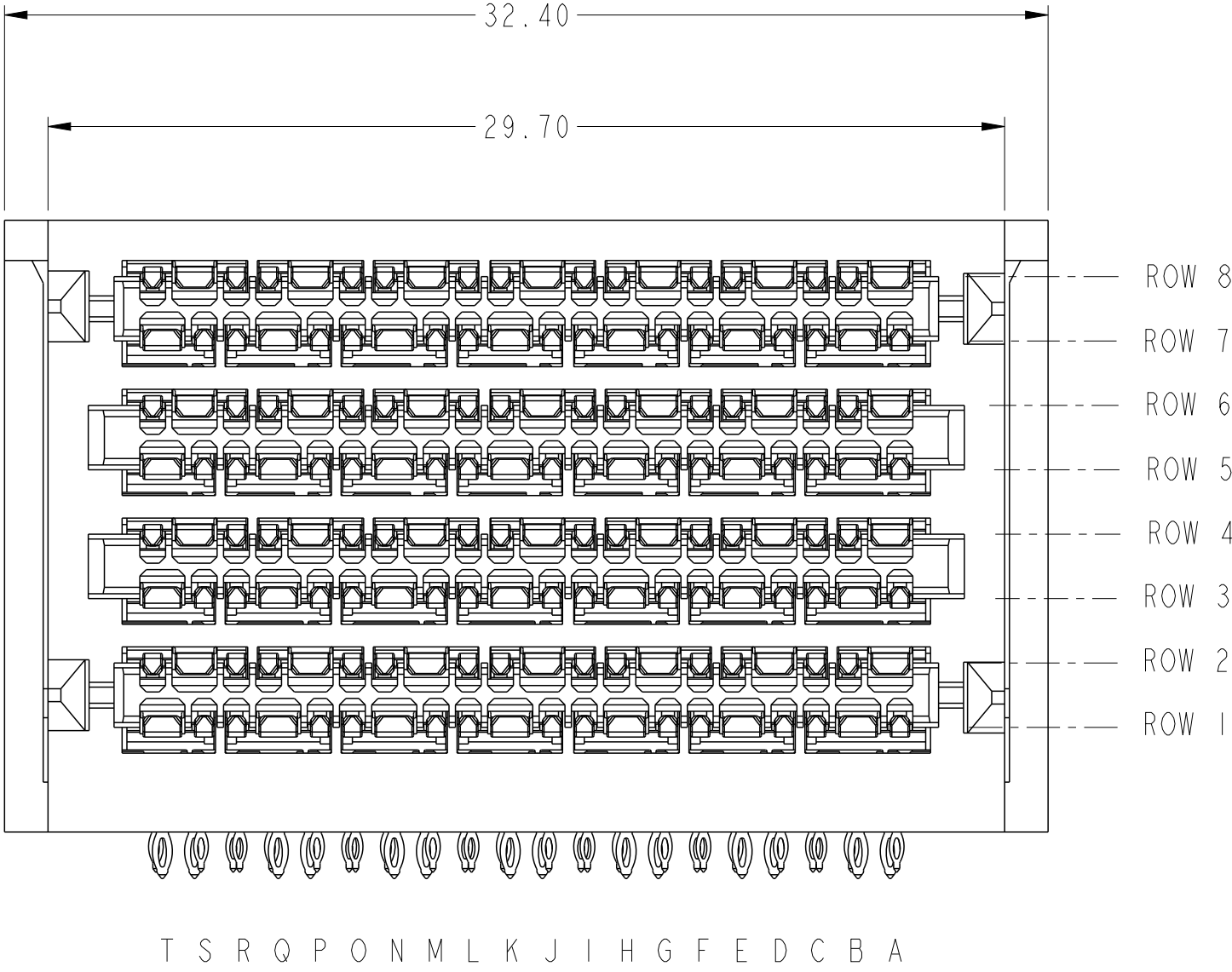


Amphenol
FCI

© 2016 AFCI

PRODUCT NUMBER	DESCRIPTION
10129470-102LF	NO GUIDE PIN, NO PCB SCREW MOUNTS

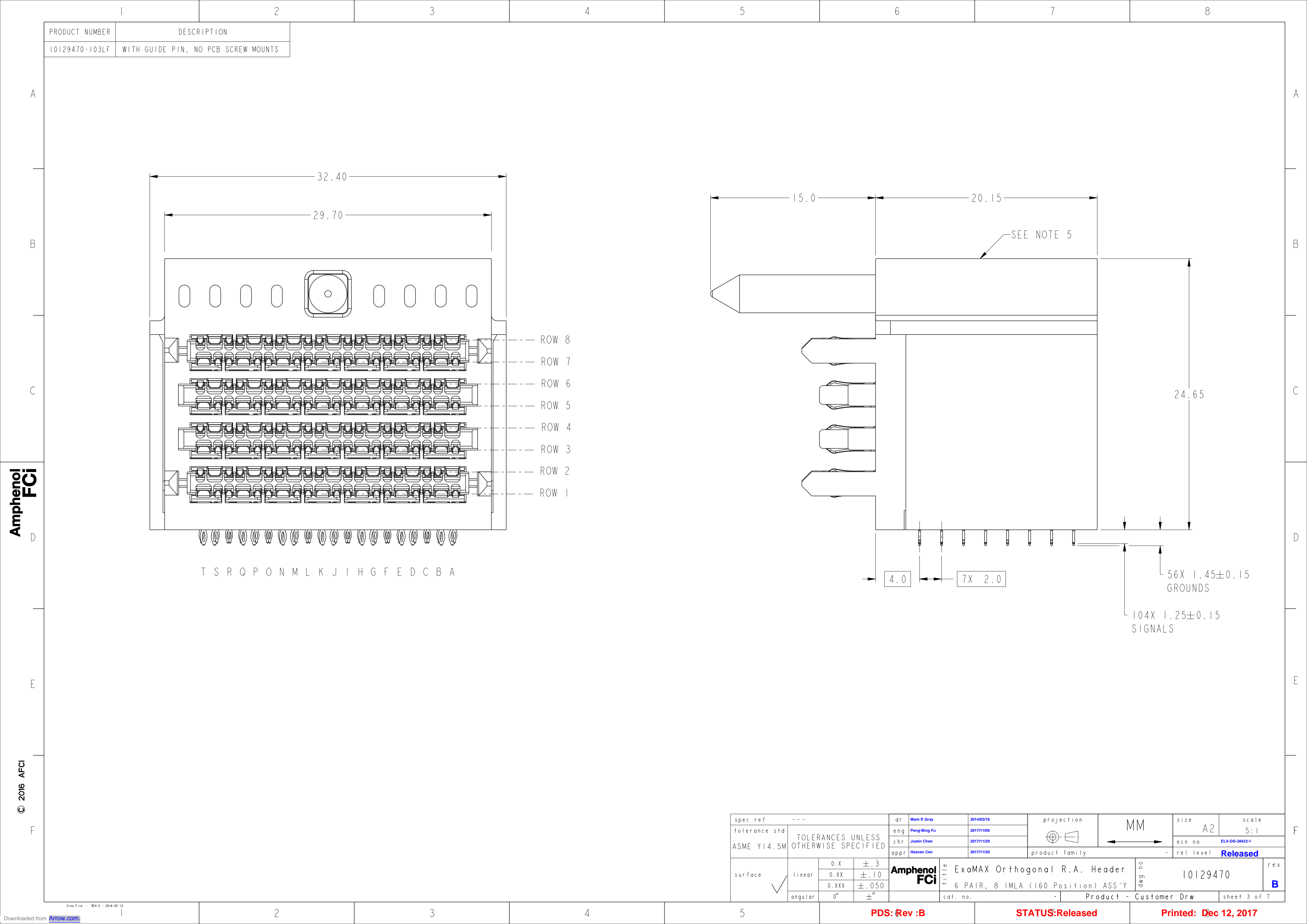


spec ref	---	dr	Mark R Gray	2014/03/18	projection	MM	size	A2	scale	5:1
tolerance std	ASME Y14.5M	eng	Peng-Bing Fu	2017/11/09	chr	Justin Chen	ecn no	ELX-DG-28422-1	rel level	Released
surface	✓	appr	Heaven Cen	2017/11/30	product family	-	cat. no.	-	Product - Customer Drw	sheet 2 of 7
linear	0.X ±.3 0.XX ±.10 0.XXX ±.050	Amphenol FCI	title	ExaMAX Orthogonal R.A. Header 6 PAIR, 8 IMLA (160 Position) ASS'Y	dwg no	10129470	rev	B		
angular	0° ±°									

PDS: Rev :B

STATUS:Released

Printed: Dec 12, 2017



PRODUCT NUMBER	DESCRIPTION
10129470-103LF	WITH GUIDE PIN, NO PCB SCREW MOUNTS

spec ref	---	dr	Mark R Gray	2014/03/18	projection	MM	size	A2	scale	5:1
tolerance std	ASME Y14.5M	eng	Peng-Bing Fu	2017/11/09	chr	Justin Chen	2017/11/29	ecn no	ELX-DG-28422-1	
		appr	Heaven Cen	2017/11/30	product family	-	rel level	Released		
surface	✓	linear	0.X	±.3	Amphenol FCI	title	ExaMAX Orthogonal R.A. Header	dwg no	10129470	rev
			0.XX	±.10			6 PAIR, 8 IMLA (160 Position) ASS'Y			B
			0.XXX	±.050						
		angular	0°	±°		cat. no.	-	Product - Customer Drw	sheet 3 of 7	

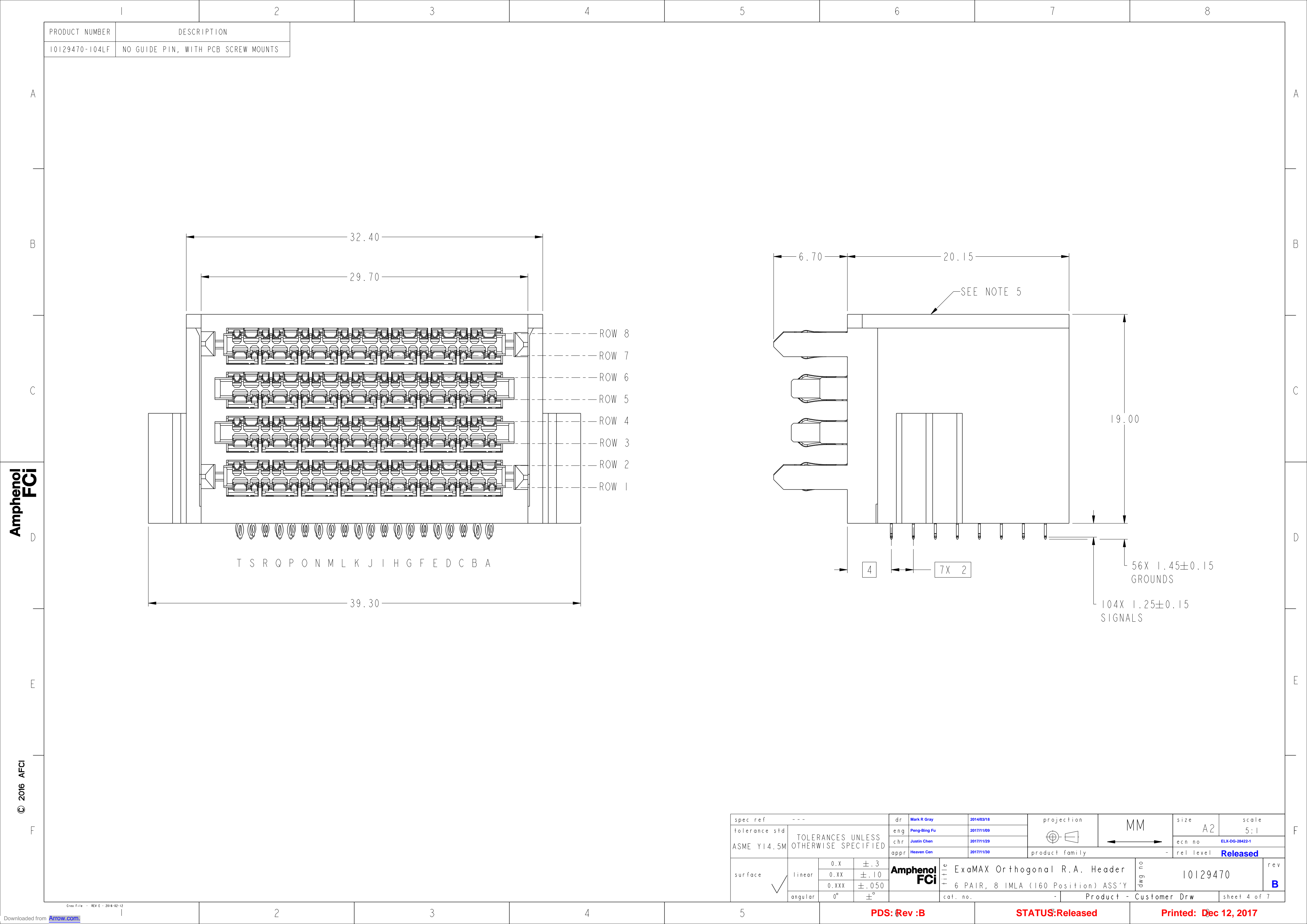
Amphenol
FCI

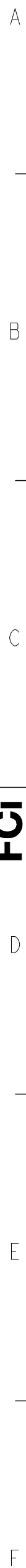
© 2016 APCI

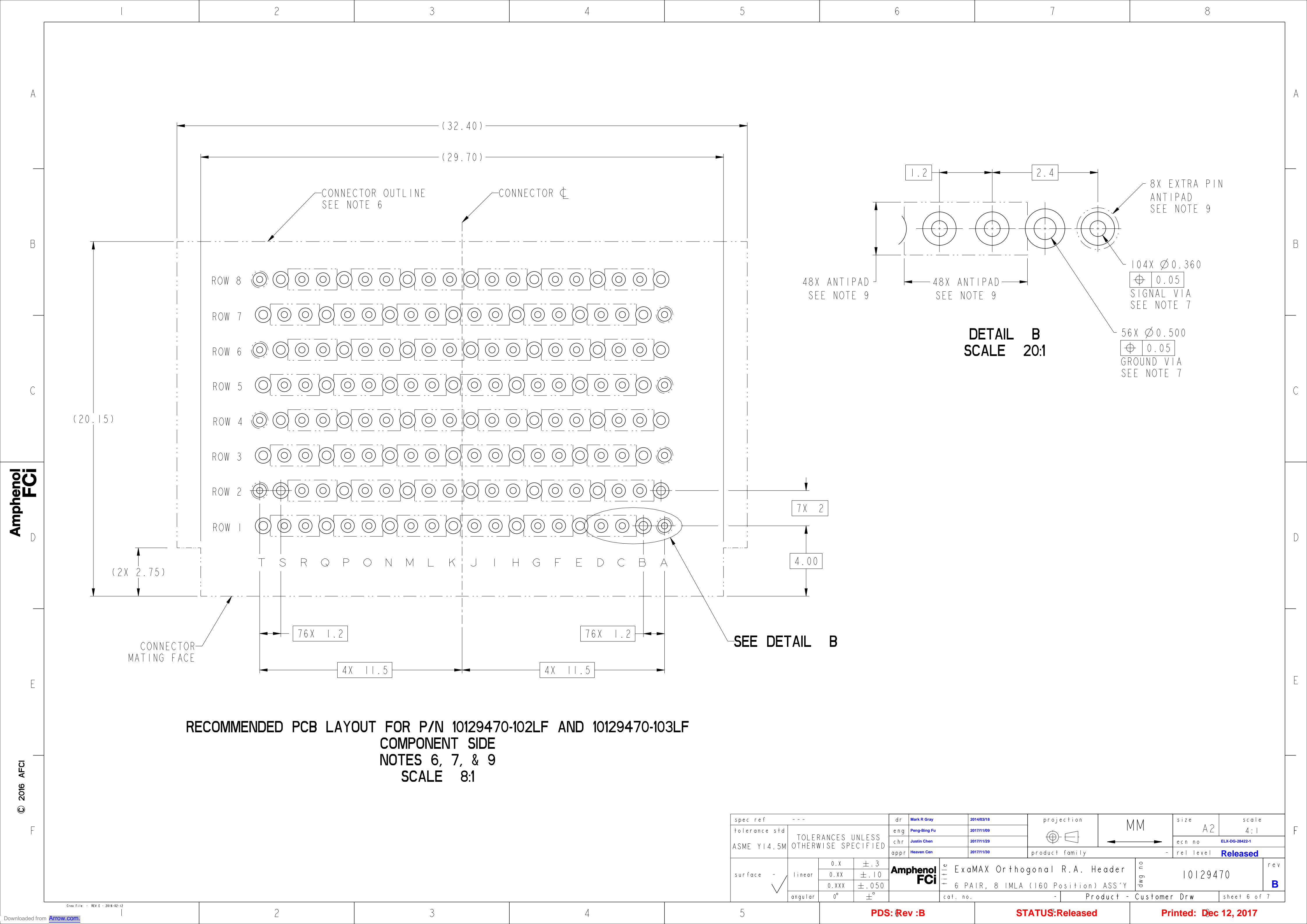
PDS: Rev :B

STATUS:Released




Printed: Dec 12, 2017







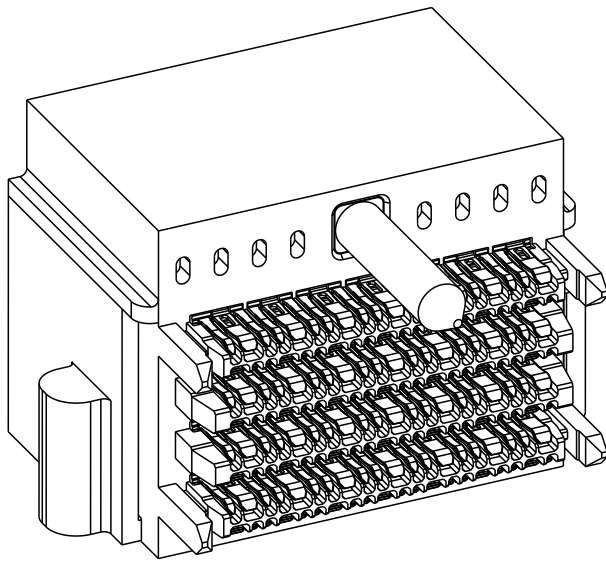
RECOMMENDED PCB LAYOUT FOR P/N 10129470-102LF AND 10129470-103LF
COMPONENT SIDE
NOTES 6, 7, & 9
SCALE 8:1

spec ref		---		dr		Mark R Gray		2014/03/18		projection		MM		size		A2		scale		4:1	
tolerance std		TOLERANCES UNLESS OTHERWISE SPECIFIED		eng		Peng-Bing Fu		2017/11/09						ecn no		ELX-DG-28422-1					
chr				Justin Chen		2017/11/29		product family						-		rel level		Released			
ASME Y14.5M				appr		Heaven Cen		2017/11/30													
surface - 		linear		0.X ±.3 0.XX ±.10 0.XXX ±.050		Amphenol FCI		title		ExaMAX Orthogonal R.A. Header 6 PAIR, 8 IMLA (160 Position) ASS'Y		dwg no		10129470		rev		B			
		angular		0° ±°				cat. no.		-		Product - Customer Drw		sheet 6 of 7							

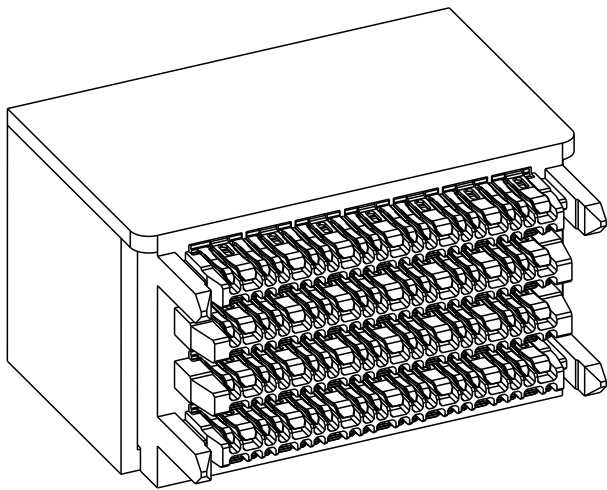
NOTES:

- 1 - CONNECTOR MATERIALS:
FRONT HOUSING: HIGH TEMP THERMOPLASTIC, BLACK, UL94-V0
ORGANIZER: HIGH TEMP THERMOPLASTIC, BLACK, UL94-V0
IMLA PLASTIC: HIGH TEMP THERMOPLASTIC, BLACK, UL94-V0
CONTACT: COPPER ALLOY
GUIDE PIN: STAINLESS STEEL
MACHINE SCREW AND LOCK WASHER: STAINLESS STEEL
- 2 - CONTACT PLATING:
SEPARABLE INTERFACE:
PERFORMANCE-BASED PLATING, QUALIFIED TO MEET THE
REQUIREMENTS OF FCI PRODUCT SPECIFICATION GS-12-1096
INCLUDING TELCORDIA GR-1217-CORE (NOVEMBER 1995)
CENTRAL OFFICE TEST SEQUENCE

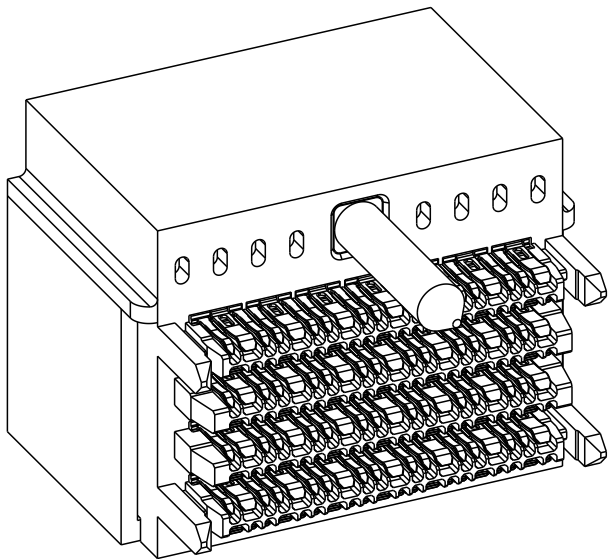
PRESS-FIT TAILS: TIN OVER NICKEL (LEAD FREE)
- 3 - PRODUCT SPECIFICATION: GS-12-1096
- 4 - PACKAGING MEETS GS-14-920 LEAD FREE LABELING
SPECIFICATION.
- 5 - PRODUCT MARKING, (PART NUMBER & LOT CODE), ON THIS SURFACE.
- 6 - CONNECTOR OUTLINE MAY BE SCREEN PRINTED ONTO CUSTOMER PCB TO
BE USED AS A GUIDE FOR MANUAL CONNECTOR PLACEMENT.
- 7 - REFER TO CUSTOMER DRAWING 10119933 FOR INFORMATION
ON PCB HOLE DIAMETERS AND PLATING OPTIONS
- 8 - LEAD FREE PRODUCT MEETS THE EUROPEAN UNION DIRECTIVES &
OTHER COUNTRY REGULATIONS AS DESCRIBED IN GS-47-0004
- 9 - REFER TO ROUTING GUIDE GS-20-0511 FOR RECOMMENDATIONS
ON OPTIMIZATION OF FOOTPRINT AND TRACE ROUTING LAYOUT.
- 10 - IT IS RECOMMENDED THAT CONNECTORS WITH THE OPTIONAL SCREW MOUNTS USE A
TRI-ROUNDULAR, OR TRILOBULAR® SHAPED M1.91 OR M2 THREAD FORMING SCREW DESIGNED
SPECIFICALLY FOR PLASTIC MATERIAL TO SECURE THE CONNECTOR TO THE PCB. THE
SCREW LENGTH SHOULD BE 4.00mm TO 8.00mm LONG PLUS THE BOARD THICKNESS.
- 11 - THE CONNECTOR WILL WITHSTAND EXPOSURE TO 260°C PEAK TEMPERATURE FOR 10-30
SECONDS IN A CONVECTION, INFRA-RED, OR VAPOR PHASE REFLOW OVEN.



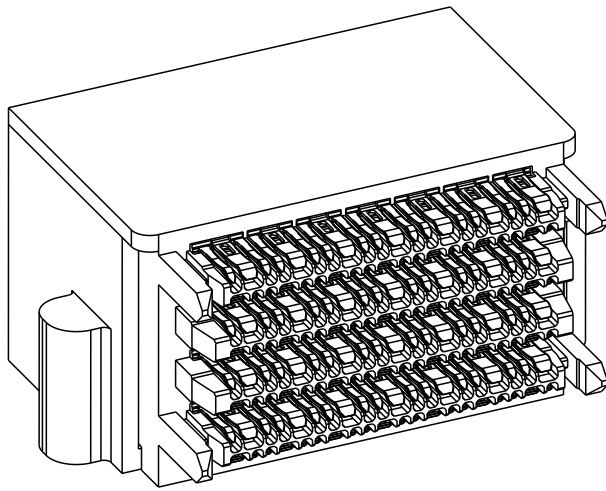
10129470-101LF



10129470-102LF



10129470-103LF



10129470-104LF

spec ref		---		dr		Mark R Gray		2014/03/18		projection		<div>MM</div>		size		A2		scale		2:1																			
tolerance std		TOLERANCES UNLESS OTHERWISE SPECIFIED				eng		Peng-Bing Fu		2017/11/09		<div></div>		<div>←</div>		ecn no		ELX-DG-28422-1																					
ASME Y14.5M						chr		Justin Chen		2017/11/29																													
						appr		Heaven Cen		2017/11/30																													
										product family																													
surface		<div>✓</div>		linear		0.X		±.3		Amphenol FCI		title		ExaMAX Orthogonal R.A. Header 6 PAIR, 8 IMLA (160 Position) ASS'Y								dwg no		10129470		rev		B											
																														0.XX		±.10							
																														0.XXX		±.050							
																														angular		0°		±°					
										cat. no.										Product - Customer Drw										sheet 7 of 7									