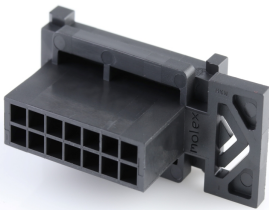




Part Number : [443001400](#)
Product Description : Micro-Fit BMI Plug
Housing, Dual Row, Panel Mount, 14 Circuits,
Black
Series Number : 44300
Status : Active
Product Category : Connector Housings



Documents & Resources


Drawings
[Drawing 443001400_sd.pdf](#)

3D Models and Design Files
[3D Model 443001400_stp.zip](#)

Specifications
[Application Specification 443000001-AS-000.pdf](#)
[Packaging Specification PK-44300-001-001.pdf](#)
[Product Specification PS-44300-001-001.pdf](#)
[Test Summary TS-43045-001-001.pdf](#)
[Test Summary TS-43045-002-001.pdf](#)
[Test Summary TS-44300-001-001.pdf](#)
[Test Summary TS-46235-001-001.pdf](#)

Product Environment Compliance

Compliance

GADSL/IMDS	Not Relevant
China RoHS	
EU ELV	Not Relevant
Low-Halogen Status	Low-Halogen per IEC 61249-2-21
REACH SVHC	Not Contained per D(2023)8585-DC (23 Jan 2024)
EU RoHS	Compliant per EU 2015/863

Multiple Part Product Compliance Statements
- Eu RoHS
- REACH SVHC

- Low-Halogen

Multiple Part Industry Compliance Documents

- IPC 1752A Class C

- IPC 1752A Class D

- Molex Product Compliance Declaration

- IEC-62474

- chemSHERPA (xml)

EU RoHS Certificate of Compliance

Part Details

General

Status	Active
Category	Power and Signal Cable Assemblies
Series	215347
Description	Pre-Crimped Lead Squba 3.6 Male-to-Squba 3.6 Male, Tin (Sn) Plating, 300.00mm Length, 16 AWG, Black
Assembly Configuration	Pre-crimped Lead Only
Connector to Connector	Squba Crimp Terminals
Product Family	Off-the-Shelf Pre-Crimped Leads
Product Name	Squba
UPC	195842349742

Electrical

Current - Maximum per Contact	14.0A
Voltage - Maximum	600V

Physical

Cable Length	300.00mm
Circuits (Loaded)	1
Circuits (maximum)	1
Color - Resin	Black
Gender	Male-Male
Material - Metal	Copper Alloy
Material - Plating Mating	Matte Tin
Material - Resin	Modified Polystyrene

Net Weight	4.997/g
Number of Rows	1
Packaging Type	Bag
Pitch - Mating Interface	3.60mm
Plating min - Mating	2.540µm
Single Ended	No
Termination Interface Style	Crimp or Compression
Wire/Cable Type	UL 11028
Wire Insulation Diameter	1.90mm-2.40mm
Wire Size (AWG)	16