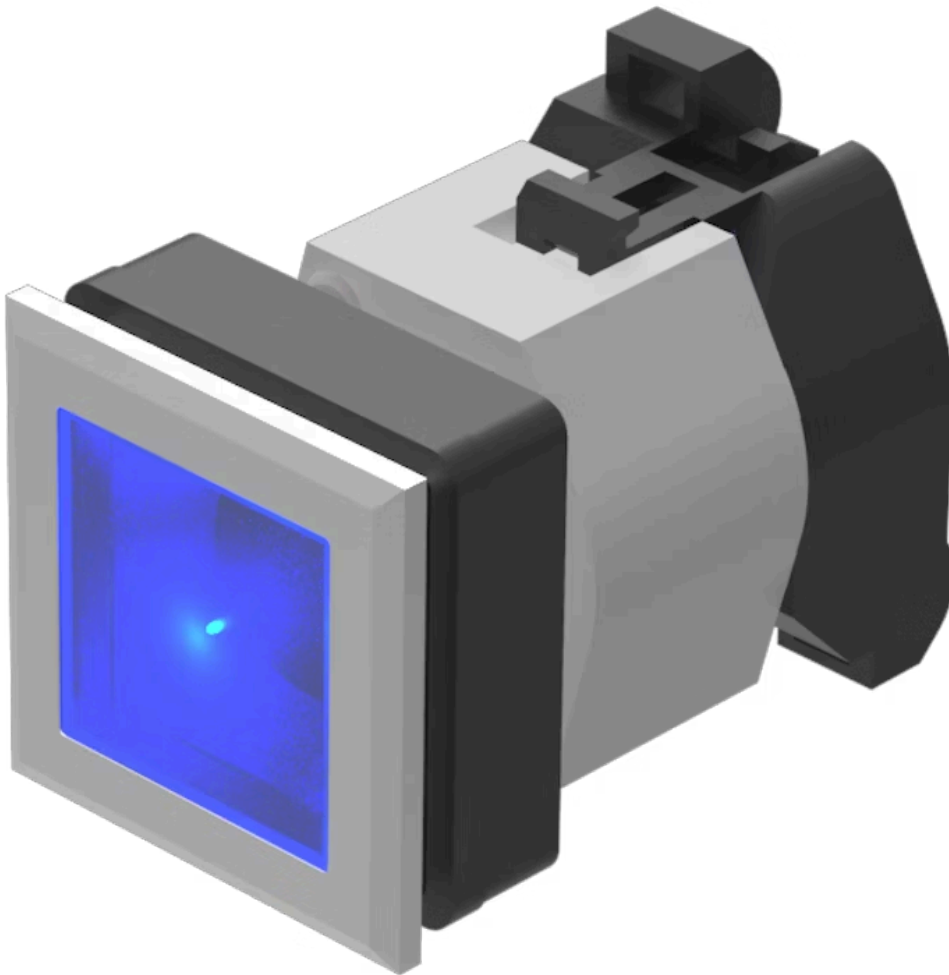


# Actuator

704.230.608

Distribution by  
DigiKey

**DigiKey**



<https://digikey.eao.com/p/704.230.608>

Your product:

---



## 704.230.608 Actuator

### FRONT

Front bezel colour:	Silver
Front dimension:	35 mm x 35 mm
Front form:	square
Front bezel material:	Plastic

### MOUNTING

Design:	flush
Mounting cut-out:	30 mm x 30 mm

### OPERATING-/INDICATION PART

Lens colour:	Blue
Lens optics:	transparent
Lens illumination:	illuminative
Lens material:	Plastic
Lens shape:	flush

### ELECTRICAL CHARACTERISTICS

Standards:	The switches comply with the "Standards for low-voltage switching devices" DIN EN 60947-1
------------	---

### MECHANICAL CHARACTERISTIC

Operating force:	6.2 N
Terminal:	Screw terminal

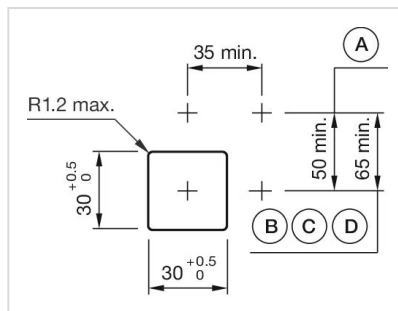
<b>Switching action:</b>	Momentary
<b>Mechanical lifetime:</b>	≤3 Mio. cycles of operation
<b>Operating Travel:</b>	ca. 5.8 mm ± 0.2 mm
<b>Weight:</b>	0.051 kg

## AMBIENT CONDITION

<b>IP Protection:</b>	IP65 front side
<b>Operating temperature:</b>	– 40 °C ... + 55 °C
<b>Storage temperature:</b>	– 40 °C ... + 85 °C

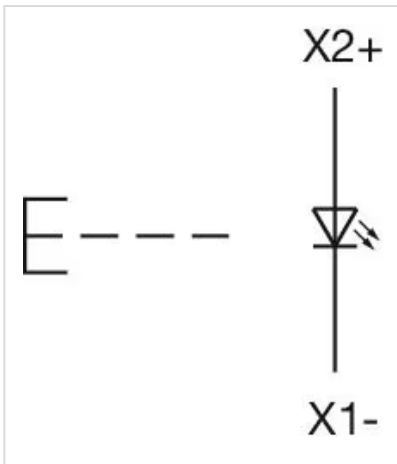
## OTHER

<b>max. number of switching elements:</b>	3
<b>Housing colour:</b>	Black
<b>Hints:</b>	Max. 3 switching elements can be clipped on, The lamp block will be delivered with screw terminal
<b>Short Description:</b>	Actuator, 30 mm x 30 mm, 35 mm x 35 mm, flush, illuminative, Blue, Plastic, transparent, square, Silver, Plastic, Momentary, Screw terminal
<b>Housing material:</b>	Plastic
<b>Mounting cut-outs:</b>	

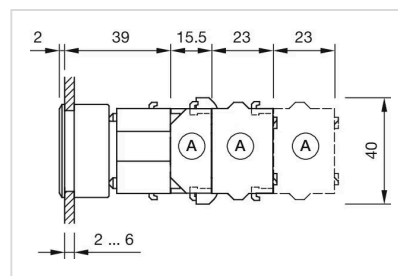


A = Screw terminal  
 B = Push-in terminal (PIT)  
 C = Plug-in terminal 6.3 mm x 0.8 mm  
 D = Double plug-in terminal 6.3 mm x 0.8 mm

## Wiring diagrams:



**Dimension drawings:**



A = Screw terminal