

# Actuator

704.099.010

Distribution by  
DigiKey**DigiKey**<https://digikey.eao.com/p/704.099.010>

Your product:

---



## 704.099.010 Actuator

### FRONT

Front dimension:	Ø 35 mm
Front bezel colour:	Black
Front bezel material:	Aluminium

### MOUNTING

Mounting cut-out:	Ø 30.5 mm
Design:	flush

### OPERATING-/INDICATION PART

Lever colour:	Black
Lever shape:	long
Lever material:	plastic

### ELECTRICAL CHARACTERISTICS

Standards:	The switches comply with the "Standards for low-voltage switching devices" DIN EN 60947-1
------------	---

### MECHANICAL CHARACTERISTIC

<b>Switching positions:</b>	3 positions
<b>Switching angle:</b>	42° left / 42° right
<b>Weight:</b>	0.056 kg
<b>Switching action:</b>	Momentary - Rest - Maintained
<b>Mechanical lifetime:</b>	≤2.5 Mio. cycles of operation

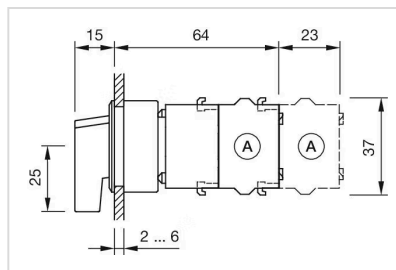
## AMBIENT CONDITION

<b>IP Protection:</b>	IP65 front side
<b>Storage temperature:</b>	– 40 °C ... + 85 °C
<b>Operating temperature:</b>	– 40 °C ... + 55 °C

## OTHER

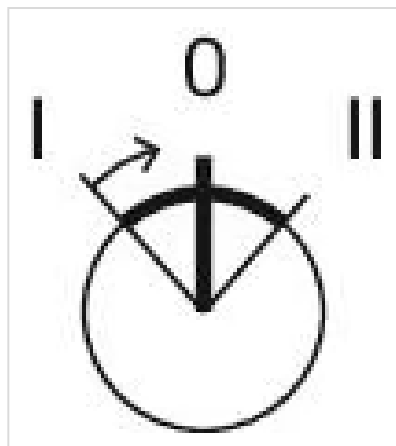
<b>max. number of switching elements:</b>	3
<b>Short Description:</b>	Actuator, Ø 30.5 mm, Ø 35 mm, non illuminative, Black, long, Black, Aluminium, anodised, Momentary - Rest - Maintained
<b>Hints:</b>	Max. 3 switching elements can be clipped on

## Dimension drawings:



A = Screw terminal

## Switching positions:



## Mounting cut-outs:



A = Screw terminal  
 B = Push-in terminal (PIT)  
 C = Plug-in terminal 6.3 mm x 0.8 mm  
 D = Double plug-in terminal 6.3 mm x 0.8 mm

**Wiring diagrams:**

