

F

E

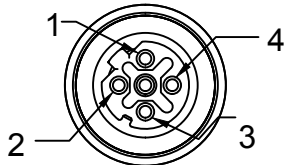
D

C

B

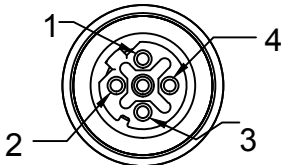
A

FRONT VIEW - MALE M12

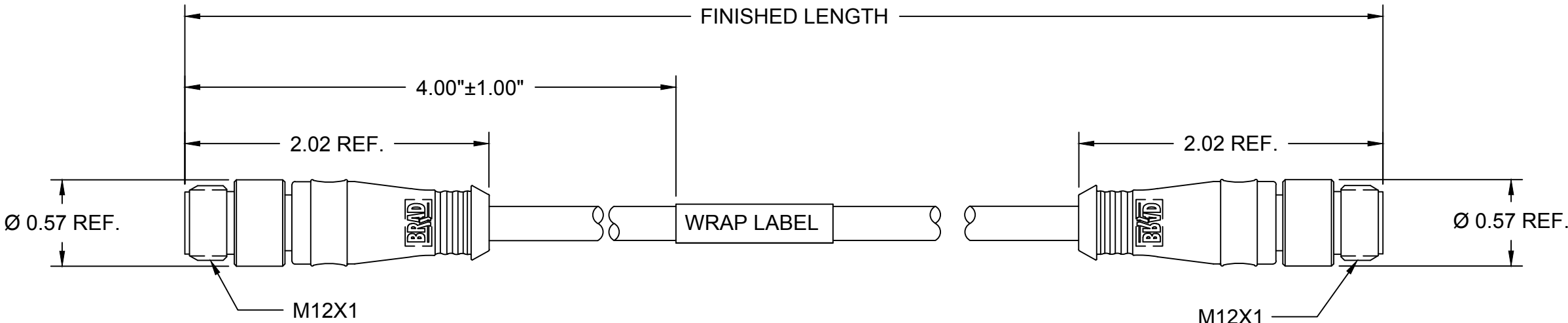


1-WHITE/ORANGE
2-WHITE/GREEN
3-ORANGE
4-GREEN

FRONT VIEW - MALE M12



1-WHITE/ORANGE
2-WHITE/GREEN
3-ORANGE
4-GREEN



NOTES:

MECHANICAL

M12 CONNECTOR

INSERT: BLACK PUR
CONTACT: GOLD/NICKEL OVER COPPER ALLOY
COUPLING NUT: NICKEL PLATED BRASS
MOLDED BODY: BLACK PUR

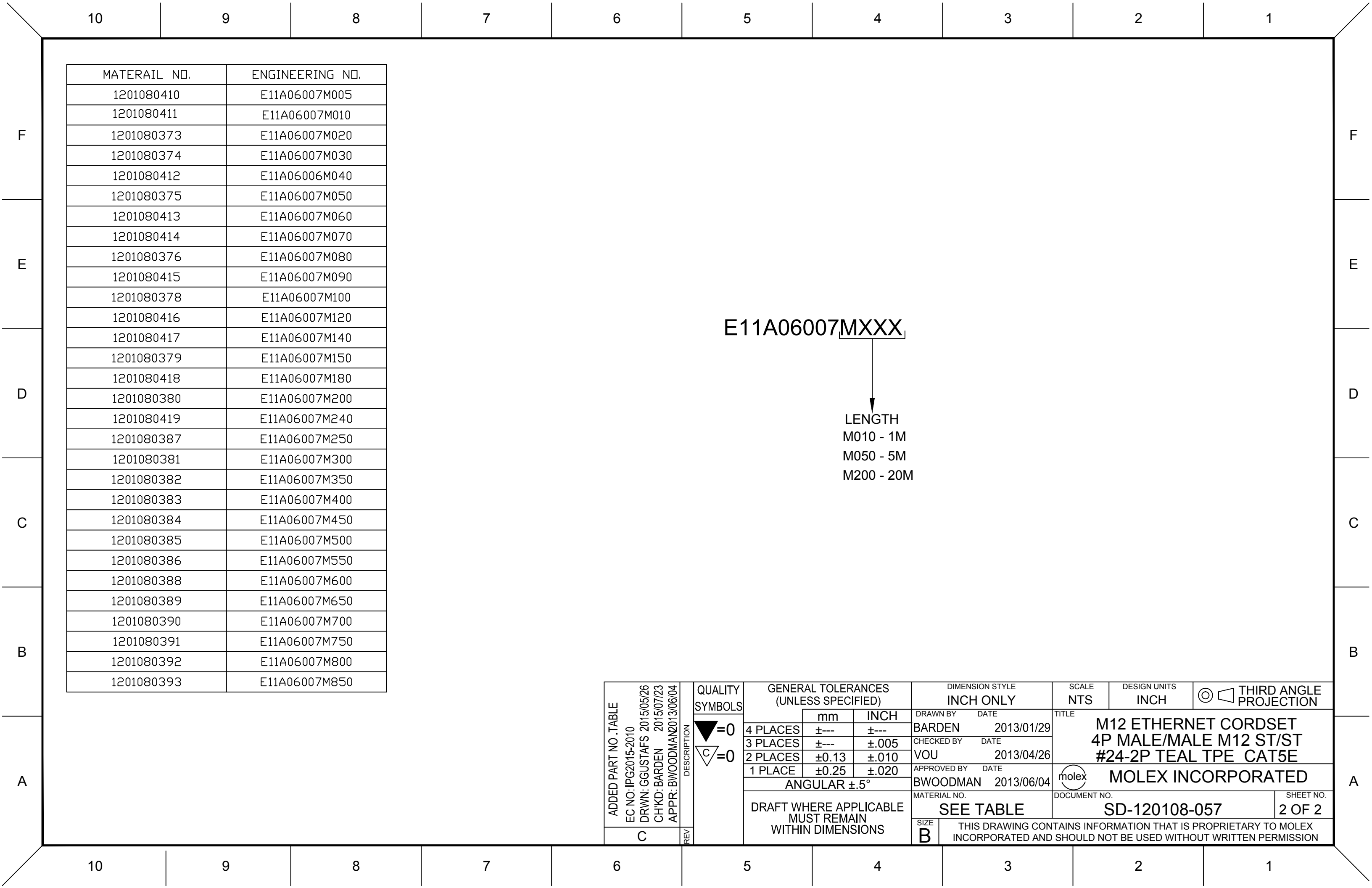
CABLE: 24 AWG 2 PAIR CONDUCTORS TEAL TPE JACKET
UL LISTED: CMR
CSA LISTED: CMG

WRAP LABEL: MARKED WITH P/N, DATE CODE, VOLTAGE & AMPERAGE

ELECTRICAL

ACCORDING TO CAT5e
VOLTAGE RATING: 30V AC/DC
AMPERAGE: 1.5A

ADDED PART NO. TABLE EC NO: IPG2015-2010 DRWN: GGUSTAFS 2015/05/26 CHKD: BARDEN 2015/07/23 APPR: BWOODMAN2013/06/04	DESCRIPTION REV	QUALITY SYMBOLS <div>▽=0</div> <div>▽C=0</div>	GENERAL TOLERANCES (UNLESS SPECIFIED)			DIMENSION STYLE INCH ONLY		SCALE NTS	DESIGN UNITS INCH	THIRD ANGLE PROJECTION <div>⊙</div>			
				mm	INCH	DRAWN BY BARDEN	DATE 2013/01/29	TITLE M12 ETHERNET CORDSET 4P MALE/MALE M12 ST/ST #24-2P TEAL TPE CAT5E					
			4 PLACES	±---	±---	CHECKED BY VOU	DATE 2013/04/26						
			3 PLACES	±---	±.005	APPROVED BY BWOODMAN		<div>molex</div>	MOLEX INCORPORATED				
			2 PLACES	±0.13	±.010								
			1 PLACE	±0.25	±.020	MATERIAL NO. SEE TABLE			DOCUMENT NO. SD-120108-057			SHEET NO. 1 OF 2	
			ANGULAR ±.5°										
DRAFT WHERE APPLICABLE MUST REMAIN WITHIN DIMENSIONS			SIZE B	THIS DRAWING CONTAINS INFORMATION THAT IS PROPRIETARY TO MOLEX INCORPORATED AND SHOULD NOT BE USED WITHOUT WRITTEN PERMISSION									
C													



Mouser Electronics

Authorized Distributor

Click to View Pricing, Inventory, Delivery & Lifecycle Information:

Molex:

<u>1201080373</u>	<u>1201080374</u>	<u>1201080375</u>	<u>1201080376</u>	<u>1201080391</u>	<u>1201080392</u>	<u>1201080393</u>	<u>1201080384</u>
<u>1201080385</u>	<u>1201080386</u>	<u>1201080388</u>	<u>1201080389</u>	<u>1201080390</u>	<u>1201080378</u>	<u>1201080379</u>	<u>1201080380</u>
<u>1201080381</u>	<u>1201080382</u>	<u>1201080383</u>					