

# Product data sheet

## Miniature connectors

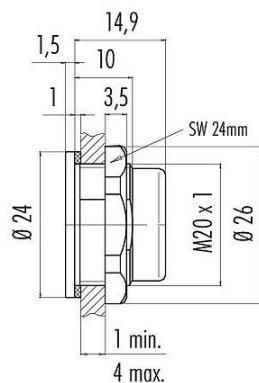


Product description	Snap-In Adapter, unshielded, VDE
Area	series 720
Part no.	08 2433 000 001

### Illustration



### Scale drawing



You can find the component part drawing and assembly instructions on the next page.

### Technical data

#### General features

Part no.	08 2433 000 001
Connector design	Adapter
Version	Adapter
Temperature range from/to	-25 °C / 85 °C
Weight (g)	7.48
Customs tariff number	85366990
Country of Origin	DE

#### Electrical parameters

Pollution degree	2
EMC compliance	unshielded

#### Material

Housing material	PA
REACH SVHC	CAS 7439-92-1 (Lead)
SCIP number	c0779a34-0b87-4637-ab95-fb90953dd199

#### Authorization/approvals

Approvals	VDE
-----------	-----

# Product data sheet

## Miniature connectors

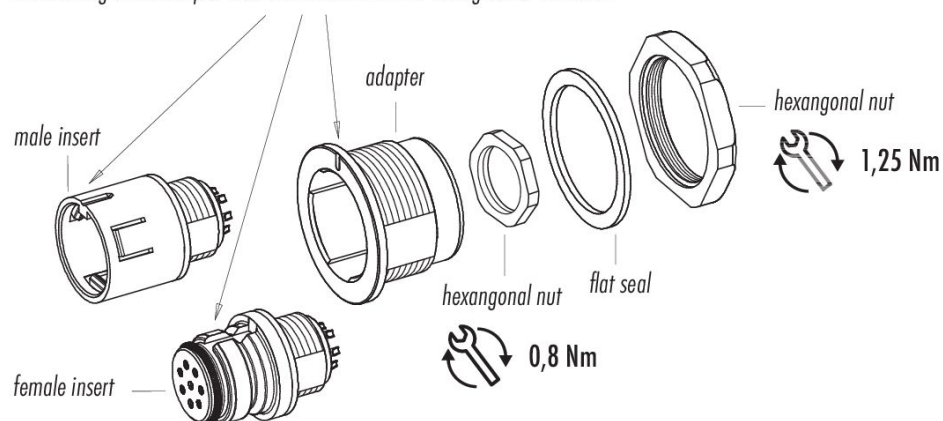
Product description	<b>Snap-In Adapter, unshielded, VDE</b>
Area	<b>series 720</b>
Part no.	<b>08 2433 000 001</b>

### Classifications

eCl@ss 11.1	27-44-02-08
ETIM 9.0	EC002638

### Assembly instructions

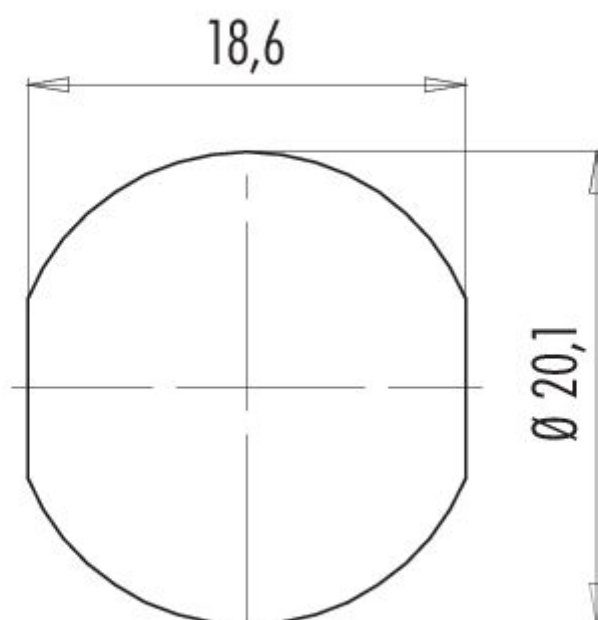
*The marking of the adapter must be conform with the coding nut of the insert*



*Inserts have to be ordered separately*

Product description	Snap-In Adapter, unshielded, VDE
Area	series 720
Part no.	08 2433 000 001

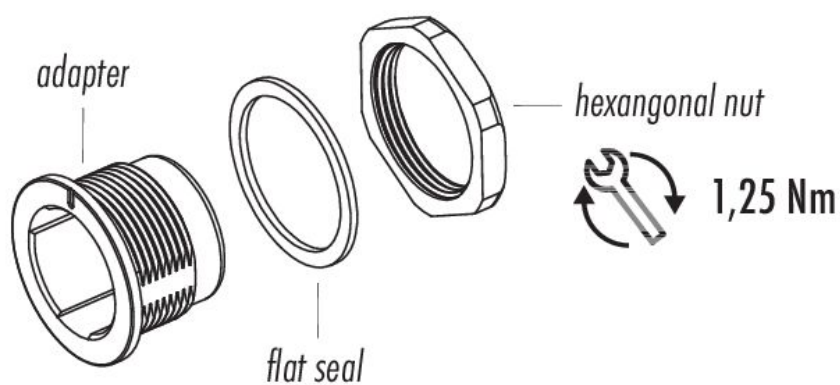
## Assembly instructions / Panel cut-out



**Product data sheet**  
**Miniature connectors**

Product description	<b>Snap-In Adapter, unshielded, VDE</b>
Area	<b>series 720</b>
Part no.	<b>08 2433 000 001</b>

**Component part drawing**



Product description	<b>Snap-In Adapter, unshielded, VDE</b>
Area	<b>series 720</b>
Part no.	<b>08 2433 000 001</b>

## Security notices

The connector must not be plugged or unplugged under load. Non-observance and improper use can result in personal injury.

The connectors have been developed for applications in plant engineering, control and electrical equipment construction. The user is responsible for checking whether the connectors can also be used in other areas of application.

Connectors which are used in circuits with voltages dangerous to the touch may only be installed and used by, or under the supervision of, persons with electrical engineering training, taking into account the applicable regulations and standards.

The user must take suitable safety precautions to ensure that the connector cannot be accidentally disconnected.

Plug connectors with enclosure protection IP67 and IP68 are not suitable for use under water. When used outdoors, the plug connectors must be protected separately against corrosion. For further information on the IP protection classes, please refer to the "Technical Information" download centre.

The plug connector is not suitable for mains voltages Please observe the pollution degree and the overvoltage category. For further information, please refer to the download center "Technical Information".