

76450-**-0*

MODULE TYPE

3 = LEFT GUIDED LEAD-FREE
7 = LEFT GUIDED LEAD-FREE W/ ENDWALL

PIN LENGTH (P)

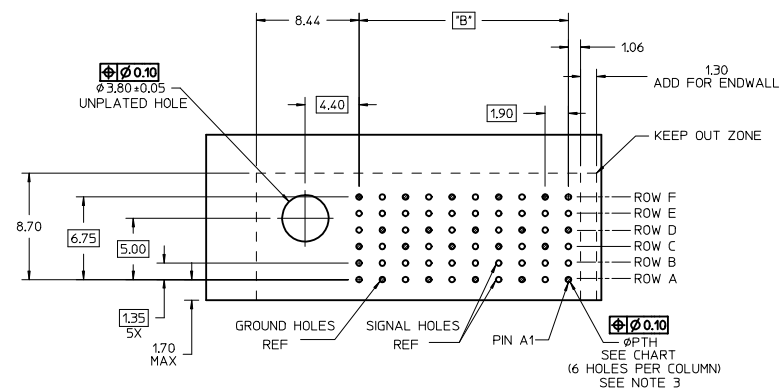
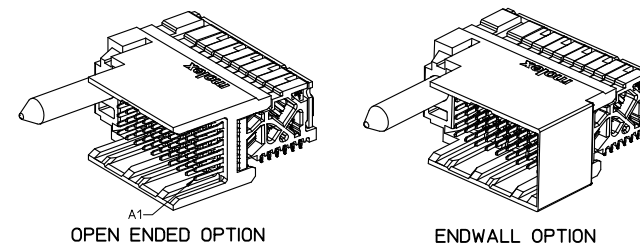
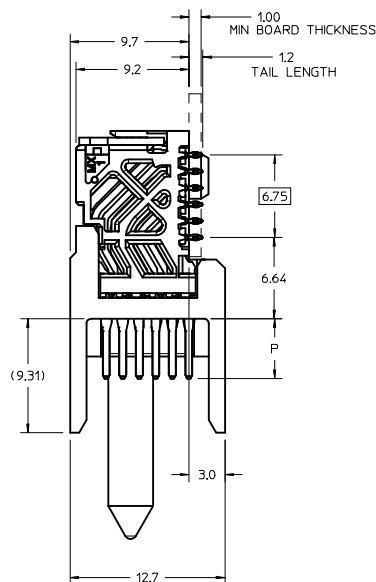
4 = 4.90 (0.46 PTH)
5 = 5.50 (0.46 PTH)
7 = 4.90 (0.39 PTH)
8 = 5.50 (0.39 PTH)

OF COLUMNS

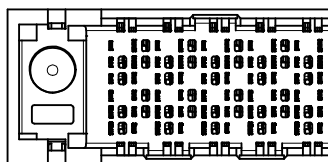
1 = 10 COL
6 = 16 COL

NOTES:

1. MATERIALS: HOUSING - LIQUID CRYSTAL POLYMER (LCP), GLASS-FILLED, UL94V-0
TERMINALS - HIGH PERFORMANCE COPPER ALLOY
2. FINISH 304µ SELECTIVE GOLD IN CONTACT AREA, SELECTIVE TIN
ON PCB TAILS, NICKEL, OVERALL.
3. FOR FURTHER INFORMATION SEE PRODUCT SPECIFICATION PS-76660-999.
4. EACH SIGNAL WAFER CONTAINS 2 COLUMNS OF TERMINALS.
5. PRODUCT IS TO BE PACKAGED PER PACKAGING SPECIFICATION PK-70873-077.
6. THIS PART CONFORMS TO CLASS B REQUIREMENTS OF COSMETIC SPEC PS-45499-002.
7. REFER TO NEXLEX SALES DRAWING 50-7664-004 FOR MATING DAUGHTER CARDS.
8. REF. TO NEXLEX ROUTING GUIDE AS 76660-999 FOR ANTI PAD AND ROUTING
RECOMMENDATIONS.
9. WHEN USING MODEL SUPPLIED #2-32 SCREW 373726-0005 (7/162 +0.38/-0.76 mm
THREADABLE SCREW LENGTH, THE BOARD THICKNESS RANGE IS 160 TO 385 mm.
10. MARKING LOCATED APPROXIMATELY AS SHOWN, PART NUMBER AND DATE CODE.

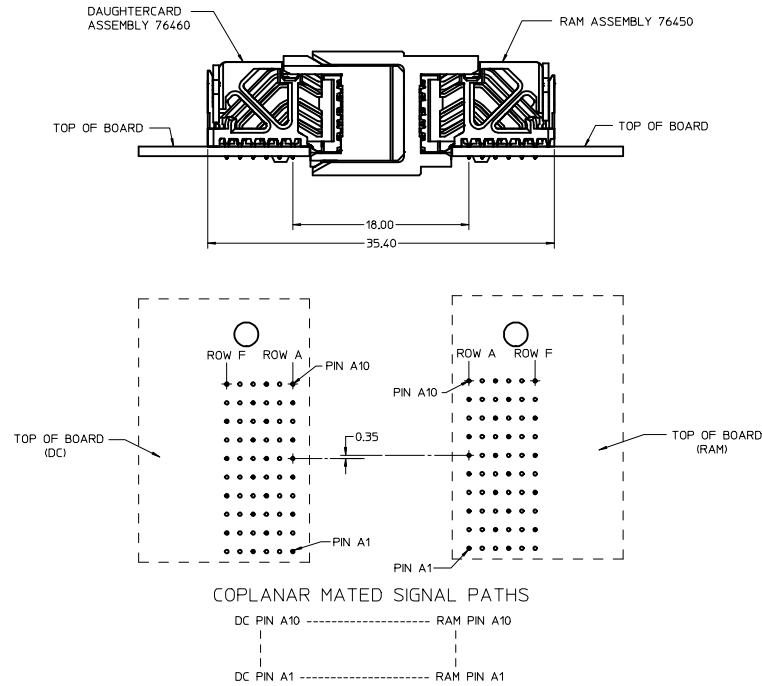


RAM HOLE PATTERN
(CONNECTOR SIDE)



ADD LASER MARK INFO EC NO.: JCP2016-3973 DRAWN BY: MARIARA CHECKED BY: LOLO DATE: 2016/02/12 DATE: 2016/04/10 APPR. RELD	QUALITY SYMBOLS ▽=0 ▽=0 ▽=0	GENERAL TOLERANCES (UNLESS SPECIFIED)		DIMENSION STYLE MM ONLY		SCALE 1:1	DESIGN UNITS METRIC	THIRD ANGLE PROJECTION	
		mm	INCH	DRAWN BY J JONIAK	DATE 2009/07/06	IMPACT 100 OHM 2 PAIR RAM LEFT GUIDED SALES DRAWING molex SD-76450-002			
		4 PLACES ±.01 ±.01	±.01 ±.01	CHECKED BY J LLAURX	DATE 2009/07/06				
		3 PLACES ±.01 ±.01	±.01 ±.01	APPROVED BY J LLAURX	DATE 2010/02/09				
		2 PLACES ±.013 ±.013	±.013 ±.013	MATERIAL NO.		DOCUMENT NO.	SHEET NO.		
1 PLACE ±.025 ±.025	±.025 ±.025	SEE TABLE		SD-76450-002		1 OF 2			
0 PLACE ±.01 ±.01	±.01 ±.01	DRAFT WHERE APPLICABLE MUST REMAIN WITHIN DIMENSIONS		SIZE	THIS DRAWING CONTAINS INFORMATION THAT IS PROPRIETARY TO MOLEX INCORPORATED AND SHOULD NOT BE USED WITHOUT WRITTEN PERMISSION				

COPLANAR APPLICATION



SEE SHEET 1 REV B6	DESCRIPTION EC NO.: UCP2046-3973 DRAWING NO.: 2016/07/29 CHK: TELLO APPROV: TELLO 2016/04/20	QUALITY SYMBOLS ▽=0 ▽=0 ▽=0	GENERAL TOLERANCES (UNLESS SPECIFIED)		DIMENSION STYLE MM ONLY		SCALE 5:1	DESIGN UNITS METRIC	THIRD ANGLE PROJECTION	
				mm	INCH	DRAWN BY JJONIAK	DATE 2009/07/06	TITLE IMPACT 100 OHM 2 PAIR RAM LEFT GUIDED SALES DRAWING		
			4 PLACES	±---	±---	CHECKED BY JLAURX	DATE 2009/07/06	molex		
			3 PLACES	±---	±---					
			2 PLACES	±0.13	±---	APPROVED BY JLAURX	DATE 2010/02/09			
			1 PLACE	±0.25	±---					
			0 PLACE	±---	±---	MATERIAL NO.		DOCUMENT NO.		SHEET NO. 2 OF 2
			ANGULAR ±1/2°		SEE TABLE		SD-76450-002			
			DRAFT WHERE APPLICABLE MUST REMAIN WITHIN DIMENSIONS		THIS DRAWING CONTAINS INFORMATION THAT IS PROPRIETARY TO MOLEX INCORPORATED AND SHOULD NOT BE USED WITHOUT WRITTEN PERMISSION					

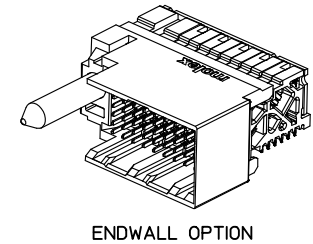
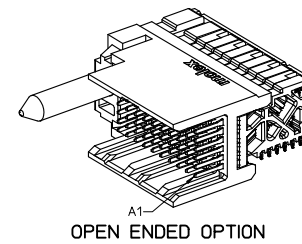
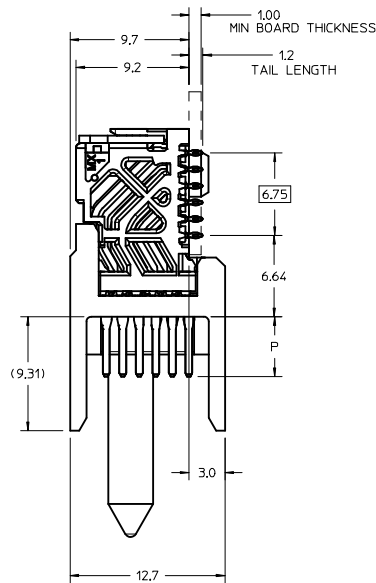
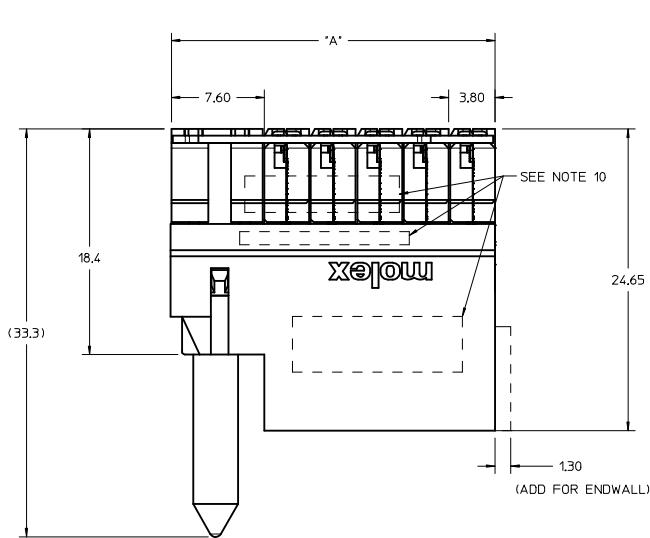
MATERIAL NUMBER	# OF COLUMNS	# OF DIFF PAIR	DIM "A" MAX	DIM "B"
76450-*10*	10	20	26.60	17.10
76450-*60*	16	32	38.00	28.50

76450-*0*

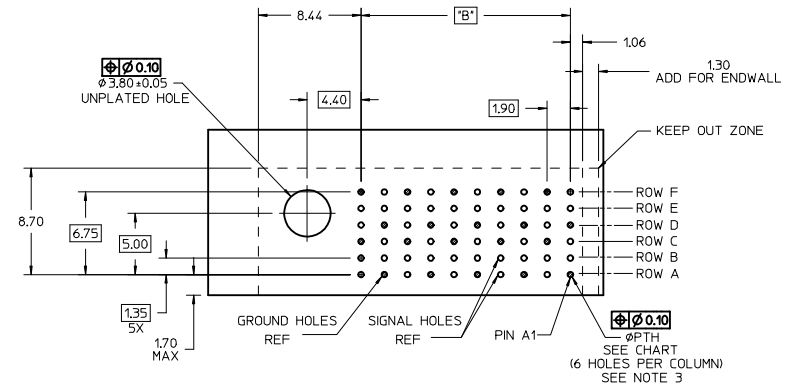
MODULE TYPE
3 = LEFT GUIDED LEAD-FREE
7 = LEFT GUIDED LEAD-FREE W/ ENDWALL

PIN LENGTH (P)
4 = 4.90 (0.46 PTH)
5 = 5.50 (0.46 PTH)
7 = 4.90 (0.39 PTH)
8 = 5.50 (0.39 PTH)

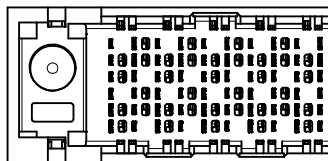
OF COLUMNS
1 = 10 COL
6 = 16 COL



- NOTES:
1. MATERIALS: HOUSING - LIQUID CRYSTAL POLYMER (LCP), GLASS-FILLED, UL94V-0 TERMINALS - HIGH PERFORMANCE COPPER ALLOY
 2. FINISH: 304n SELECTIVE GOLD IN CONTACT AREA, SELECTIVE TIN ON PCB TAILS, NICKEL OVERALL.
 3. FOR FURTHER INFORMATION SEE PRODUCT SPECIFICATION PS-76060-999.
 4. EACH SIGNAL WAFER CONTAINS 2 COLUMNS OF TERMINALS.
 5. PRODUCT TO BE PACKAGED PER PACKAGING SPECIFICATION PK-70873-077.
 6. THIS PART CONFORMS TO CLASS B REQUIREMENTS OF COSMETIC SPEC PS-45499-002.
 7. REFER TO MOLEX SALES DRAWING SD-76460-004 FOR MATING DAUGHTERCARDS.
 8. REFER TO MOLEX PCB ROUTING GUIDE AS-76060-990 FOR ANTIPAD AND ROUTING RECOMMENDATIONS.
 9. WHEN USING MOLEX SUPPLIED #2-32 SCREW 73726-0005 (7.62 +0.38/-0.76 mm THREADABLE SCREW LENGTH), THE BOARD THICKNESS RANGE IS 1.60 TO 3.85 mm.
 10. MARKING: LOCATED APPROXIMATELY AS SHOWN. PART NUMBER AND DATE CODE.

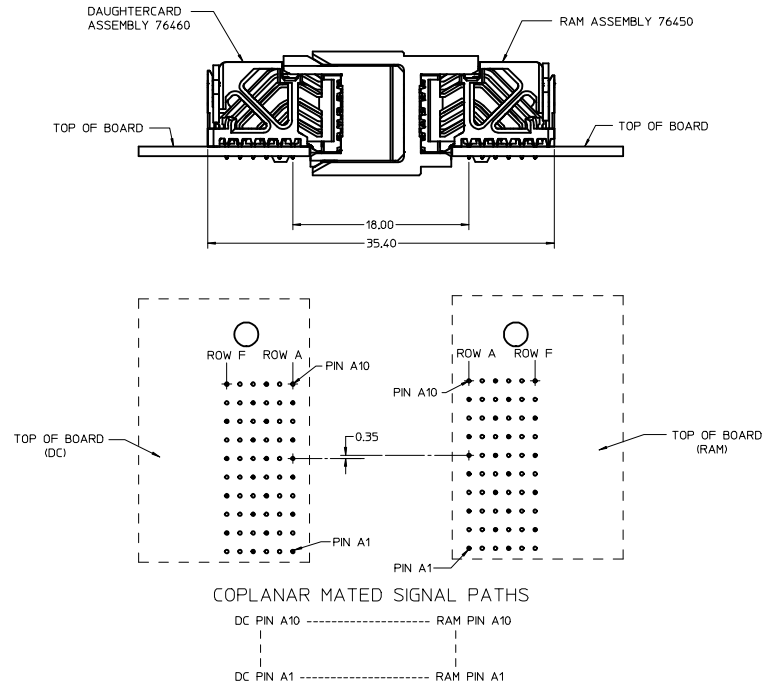


RAM HOLE PATTERN
(CONNECTOR SIDE)



ADD LASER MARK INFO EC NO: UCP2016-3973 DRAWN BY: DRWNGVAVARA CHECKED BY: CHKO:TELO APPR: TELU 2016/07/29 2016/07/29 2016/07/22 2016/04/20	QUALITY SYMBOLS ▽=0 ▽=0 ▽=0	DESCRIPTION	GENERAL TOLERANCES (UNLESS SPECIFIED)		DIMENSION STYLE MM ONLY		SCALE 5:1	DESIGN UNITS METRIC	THIRD ANGLE PROJECTION			
					DRAWN BY J JONIAK		DATE 2009/07/06	TITLE IMPACT 100 OHM 2 PAIR RAM LEFT GUIDED SALES DRAWING				
					CHECKED BY JL AURX		DATE 2009/07/06	molex				
					APPROVED BY JL AURX		DATE 2010/02/09					
B6	REV	DRAFT WHERE APPLICABLE MUST REMAIN WITHIN DIMENSIONS	ANGULAR ±1/2°		MATERIAL NO.		DOCUMENT NO.		SHEET NO.			
					SEE TABLE		SD-76450-002		1 OF 2			
					SIZE D		THIS DRAWING CONTAINS INFORMATION THAT IS PROPRIETARY TO MOLEX INCORPORATED AND SHOULD NOT BE USED WITHOUT WRITTEN PERMISSION					

COPLANAR APPLICATION



SEE SHEET 1 REV B6	DESCRIPTION EC NO.: UCP2046-3973 DRAWING NO.: 2015/07/29 CHKD BY: 2016/02/22 CETOLO 2016/04/20 APPROV: 2016/04/20	QUALITY SYMBOLS ▽=0 ▽=0 ▽=0	GENERAL TOLERANCES (UNLESS SPECIFIED)		DIMENSION STYLE MM ONLY		SCALE 5:1	DESIGN UNITS METRIC	THIRD ANGLE PROJECTION			
				mm	INCH	DRAWN BY JJONIAK	DATE 2009/07/06	TITLE IMPACT 100 OHM 2 PAIR RAM LEFT GUIDED SALES DRAWING				
			4 PLACES	±---	±---	CHECKED BY JLAURX	DATE 2009/07/06	molex				
			3 PLACES	±---	±---							
			2 PLACES	±0.13	±---	APPROVED BY JLAURX	DATE 2010/02/09	SD-76450-002				
			1 PLACE	±0.25	±---							
			0 PLACE	±---	±---	MATERIAL NO.		DOCUMENT NO.		SHEET NO. 2 OF 2		
			ANGULAR ±1/2°		SEE TABLE							
			DRAFT WHERE APPLICABLE MUST REMAIN WITHIN DIMENSIONS		THIS DRAWING CONTAINS INFORMATION THAT IS PROPRIETARY TO MOLEX INCORPORATED AND SHOULD NOT BE USED WITHOUT WRITTEN PERMISSION							