

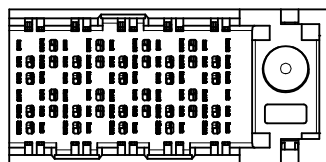
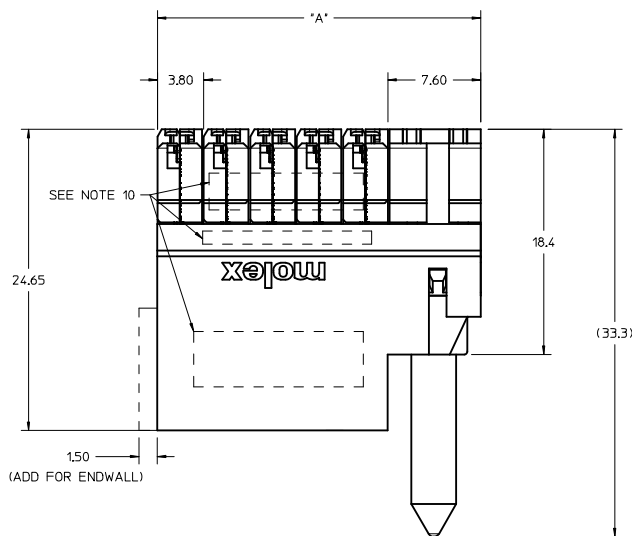
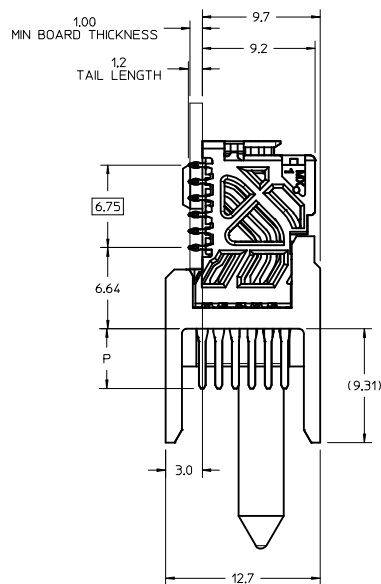
MATERIAL NUMBER	# OF COLUMNS	# OF DIFF PAIR	DIM "A" MAX	DIM "B"
76450-10*	10	20	26.60	17.10
76450-60*	16	32	38.00	28.50

**76450-\*\*0\***

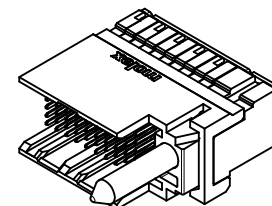
MODULE & TAIL PLATING TYPE  
 5 = RIGHT GUIDED LEAD-FREE  
 9 = RIGHT GUIDED LEAD-FREE W/ ENDWALL

PIN LENGTH (P)  
 4 = 4.90 (0.46 PTH)  
 5 = 5.50 (0.46 PTH)  
 7 = 4.90 (0.39 PTH)  
 8 = 5.50 (0.39 PTH)

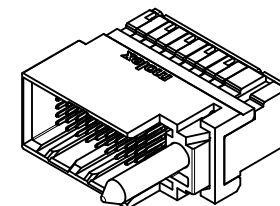
# OF COLUMNS  
 1 = 10 COL  
 6 = 16 COL



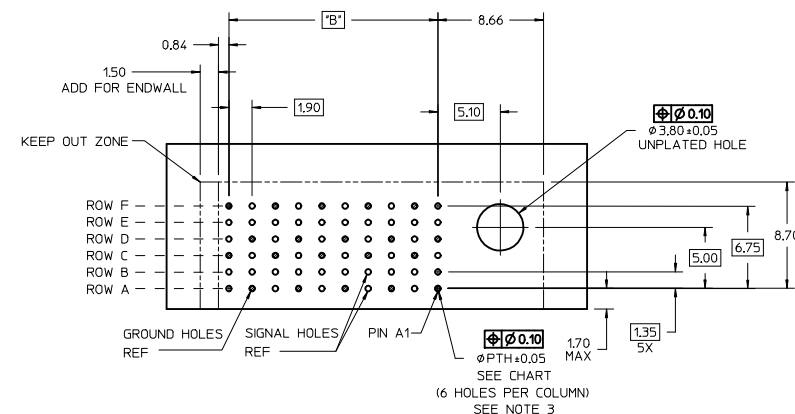
- NOTES:
1. MATERIALS: HOUSING - LIQUID CRYSTAL POLYMER (LCP), GLASS-FILLED, UL94V-0
  2. TERMINALS - HIGH PERFORMANCE COPPER ALLOY
  3. FINISH: 304h SELECTIVE GOLD IN CONTACT AREA, SELECTIVE TIN ON PCB TAILS, NICKEL OVERALL.
  4. FOR FURTHER INFORMATION SEE PRODUCT SPECIFICATION PS-76060-999.
  5. EACH SIGNAL WAFER CONTAINS 2 COLUMNS OF TERMINALS.
  6. PRODUCT TO BE PACKAGED PER PACKAGING SPECIFICATION PK-70873-077.
  7. THIS PART CONFORMS TO CLASS B REQUIREMENTS OF COSMETIC SPEC PS-15499-002.
  8. REFER TO MOLEX SALES DRAWING SD-76460-002 FOR MATING DAUGHTERCARDS.
  9. REFER TO MOLEX PCB ROUTING GUIDE AS-76060-990 FOR ANTI PAD AND ROUTING RECOMMENDATIONS.
  10. WHEN USING MOLEX SUPPLIED #2-32 SCREW 73726-0005 (7.62 +0.38/-0.76 mm THREADABLE SCREW LENGTH, THE BOARD THICKNESS RANGE IS 1.60 TO 3.85 mm).
  11. MARKING: LOCATED APPROXIMATELY AS SHOWN, PART NUMBER AND DATE CODE.



OPEN ENDED OPTION



ENDWALL OPTION



RAM HOLE PATTERN  
(CONNECTOR SIDE)

ADD LASER MARK INFO EC NO: UCP2016-3973 DRAWN BY: JONIAK CHECKED BY: JLAURX APPROVED BY: JLAURX DATE: 2015/07/29 DATE: 2009/07/06 DATE: 2010/02/09	QUALITY SYMBOLS	GENERAL TOLERANCES (UNLESS SPECIFIED)		DIMENSION STYLE MM ONLY		SCALE 5:1	DESIGN UNITS METRIC	THIRD ANGLE PROJECTION	TITLE		
	▽=0	4 PLACES ±	mm	INCH	DRAWN BY	DATE	IMPACT 100 OHM				
	▽=0	3 PLACES ±	---	---	JONIAK	2009/07/06	2 PAIR RAM RIGHT GUIDED				
	▽=0	2 PLACES ±	0.13	---	CHECKED BY	DATE	SALES DRAWING				
	▽=0	1 PLACE ±	0.25	---	JLAURX	2009/07/06	molex				
	▽=0	0 PLACE ±	---	---	APPROVED BY	DATE					
	ANGULAR ±1/2°				JLAURX	2010/02/09	SD-76450-004				
	DRAFT WHERE APPLICABLE				MATERIAL NO.						DOCUMENT NO.
	MUST REMAIN WITHIN DIMENSIONS				SEE TABLE		SD-76450-004		SHEET NO. 1 OF 2		
	SIZE				THIS DRAWING CONTAINS INFORMATION THAT IS PROPRIETARY TO MOLEX INCORPORATED AND SHOULD NOT BE USED WITHOUT WRITTEN PERMISSION						

20 19 18 17 16 15 14 13 12 11 10 9 8 7 6 5 4 3 2 1

M

L

K

J

I

H

G

F

E

D

C

B

A

M

L

K

J

I

H

G

F

E

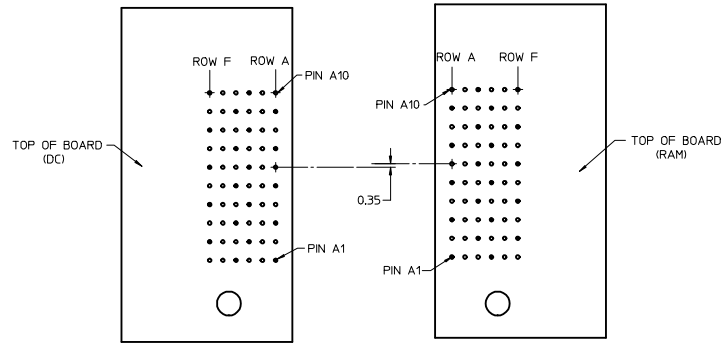
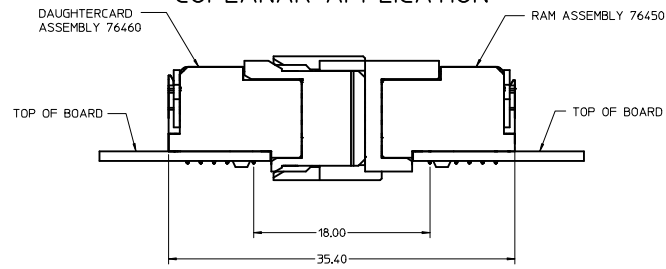
D

C

B

A

## COPLANAR APPLICATION



## COPLANAR MATED SIGNAL PATHS



SEE SHEET 1 EC NO: UCP2016-3973 DRAWN BY: DRWINDAVARA 2015/07/29 CHKD BY: CHKOIELO 2016/02/22 APPR BY: CHPRTELO 2016/04/20	QUALITY SYMBOLS ▽=0 ▽=0 ▽=0	GENERAL TOLERANCES (UNLESS SPECIFIED) mm INCH 4 PLACES ± --- ± --- 3 PLACES ± --- ± --- 2 PLACES ± 0.13 ± --- 1 PLACE ± 0.25 ± --- 0 PLACE ± --- ± --- ANGULAR ± 1/2° DRAFT WHERE APPLICABLE MUST REMAIN WITHIN DIMENSIONS	DIMENSION STYLE MM ONLY	SCALE 5:1	DESIGN UNITS METRIC	THIRD ANGLE PROJECTION	TITLE IMPACT 100 OHM 2 PAIR RAM RIGHT GUIDED SALES DRAWING <b>molex</b>	MATERIAL NO. SD-76450-004	DOCUMENT NO. SD-76450-004	SHEET NO. 2 OF 2

19 18 17 16 15 14 13 12 11 10 9 8 7 6 5 4 3 2 1

MATERIAL NUMBER	# OF COLUMNS	# OF DIFF PAIR	DIM "A" MAX	DIM "B"
76450-10*	10	20	26.60	17.10
76450-16*	16	32	38.00	28.50

76450-10\*

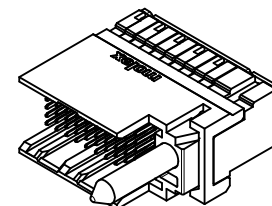
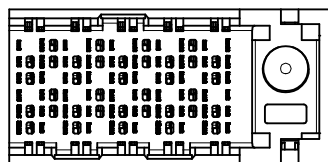
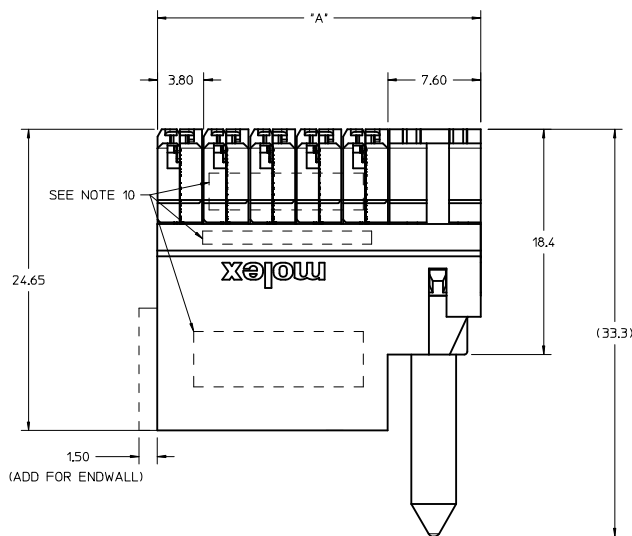
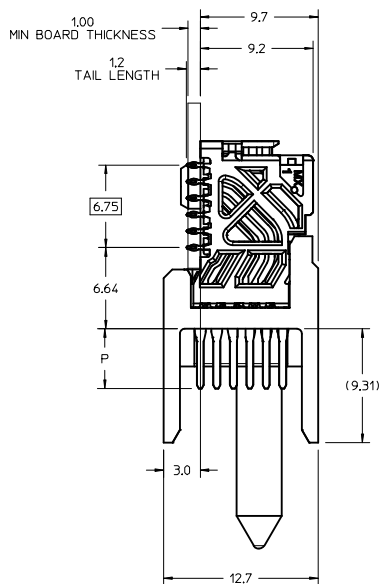
MODULE & TAIL PLATING TYPE  
5 = RIGHT GUIDED LEAD-FREE  
9 = RIGHT GUIDED LEAD-FREE W/ ENDWALL

# OF COLUMNS  
1 = 10 COL  
6 = 16 COL

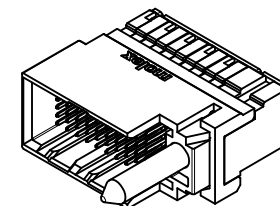
PIN LENGTH (P)  
4 = 4.90 (0.46 PTH)  
5 = 5.50 (0.46 PTH)  
7 = 4.90 (0.39 PTH)  
8 = 5.50 (0.39 PTH)

#### NOTES:

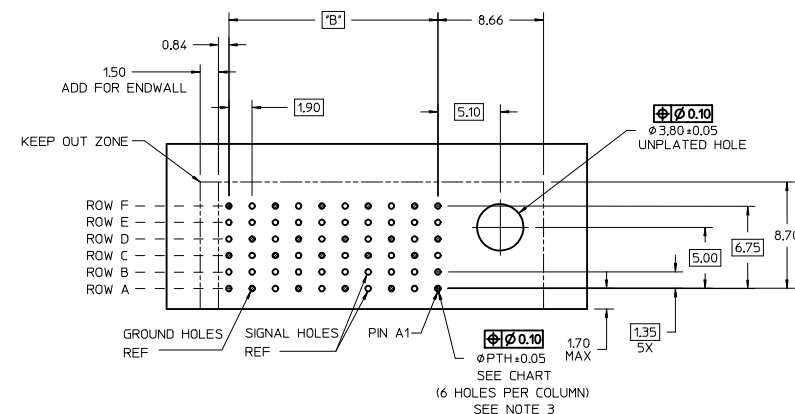
1. MATERIALS: HOUSING - LIQUID CRYSTAL POLYMER (LCP), GLASS-FILLED, UL94V-0
2. TERMINALS - HIGH PERFORMANCE COPPER ALLOY
3. FINISH: 304h SELECTIVE GOLD IN CONTACT AREA, SELECTIVE TIN ON PCB TAILS, NICKEL OVERALL.
4. FOR FURTHER INFORMATION SEE PRODUCT SPECIFICATION PS-76060-999.
5. EACH SIGNAL WAFER CONTAINS 2 COLUMNS OF TERMINALS.
6. PRODUCT TO BE PACKAGED PER PACKAGING SPECIFICATION PK-70873-077.
7. THIS PART CONFORMS TO CLASS B REQUIREMENTS OF COSMETIC SPEC PS-15499-002.
8. REFER TO MOLEX SALES DRAWING SD-76460-002 FOR MATING DAUGHTERCARDS.
9. REFER TO MOLEX PCB ROUTING GUIDE AS-76060-990 FOR ANTI PAD AND ROUTING RECOMMENDATIONS.
10. WHEN USING MOLEX SUPPLIED #2-32 SCREW 73726-0005 (7.62 +0.38/-0.76 mm THREADABLE SCREW LENGTH, THE BOARD THICKNESS RANGE IS 1.60 TO 3.85 mm).
11. MARKING: LOCATED APPROXIMATELY AS SHOWN, PART NUMBER AND DATE CODE.



OPEN ENDED OPTION



ENDWALL OPTION



## RAM HOLE PATTERN (CONNECTOR SIDE)

<div>ADD LASER MARK INFO</div> <div>EC NO: UCP2016-3973</div> <div>DRAWN BY: JONIAK</div> <div>CHECKED BY: JLAURX</div> <div>APPROVED BY: JLAURX</div> <div>DATE: 2015/07/29</div> <div>DATE: 2009/07/06</div> <div>DATE: 2010/02/09</div>	<div>QUALITY SYMBOLS</div> <div>▽=0</div> <div>▽=0</div> <div>▽=0</div>	<div>GENERAL TOLERANCES (UNLESS SPECIFIED)</div> <table><thead><tr><th></th><th>mm</th><th>INCH</th></tr></thead><tbody><tr><td>4 PLACES ±</td><td>---</td><td>---</td></tr><tr><td>3 PLACES ±</td><td>---</td><td>---</td></tr><tr><td>2 PLACES ±</td><td>0.13</td><td>---</td></tr><tr><td>1 PLACE ±</td><td>0.25</td><td>---</td></tr><tr><td>0 PLACE ±</td><td>---</td><td>---</td></tr></tbody></table>		mm	INCH	4 PLACES ±	---	---	3 PLACES ±	---	---	2 PLACES ±	0.13	---	1 PLACE ±	0.25	---	0 PLACE ±	---	---	<div>DIMENSION STYLE</div> <div>MM ONLY</div> <div>DRAWN BY: JONIAK</div> <div>CHECKED BY: JLAURX</div> <div>APPROVED BY: JLAURX</div> <div>DATE: 2009/07/06</div> <div>DATE: 2009/07/06</div> <div>DATE: 2010/02/09</div>	<div>SCALE</div> <div>5:1</div> <div>DESIGN UNITS</div> <div>METRIC</div> <div>THIRD ANGLE PROJECTION</div>	<div>TITLE</div> <div>IMPACT 100 OHM</div> <div>2 PAIR RAM RIGHT GUIDED</div> <div>SALES DRAWING</div> <div>molex</div>	<div>MATERIAL NO.</div> <div>SD-76450-004</div> <div>DOCUMENT NO.</div>	<div>SHEET NO.</div> <div>1 OF 2</div>
		mm	INCH																						
	4 PLACES ±	---	---																						
	3 PLACES ±	---	---																						
	2 PLACES ±	0.13	---																						
1 PLACE ±	0.25	---																							
0 PLACE ±	---	---																							
		<div>DRAFT MUST REMAIN WITHIN DIMENSIONS</div>	<div>SIZE</div> <div>D</div>	<div>THIS DRAWING CONTAINS INFORMATION THAT IS PROPRIETARY TO MOLEX INCORPORATED AND SHOULD NOT BE USED WITHOUT WRITTEN PERMISSION</div>																					

20 19 18 17 16 15 14 13 12 11 10 9 8 7 6 5 4 3 2 1

M

L

K

J

I

H

G

F

E

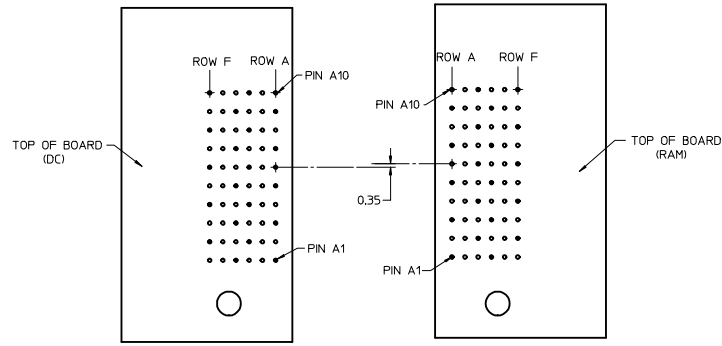
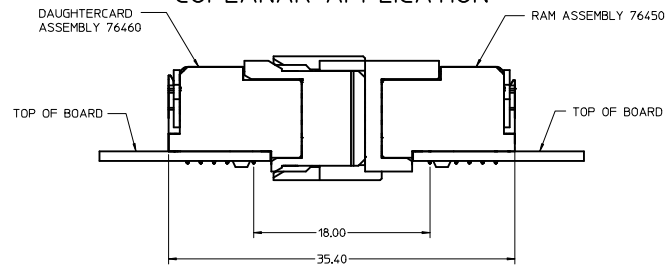
D

C

B

A

## COPLANAR APPLICATION



## COPLANAR MATED SIGNAL PATHS



SEE SHEET 1 EC NO: UCP2016-3973 DRAWN BY: DRWINDAVARA 2015/07/29 CHKD BY: CHKOIELO 2016/02/22 APPR: TELO 2016/04/20 REV	QUALITY SYMBOLS ▽=0 ▽=0 ▽=0	GENERAL TOLERANCES (UNLESS SPECIFIED)  mm INCH 4 PLACES ± --- ± --- 3 PLACES ± --- ± --- 2 PLACES ± 0.13 ± --- 1 PLACE ± 0.25 ± --- 0 PLACE ± --- ± ---  ANGULAR ±1/2° DRAFT WHERE APPLICABLE MUST REMAIN WITHIN DIMENSIONS	DIMENSION STYLE MM ONLY		SCALE 5:1	DESIGN UNITS METRIC	THIRD ANGLE PROJECTION	IMPACT 100 OHM 2 PAIR RAM RIGHT GUIDED SALES DRAWING <b>molex</b>  SD-76450-004	SHEET NO. 2 OF 2	
			DRAWN BY JJONIAK		DATE 2009/07/06	TITLE				
			CHECKED BY JLAURX		DATE 2009/07/06					
			APPROVED BY JLAURX		DATE 2010/02/09					
			MATERIAL NO.							
			SEE TABLE							
			SIZE D	THIS DRAWING CONTAINS INFORMATION THAT IS PROPRIETARY TO MOLEX INCORPORATED AND SHOULD NOT BE USED WITHOUT WRITTEN PERMISSION						

19 18 17 16 15 14 13 12 11 10 9 8 7 6 5 4 3 2 1