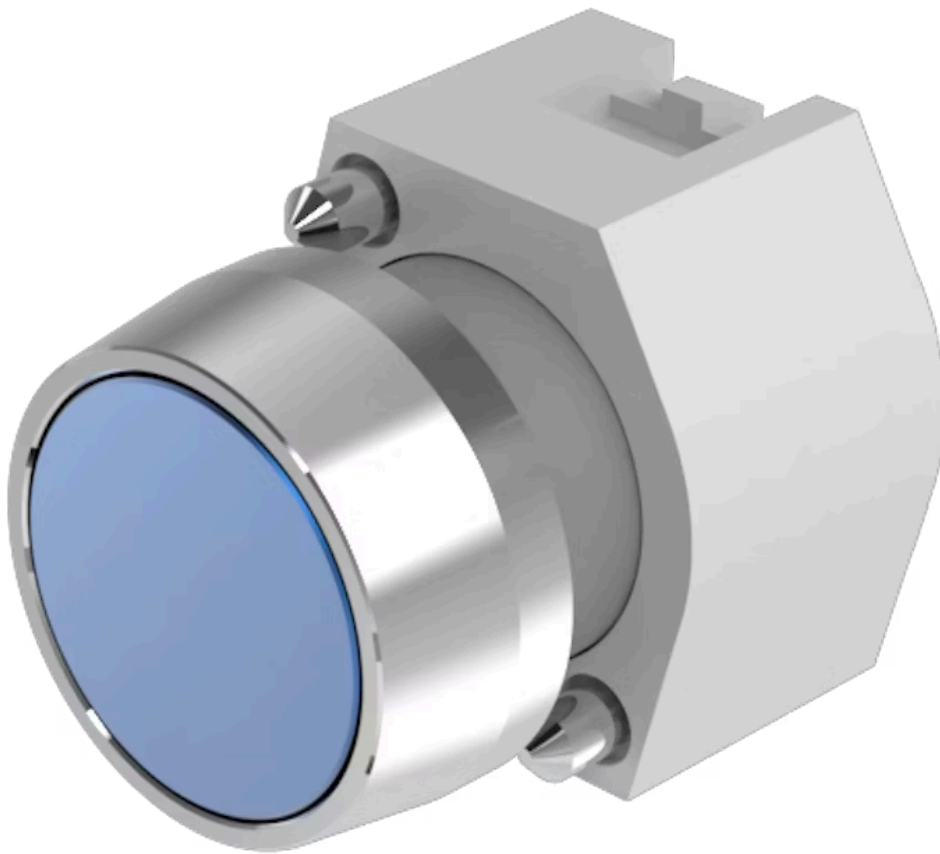


Actuator

704.011.6

Distribution by
DigiKey

DigiKey



<https://digikey.eao.com/p/704.011.6>

Your product:



704.011.6 Actuator

FRONT

Front dimension:	Ø 29 mm
Front bezel colour:	Nature
Front bezel material:	Aluminium
Front form:	round

MOUNTING

Design:	raised
---------	--------

OPERATING-/INDICATION PART

Lens shape:	flush
Lens colour:	Blue
Lens optics:	opaque
Lens illumination:	non illuminative
Lens material:	Aluminium

ELECTRICAL CHARACTERISTICS

Standards:	The switches comply with the "Standards for low-voltage switching devices" DIN EN 60947-1
------------	-------------------------------------------------------------------------------------------

MECHANICAL CHARACTERISTIC

Weight:	0.04 kg
Mechanical lifetime:	≤3 Mio. cycles of operation
Switching action:	Momentary

Operating force: 8 N

Operating Travel: ca. 5.8 mm ± 0.2 mm

AMBIENT CONDITION

IP Protection: IP65 front side

Operating temperature: – 40 °C ... + 55 °C

Storage temperature: – 40 °C ... + 85 °C

OTHER

Housing material: Plastic

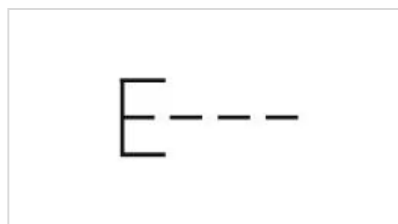
Housing colour: Grey

max. number of switching elements: 3

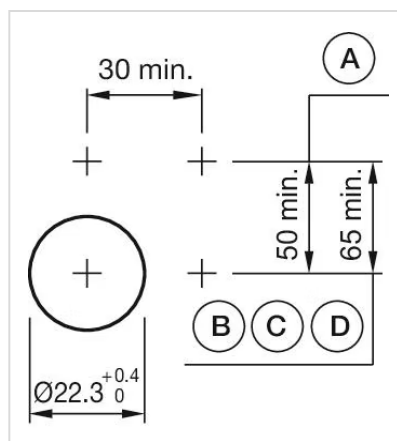
Hints: Frontring with protective cover to be mounted with a torque of 0.4 Nm onto actuator, Max. 3 switching elements can be clipped on

Short Description: Actuator, Ø 29 mm, flush, non illuminative, Blue, Aluminium, opaque, round, Nature, Aluminium, anodised, Momentary

Wiring diagrams:

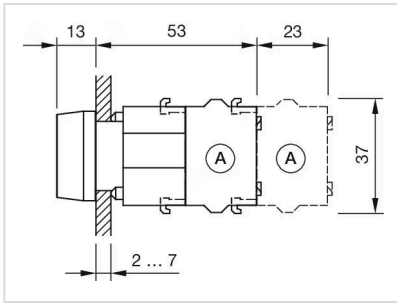


Mounting cut-outs:



A = Screw terminal
 B = Push-in terminal (PIT)
 C = Plug-in terminal 6.3 mm x 0.8 mm
 D = Double plug-in terminal 6.3 mm x 0.8 mm

Dimension drawings:



A = Screw terminal