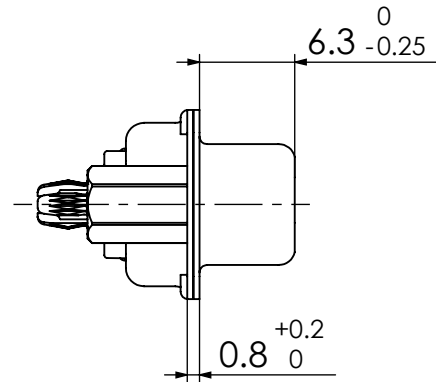
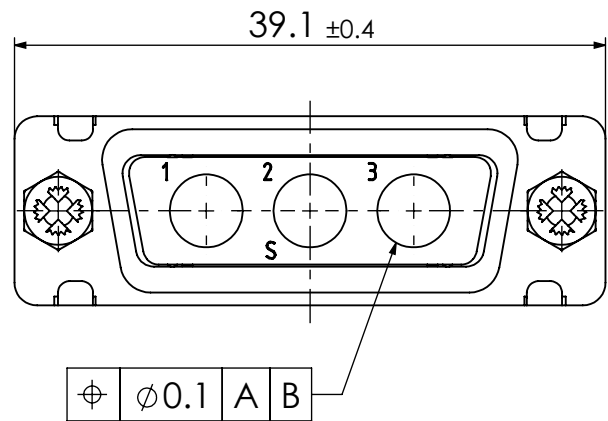
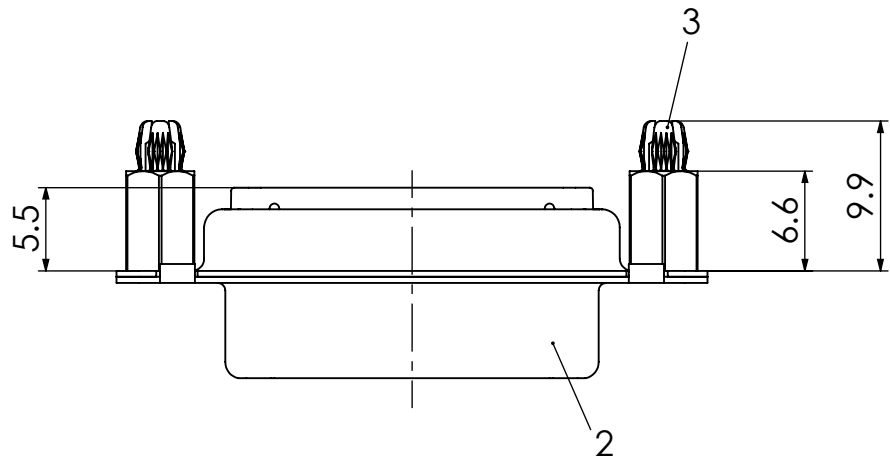
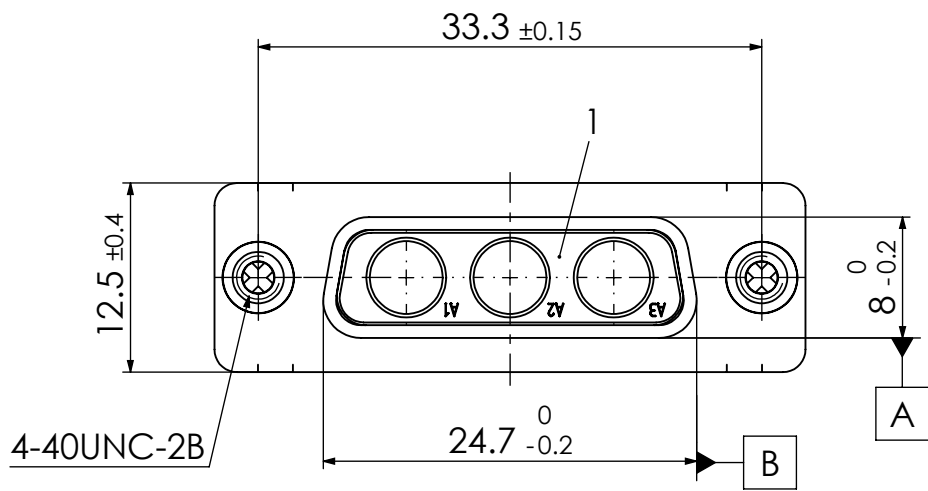
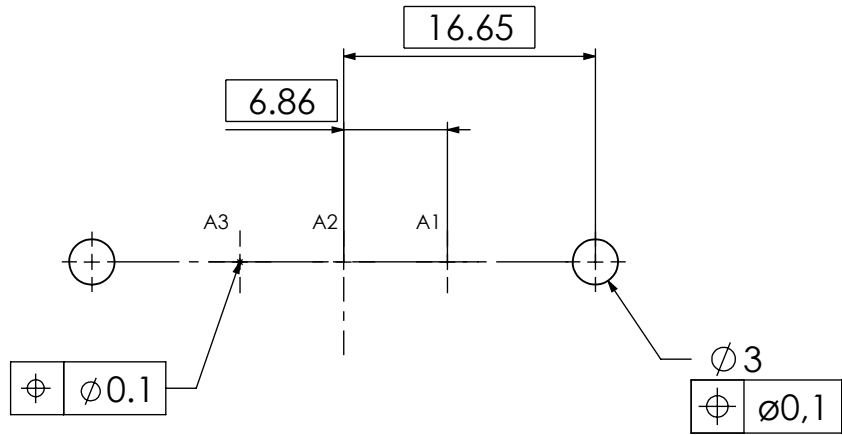


COMMENT:
ALL RIGHTS ARE RESERVED BY US FOR THIS DRAWING. WITHOUT OUR PRIOR CONSENT,
IT MAY NEITHER BE DUBICATED NOR MADE AVAILABLE TO A THIRD PARTY.
AND IT ALSO MAY NOT BE IMPROPERLY USED BY TE RECEIVER, OR A THIRD PARTY.



PCB hole pattern, mounting side



| | | | | |
|-----|-----|--------------|------------------------------------|------------------------------|
| 3 | 2 | Snap-in bolt | PCB 1.6mm / Brass | tin plated |
| 2 | 1 | Shell | Steel | tin plated |
| 1 | 1 | Insulator | PBT (-55°C to +130°C) acc. UL94V-0 | green |
| No. | St. | Part | Type Description/Material | Surface plating/Colour/Class |

| | | | | | | | | | | |
|--|---|--|--------------|--------------------------|--|--|--|----------------------------------|--|--|
| FUNCTIONAL SYMBOLS <div>▽ = 0</div> <div>▽ = 0</div> <div>▽ = 0</div> | THIS DRAWING CONTAINS INFORMATION THAT IS PROPRIETARY TO MOLEX ELECTRONIC TECHNOLOGIES, LLC AND SHOULD NOT BE USED WITHOUT WRITTEN PERMISSION | | | | | | | | | |
| | DIMENSION UNITS mm | | SCALE 2:1 | | MEASUREMENTS WITHOUT TOLERANCE ACC. TO ISO 2768-m | | | <div>molex</div> | | |
| | | | | | | | | | | |
| | | | | | CURRENT REVISION | | | FCT D-Sub Mixed-Layout Connector | | |
| | | | | DRWN: DRAWN BY mteubel | | | | | | |