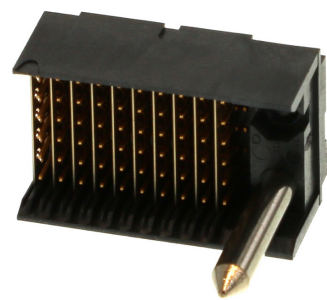




Part Number : [740591002](#)
Product Description : VHDM Single-Ended Board-to-Board Backplane Header, 2.00mm Pitch, Vertical, 6 Rows, Guide Pin Signal Module, Shield End Version, 60 Circuits, 10 Columns, Pin Length 6.25mm
Series Number : 74059
Status : Active
Product Category : Backplane Connectors



Documents & Resources


Drawings
[740591002_sd.pdf](#)

3D Models and Design Files
[740591002_stp.zip](#)

Specifications
[PS-74031-999-001.pdf](#)

Product Environment Compliance

Compliance

GADSL/IMDS	Not Relevant
China RoHS	
EU ELV	Not Relevant
Low-Halogen Status	Low-Halogen per IEC 61249-2-21
REACH SVHC	Not Contained per D(2024)4144-DC (27 June 2024)
EU RoHS	Compliant per EU 2015/863

- Multiple Part Product Compliance Statements
- Eu RoHS
 - REACH SVHC
 - Low-Halogen

- Multiple Part Industry Compliance Documents
- IPC 1752A Class C
 - IPC 1752A Class D

- Molex Product Compliance Declaration
- IEC-62474
- chemSHERPA (xml)

EU RoHS Certificate of Compliance

Part Details

General

Status	Active
Category	Backplane Connectors
Series	74059
Description	VHDM Single-Ended Board-to-Board Backplane Header, 2.00mm Pitch, Vertical, 6 Rows, Guide Pin Signal Module, Shield End Version, 60 Circuits, 10 Columns, Pin Length 6.25mm
Application	Backplane
Comments	No Keying Position
Component Type	PCB Header
Product Name	VHDM
UPC	800754780742

Agency

UL	E29179
----	--------

Electrical

Current - Maximum per Contact	2.0A
Data Rate	3.125 Gbps
Shield Type	Ground Plane Shield
Shielded	Yes
Voltage - Maximum	120V AC (RMS)/DC

Physical

Circuits (Loaded)	60
Circuits (maximum)	60
Color - Resin	Black
Durability (mating cycles max)	200

First Mate / Last Break	No
Flammability	94V-0
Guide to Mating Part	Yes
Keying to Mating Part	None
Material - Metal	Beryllium Copper, High Performance Alloy (HPA), Stainless Steel
Material - Plating Mating	Gold
Material - Plating Termination	Matte Tin
Material - Resin	High Temperature Thermoplastic
Net Weight	7.156/g
Number of Columns	10
Number of Pairs	Open Pin Field
Number of Rows	6
Orientation	Vertical
Packaging Type	Tube
PC Tail Length	2.50mm
PCB Locator	No
PCB Retention	None
PCB Thickness - Recommended	1.80mm
Pitch - Mating Interface	2.00mm
Pitch - Termination Interface	1.00mm
Polarized to PCB	Yes
Temperature Range - Operating	-55° to +105°C
Termination Interface Style	Through Hole - Compliant Pin

Application Tooling

Global

Description	Part Number
Signal Pin Inserter Repair Tool	<u>622015700</u>
6-Row Pin and Shield Repair Tool	<u>622015800</u>
6-Row Shield Extraction Tool	<u>622016000</u>