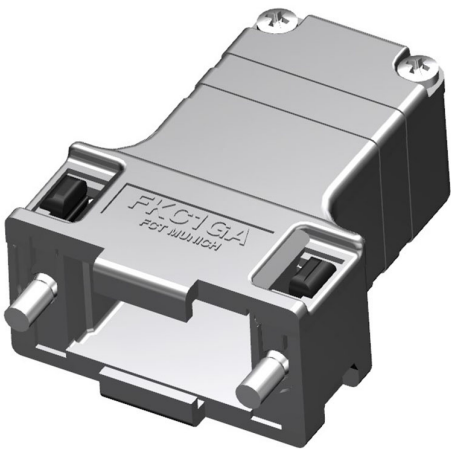




Part Number : [1731110315](#)
Product Description : FCT Plastic Backshell for D-Sub Connector, Shielded, Shell Size 1, Straight Cable Outlet, Large Inner Chamber, Small Cable Outlet, with #4-40 Locking Screws
Series Number : 173111
Status : Active
Product Category : D-Sub Backshells
Engineering Number : FKC1GA-K1216




Documents & Resources

Drawings
[1731110315_sd.pdf](#)

Product Environment Compliance

Compliance

GADSL/IMDS	Not Relevant
China RoHS	
EU ELV	Not Relevant
Low-Halogen Status	Not Low-Halogen per IEC 61249-2-21
REACH SVHC	Not Contained per D(2024)4144-DC (27 June 2024)
EU RoHS	Compliant per EU 2015/863

Multiple Part Product Compliance Statements

- Eu RoHS
- REACH SVHC
- Low-Halogen

Multiple Part Industry Compliance Documents

- IPC 1752A Class C
- IPC 1752A Class D
- Molex Product Compliance Declaration
- IEC-62474

Part Details

General

Status	Active
Category	D-Sub Backshells
Series	173111
Description	FCT Plastic Backshell for D-Sub Connector, Shielded, Shell Size 1, Straight Cable Outlet, Large Inner Chamber, Small Cable Outlet, with #4-40 Locking Screws
Magnetic	Yes
Product Name	FCT Products
Type	Plastic
UPC	191128408011

Electrical

Shield Type	Shielded Plastic
Shielded	Yes

Physical

Cable Diameter	4.00-11.00mm
Material - Backshell	ABS
Material - Screw	Steel
Mounting Style	Locking Screw
Net Weight	15.000/g
Orientation	Straight
Packaging Type	Carton
Plating - Backshell	Nickel
Temperature Range - Operating	-35° to +95°C
Thread Size	4-40 UNC
Tightening Test Torque	40 Ncm
Waterproof / Dustproof	No

Use with Part(s)

Description	Part Number
Use With	FCT D-Sub, Size 1
