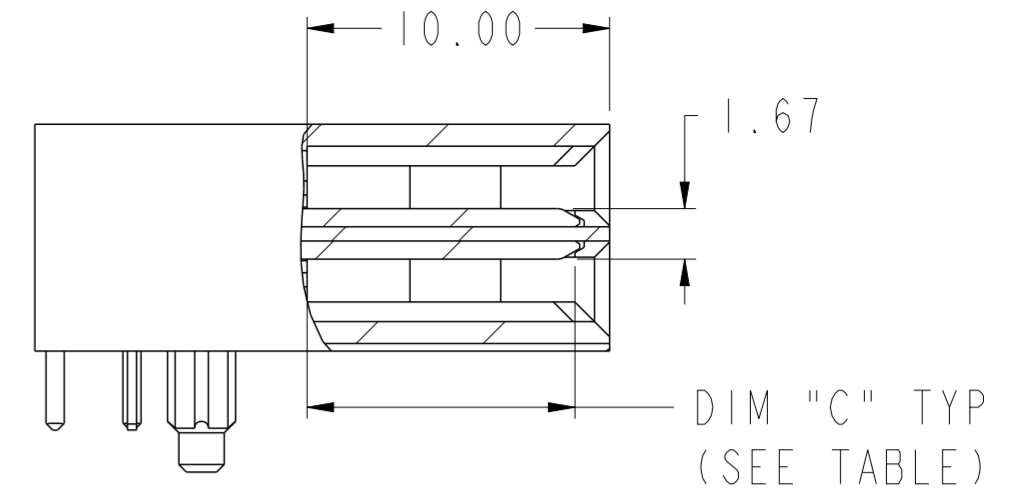
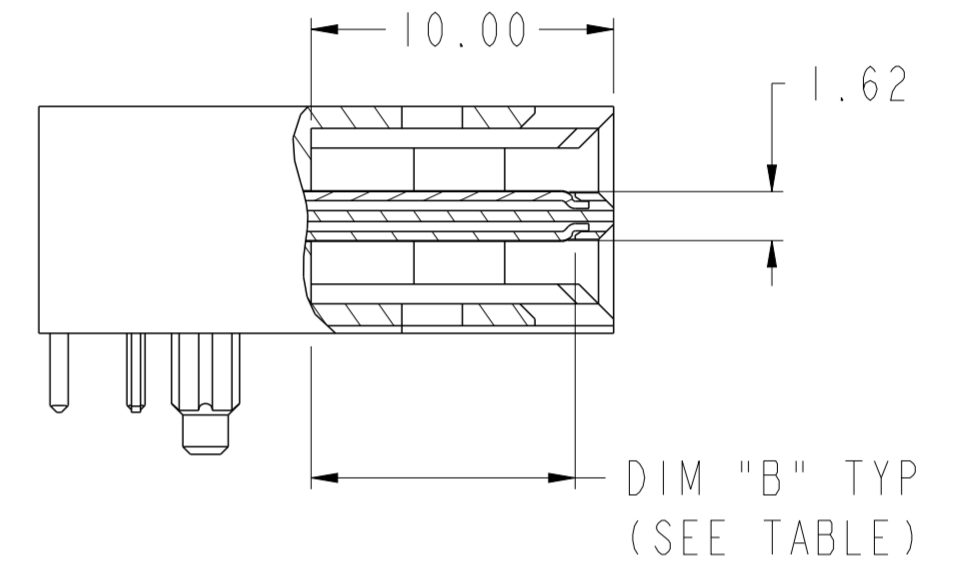


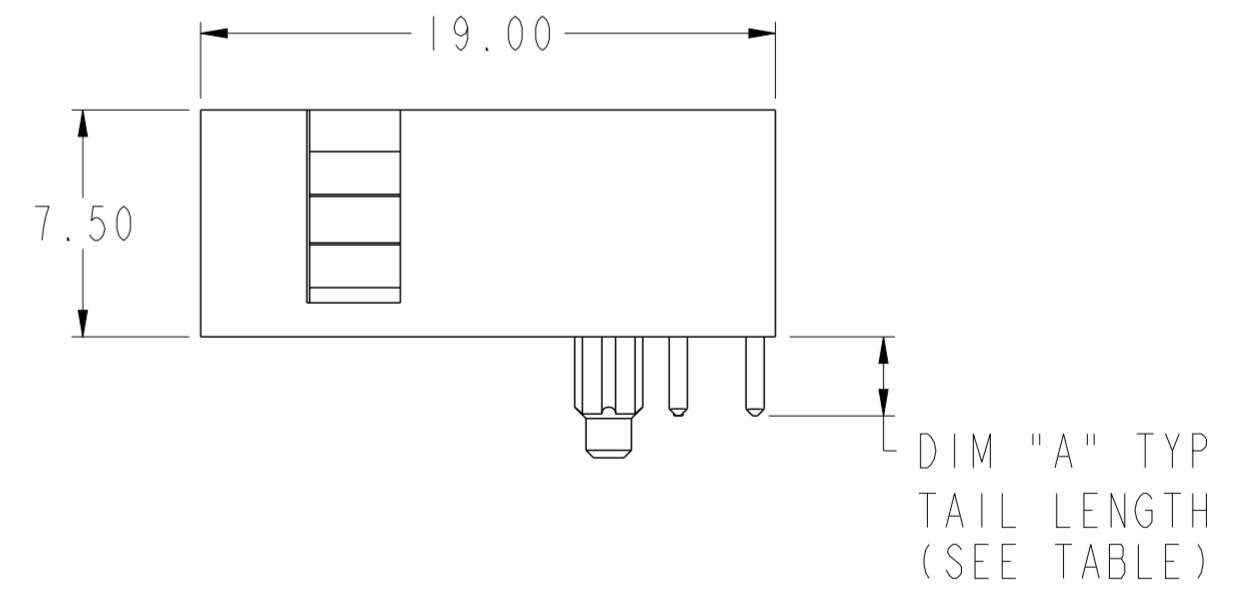
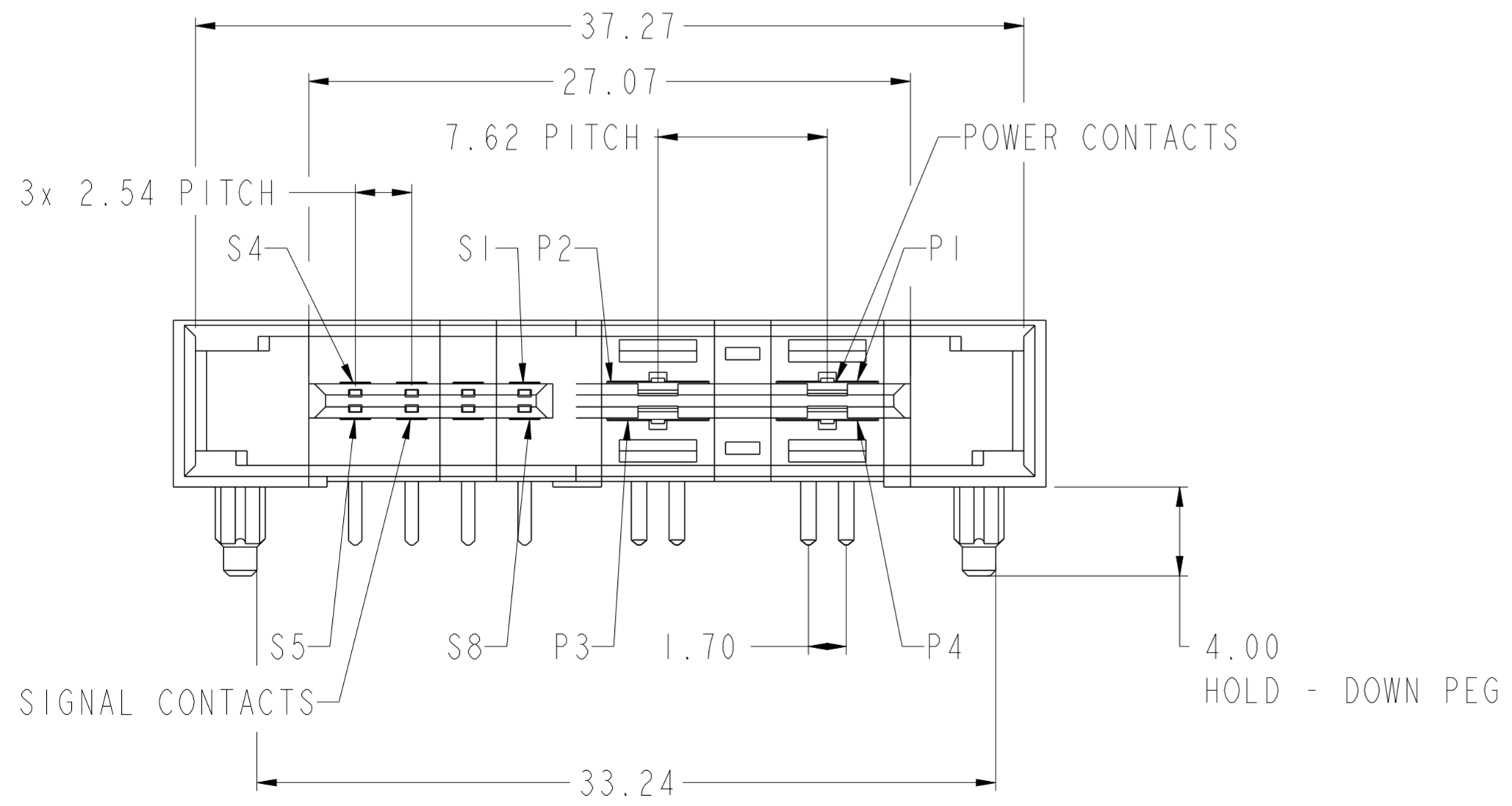
NOTE 5



SECTION B-B
SCALE 4:1



SECTION A-A
SCALE 4:1

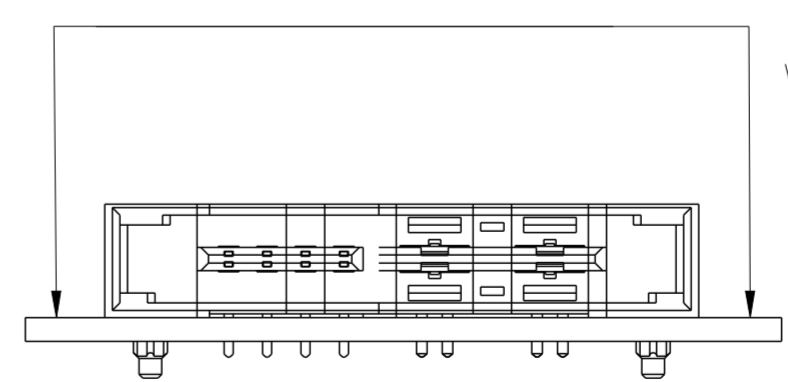
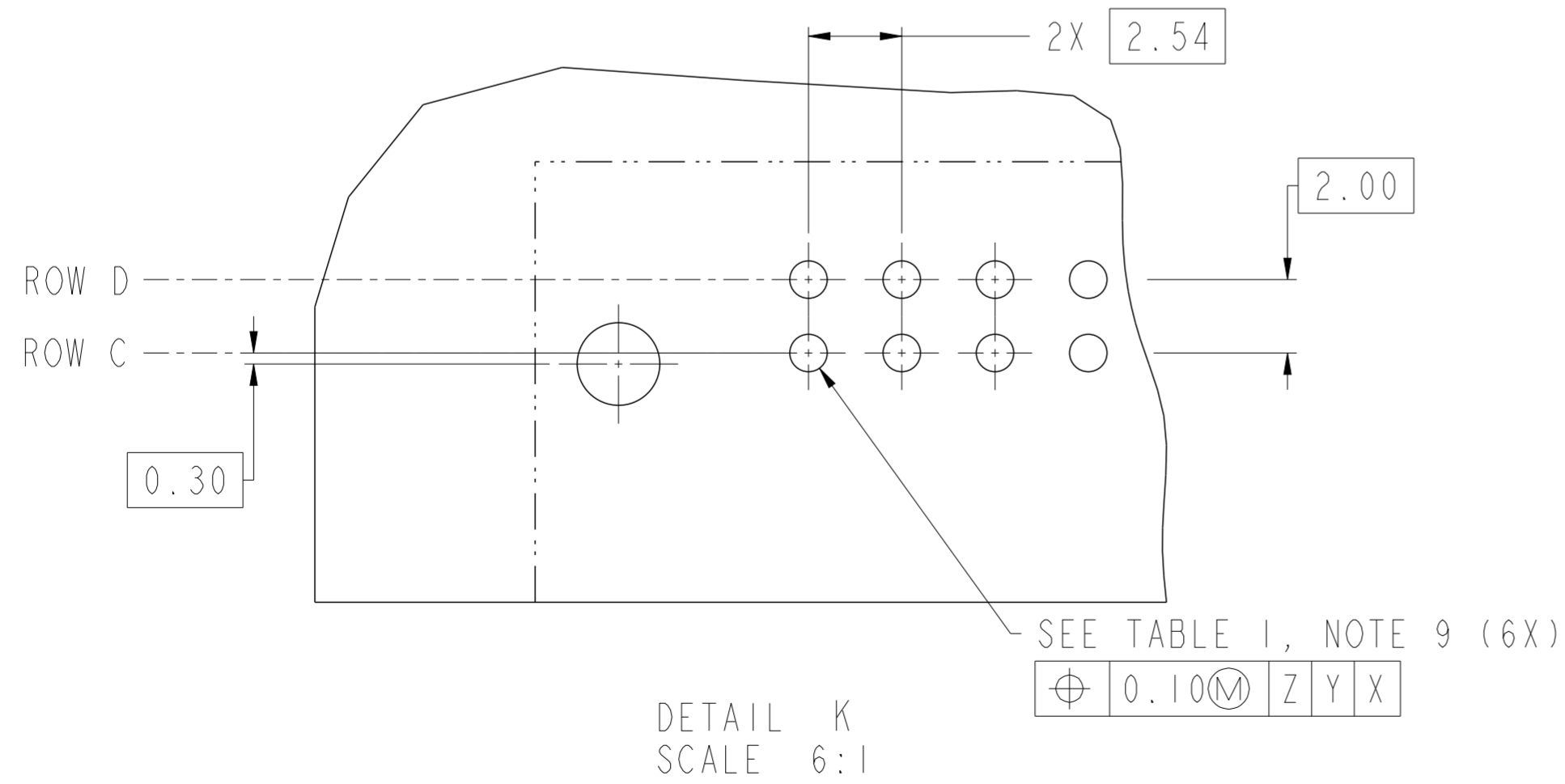
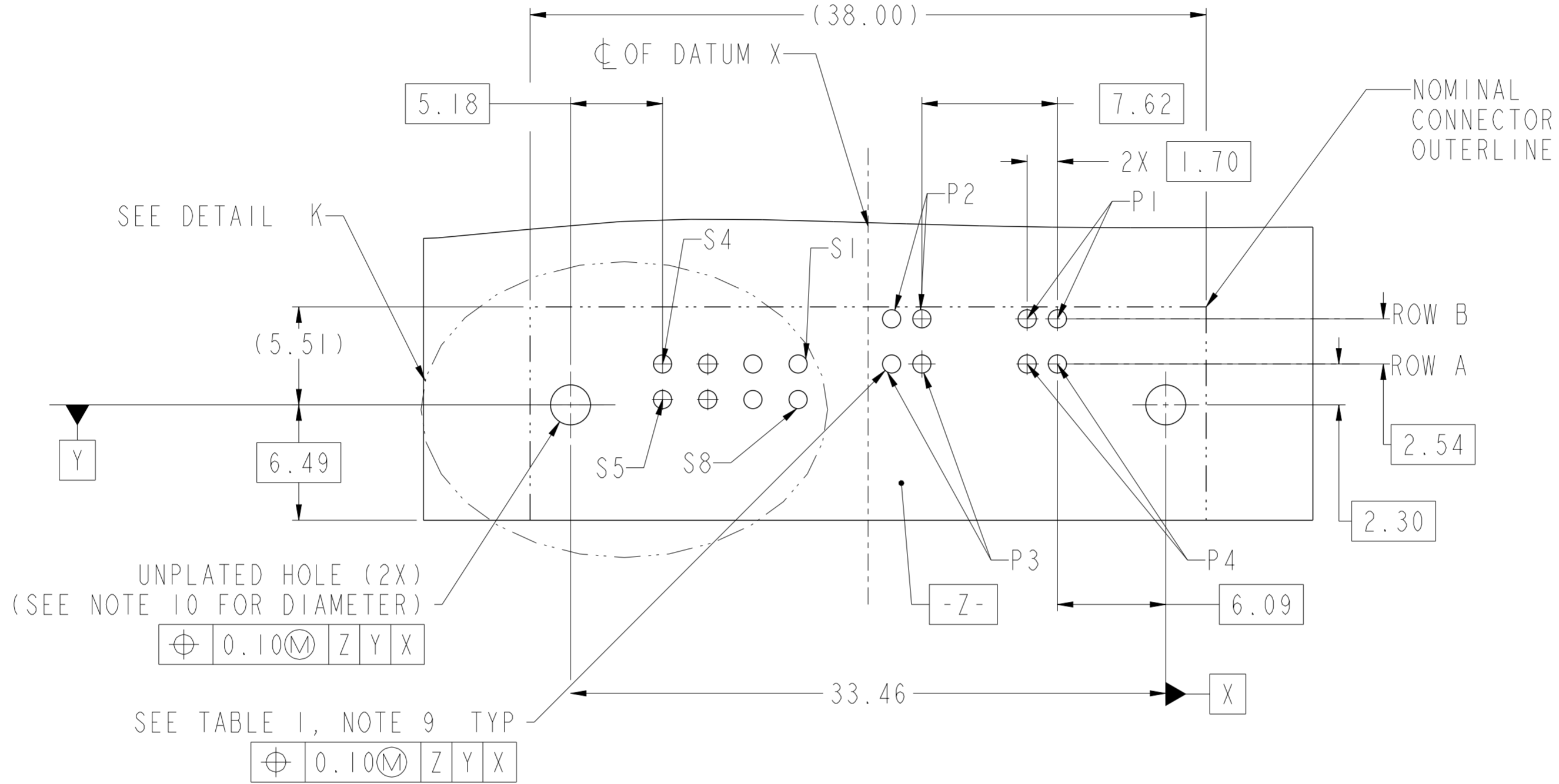


DIM "A" TYP
TAIL LENGTH
(SEE TABLE)

Copyright FCI.
FCI

spec ref	-	dr	Hai-Ling Liu	2015/1/23	projection	MM	size	A2	scale	3:1									
tolerance std	ASME Y14.5	eng	Hai-Ling Liu	2015/12/02			ecn no	-	rel level	Released									
TOLERANCES UNLESS OTHERWISE SPECIFIED		chr	Terris Liu	2015/12/02															
		appr	Pai-Ming Zheng	2015/12/02															
surface	<table border="1"> <tr> <td>linear</td> <td>0.X</td> <td>±0.5</td> </tr> <tr> <td></td> <td>0.XX</td> <td>±0.25</td> </tr> <tr> <td></td> <td>0.XXX</td> <td>±0.10</td> </tr> <tr> <td>angular</td> <td>0°</td> <td>±2°</td> </tr> </table>	linear	0.X	±0.5		0.XX	±0.25		0.XXX	±0.10	angular	0°	±2°			title HPCE CTB RA HEADER 4HP8S		dwg no 10137807	rev A
linear	0.X	±0.5																	
	0.XX	±0.25																	
	0.XXX	±0.10																	
angular	0°	±2°																	
ASME Y14.5		www.fci.com		cat. no.	Product - Customer Drw		sheet 1 of 3												

CONTACT TYPE	TOP LAYER DESCRIPTION	TABLE 1 (HPCE / SOLDER TAILS) PLATED THROUGH-HOLE REQUIREMENTS				
		DRILLED HOLE DIAMETER	COPPER THICKNESS	TIN-LEAD THICKNESS	TIN THICKNESS	FINISHED HOLE DIAMETER
POWER & SIGNAL	TIN-LEAD	1.10-1.16 (1.15 DRILL)	0.025 - 0.050	0.005 - 0.015	--	0.94 - 1.10
	IMMERSION TIN	1.10-1.16 (1.15 DRILL)	0.025 - 0.050	--	0.9 - 1.5um	0.94 - 1.10
	COPPER (SEE NOTE 8)	1.10-1.16 (1.15 DRILL)	0.025 - 0.050	--	--	0.94 - 1.10



spec ref	-	dr	Hai-Ling Liu	2015/11/23	projection	MM	size	A2	scale	3:1
tolerance std	ASME Y14.5	eng	Hai-Ling Liu	2015/12/02	chr	Terris Liu	2015/12/02	ecn no	-	
TOLERANCES UNLESS OTHERWISE SPECIFIED		appr	Pei-Ming Zheng	2015/12/02	product family	HPCE	rel level	Released		
surface	✓	linear	0.X	±0.5	0.XX	±0.25	0.XXX	±0.10	FCI	HPCE CTB RA HEADER
ASME Y14.5	angular	0°	±2°	www.fci.com	cat. no.	-	Product - Customer Drw	sheet 2 of 3	10137807	rev A

Copyright FCI. FCI

PRODUCT PART NUMBER

10137807-□□□□ LF

BASE PART NUMBER

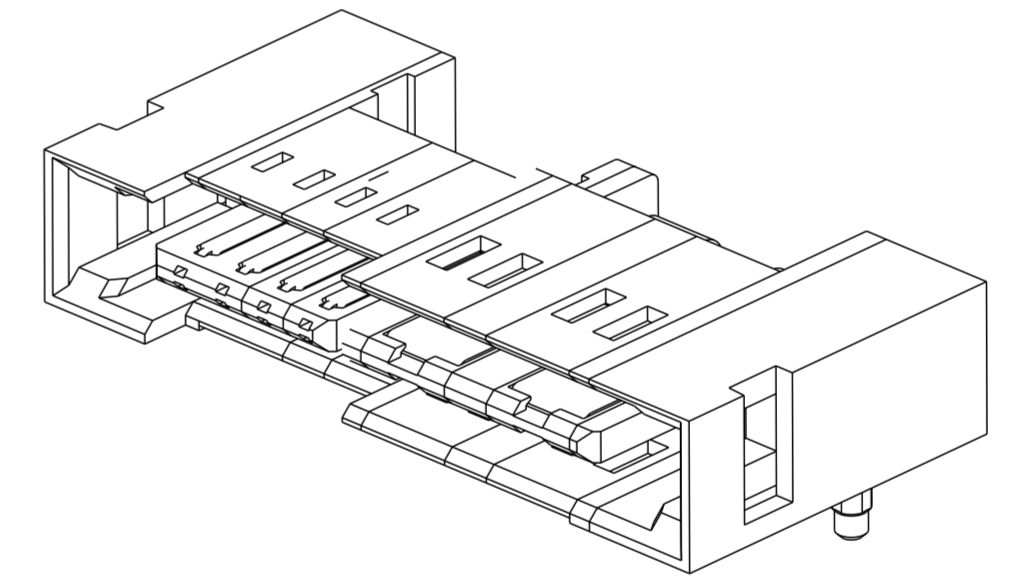
CONTACT AREA PLATING
 UNDERPLATED 50u"(1.27um) MIN. NICKEL
 1: 100u"(2.5um) MIN. Ag
 2: 30u"(0.760um) MIN. GXT

FIRST MATE LAST BREAK PIN POSITION
 000: ALL PINS ARE LONG PINS SEE TABLE

DIM "A", TAIL LENGTH
 1: 2.60±0.25mm (PCB THK 1.57±0.13mm)
 2: 3.25±0.25mm (PCB THK 2.36±0.13mm)

NOTES:

1. CONNECTOR MATERIALS:
 HOUSING: HIGH TEMPERATURE THERMAL PLASTIC, BLACK UL 94V-0 COMPLIANT
 CONTACTS: HIGH PERFORMANCE COPPER ALLOY.
2. CONTACT FINISH REF. GS-12-1031
3. PRODUCT SPECIFICATION: GS-12-1031
4. APPLICATION SPECIFICATION: GS-20-0369
- ⑤. PRODUCT MARKING ON HOUSING IN AREA SHOWN MEETS FCI SPECIFICATION GS-24-007.
6. PACKAGING MEETS FCI SPECIFICATION GS-14-2272.
7. ALL HOLE SIZES ARE FINISHED HOLE SIZES.
8. MOUNTING HOLES ARE UNPLATED
 \varnothing 2.25±0.05 FOR SOLDER TAILS



Copyright FCI. FCI

spec ref	-	dr	Hai-Ling Liu	2015/11/23	projection	MM	size	A2	scale	3:1												
tolerance std	ASME Y14.5	eng	Hai-Ling Liu	2015/12/02			ecn no	-														
TOLERANCES UNLESS OTHERWISE SPECIFIED		chr	Terris Liu	2015/12/02			rel level	Released														
surface	<table border="1"> <tr> <td>linear</td> <td>0.X</td> <td>±0.5</td> </tr> <tr> <td></td> <td>0.XX</td> <td>±0.25</td> </tr> <tr> <td></td> <td>0.XXX</td> <td>±0.10</td> </tr> <tr> <td>angular</td> <td>0°</td> <td>±2°</td> </tr> </table>	linear	0.X	±0.5		0.XX	±0.25		0.XXX	±0.10	angular	0°	±2°	appr	Pai-Ming Zheng	2015/12/02	product family	HPCE	dwg no	10137807	rev	A
linear	0.X	±0.5																				
	0.XX	±0.25																				
	0.XXX	±0.10																				
angular	0°	±2°																				
ASME Y14.5		www.fci.com	cat. no.	-	Product - Customer Drw	sheet 3 of 3																

PDS: Rev :A

STATUS:Released

Printed: Dec 02, 2015

Mouser Electronics

Authorized Distributor

Click to View Pricing, Inventory, Delivery & Lifecycle Information:

[FCI / Amphenol:](#)

[10137807-21000LF](#)