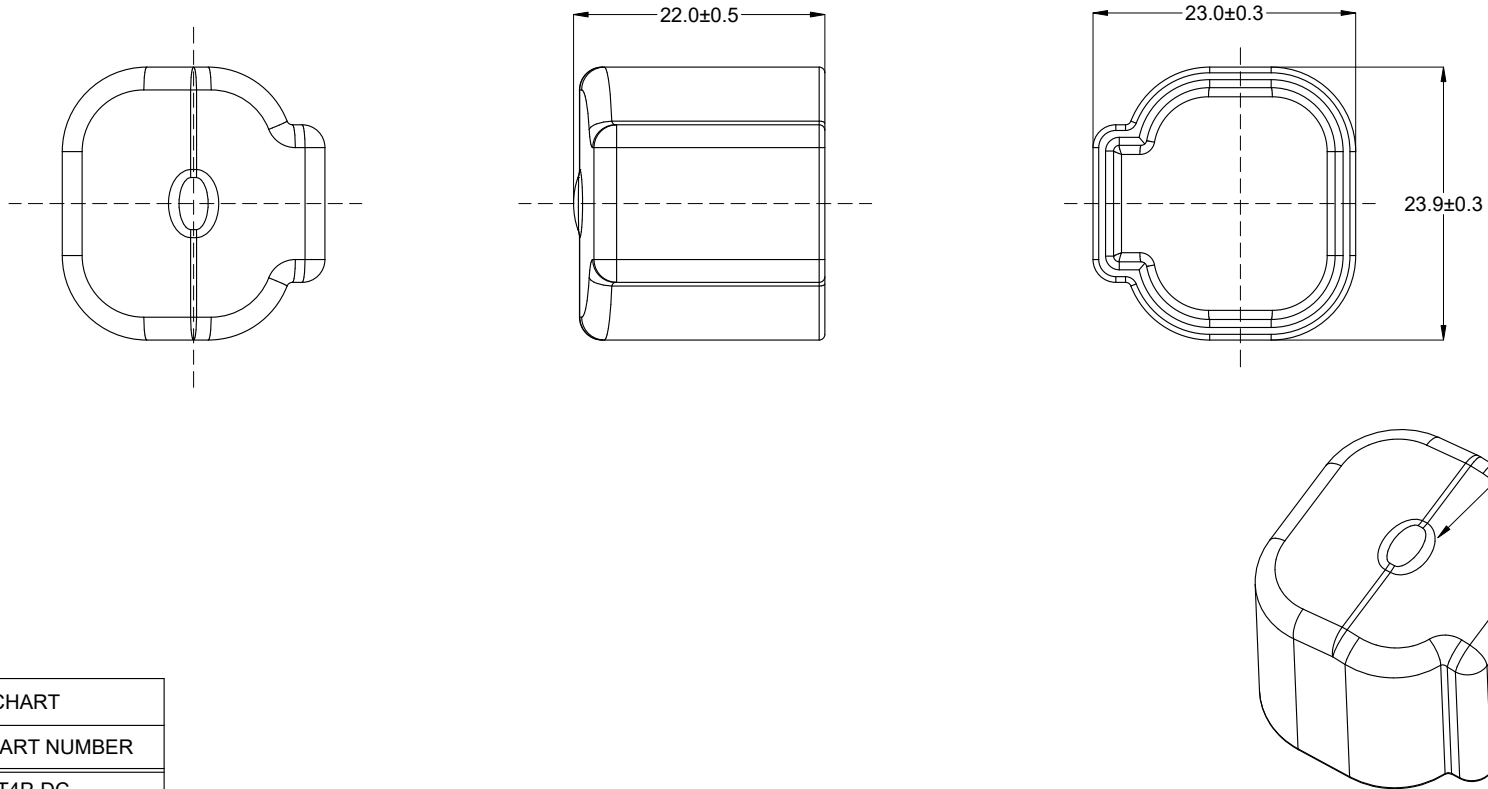
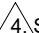



REVISIONS					
REV	ECO	DESCRIPTION	DATE	BY	APPR
A1	-	RELEASE NEW DRAWING	06/OCT/23	HAILEY	TOMMY



PART NUMBER CHART	
COLOR	PART NUMBER
GRAY	AT4P-DC
BLACK	AT4P-DC-BK

NOTES: UNLESS OTHERWISE SPECIFIED

- THIS PART IS USED ON AT04-4P-XXX (XXX=ALL MODIFICATIONS)
- TEMPERATURE RATING: -29°C TO +100°C [-20°F TO +212°F]
- BOTTOM OF PART MOLDED OPEN.
-  SMALL MATERIAL EXTENSION IS ACCEPTABLE ON THIS END ALL AROUND
- ALL DIMENSIONS ARE FOR REFERENCE USE ONLY.

		SEE PART NUMBER CHART			
QUANTITY		PART NUMBER		DESCRIPTION	
				ITEM	
MATERIALS LIST					
<div>UNLESS OTHERWISE SPECIFIED</div> <div>1) All dimensions are in metric(mm).</div> <div>2) Tolerances are as follows:</div> <div>1 PL DEC ±0.30</div> <div>2 PL DEC ±0.15</div> <div>3 PL DEC ±0.08</div> <div>3) Note reference = </div>		SIGNATURES		DATE	
		DRAWN: HAILEY		09/OCT/23	
		CHECKED: ORION		09/OCT/23	
		ENGINEER:			
		APPROVAL: TOMMY		09/OCT/23	
MATERIAL SPECIFICATIONS:		CUSTOMER:		<div>Amphenol</div> <div>Sine Systems - www.amphenol-sine.com</div> <div>44724 Morley Drive</div> <div>Clinton Township, MI 48036</div> <div>PROTECTIVE CAP,RECEPTACLE,4 POS,AT</div>	
PVC 3.9g					
PROCESS SPECIFICATIONS:		THIS DRAWING IS SUPPLIED FOR INFORMATION ONLY. DESIGN FEATURES, SPECIFICATIONS AND PERFORMANCE DATA SHOWN HEREON ARE THE PROPERTY OF THE AMPHENOL CORPORATION. NO RIGHTS OF REPRODUCTION ARE IMPLIED. ALL DIMENSIONS ARE SUBJECT TO NORMAL MANUFACTURING VARIATIONS.			
NEXT ASSY:					
		SIZE	TYPE	DWG NO:	REVISION
		A	C-	AT4P-DC-XX	A1
		SCALE:	NONE	SHEET 1 OF 1	