

FBS 50-3,5 BU - Plug-in bridge

3000708

<https://www.phoenixcontact.com/us/products/3000708>



Please be informed that the data shown in this PDF document is generated from our online catalog. Please find the complete data in the user documentation. Our general terms of use for downloads are valid.



Plug-in bridge, pitch: 3.5 mm, number of positions: 50, color: blue

Your advantages

- The 2- to 50-pos. jumpers can bridge up to 50 terminal blocks in the two bridge shafts of the CLIPLINE complete system in one step

Commercial data

Item number	3000708
Packing unit	10 pc
Minimum order quantity	10 pc
Sales key	BE29
Product key	BE2Z2X
Catalog page	Page 403 (C-1-2019)
GTIN	4046356675987
Weight per piece (including packing)	20.6 g
Weight per piece (excluding packing)	16.9 g
Customs tariff number	85366990
Country of origin	DE

FBS 50-3,5 BU - Plug-in bridge

3000708

<https://www.phoenixcontact.com/us/products/3000708>



Technical data

Notes

Note on application	Version with single- or double-sided cutting edge. Please keep in mind the possible impact on touch protection as well as air clearances and creepage distances.
---------------------	------------------------------------------------------------------------------------------------------------------------------------------------------------------

Product properties

Product type	Plug-in bridge
Number of positions	50
Pitch	3.5 mm

Data management status

Article revision	03
------------------	----

Electrical properties

Maximum load current	17.5 A (The current values for the jumpers can deviate when used in different modular terminal blocks. The precise values can be found in the accessories data for the respective modular terminal blocks.)
----------------------	-------------------------------------------------------------------------------------------------------------------------------------------------------------------------------------------------------------

Connection data

Maximum load current	17.5 A (The current values for the jumpers can deviate when used in different modular terminal blocks. The precise values can be found in the accessories data for the respective modular terminal blocks.)
----------------------	-------------------------------------------------------------------------------------------------------------------------------------------------------------------------------------------------------------

Dimensions

Pitch	3.5 mm
-------	--------

Material specifications

Color	blue (RAL 5015)
Material	Copper
Flammability rating according to UL 94	V0
Insulating material	PA

Environmental and real-life conditions

Ambient conditions

Ambient temperature (operation)	-60 °C ... 110 °C (Operating temperature range incl. self-heating; for max. short-term operating temperature, see RTI Elec.)
Ambient temperature (storage/transport)	-25 °C ... 60 °C (for a short time, not exceeding 24 h, -60 °C to +70 °C)
Ambient temperature (assembly)	-5 °C ... 70 °C
Ambient temperature (actuation)	-5 °C ... 70 °C
Permissible humidity (operation)	20 % ... 90 %
Permissible humidity (storage/transport)	30 % ... 70 %

FBS 50-3,5 BU - Plug-in bridge

3000708

<https://www.phoenixcontact.com/us/products/3000708>



Mounting

Mounting type	Plug-in mounting
---------------	------------------

FBS 50-3,5 BU - Plug-in bridge

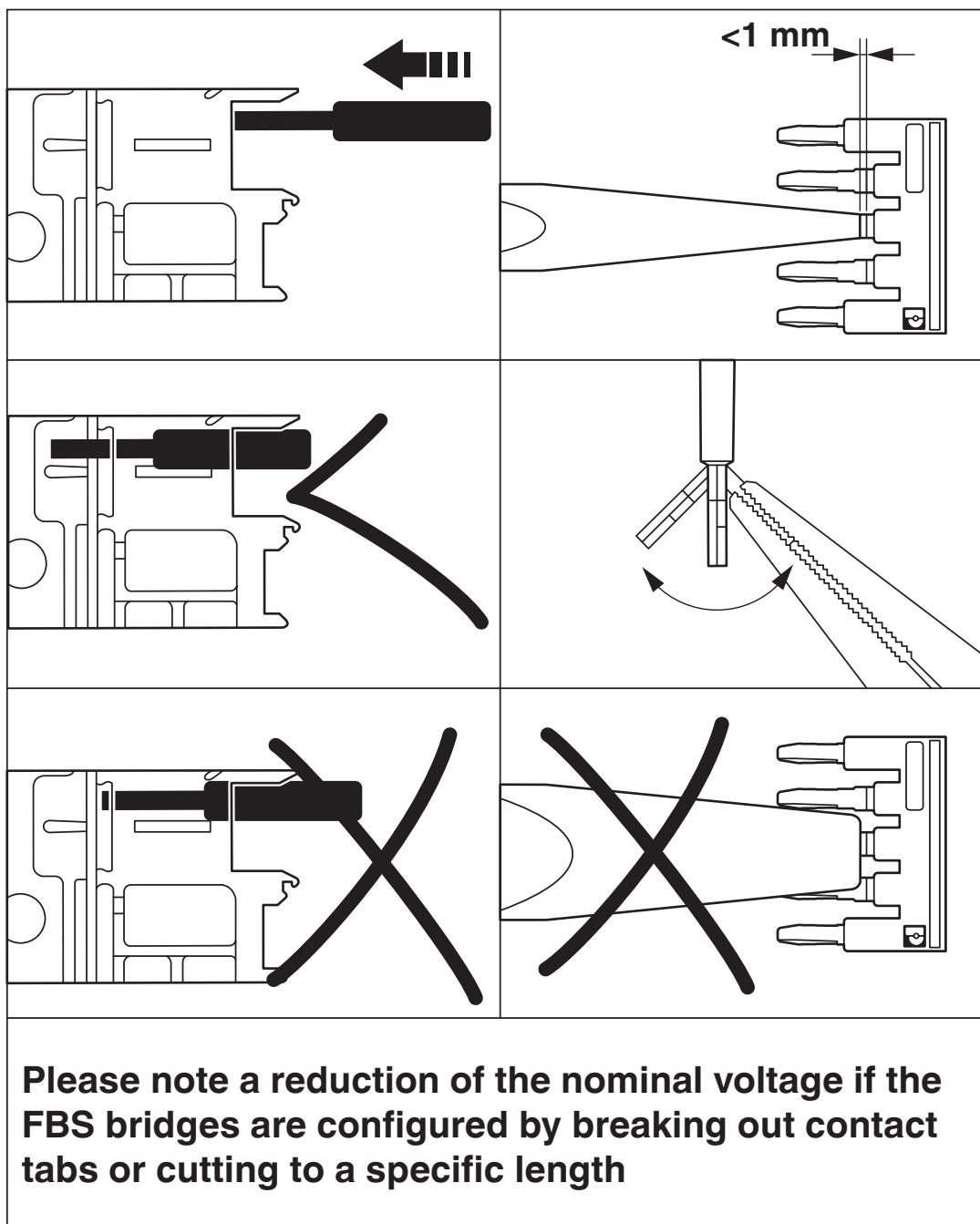
3000708

<https://www.phoenixcontact.com/us/products/3000708>



Drawings

Schematic diagram



FBS 50-3,5 BU - Plug-in bridge

3000708

<https://www.phoenixcontact.com/us/products/3000708>



Classifications

ECLASS

ECLASS-11.0	27141140
ECLASS-12.0	27141140
ECLASS-13.0	27250303

ETIM

ETIM 9.0	EC000489
----------	----------

UNSPSC

UNSPSC 21.0	39121400
-------------	----------

FBS 50-3,5 BU - Plug-in bridge

3000708

<https://www.phoenixcontact.com/us/products/3000708>



Environmental product compliance

EU RoHS	
Fulfills EU RoHS substance requirements	Yes, No exemptions
China RoHS	
Environment friendly use period (EFUP)	EFUP-E
	No hazardous substances above the limits
EU REACH SVHC	
REACH candidate substance (CAS No.)	No substance above 0.1 wt%

Phoenix Contact 2024 © - all rights reserved
<https://www.phoenixcontact.com>

Phoenix Contact USA
586 Fulling Mill Road
Middletown, PA 17057, United States
(+717) 944-1300
info@phoenixcon.com