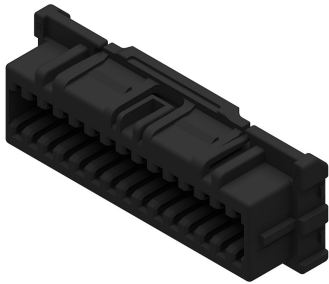




Part Number : [2011962241](#)
Product Description : Spot-On Wire-to-Board
Receptacle Housing, 2.00mm Pitch, Dual Row,
24 Circuits, Black
Series Number : 201196
Status : Active
Product Category : Connector Housings



Documents & Resources

Drawings
[Drawing 2011962241_sd.pdf](#)

3D Models and Design Files
[3D Model 2011962241_stp.zip](#)

Specifications
[Application Specification 2011960000-A00.pdf](#)
[Application Specification 2011960000-A01.pdf](#)
[Packaging Specification 2011969200-200.pdf](#)
[Product Specification 2011960000-PS-000.pdf](#)

Product Environment Compliance

Compliance

GADSL/IMDS	Not Relevant
China RoHS	
EU ELV	Not Relevant
Low-Halogen Status	Not Low-Halogen per IEC 61249-2-21
REACH SVHC	Not Contained per D(2024)4144-DC (27 June 2024)
EU RoHS	Compliant per EU 2015/863

[Multiple Part Product Compliance Statements](#)

- Eu RoHS
- REACH SVHC
- Low-Halogen

[Multiple Part Industry Compliance Documents](#)

- IPC 1752A Class C
- IPC 1752A Class D
- Molex Product Compliance Declaration
- IEC-62474
- chemSHERPA (xml)

EU RoHS Certificate of Compliance

Part Details

General

Status	Active
Category	Connector Housings
Series	201196
Description	Spot-On Wire-to-Board Receptacle Housing, 2.00mm Pitch, Dual Row, 24 Circuits, Black
Application	Signal, Wire-to-Board
Product Family	Spot-On Wire-to-Board Connector System
Product Name	Spot-On
UPC	191128246033

Physical

Circuits (maximum)	24
Color - Resin	Black
Gender	Receptacle
Glow-Wire Capable	No
Keying to Mating Part	Yes
Lock to Mating Part	Yes
Material - Resin	PBT
Net Weight	1635.000/mg
Number of Rows	2
Packaging Type	Bag
Panel Mount	No
Pitch - Mating Interface	2.00mm
Pitch - Termination Interface	2.00mm
Polarized to Mating Part	Yes

Temperature Range - Operating	-40° to +105°C
-------------------------------	----------------

Mates With / Use With

Mates with Part(s)

Description	Part Number
2.00mm Pitch, Spot-On Vertical Dual Row Headers with Potting Capability	<u>201197</u>

Use with Part(s)

Description	Part Number
Spot-On 2.0 Crimp Terminal, Female, Matte Tin (Sn) Plating, 22-26 AWG	<u>2011956000</u>
Spot-On Terminal Position Assurance (TPA) Wire-to-Board Retainer, 2.00mm Pitch, 12 Circuits, Gray	<u>2011964120</u>