

DESIGNED AND DIMENSIONED IN MILLIMETERS[INCHES]
ALL DIMENSIONS REFERENCE EXCEPT AS SHOWN

**THIS PRODUCT MANUFACTURED
WITH LEAD-FREE PROCESSING**

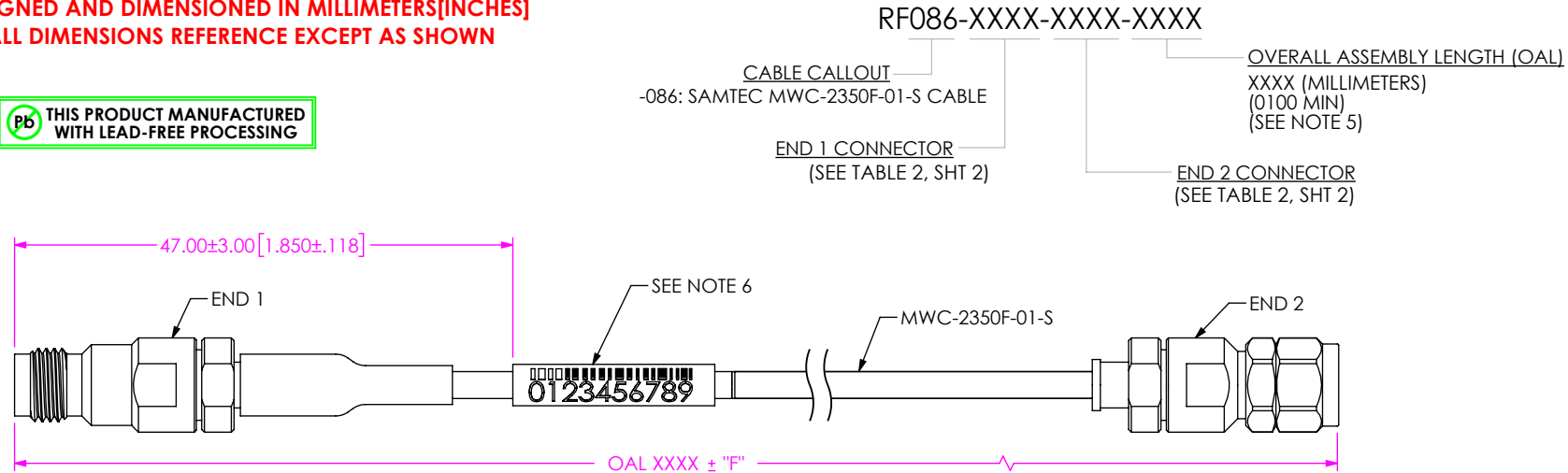
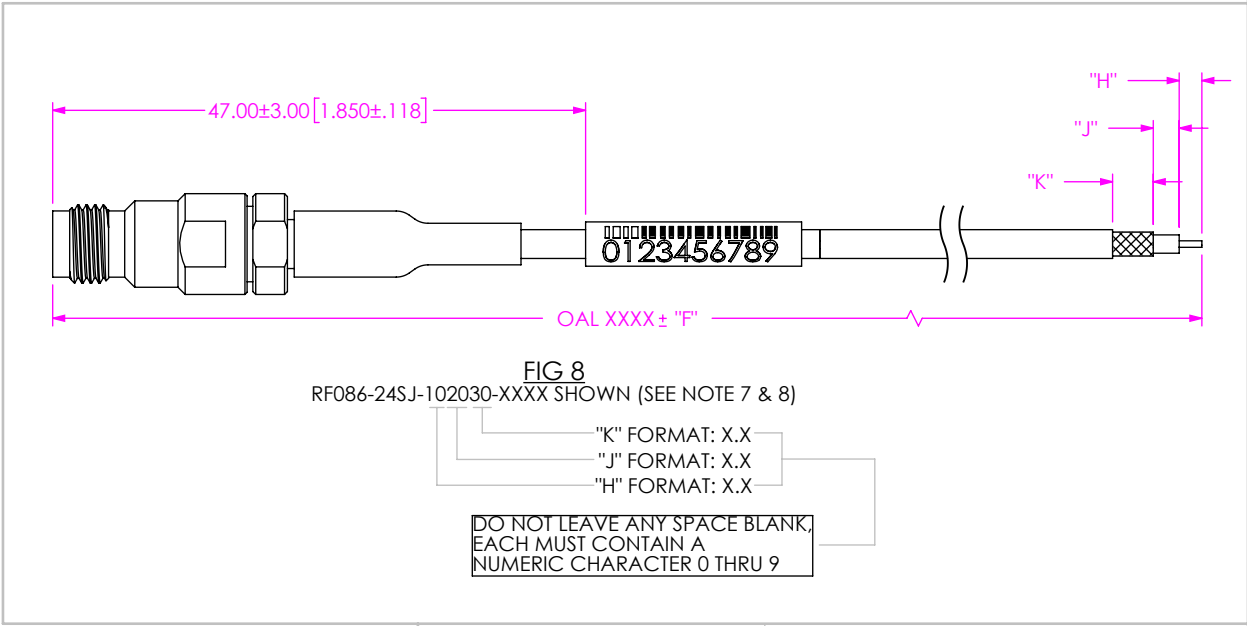


FIG 1
RF086-24SJ-18SP-XXXX SHOWN
(PROTECTIVE CAPS NOT SHOWN FOR CLARITY)

TABLE 1	
OVERALL LENGTH	"F"
0100-0300 [5.98-11.81]	+5.0 [.20] / -0.0 [.00]
0301-1500 [11.85-59.01]	+12.0 [.47] / -0.0 [.00]
1501-3000 [59.09-118.11]	+25.0 [.98] / -0.0 [.00]
3001-7500 [118.15-295.28]	+50.0 [1.97] / -0.0 [.00]
7501-9999 [295.31-393.67]	+1% / -0.0 [.00]



NOTES:

- NOTE DELETED.
- NOTE DELETED.
- CONNECTORS TO BE ORIENTED ACCORDING TO CO-RF-WI-3048-M.
- CABLE ASSEMBLY TO HAVE PROTECTIVE CAP ASSEMBLED ON EACH END AND TO BE INDIVIDUALLY PACKAGED IN ESD BAG.
- CABLE LENGTHS LONGER THAN 1000 MILLIMETERS ARE NOT SUPPORTED BY S.I. TEST DATA.
- ASSEMBLY TO BE 100% TESTED FOR RETURN LOSS AND INSERTION LOSS. LABEL EACH INDIVIDUAL CABLE ASSEMBLY WITH 1 LABEL-SER-02. RETURN LOSS SPECIFICATION IS EQUAL TO THE HIGHEST END OPTION LIMIT.
- DIM "H", "J", AND "K" HAVE A MINIMUM VALUE OF 0.0mm & A MAXIMUM VALUE OF 9.9mm[.39"].
- FOR STRIPPED AND TINNED OPTION, BOTH THE CENTER CONDUCTOR IS TINNED.

F:\DWG\MISC\MKTG\RF086-XXXX-XXXX-XXXX-MKT.SLDDRW

PROPRIETARY NOTE
THIS DOCUMENT CONTAINS CONFIDENTIAL AND PROPRIETARY INFORMATION AND ALL DESIGN, MANUFACTURING, REPRODUCTION, USE, PATENT RIGHTS AND SALES RIGHTS ARE EXPRESSLY RESERVED BY SAMTEC, INC. THIS DOCUMENT SHALL NOT BE DISCLOSED, IN WHOLE OR PART, TO ANY UNAUTHORIZED PERSON OR ENTITY NOR REPRODUCED, TRANSFERRED OR INCORPORATED IN ANY OTHER PROJECT IN ANY MANNER WITHOUT THE EXPRESS WRITTEN CONSENT OF SAMTEC, INC.

MATERIAL: DO NOT SCALE DRAWING
CENTER CONTACTS: COPPER ALLOY SHEET SCALE: 1.5:1
OUT CONTACTS:
-MOSP/-MOSJ/-01SP/-01BJ/-01SB/-00SJ/-00MJ/-GC86: COPPER ALLOY
-24SP/-24SJ/-18SP/-18SJ/-92SP/-92SJ/-00BC/-00BF/-00BL/-00BS: STAINLESS STEEL
INSULATORS:
-MOSP/-MOSJ/-01SP/-01BJ/-01SB/-00SJ/-00MJ/-00BC/-00BF/-00BL/-00BS: VIRGIN PTFE FLUOROCARBON
-24SP/-24SJ/-18SP/-18SJ/-92SP/-92SJ/-GC86: ULTEM

samtec
520 PARK EAST BLVD, NEW ALBANY, IN 47150
PHONE: 812-944-6733 FAX: 812-948-5047
e-Mail: info@SAMTEC.com code 55322

DESCRIPTION: RF086 CABLE ASSEMBLY

DWG. NO. RF086-XXXX-XXXX-XXXX

BY: SHERRY W 1/15/2019 SHEET 1 OF 10

TABLE 2

END OPTION	SERIES	GENDER	FINISH			CONNECTOR KIT P/N (PCI P/N)	FIGURE
			CENTER CONTACT	OUTER CONTACT	CABLE BODY		
-24SP	2.40 MM	PLUG	50μ" GOLD	PASSIVATED	PASSIVATED	PRF24-P-C-EP-086-SS (4190)	SHT 3, FIG 2
-24SJ	2.40 MM	JACK	50μ" GOLD	PASSIVATED	PASSIVATED	PRF24-J-C-EP-086-SS (4216)	SHT 3, FIG 3
-18SP	1.85 MM	PLUG	50μ" GOLD	PASSIVATED	PASSIVATED	PRF18-P-C-EP-086-SS-1	SHT 4, FIG 4
-18SJ	1.85 MM	JACK	50μ" GOLD	PASSIVATED	PASSIVATED	PRF18-J-C-EP-086-SS-1	SHT 4, FIG 5
-M0SP	SMPM	PLUG, FULL DETENT	30μ" GOLD	10μ" GOLD	3μ" GOLD	PRFM0-P-C-EE-086-SD (N/A)	SHT 5, FIG 6
-M0SJ	SMPM	JACK	30μ" GOLD	10μ" GOLD	3μ" GOLD	PRFM0-J-C-EE-086-SD (N/A)	SHT 5, FIG 7
-92SP	2.92 MM	PLUG	50μ" GOLD	PASSIVATED	PASSIVATED	PRF92-P-C-EP-086-SS-1-X (N/A)	SHT 6, FIG 9
-92SJ	2.92 MM	JACK	50μ" GOLD	PASSIVATED	PASSIVATED	PRF92-J-C-EP-086-SS-X (N/A)	SHT 6, FIG 10
-01SP	SMA	PLUG	50μ" GOLD	10μ" GOLD	10μ" GOLD	PRF01-P-C-EG-086-SD (N/A)	SHT 7, FIG 11
-01BJ	SMA	BULKHEAD JACK	50μ" GOLD	10μ" GOLD	10μ" GOLD	PRF01-J-C-EG-086-BD (N/A)	SHT 7, FIG 12
-01SB	SMA	SEALED BULKHEAD JACK	50μ" GOLD	10μ" GOLD	10μ" GOLD	PRF01-J-C-EG-086-BD-1 (N/A)	SHT 8, FIG 13
-00SJ	SMP	JACK	50μ" GOLD	50μ" GOLD	50μ" GOLD	PRF00-J-C-EE-086-SD	SHT 8, FIG 14
-00MJ	SMP	R/A JACK	50μ" GOLD	50μ" GOLD	50μ" GOLD	PRF00-J-C-EE-086-RD	SHT 9, FIG 15
-00BC	SMP	BULKHEAD PLUG, CATCHER'S MITT	50μ" GOLD	10μ" GOLD	10μ" GOLD	PRF00-PC-C-EG-086-BD (N/A)	SHT 10, FIG 17
-00BF	SMP	BULKHEAD PLUG, FULL DETENT	50μ" GOLD	10μ" GOLD	10μ" GOLD	PRF00-PF-C-EG-086-BD (N/A)	
-00BL	SMP	BULKHEAD PLUG, LIMITED DETENT	50μ" GOLD	10μ" GOLD	10μ" GOLD	PRF00-PL-C-EG-086-BD (N/A)	
-00BS	SMP	BULKHEAD PLUG, SMOOTH BORE	50μ" GOLD	10μ" GOLD	10μ" GOLD	PRF00-PS-C-EG-086-BD (N/A)	
-GC86	SMPM	JACK	50μ" GOLD	50μ" GOLD	10μ" GOLD	PRFM0-J-C-EE-086-SD-1	SHT9, FIG 16
**SING	SINGLE ENDED	-	-	-	-	-	-
**XXXXX	STRIPPED & TINNED	-	-	-	-	-	SHT 1, FIG 8

** = END 2 OPTION ONLY

TABLE 3

END OPTION	MAXIMUM RETURN LOSS (PER END)	MAXIMUM VSWR (PER END)	MAXIMUM INSERTION LOSS (IL) (PER END)	FREQUENCY	PROTECTIVE CAP COLOR
-24SP	21.53 dB	1.183	.03+ .03*SQRT(Freq[GHz])	DC TO 50 GHz	GREEN
-24SJ	21.53 dB	1.183	.03+ .03*SQRT(Freq[GHz])	DC TO 50 GHz	GREEN
-18SP	21.53 dB	1.183	.03+ .03*SQRT(Freq[GHz])	DC TO 67 GHz	BLUE
-18SJ	21.53 dB	1.183	.03+ .03*SQRT(Freq[GHz])	DC TO 50 GHz	BLUE
	19.90 dB	1.225		50 GHz TO 67 GHz	
-M0SP	21.53 dB	1.183	.03+ .05*SQRT(Freq[GHz])	DC TO 50 GHz	GRAY
	15.31 dB	1.414		50 GHz TO 67 GHz	
-M0SJ	21.53 dB	1.183	.03+ .05*SQRT(Freq[GHz])	DC TO 50 GHz	GRAY
	15.31 dB	1.414		50 GHz TO 67 GHz	
-92SP	21.53 dB	1.183	.03+ .03*SQRT(Freq[GHz])	DC TO 40 GHz	YELLOW
-92SJ	21.53 dB	1.183	.03+ .03*SQRT(Freq[GHz])	DC TO 40 GHz	YELLOW
-01SP	23.69 dB	1.140	.03+ .03*SQRT(Freq[GHz])	DC TO 26.5 GHz	BROWN
-01BJ	23.69 dB	1.140	.03+ .03*SQRT(Freq[GHz])	DC TO 26.5 GHz	BROWN
-01SB	23.69 dB	1.140	.03+ .03*SQRT(Freq[GHz])	DC TO 26.5 GHz	BROWN
-00SJ	25.08 dB	1.118	.03+ .03*SQRT(Freq[GHz])	DC TO 26.5 GHz	WHITE
	19.90 dB	1.225		26.5 GHz TO 40 GHz	
-00MJ	25.08 dB	1.118	.03+ .03*SQRT(Freq[GHz])	DC TO 26.5 GHz	WHITE
	25.08 dB	1.118		DC TO 26.5 GHz	
-00BC	25.08 dB	1.118	.03+ .03*SQRT(Freq[GHz])	DC TO 26.5 GHz	GRAY
	19.90 dB	1.225		26.5 GHz TO 40 GHz	
-00BF	25.08 dB	1.118	.03+ .03*SQRT(Freq[GHz])	DC TO 26.5 GHz	GRAY
	19.90 dB	1.225		26.5 GHz TO 40 GHz	
-00BL	25.08 dB	1.118	.03+ .03*SQRT(Freq[GHz])	DC TO 26.5 GHz	GRAY
	19.90 dB	1.225		26.5 GHz TO 40 GHz	
-00BS	25.08 dB	1.118	.03+ .03*SQRT(Freq[GHz])	DC TO 26.5 GHz	GRAY
	19.90 dB	1.225		26.5 GHz TO 40 GHz	
-GC86	25.08 dB	1.118	.03+ .05*SQRT(Freq[GHz])	DC TO 18 GHz	N/A
	20.67 dB	1.204		18 GHz TO 60 GHz	
	18.64 dB	1.265		60 GHz TO 65 GHz	

IL Max [dB] for cable assembly:

= (18.77*SQRT(Freq[GHz])+.0.892*Freq[GHz])*OAL[mm]/30480+End Option IL#1(See Table 3)+End Option IL#2(See Table 3)

VSWR MAX FOR CABLE ASSEMBLY:

= END OPTION VSWR#1(SEE TABLE 3)*END OPTION VSWR#2(SEE TABLE 3)

* PROPRIETARY NOTE *

THIS DOCUMENT CONTAINS CONFIDENTIAL AND PROPRIETARY INFORMATION AND ALL DESIGN, MANUFACTURING, REPRODUCTION, USE, PATENT RIGHTS AND SALES RIGHTS ARE EXPRESSLY RESERVED BY SAMTEC, INC. THIS DOCUMENT SHALL NOT BE DISCLOSED, IN WHOLE OR PART, TO ANY UNAUTHORIZED PERSON OR ENTITY NOR REPRODUCED, TRANSFERRED OR INCORPORATED IN ANY OTHER PROJECT IN ANY MANNER WITHOUT THE EXPRESS WRITTEN CONSENT OF SAMTEC, INC.

DO NOT SCALE DRAWING

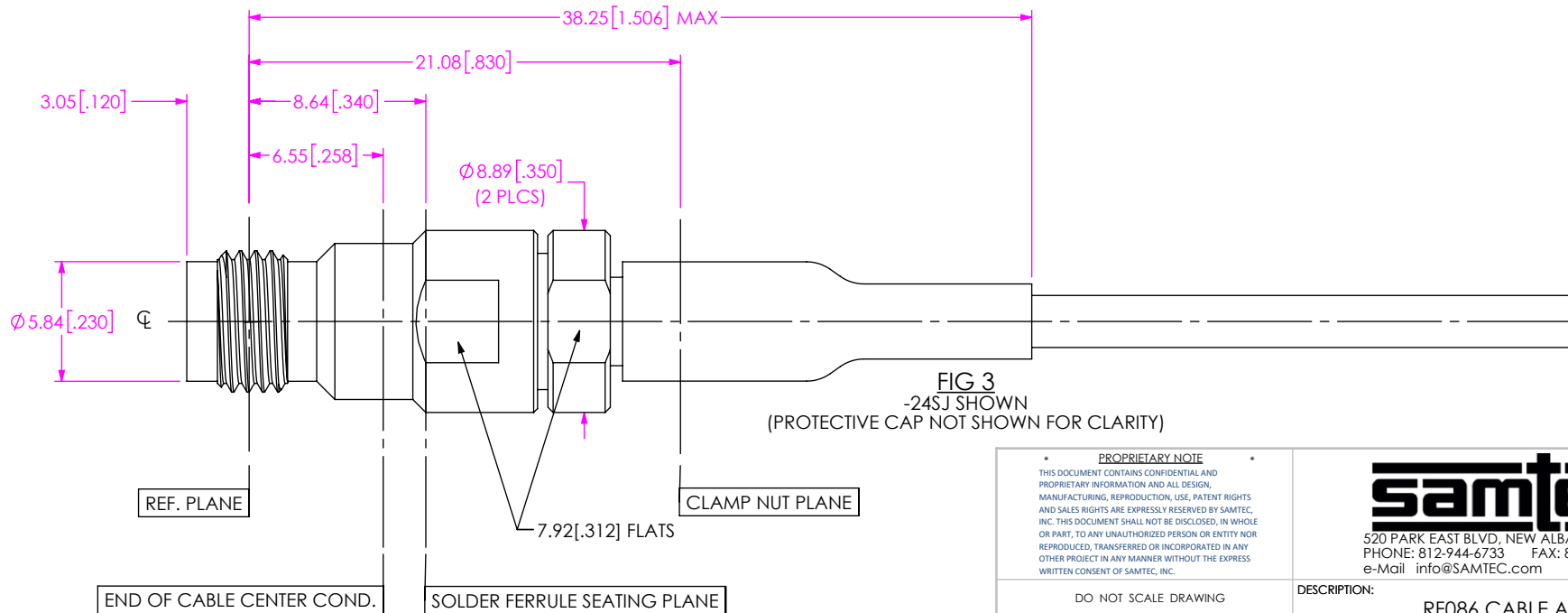
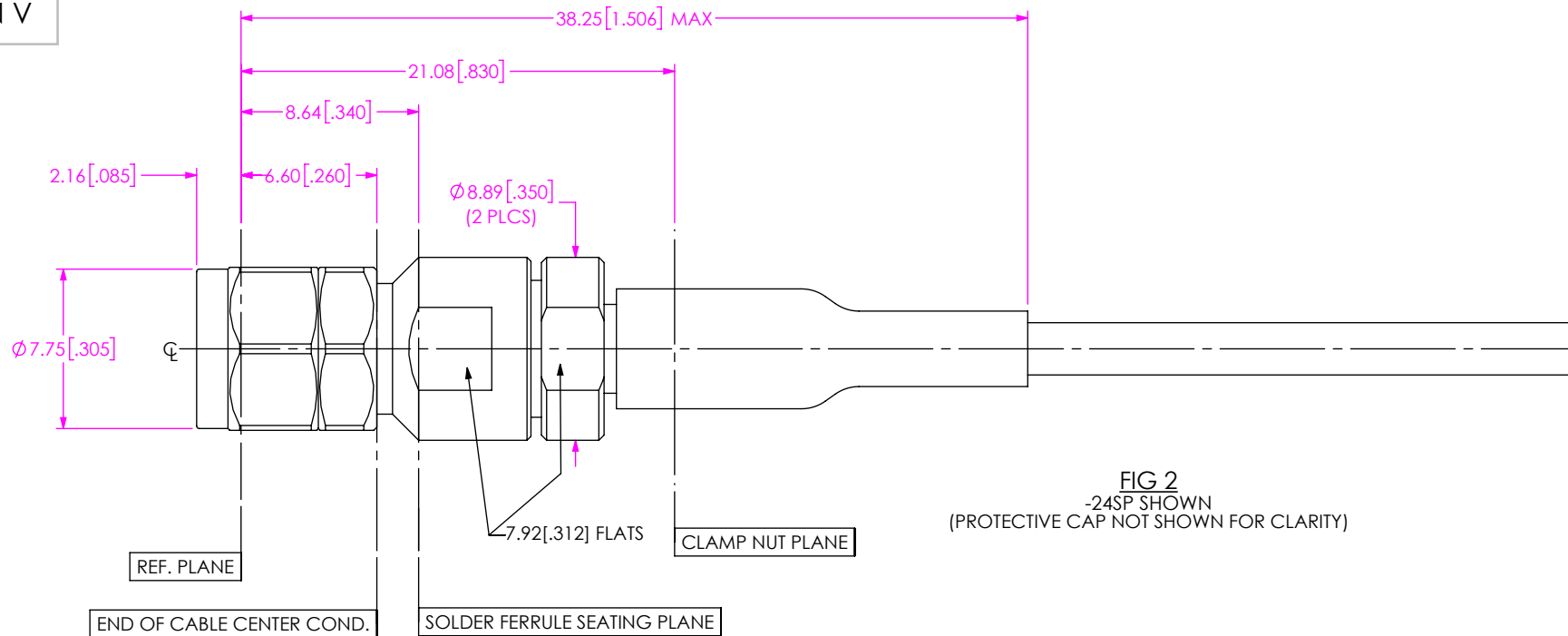
SHEET SCALE: 3:2



520 PARK EAST BLVD., NEW ALBANY, IN 47150
PHONE: 812-944-6733 FAX: 812-948-5047
e-Mail info@SAMTEC.com code 55322

DESCRIPTION:
RF086 CABLE ASSEMBLYDWG. NO.
RF086-XXXX-XXXX-XXXX

BY: SHERRY W 1/15/2019 SHEET 2 OF 10



PROPRIETARY NOTE
THIS DOCUMENT CONTAINS CONFIDENTIAL AND PROPRIETARY INFORMATION AND ALL DESIGN, MANUFACTURING, REPRODUCTION, USE, PATENT RIGHTS AND SALES RIGHTS ARE EXPRESSLY RESERVED BY SAMTEC, INC. THIS DOCUMENT SHALL NOT BE DISCLOSED, IN WHOLE OR PART, TO ANY UNAUTHORIZED PERSON OR ENTITY NOR REPRODUCED, TRANSFERRED OR INCORPORATED IN ANY OTHER PROJECT IN ANY MANNER WITHOUT THE EXPRESS WRITTEN CONSENT OF SAMTEC, INC.

DO NOT SCALE DRAWING

SHEET SCALE: 3:1

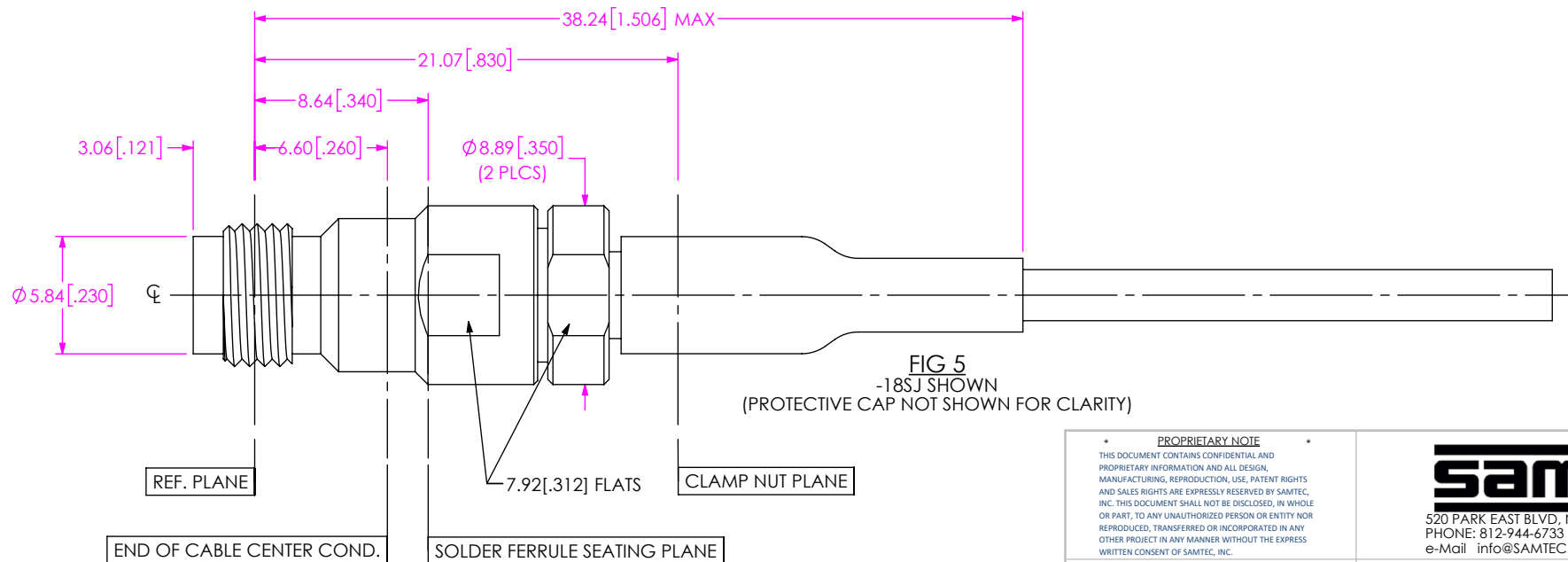
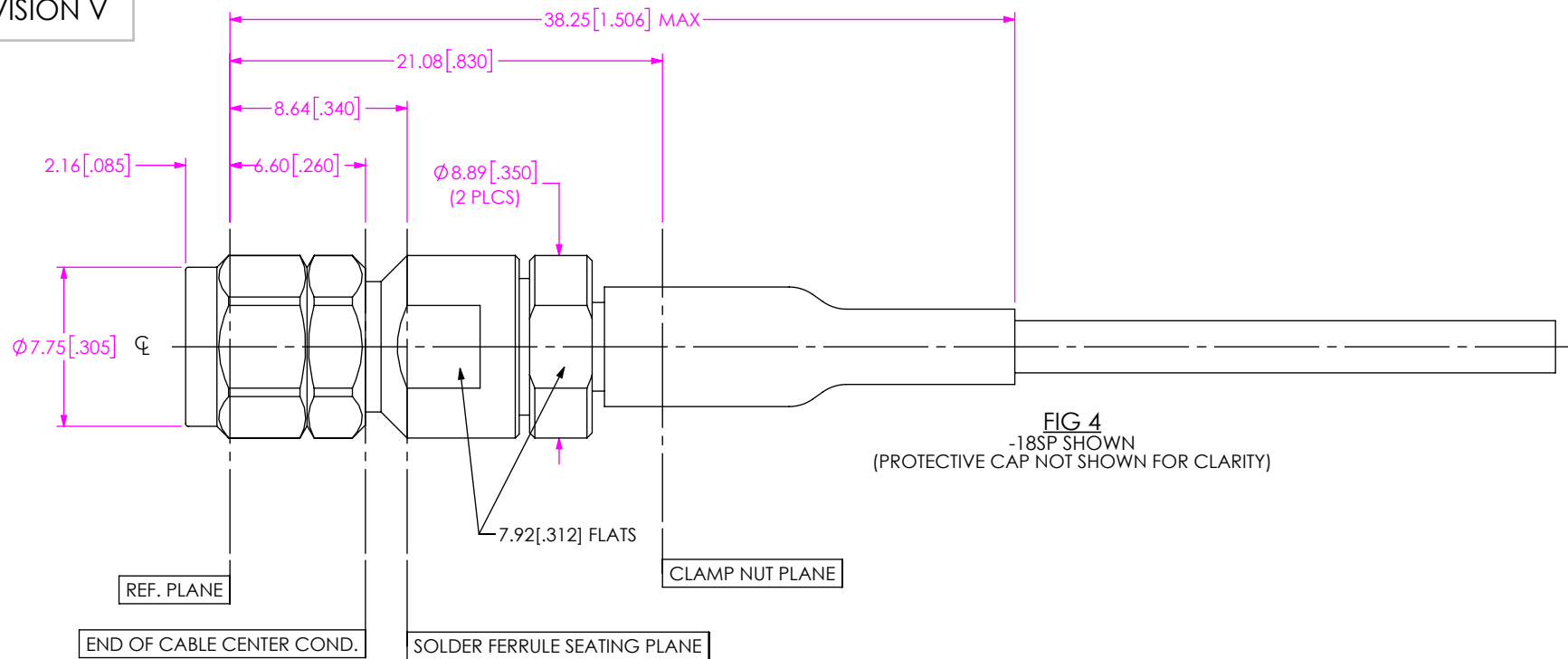
samtec

520 PARK EAST BLVD., NEW ALBANY, IN 47150
PHONE: 812-944-6733 FAX: 812-948-5047
e-Mail: info@SAMTEC.com code 55322

DESCRIPTION: RF086 CABLE ASSEMBLY

DWG. NO. RF086-XXXX-XXXX-XXXX

BY: SHERRY W 1/15/2019 SHEET 3 OF 10



PROPRIETARY NOTE

THIS DOCUMENT CONTAINS CONFIDENTIAL AND PROPRIETARY INFORMATION AND ALL DESIGN, MANUFACTURING, REPRODUCTION, USE, PATENT RIGHTS AND SALES RIGHTS ARE EXPRESSLY RESERVED BY SAMTEC, INC. THIS DOCUMENT SHALL NOT BE DISCLOSED, IN WHOLE OR PART, TO ANY UNAUTHORIZED PERSON OR ENTITY NOR REPRODUCED, TRANSFERRED OR INCORPORATED IN ANY OTHER PROJECT IN ANY MANNER WITHOUT THE EXPRESS WRITTEN CONSENT OF SAMTEC, INC.

DO NOT SCALE DRAWING

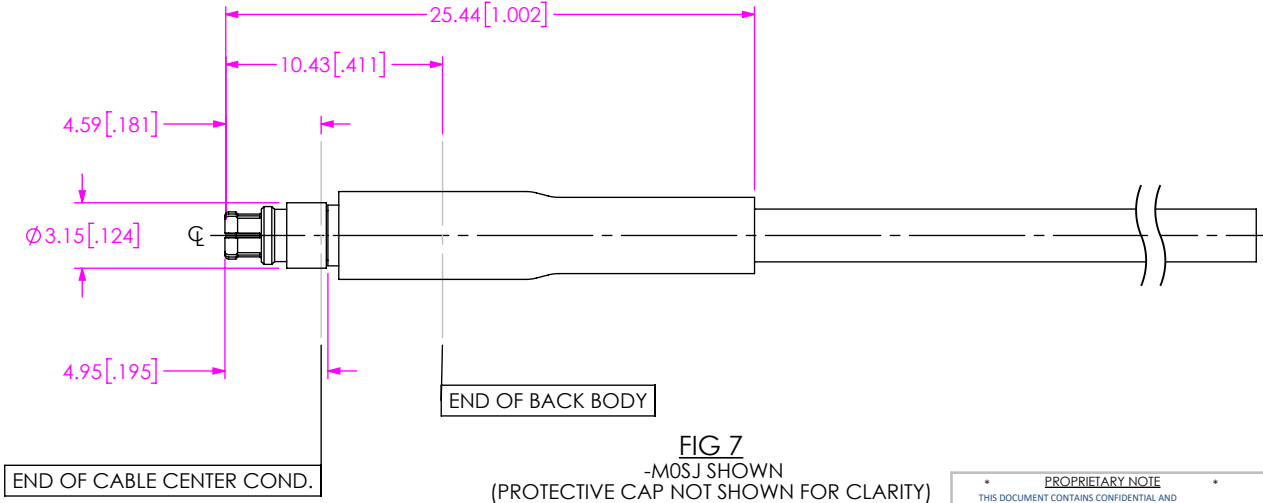
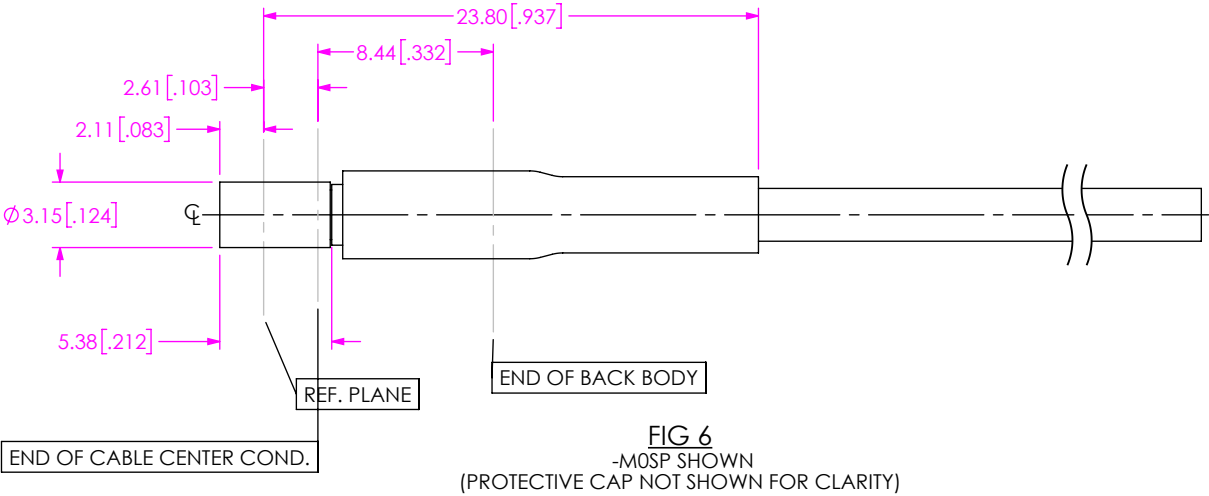
SHEET SCALE: 3:1

samtec
520 PARK EAST BLVD, NEW ALBANY, IN 47150
PHONE: 812-944-6733 FAX: 812-948-5047
e-Mail info@SAMTEC.com code 55322

DESCRIPTION:	RF086 CABLE ASSEMBLY
--------------	----------------------

DWG. NO. RF086-XXXX-XXXX-XXXX

BY: SHERRY W	1/15/2019	SHEET 4 OF 10
--------------	-----------	---------------



PROPRIETARY NOTE
THIS DOCUMENT CONTAINS CONFIDENTIAL AND PROPRIETARY INFORMATION AND ALL DESIGN, MANUFACTURING, REPRODUCTION, USE, PATENT RIGHTS AND SALES RIGHTS ARE EXPRESSLY RESERVED BY SAMTEC, INC. THIS DOCUMENT SHALL NOT BE DISCLOSED, IN WHOLE OR PART, TO ANY UNAUTHORIZED PERSON OR ENTITY NOR REPRODUCED, TRANSFERRED OR INCORPORATED IN ANY OTHER PROJECT IN ANY MANNER WITHOUT THE EXPRESS WRITTEN CONSENT OF SAMTEC, INC.

DO NOT SCALE DRAWING
SHEET SCALE: 3:1

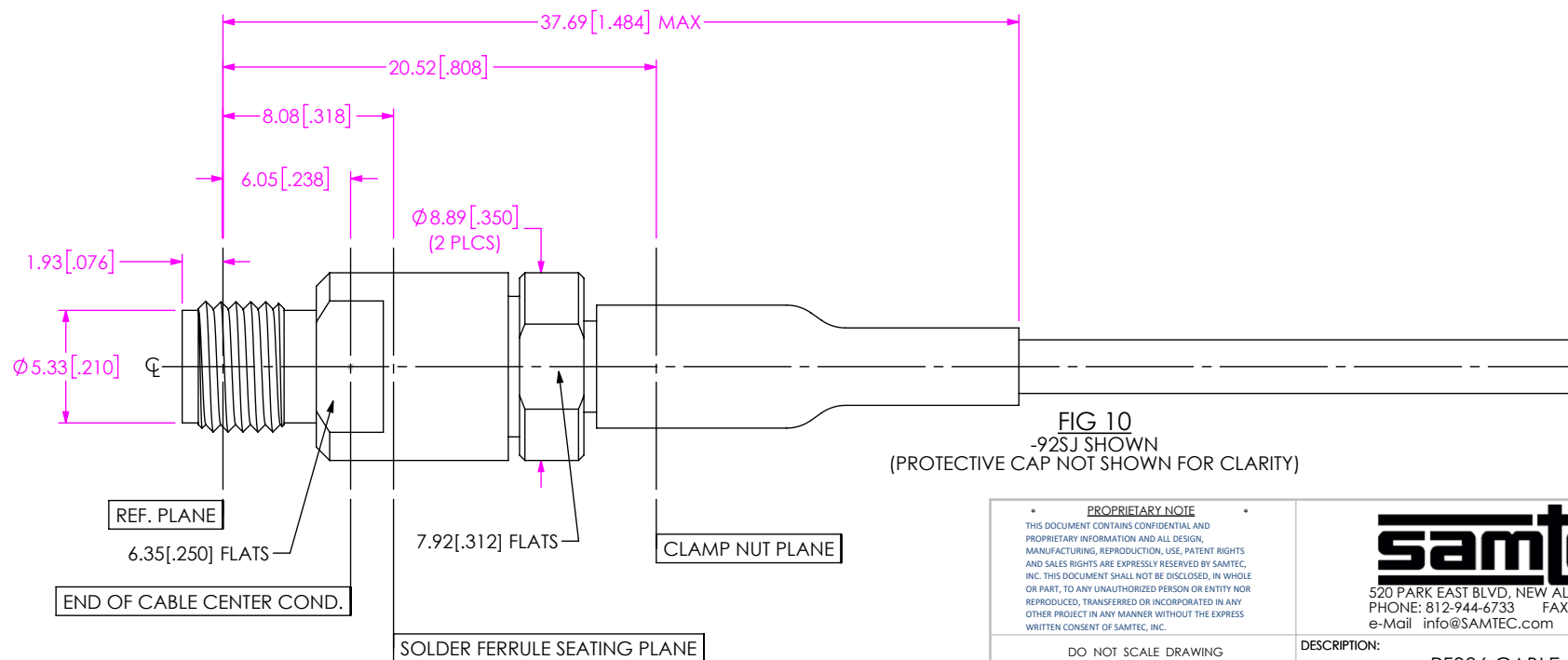
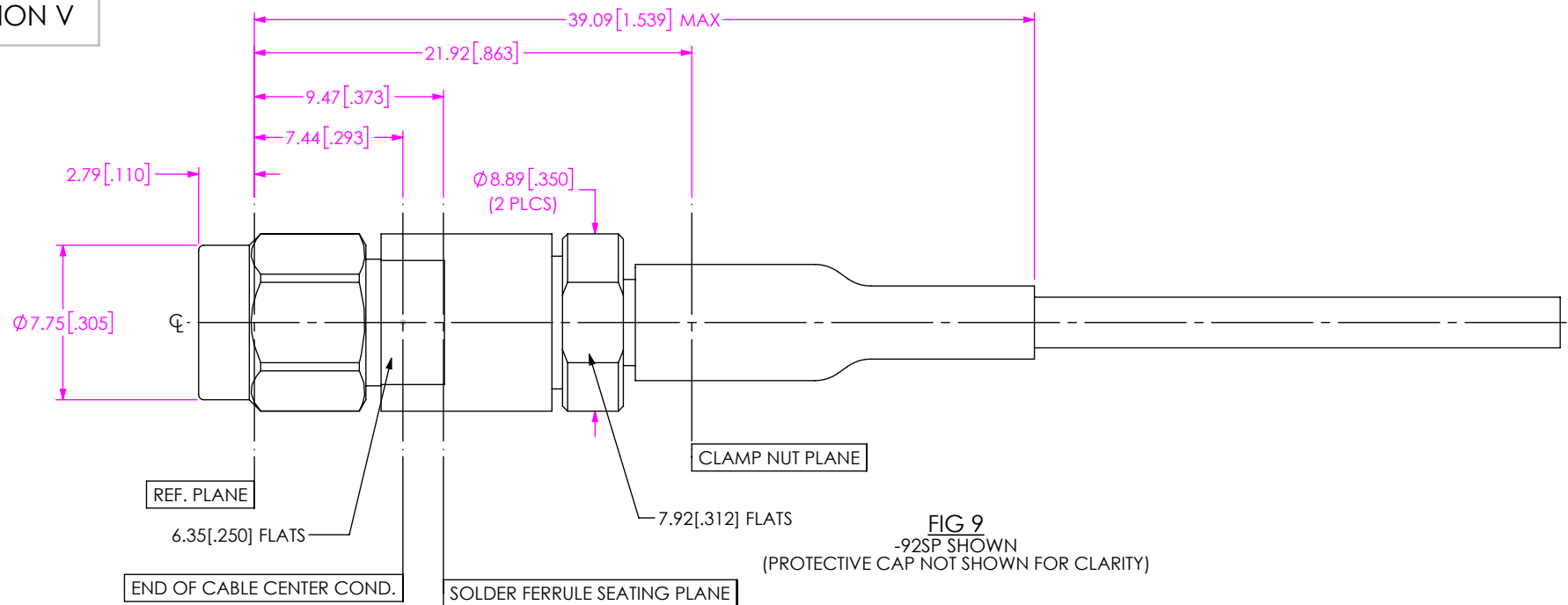
samtec

520 PARK EAST BLVD, NEW ALBANY, IN 47150
PHONE: 812-944-6733 FAX: 812-948-5047
e-Mail info@SAMTEC.com code 55322

DESCRIPTION:
RF086 CABLE ASSEMBLY

DWG. NO.
RF086-XXXX-XXXX-XXXX

BY: SHERRY W 1/15/2019 SHEET 5 OF 10



PROPRIETARY NOTE

THIS DOCUMENT CONTAINS CONFIDENTIAL AND PROPRIETARY INFORMATION AND ALL DESIGN, MANUFACTURING, REPRODUCTION, USE, PATENT RIGHTS AND SALES RIGHTS ARE EXPRESSLY RESERVED BY SAMTEC, INC. THIS DOCUMENT SHALL NOT BE DISCLOSED, IN WHOLE OR PART, TO ANY UNAUTHORIZED PERSON OR ENTITY NOR REPRODUCED, TRANSFERRED OR INCORPORATED IN ANY OTHER PROJECT IN ANY MANNER WITHOUT THE EXPRESS WRITTEN CONSENT OF SAMTEC, INC.

DO NOT SCALE DRAWING

SHEET SCALE: 3:1

santec

520 PARK EAST BLVD, NEW ALBANY, IN 47150
PHONE: 812-944-6733 FAX: 812-948-5047
e-Mail info@SAMTEC.com code 55322

DESCRIPTION:	RF086 CABLE ASSEMBLY
--------------	----------------------

DWG. NO. RF086-XXXX-XXXX-XXXX

BY: SHERRY W	1/15/2019	SHEET 6 OF 10
--------------	-----------	---------------

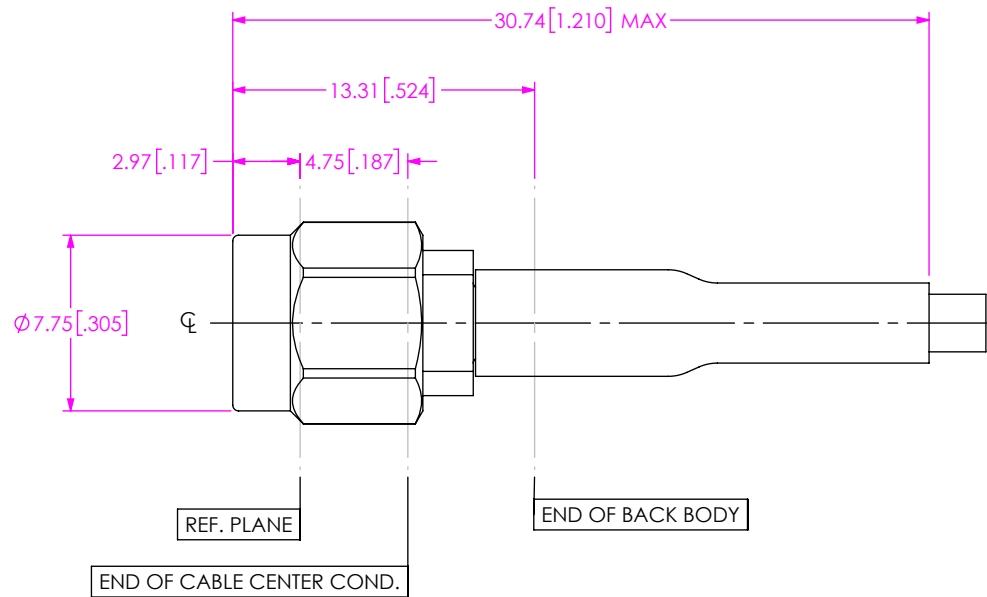


FIG 11
-01SP SHOWN
(PROTECTIVE CAP NOT SHOWN FOR CLARITY)

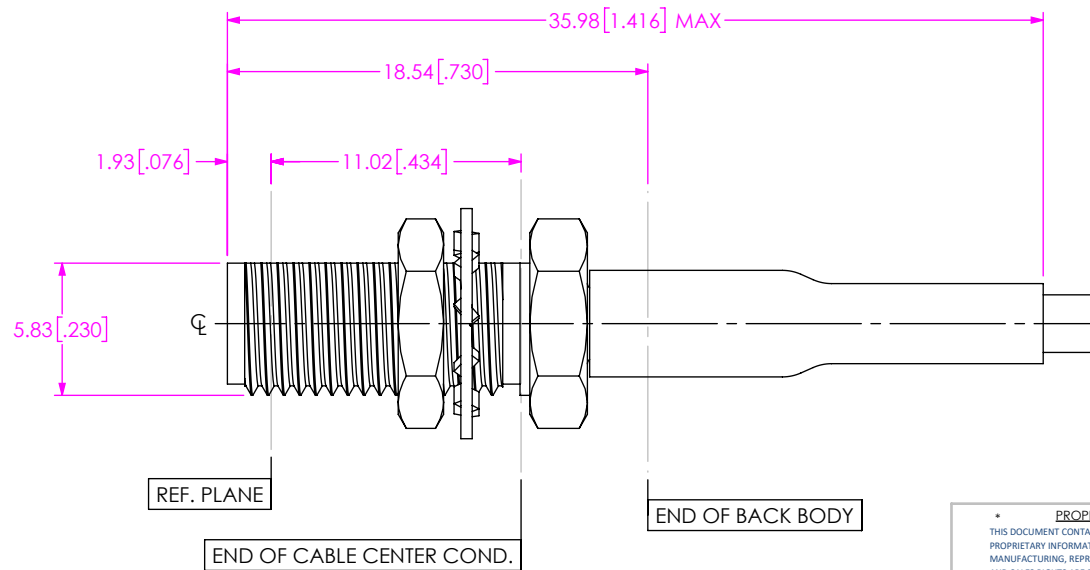
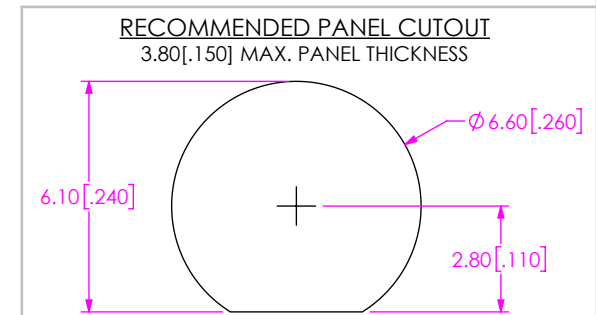


FIG 12
-01BJ SHOWN
(PROTECTIVE CAP NOT SHOWN FOR CLARITY)



PROPRIETARY NOTE
THIS DOCUMENT CONTAINS CONFIDENTIAL AND PROPRIETARY INFORMATION AND ALL DESIGN, MANUFACTURING, REPRODUCTION, USE, PATENT RIGHTS AND SALES RIGHTS ARE EXPRESSLY RESERVED BY SAMTEC, INC. THIS DOCUMENT SHALL NOT BE DISCLOSED, IN WHOLE OR PART, TO ANY UNAUTHORIZED PERSON OR ENTITY NOR REPRODUCED, TRANSFERRED OR INCORPORATED IN ANY OTHER PROJECT IN ANY MANNER WITHOUT THE EXPRESS WRITTEN CONSENT OF SAMTEC, INC.

DO NOT SCALE DRAWING

SHEET SCALE: 3:1

samtec

520 PARK EAST BLVD, NEW ALBANY, IN 47150
PHONE: 812-944-6733 FAX: 812-948-5047
e-Mail info@SAMTEC.com code 55322

DESCRIPTION:
RF086 CABLE ASSEMBLY

DWG. NO.
RF086-XXXX-XXXX-XXXX

BY: SHERRY W 1/15/2019 SHEET 7 OF 10

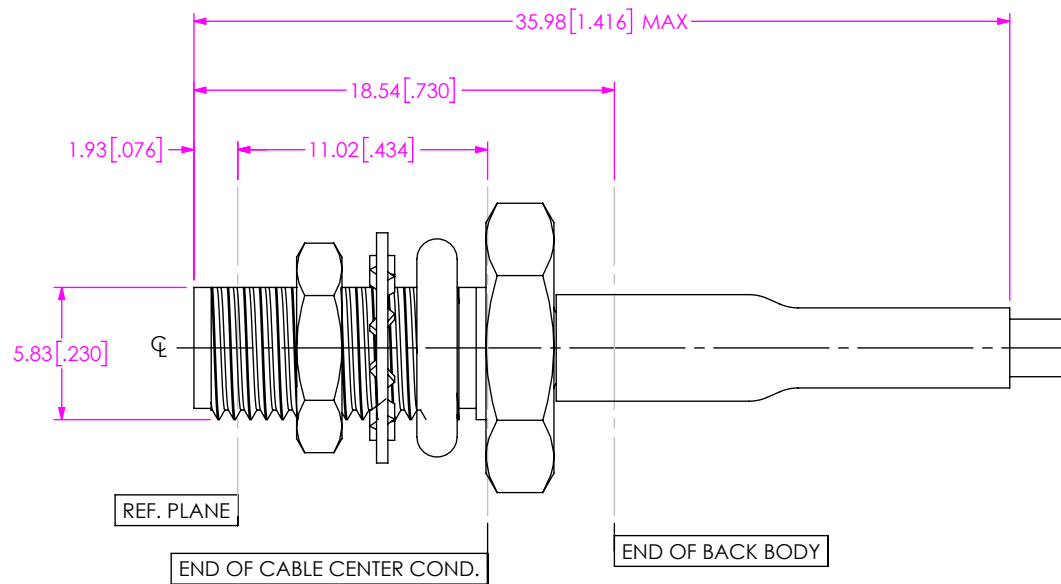


FIG 13
-01SB SHOWN
(PROTECTIVE CAP NOT SHOWN FOR CLARITY)

RECOMMENDED PANEL CUTOUT
3.80 [.150] MAX. PANEL THICKNESS

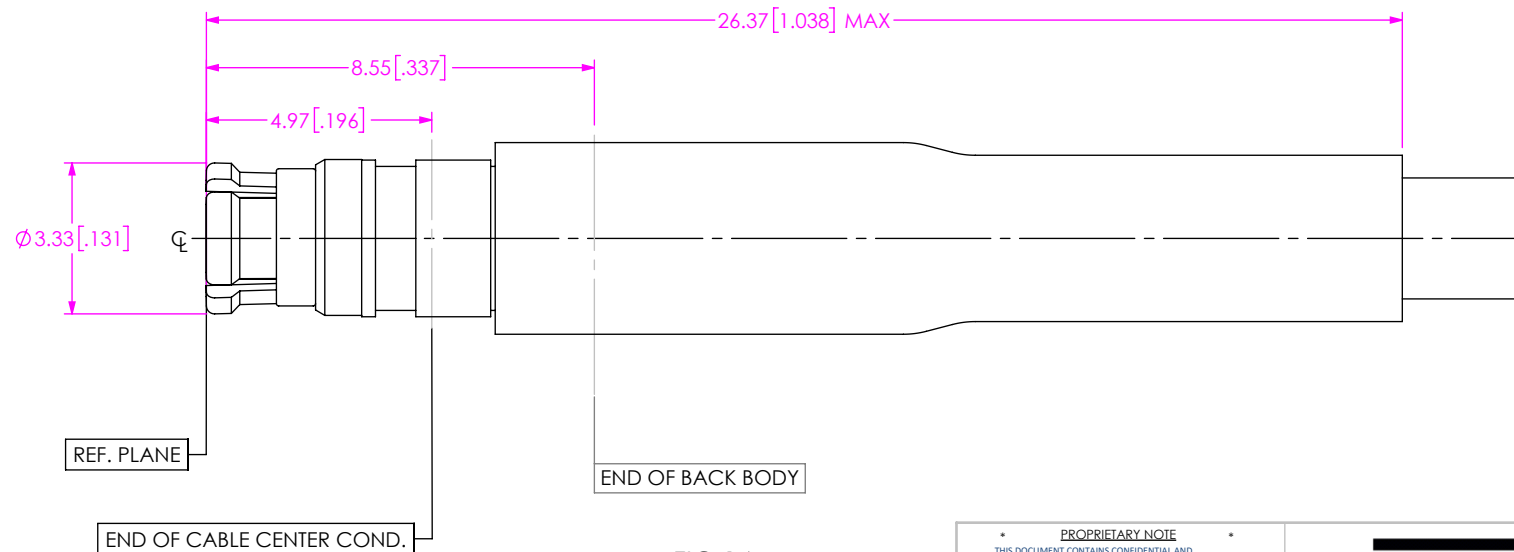
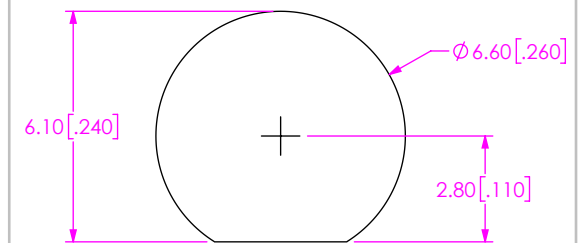


FIG 14
-00SJ SHOWN
(PROTECTIVE CAP NOT SHOWN FOR CLARITY)

PROPRIETARY NOTE
THIS DOCUMENT CONTAINS CONFIDENTIAL AND PROPRIETARY INFORMATION AND ALL DESIGN, MANUFACTURING, REPRODUCTION, USE, PATENT RIGHTS AND SALES RIGHTS ARE EXPRESSLY RESERVED BY SAMTEC, INC. THIS DOCUMENT SHALL NOT BE DISCLOSED, IN WHOLE OR PART, TO ANY UNAUTHORIZED PERSON OR ENTITY NOR REPRODUCED, TRANSFERRED OR INCORPORATED IN ANY OTHER PROJECT IN ANY MANNER WITHOUT THE EXPRESS WRITTEN CONSENT OF SAMTEC, INC.

DO NOT SCALE DRAWING

SHEET SCALE: 3:1

samtec

520 PARK EAST BLVD, NEW ALBANY, IN 47150
PHONE: 812-944-6733 FAX: 812-948-5047
e-Mail info@SAMTEC.com code 55322

DESCRIPTION:

RF086 CABLE ASSEMBLY

DWG. NO.

RF086-XXXX-XXXX-XXXX

BY: SHERRY W

1/15/2019

SHEET 8 OF 10

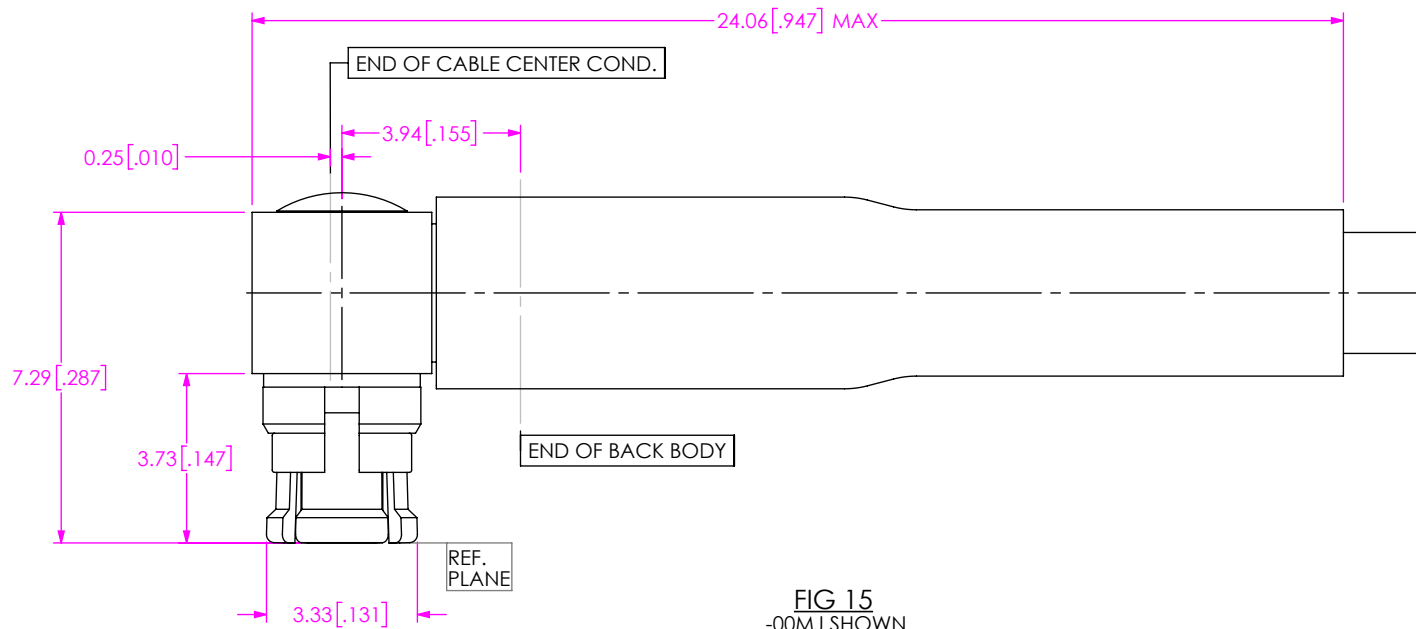


FIG 15
-00MJ SHOWN
(PROTECTIVE CAP NOT SHOWN FOR CLARITY)

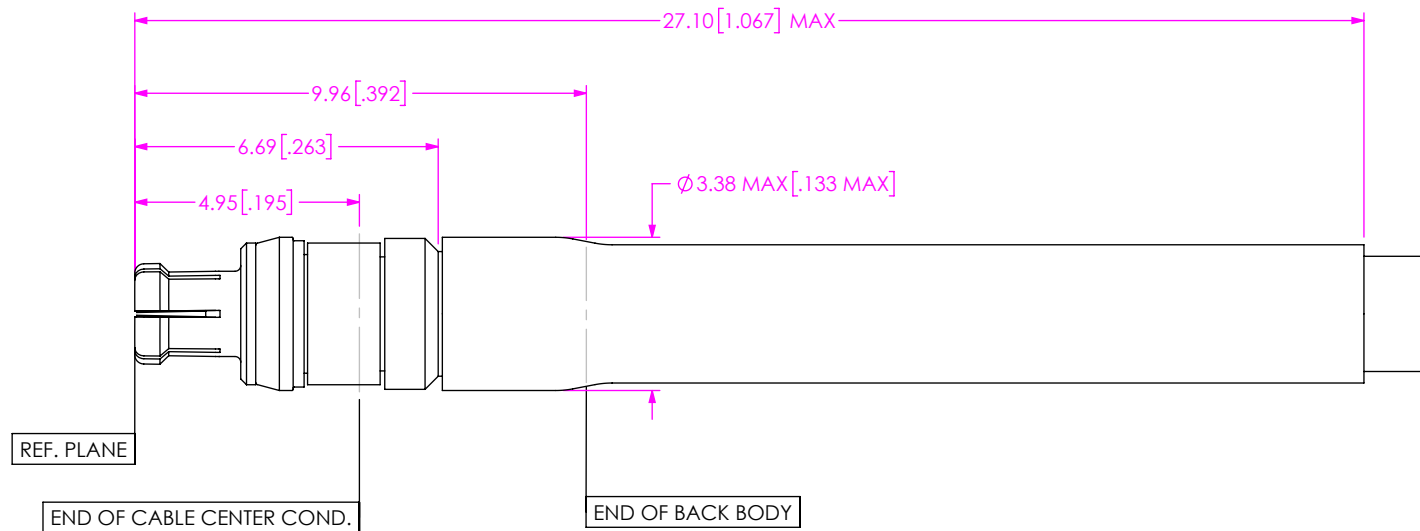


FIG 16
-GC86 SHOWN
(COMPATIBLE WITH GC86 GANGED ASSEMBLY)

PROPRIETARY NOTE
THIS DOCUMENT CONTAINS CONFIDENTIAL AND PROPRIETARY INFORMATION AND ALL DESIGN, MANUFACTURING, REPRODUCTION, USE, PATENT RIGHTS AND SALES RIGHTS ARE EXPRESSLY RESERVED BY SAMTEC, INC. THIS DOCUMENT SHALL NOT BE DISCLOSED, IN WHOLE OR PART, TO ANY UNAUTHORIZED PERSON OR ENTITY NOR REPRODUCED, TRANSFERRED OR INCORPORATED IN ANY OTHER PROJECT IN ANY MANNER WITHOUT THE EXPRESS WRITTEN CONSENT OF SAMTEC, INC.

DO NOT SCALE DRAWING

SHEET SCALE: 3:1

samtec

520 PARK EAST BLVD, NEW ALBANY, IN 47150
PHONE: 812-944-6733 FAX: 812-948-5047
e-Mail info@SAMTEC.com code 55322

DESCRIPTION:
RF086 CABLE ASSEMBLY

DWG. NO.
RF086-XXXX-XXXX-XXXX

BY: SHERRY W 1/15/2019 SHEET 9 OF 10

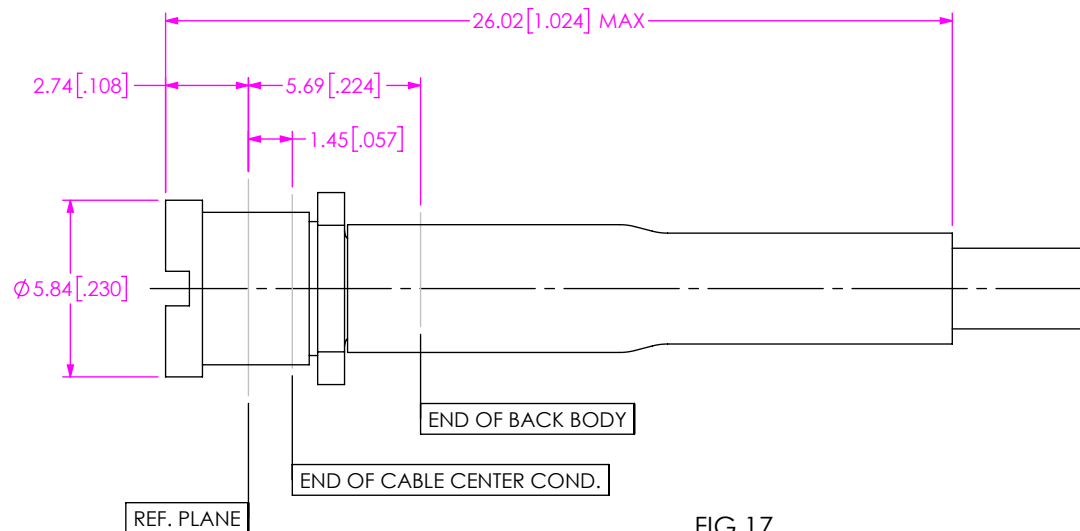
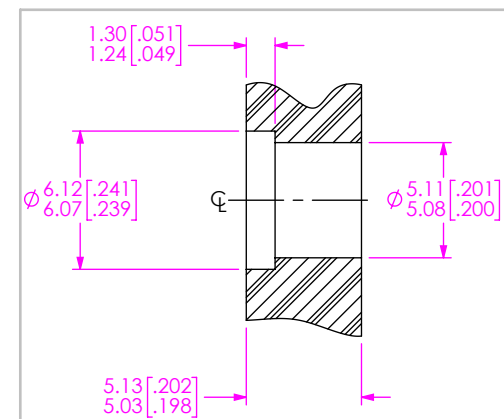


FIG 17
-00BC, -00BF, -00BL, -00BS SHOWN
(PROTECTIVE CAP NOT SHOWN FOR CLARITY)



RECOMMENDED PANEL LAYOUT

PROPRIETARY NOTE
THIS DOCUMENT CONTAINS CONFIDENTIAL AND PROPRIETARY INFORMATION AND ALL DESIGN, MANUFACTURING, REPRODUCTION, USE, PATENT RIGHTS AND SALES RIGHTS ARE EXPRESSLY RESERVED BY SAMTEC, INC. THIS DOCUMENT SHALL NOT BE DISCLOSED, IN WHOLE OR PART, TO ANY UNAUTHORIZED PERSON OR ENTITY NOR REPRODUCED, TRANSFERRED OR INCORPORATED IN ANY OTHER PROJECT IN ANY MANNER WITHOUT THE EXPRESS WRITTEN CONSENT OF SAMTEC, INC.

DO NOT SCALE DRAWING

SHEET SCALE: 3:1

samtec

520 PARK EAST BLVD, NEW ALBANY, IN 47150
PHONE: 812-944-6733 FAX: 812-948-5047
e-Mail: info@SAMTEC.com code 55322

DESCRIPTION:
RF086 CABLE ASSEMBLY

DWG. NO.
RF086-XXXX-XXXX-XXXX