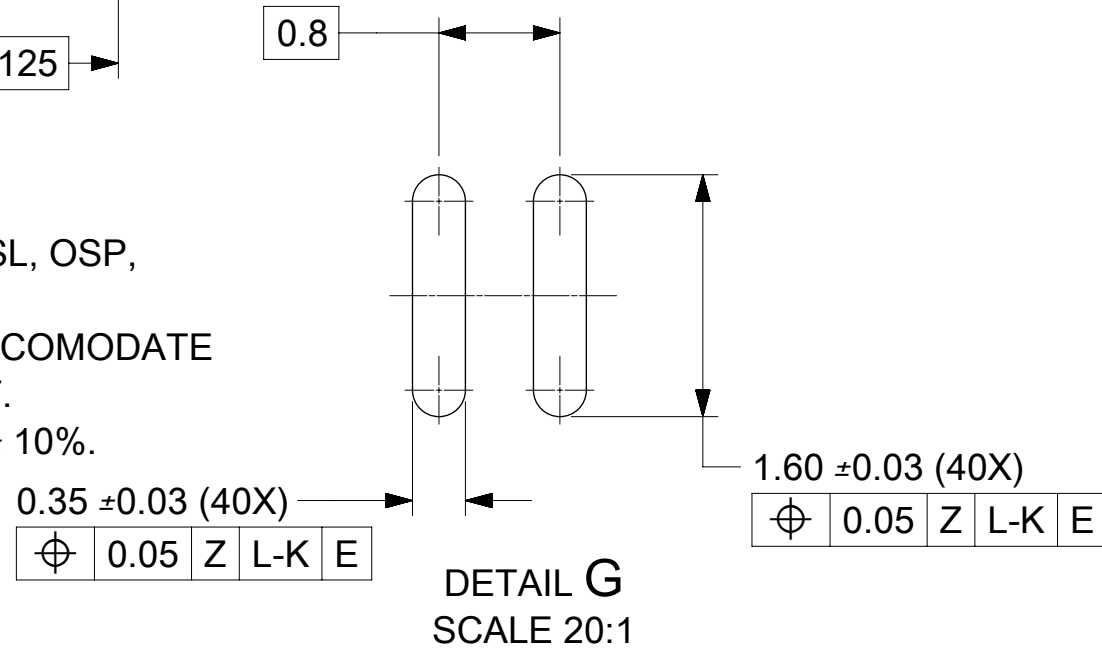


[illegible]

1. PADS AND VIAS CONNECT TO CHASSIS GROUND.
2. RECOMMENDED THRU HOLE PLATING INCLUDES HASL, OSP, OR IMMERSION (GOLD, SILVER, OR TIN).
3. CONNECTOR PAD LAYOUT PER SFP-DD MSA WILL ACCOMMODATE MOLEX CONNECTOR SERIES 204730 OR EQUIVALENT.
4. PCB THICKNESS FOR SINGLE SIDED USE IS 1.57 mm \pm 10%.



$\varnothing 3.00$ (2X)
 SOLDER PADS
 RETENTION ARE
 D FOR USE WITH
 LOW PROCESS

$\varnothing 1.55 \pm 0.05$
 HOLE FOR
 HOUSING
 LOCATOR
 PEG


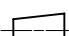
$\varnothing 0.05$ Z L
 K

9.6
 10.65
 2.93
 2.93
 2.93
 2.00 (2X)
 2.70
 12.25

2.00
 L
 $\varnothing 1.55 \pm 0.05$
 HOLE FOR
 HOUSING
 LOCATOR
 PEG

CENTERLINE
 OF L-K
 0.2
 PIN 10
 PIN 30
 PIN 31
 PIN 11
 PIN 1
 PIN 21
 PIN 40
 PIN 20
 0.2
 \varnothing OF L-K
 1.00 TYP
 22.00 TYP
 31.60 TYP

DETAIL F
SCALE 7:1


SYMBOLS		THIS DRAWING CONTAINS INFORMATION THAT IS PROPRIETARY TO MOLEX ELECTRONIC TECHNOLOGIES, LLC AND SHOULD NOT BE USED WITHOUT WRITTEN PERMISSION															
DIMENSION UNITS		SCALE		CURRENT REV DESC:				<div>molex</div>									
mm		5:1															
GENERAL TOLERANCES (UNLESS SPECIFIED)		EC NO: 632267 DRWN: SSU09 2020/02/13 CHK'D: JKACHLIC 2020/02/19 APPR: JKACHLIC 2020/02/19						SFP-DD SMT CONNECTOR SALES DRAWING 40 CKT									
ANGULAR TOL ± °																	
4 PLACES ±		INITIAL REVISION: DRWN: RMIKLINSKI 2019/03/22 APPR: RNELSON 2019/05/31				DOCUMENT NUMBER 2047301000		DOC TYPE PSD		DOC PART 000		REVISION A2					
3 PLACES ±																	
2 PLACES ± 0.13																	
1 PLACE ± 0.25		DRAFT WHERE APPLICABLE MUST REMAIN WITHIN DIMENSIONS				THIRD ANGLE PROJECTION		DRAWING C-SIZE		SERIES 204730		MATERIAL NUMBER 2047301000		CUSTOMER GENERAL MARKET		SHEET NUMBER 2 OF 7	
0 PLACES ±																	
<div>□ = 0</div> <div>■ = 0</div> <div>◻ = 0</div>		<div></div> <div></div>															

SEE THE CAGE DRAWINGS FOR LAYOUT VARIATIONS

£ OF L-K


1.00 TYP

$\varnothing 1.05 \pm 0.05$ —
(SHOWN AS \varnothing)

	$\varnothing 0.10 \text{ (M)}$	Z	L-K
---	--------------------------------	---	-----

E

CROSS HATCHED AREA
GOES TO CHASSIS
GROUND (NO OSP)

15X $\varnothing 0.95 \pm 0.05$
(SHOWN AS )

	$\phi 0.10 \text{ (M)}$	Z	L-K	E
---	-------------------------	---	-----	---

12X 3.00

4X 2.00

DATUM Z

2X 5.00

THIS AREA DENOTES —
COMPONENT KEEP-OUT
(TRACES ALLOWED)

11X $\varnothing 1.05 \pm 0.05$
(SHOWN AS \varnothing)

\oplus	$\varnothing 0.10 \text{ (M)}$	Z	L-K	E
----------	--------------------------------	---	-----	---

5.00 TYP

0.00 TYP

5.00 TYP

10.00 TYP

— 12.10

15.00 TYP

17.30
17.00 TVD

20.00	TYP
-------	-----

22.50 TYP

25 90 TYP

30.00 TYP

33.00 TYP

40.00 TYP

43.00 TYP

48 20 TVP

2.325

SCALE 5:1

SEE SHEET 2 FOR HOST
CONNECTOR PCB LAYOUT

NOTES:

1. PADS AND VIAS CONNECT TO CHASSIS GROUND.
2. RECOMMENDED THRU HOLE PLATING INCLUDES HASL, OSP, OR IMMERSION (GOLD, SILVER, OR TIN).
3. CONNECTOR PAD LAYOUT PER SFP-DD MSA WILL ACCOMMODATE MOLEX CONNECTOR SERIES 204730 OR EQUIVALENT.
4. MIN PCB THICKNESS FOR BELLY TO BELLY USE IS 2.55 MM.
5. THIS SHEET IS BASED ON SHEET 4 OF CAGE PRODUCT CUSTOMER DRAWING 2048236206 REVISION D1. PLEASE SEE THAT DRAWING FOR ANY UPDATES.

SYMBOLS		THIS DRAWING CONTAINS INFORMATION THAT IS PROPRIETARY TO MOLEX ELECTRONIC TECHNOLOGIES, LLC AND SHOULD NOT BE USED WITHOUT WRITTEN PERMISSION											
DIMENSION UNITS		SCALE		CURRENT REV DESC:				<div>molex</div>					
mm		1:1											
GENERAL TOLERANCES (UNLESS SPECIFIED)		EC NO: 632267 DRWN: SSU09 2020/02/13 CHK'D: JKACHLIC 2020/02/19 APPR: JKACHLIC 2020/02/19				SFP-DD SMT CONNECTOR SALES DRAWING 40 CKT							
ANGULAR TOL ± °													
4 PLACES ±		INITIAL REVISION:				PRODUCT CUSTOMER DRAWING							
3 PLACES ±													
2 PLACES ± 0.13		DRWN: RMIKLINSKI 2019/03/22 APPR: RNELSON 2019/05/31				DOCUMENT NUMBER 2047301000		DOC TYPE PSD		DOC PART 000		REVISION A2	
1 PLACE ± 0.25													
0 PLACES ±		THIRD ANGLE PROJECTION		DRAWING C-SIZE		SERIES 204730		MATERIAL NUMBER 2047301000		CUSTOMER GENERAL MARKET		SHEET NUMBER 3 OF 7	
DRAFT WHERE APPLICABLE MUST REMAIN WITHIN DIMENSIONS													

KEEP OUT AREA FOR INSERTION/EXTRACTION TOOL SHOWN FOR REFERENCE ONLY

SEE THE CAGE DRAWINGS FOR LAYOUT VARIATIONS

0.50 MIN 0.50 MIN

RECOMMENDED
INSERTION/EXTRACTION
TOOL KEEP OUT AREAS.
NO COMPONENTS
IN THESE AREAS.

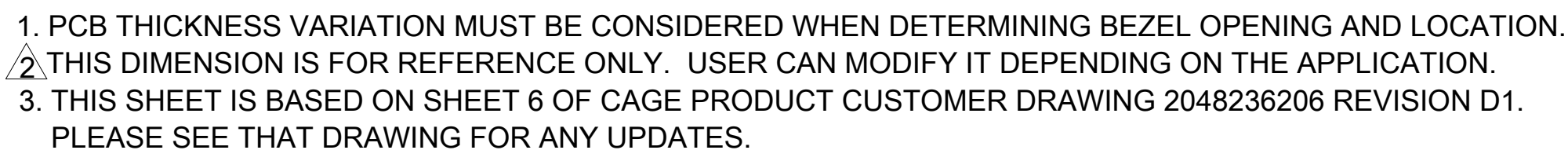
SCALE 5:1

THIS SHEET IS BASED ON SHEET 5 OF CAGE PRODUCT CUSTOMER DRAWING 2048236206 REVISION D1.
PLEASE SEE THAT DRAWING FOR ANY UPDATES.

SYMBOLS		THIS DRAWING CONTAINS INFORMATION THAT IS PROPRIETARY TO MOLEX ELECTRONIC TECHNOLOGIES, LLC AND SHOULD NOT BE USED WITHOUT WRITTEN PERMISSION																											
<div><div></div> = 0</div> <div><div></div> = 0</div> <div><div></div> = 0</div> <div><div></div> = 0</div> <div><div></div> = 0</div> <div><div></div> = 0</div> <div><div></div> = 0</div> <div><div></div> = 0</div> <div><div></div> = 0</div> <div><div></div> = 0</div>		DIMENSION UNITS		SCALE		CURRENT REV DESC:														<div>molex</div> <div>SFP-DD SMT CONNECTOR SALES DRAWING 40 CKT</div>									
		mm		1:1																									
<div><div></div> = 0</div> <div><div></div> = 0</div> <div><div></div> = 0</div> <div><div></div> = 0</div> <div><div></div> = 0</div> <div><div></div> = 0</div> <div><div></div> = 0</div> <div><div></div> = 0</div> <div><div></div> = 0</div> <div><div></div> = 0</div>		GENERAL TOLERANCES (UNLESS SPECIFIED)				EC NO: 632267 DRWN: SSU09 2020/02/13 CHK'D: JKACHLIC 2020/02/19 APPR: JKACHLIC 2020/02/19														PRODUCT CUSTOMER DRAWING									
		ANGULAR TOL ± °																											
<div><div></div> = 0</div> <div><div></div> = 0</div> <div><div></div> = 0</div> <div><div></div> = 0</div> <div><div></div> = 0</div> <div><div></div> = 0</div> <div><div></div> = 0</div> <div><div></div> = 0</div> <div><div></div> = 0</div> <div><div></div> = 0</div>		4 PLACES		±		INITIAL REVISION:														DOCUMENT NUMBER				DOC TYPE		DOC PART		REVISION	
		3 PLACES		±																2047301000				PSD		000		A2	
<div><div></div> = 0</div> <div><div></div> = 0</div> <div><div></div> = 0</div> <div><div></div> = 0</div> <div><div></div> = 0</div> <div><div></div> = 0</div> <div><div></div> = 0</div> <div><div></div> = 0</div> <div><div></div> = 0</div> <div><div></div> = 0</div>		2 PLACES		± 0.13		2019/03/22 2019/05/31														MATERIAL NUMBER 2047301000				CUSTOMER GENERAL MARKET				SHEET NUMBER 4 OF 7	
		1 PLACE		± 0.25																									
<div><div></div> = 0</div> <div><div></div> = 0</div> <div><div></div> = 0</div> <div><div></div> = 0</div> <div><div></div> = 0</div> <div><div></div> = 0</div> <div><div></div> = 0</div> <div><div></div> = 0</div> <div><div></div> = 0</div> <div><div></div> = 0</div>		0 PLACES		±		THIRD ANGLE PROJECTION				DRAWING				SERIES				C-SIZE 204730											
		DRAFT WHERE APPLICABLE MUST REMAIN WITHIN DIMENSIONS		<div><div></div><div></div></div>								204730																	

DOCUMENT STATUS	P1	RELEASE DATE	2020/02/19	03:41:55
-----------------	----	--------------	------------	----------

SEE THE CAGE DRAWINGS FOR LAYOUT VARIATIONS

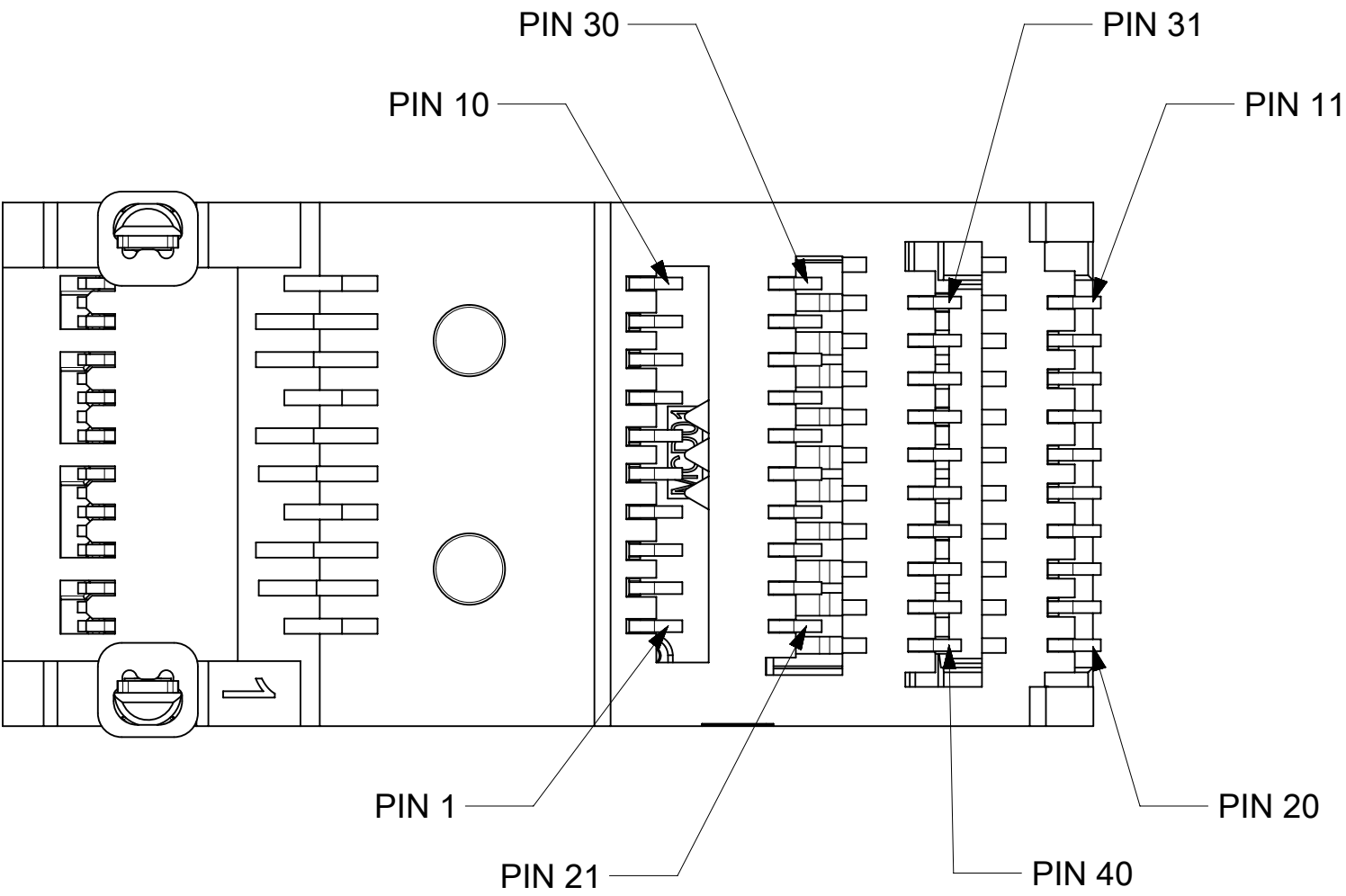


FORMAT: master-ib-prod-C	12	11	10
REVISION: H			
DATE: 11/11/2011			

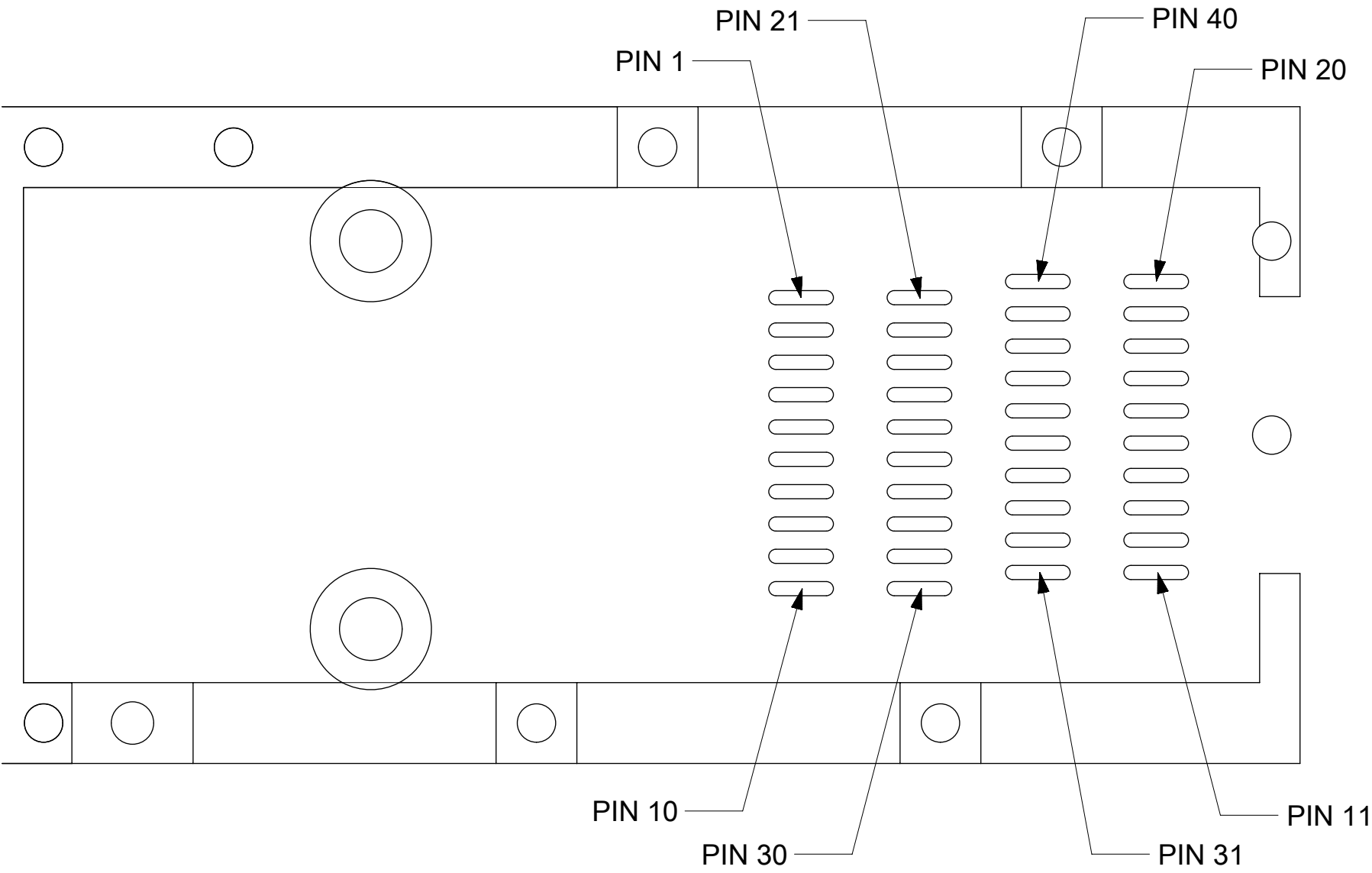
PINOUT TABLE

Pin #	Symbol	Description	Notes
1	GND	Ground	
2	Tx Fault	Module Fault Indication	Legacy Low Speed
3	TxDisable0	Transmitter Disable for channel 0	Legacy Low Speed
4	SDA	Management I/F data line	
5	SCL	Management I/F clock	
6	Mod_ABS	Module Absent	
7	Speed0-1	Rx Rate Select for channel 0	Legacy Low Speed
8	RxLOS0	Rx Loss of Signal for channel 0	Legacy Low Speed
9	Speed0-2	Tx Rate Select for channel 0	Legacy Low Speed
10	GND	Ground	
11	GND	Ground	
12	RD0-	Inverse Received Data Out for channel 0	Legacy Rx-
13	RD0+	Received Data Out for channel 0	Legacy Rx+
14	GND	Ground	
15	VccR0	Receiver Power	Legacy Power
16	VccT0	Transmitter Power	Legacy Power
17	GND	Ground	
18	TD0+	Transmit Data In for channel 0	Legacy Tx+
19	TD0-	Inverse Transmit Data In for channel 0	Legacy Tx-
20	GND	Ground	
21	GND	Ground	
22	IntL	Interrupt	DD SFP Channel
23	TxDisable1	Transmitter Disable for channel 1	DD SFP Channel
24	ePPS	Precision Time Protocol (PTP) reference clock input	
25	LPMode	Low Power Mode Control	
26	ResetL	Module Reset	
27	Speed1-1	Rx Rate Select for channel 1	DD SFP Channel
28	RxLOS1	Loss of Signal for channel 1	DD SFP Channel
29	Speed1-2	Tx Rate Select for channel 1	DD SFP Channel
30	GND	Ground	
31	GND	Ground	
32	RD1-	Inverse Received Data Out for channel 1	DD SFP Channel Rx-
33	RD1+	Received Data Out for channel 1	DD SFP Channel Rx+
34	GND	Ground	
35	VccR1	Receiver Power for channel 1	DD SFP Power
36	VccT1	Transmitter Power for channel 1	DD SFP Power
37	GND	Ground	
38	TD1+	Transmit Data In for channel 1	DD SFP Channel Tx+
39	TD1-	Inverse Transmit Data In for channel 1	DD SFP Channel Tx-
40	GND	Ground	

NOTES:
FOR REFERENCE ONLY
PLEASE USE THE LATEST RELEASE SFP-DD MSA FOR PIN MAPPING



BOTTOM VIEW OF CONNECTOR



TOP VIEW OF PCB

SYMBOLS	THIS DRAWING CONTAINS INFORMATION THAT IS PROPRIETARY TO MOLEX ELECTRONIC TECHNOLOGIES, LLC AND SHOULD NOT BE USED WITHOUT WRITTEN PERMISSION																	
<div><div><div><div></div></div></div><div>= 0</div></div> <div><div><div><div></div></div></div><div>= 0</div></div> <div><div><div><div></div></div></div><div>= 0</div></div> <div><div><div><div></div></div></div><div>= 0</div></div> <div><div><div><div></div></div></div><div>= 0</div></div> <div><div><div><div></div></div></div><div>= 0</div></div> <div><div><div><div></div></div></div><div>= 0</div></div> <div><div><div><div></div></div></div><div>= 0</div></div> <div><div><div><div></div></div></div><div>= 0</div></div> <div><div><div><div></div></div></div><div>= 0</div></div>	DIMENSION UNITS		SCALE		CURRENT REV DESC:				<div>molex</div> <div>SFP-DD SMT CONNECTOR SALES DRAWING 40 CKT</div>									
	mm		5:1															
	GENERAL TOLERANCES (UNLESS SPECIFIED)				EC NO: 632267 DRWN: SSU09 2020/02/13 CHK'D: JKACHLIC 2020/02/19 APPR: JKACHLIC 2020/02/19				PRODUCT CUSTOMER DRAWING									
	ANGULAR TOL ± °																	
	4 PLACES		±		INITIAL REVISION: DRWN: RMIKLINSKI 2019/03/22 APPR: RNELSON 2019/05/31				DOCUMENT NUMBER		DOC TYPE	DOC PART	REVISION					
	3 PLACES		±						2047301000		PSD	000	A2					
	2 PLACES		± 0.13		DRAFT WHERE APPLICABLE MUST REMAIN WITHIN DIMENSIONS				THIRD ANGLE PROJECTION		DRAWING	SERIES	MATERIAL NUMBER		CUSTOMER		SHEET NUMBER	
	1 PLACE		± 0.25															
	0 PLACES		±				C-SIZE	204730	2047301000		GENERAL MARKET		6 OF 7					

