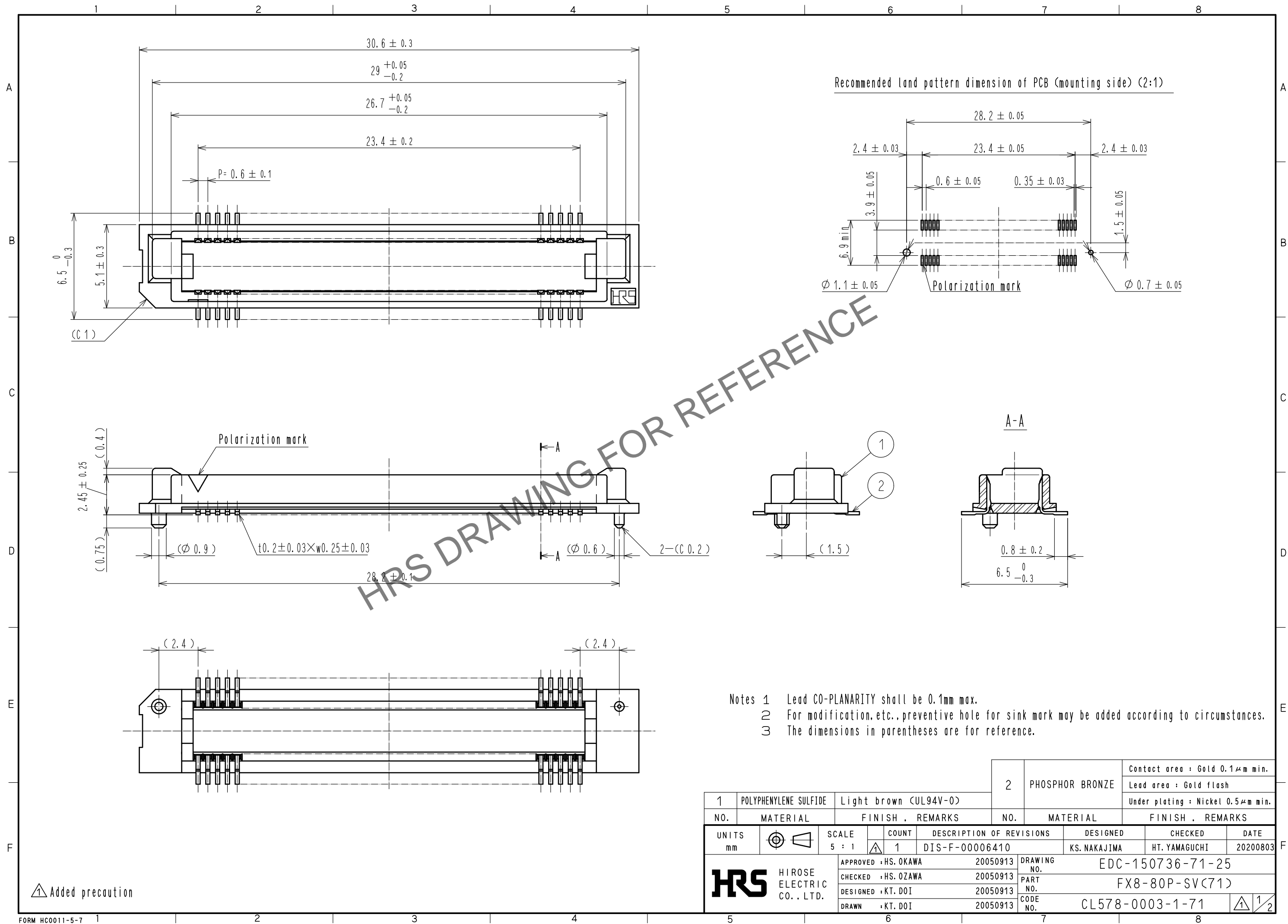


Jul.1.2024 Copyright 2024 HIROSE ELECTRIC CO., LTD. All Rights Reserved.
In case of consideration for using Automotive equipment / device which demand high reliability, kindly contact our sales window correspondents.



Added precaution

FORM HC0011-5-7

1		POLYPHENYLENE SULFIDE	Light brown (UL94V-0)	2	PHOSPHOR BRONZE	Contact area : Gold 0.1μm min.
NO.		MATERIAL	FINISH . REMARKS	NO.		Lead area : Gold flash
						Under plating : Nickel 0.5μm min.
UNITS		SCALE	COUNT	DESCRIPTION OF REVISIONS		DESIGNED
mm		5 : 1	1	DIS-F-00006410		KS. NAKAJIMA
						CHECKED
						HT. YAMAGUCHI
						DATE
						20200803
HRS		HIROSE ELECTRIC CO., LTD.	APPROVED : HS. OKAWA	20050913	DRAWING NO.	EDC-150736-71-25
			CHECKED : HS. OZAWA	20050913	PART NO.	FX8-80P-SV(71)
			DESIGNED : KT. DOI	20050913	CODE NO.	CL578-0003-1-71
			DRAWN : KT. DOI	20050913		

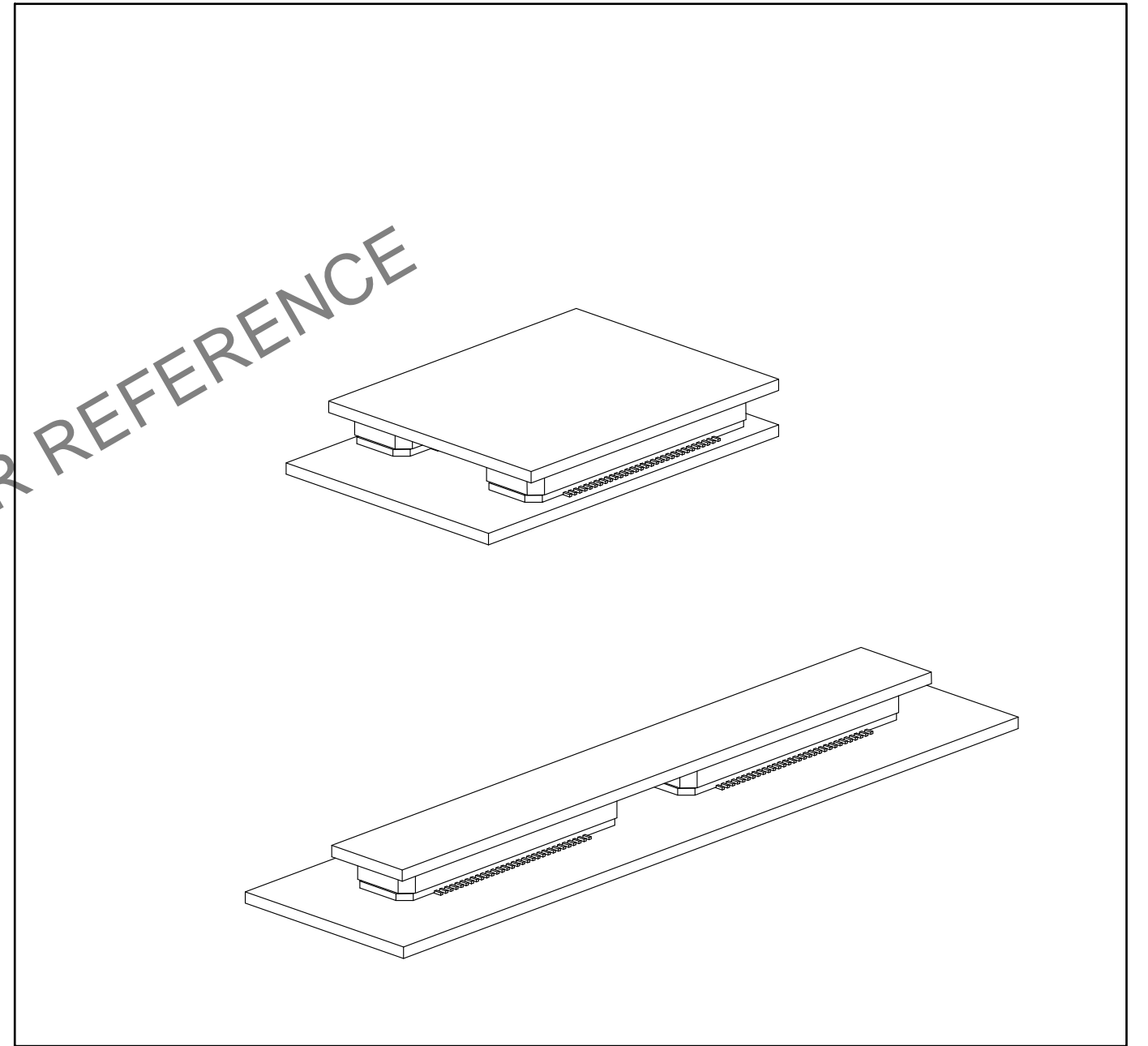
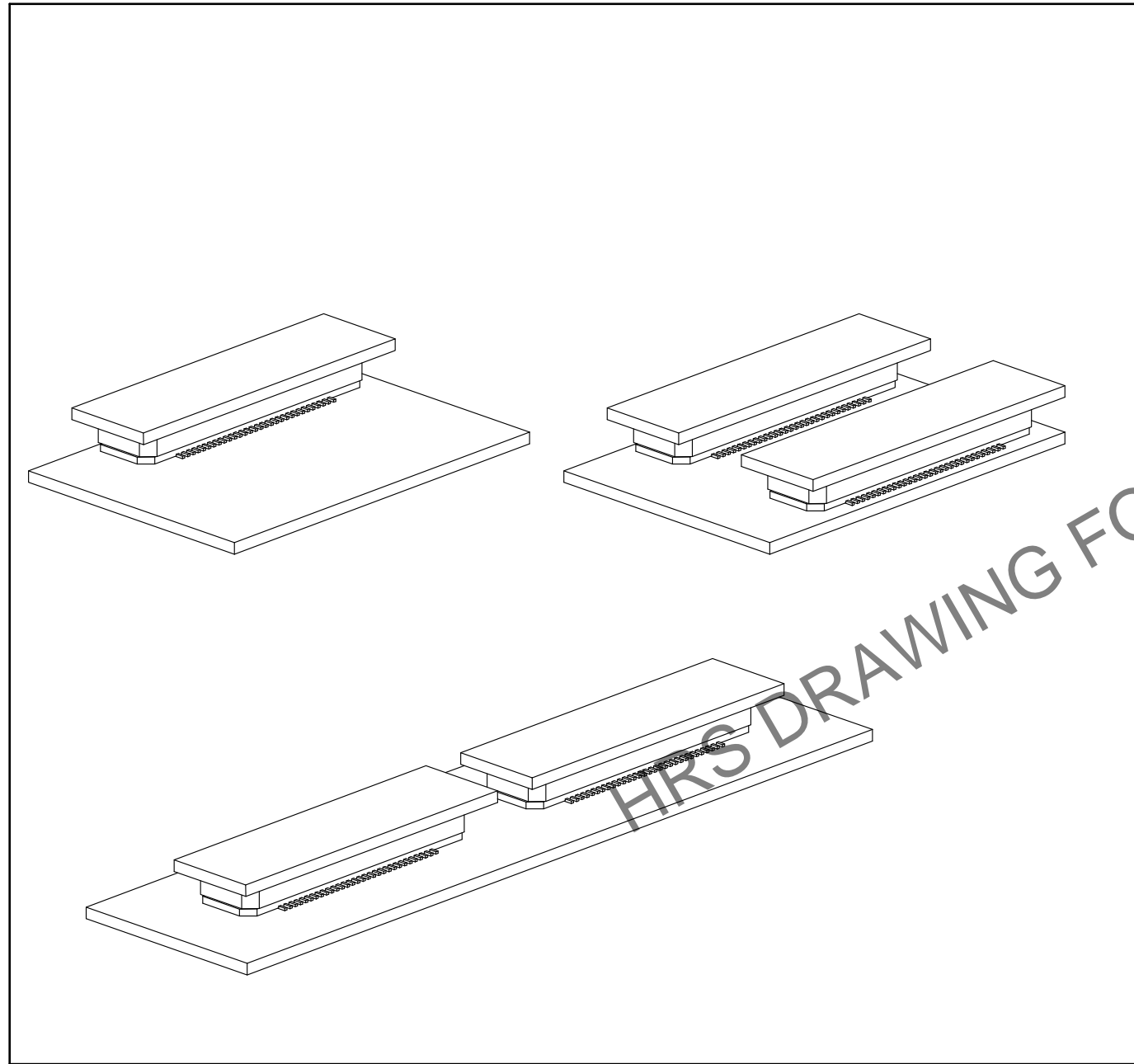
Jul.1.2024 Copyright 2024 HIROSE ELECTRIC CO., LTD. All Rights Reserved.
In case of consideration for using Automotive equipment / device which demand high reliability, kindly contact our sales window correspondents.

【Precaution】

When a board with multiple connectors mounted is mated, the connector may be damaged or deformed.
Please divide one side of the board so only one connector is mated per board.

OK

NG



HRS

DRAWING NO.	EDC-150736-71-25
PART NO.	FX8-80P-SV(71)
CODE NO.	CL578-0003-1-71