

HC-D50-KMQ-76/O1PG29 - Housing



1416404

<https://www.phoenixcontact.com/us/products/1416404>

Please be informed that the data shown in this PDF document is generated from our online catalog. Please find the complete data in the user documentation. Our general terms of use for downloads are valid.



Coupling housings D50, with double locking latch, material: die-cast aluminum, cable outlets: 1, straight, 1x Pg29, height: 76 mm, cable gland: none, Standard

Commercial data

Item number	1416404
Packing unit	10 pc
Minimum order quantity	1 pc
Product key	BF7AAE
Catalog page	Page 511 (C-4-2015)
GTIN	4055626072630
Weight per piece (including packing)	321.7 g
Weight per piece (excluding packing)	308 g
Country of origin	DE

HC-D50-KMQ-76/O1PG29 - Housing



1416404

<https://www.phoenixcontact.com/us/products/1416404>

Technical data

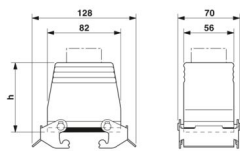
Notes

General	For contact inserts HC-D25, A16/A32
---------	-------------------------------------

Product properties

Product type	Housing with locking latch
Housing type	Coupling housings
Application	Standard
Type	D50
No. of cable outlets	1
Type of the screw connection	1x Pg29
Cable outlet	straight
Pg screw connection	none

Dimensions

Dimensional drawing	
Width	56 mm
Height	76 mm
Length	82 mm

Material specifications

Seal material	NBR
Housing material	die-cast aluminum
Housing surface material	Powder-coated, gray
Locking latch material	Steel, galvanized

Mechanical properties

Mechanical data

Type of the screw connection	1x Pg29
Locking type	Latch

Environmental and real-life conditions

Ambient conditions

Degree of protection	IP65
Ambient temperature (operation)	-40 °C ... 125 °C

HC-D50-KMQ-76/O1PG29 - Housing

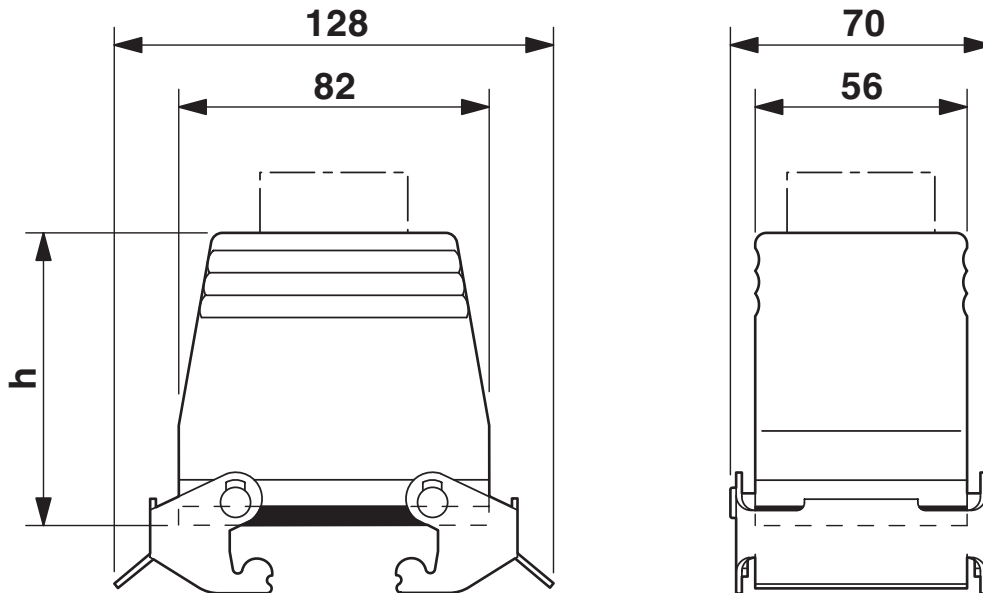
1416404

<https://www.phoenixcontact.com/us/products/1416404>



Drawings

Dimensional drawing



Dimensional drawing

HC-D50-KMQ-76/O1PG29 - Housing



1416404

<https://www.phoenixcontact.com/us/products/1416404>

Classifications

ECLASS

ECLASS-11.0	27440202
ECLASS-13.0	27440202

HC-D50-KMQ-76/O1PG29 - Housing



1416404

<https://www.phoenixcontact.com/us/products/1416404>

Environmental product compliance

EU RoHS	
Fulfills EU RoHS substance requirements	Yes, No exemptions
China RoHS	
Environment friendly use period (EFUP)	EFUP-E
	No hazardous substances above the limits
EU REACH SVHC	
REACH candidate substance (CAS No.)	No substance above 0.1 wt%

HC-D50-KMQ-76/O1PG29 - Housing



1416404

<https://www.phoenixcontact.com/us/products/1416404>

Accessories

G-INS-PG29-M68N-PNES-GY - Cable gland

1411146

<https://www.phoenixcontact.com/us/products/1411146>



Cable gland, material for screw connection: PA, application: Standard, external cable diameter 18 mm ... 25 mm, shielding: no, connecting thread: Pg29, color: silver-grey RAL 7001

G-INS-PG29-M68N-NNES-S - Cable gland

1411176

<https://www.phoenixcontact.com/us/products/1411176>



Cable gland, material for screw connection: Brass, nickel-plated, application: Standard, external cable diameter 18 mm ... 25 mm, shielding: no, connecting thread: Pg29, color: silver, with O-ring

HC-D50-KMQ-76/O1PG29 - Housing

1416404

<https://www.phoenixcontact.com/us/products/1416404>



G-INSEC-PG29-M68N-NNES-S - Cable gland

1411201

<https://www.phoenixcontact.com/us/products/1411201>



Cable gland, material for screw connection: Brass, nickel-plated, application: EMC, external cable diameter 18 mm ... 25 mm, shielding: yes, connecting thread: Pg29, color: silver, with O-ring

HC-BS-PG29 - Screw plug

1674532

<https://www.phoenixcontact.com/us/products/1674532>



Screw plug, material for screw connection: Brass, nickel-plated, connecting thread: Pg29, color: silver

Phoenix Contact 2024 © - all rights reserved
<https://www.phoenixcontact.com>

Phoenix Contact USA
586 Fulling Mill Road
Middletown, PA 17057, United States
(+717) 944-1300
info@phoenixcon.com