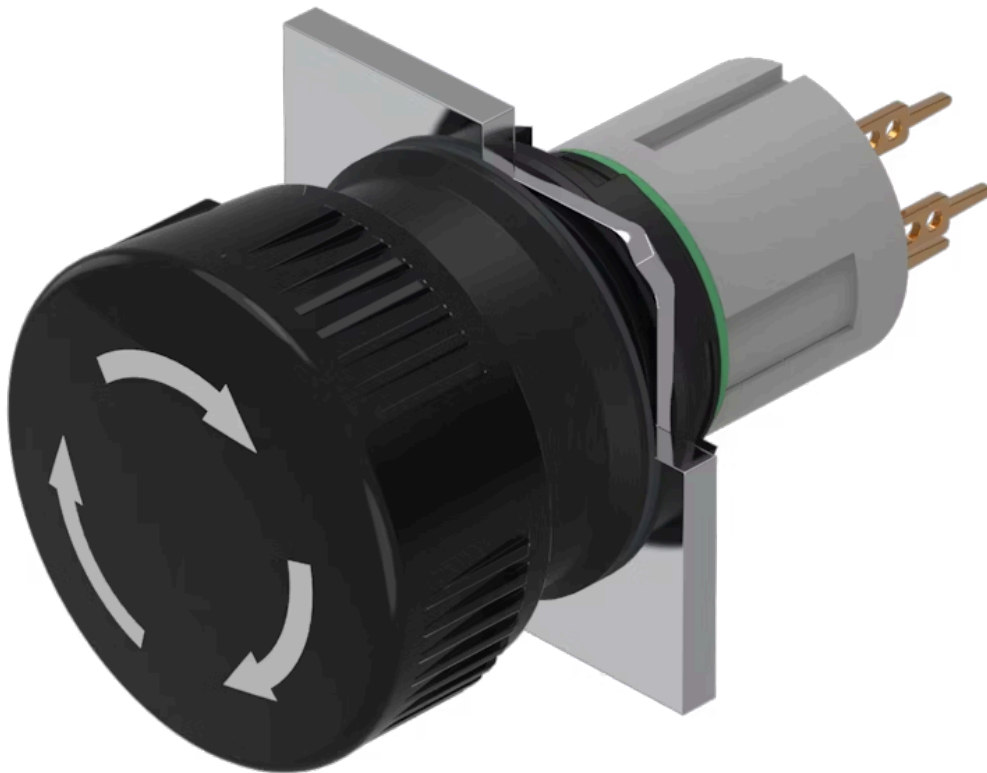


Actuator

51-
252.0260

Distribution by
DigiKey

DigiKey



<https://digikey.eao.com/p/51-252.0260>

Your product:



51-252.0260 Actuator

FRONT

Front dimension: Ø 24,5 mm

MOUNTING

Design: raised

OPERATING-/INDICATION PART

Lens colour: Black

Lens optics: opaque

Lens material: Plastic

Lens illumination: non illuminative

Lens shape: mushroom-head

ELECTRICAL CHARACTERISTICS

Switching voltage and switching current: 100 mA at 42 VAC/VDC

Contacts: 2 NC

MECHANICAL CHARACTERISTIC

Mechanical lifetime: 1 Mio. cycles of operation

Operating force: 1,8 ... 3,5 N

Contact material: Gold

Switching action: Maintained

Switching system: Low-level element

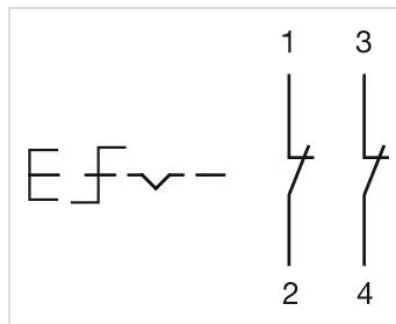
Weight:	0.011 kg
Terminal:	Universal terminal, 2 x 0.5 mm
Tightening torque:	Fixing nut max. 0.5 Nm
Switching system:	<p>This low-level switching element was designed for switching low powers in electronic circuits. The mechanism assures reliable switching of loads ranging from a few $\mu\text{A}/\mu\text{V}$ up to 100 mA/ 42 VAC/DC.</p> <p>Single-break momentary contact, as normally open or normally closed with 4 independent points of contact. 2 momentary contacts per switching element; combination of normally open and normally closed is possible.</p> <p>Special features are the long life, extremely short rebound time and stable contact resistance.</p>
Operating Travel:	3 mm

AMBIENT CONDITION

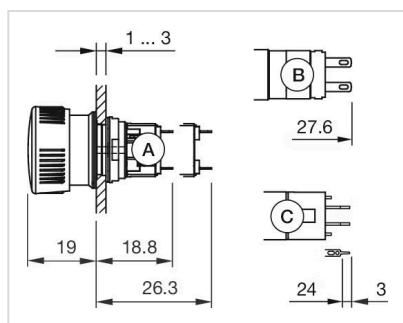
Storage temperature:	– 40 °C ... + 85 °C
Operating temperature:	– 25 °C ... + 55 °C
IP front protection:	IP65, according to DIN EN 60529

OTHER

Hints:	Marking arrows
Short Description:	Actuator, Ø 24,5 mm, mushroom-head, non illuminative, Black, Plastic, opaque, 2 NC, Maintained, Universal terminal, 2 x 0.5 mm, IP65, according to DIN EN 60529
Housing colour:	Black
Wiring diagrams:	



Dimension drawings:



A = Solder terminal
 B = Plug-in terminal 2.8 mm x 0.5 mm
 C = Universal terminal 2.0 mm x 0.5 mm

Mounting cut-outs:

