

UM-PRO 108-PROFIL L 9,25CM GY - Profile

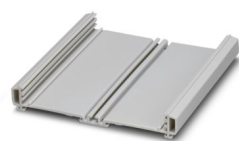


2201135

<https://www.phoenixcontact.com/us/products/2201135>

Please be informed that the data shown in this PDF document is generated from our online catalog. Please find the complete data in the user documentation. Our general terms of use for downloads are valid.

Press-drawn section housings, Latching with side elements, latching with foot element, Basic profile, profile width (internal): 108 mm, length: 92.5 mm, depth: 19.8 mm



Your advantages

- Tailor-made housing length, can be cut to length with millimeter precision
- Easy integration of large electronics components, thanks to the open design
- Heat-resistant UM-PRO made from polyamide with UL approval up to 100°C
- Easy device mounting thanks to snap-mount principle (the sides are fixed without the aid of tools)
- High degree of flexibility, thanks to freely positionable covering hoods

Commercial data

Item number	2201135
Packing unit	50 pc
Minimum order quantity	50 pc
Note	Made to order (non-returnable)
Sales key	AC13
Product key	ACHDAA
GTIN	4046356734189
Weight per piece (including packing)	55.3 g
Weight per piece (excluding packing)	55.3 g
Customs tariff number	39169010
Country of origin	DE

UM-PRO 108-PROFIL L 9,25CM GY - Profile



2201135

<https://www.phoenixcontact.com/us/products/2201135>

Technical data

Product properties

Product type	Component housing lower part
Housing type	Press-drawn section housings
Housing series	UM-PRO
Type	Basic profile

Dimensions

Depth	19.8 mm
Length	9.25 cm

Internal dimensions

Profile width (internal)	108 mm
--------------------------	--------

PCB design

PCB thickness	1.4 mm ... 1.8 mm
---------------	-------------------

Material specifications

Color (Housing)	light gray (RAL 7035)
Housing material	Polyamide
Surface characteristics	untreated

Environmental and real-life conditions

Ambient conditions

Max. IP code to attain	IP20
Ambient temperature (operation)	-40 °C ... 105 °C (depending on power dissipation)
Ambient temperature (storage/transport)	-40 °C ... 55 °C
Ambient temperature (assembly)	-5 °C ... 100 °C
Relative humidity (storage/transport)	80 %

PCB data

Number of PCB holders	3
Type of PCB mount	Insertion/securing with additional elements
Thickness of the PCB	1.4 mm ... 1.8 mm

Mounting

Mounting type	Latching with side elements, latching with foot element
Mounting position	parallel to the DIN rail


UM-PRO 108-PROFIL L 9,25CM GY - Profile



2201135

<https://www.phoenixcontact.com/us/products/2201135>

Approvals

 To download certificates, visit the product detail page: <https://www.phoenixcontact.com/us/products/2201135>



UL Recognized

Approval ID: E240868

UM-PRO 108-PROFIL L 9,25CM GY - Profile



2201135

<https://www.phoenixcontact.com/us/products/2201135>

Classifications

ECLASS

ECLASS-11.0	27182701
ECLASS-13.0	27190601

ETIM

ETIM 9.0	EC002779
----------	----------

UNSPSC

UNSPSC 21.0	31261500
-------------	----------

UM-PRO 108-PROFIL L 9,25CM GY - Profile



2201135

<https://www.phoenixcontact.com/us/products/2201135>

Environmental product compliance

EU RoHS	
Fulfills EU RoHS substance requirements	Yes, No exemptions
China RoHS	
Environment friendly use period (EFUP)	EFUP-E
	No hazardous substances above the limits
EU REACH SVHC	
REACH candidate substance (CAS No.)	No substance above 0.1 wt%

Phoenix Contact 2024 © - all rights reserved
<https://www.phoenixcontact.com>

Phoenix Contact USA
586 Fulling Mill Road
Middletown, PA 17057, United States
(+717) 944-1300
info@phoenixcon.com