

# HC-EVO-B06-SHWSC-2SSM20-PLRBK - Housing



1421329

<https://www.phoenixcontact.com/us/products/1421329>

Please be informed that the data shown in this PDF document is generated from our online catalog. Please find the complete data in the user documentation. Our general terms of use for downloads are valid.



Box mounting bases B6, with single locking latch, material: PA, protective cover material: PC, cable outlets: 2, lateral, 2x M20, height: 74 mm, cable gland: none, protective cover: yes, Standard, including 2x reducing adapter

## Product description

One screw connection opening is closed, however it can be opened using a screwdriver. Incl. two plastic reductions M32 to M20

## Your advantages

- Lower costs than metal version
- Low weight
- Lower risk of condensation

## Commercial data

Item number	1421329
Packing unit	1 pc
Minimum order quantity	1 pc
Sales key	BF57
Product key	BF7APL
Catalog page	Page 598 (C-2-2019)
GTIN	4055626264851
Weight per piece (including packing)	179.4 g
Weight per piece (excluding packing)	179.2 g
Customs tariff number	85389099
Country of origin	PL

# HC-EVO-B06-SHWSC-2SSM20-PLRBK - Housing



1421329

<https://www.phoenixcontact.com/us/products/1421329>

## Technical data

### Notes

General	For contact inserts HC-B6, BB10, DD24, M
---------	--

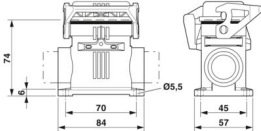
### Product properties

Product type	Housing with locking latch
Housing type	Box mounting bases
Product family	HC-EVO-B
Application	Standard
Type	B6
No. of cable outlets	2
Type of the screw connection	2x M20
Type	Tall design
Protective cover	yes
Cable outlet	lateral
Pg screw connection	none

### Data management status

Article revision	03
------------------	----

### Dimensions

Dimensional drawing	
Width	57 mm
Height	74 mm
Length	84 mm
Hole diameter	5.5 mm

### Material specifications

Flammability rating according to UL 94	V0 (Housing)
	V0 (Interlock)
	V0 (Protective cover)
Seal material	NBR
Housing material	PA
Material, protective cover	PC
Locking latch material	PA

### Mechanical properties

Mechanical data
-----------------

Type of the screw connection	2x M20
Locking type	Latch

## Connection data

Tightening torque	2 Nm ... 3 Nm (for M5 mounting screws on the surface-mount housing)
-------------------	---

## Mounting

Assembly note	Two plastic reductions M32 to M20 are provided
	One of the two openings for the screw connections is sealed but can be broken open using a screwdriver.

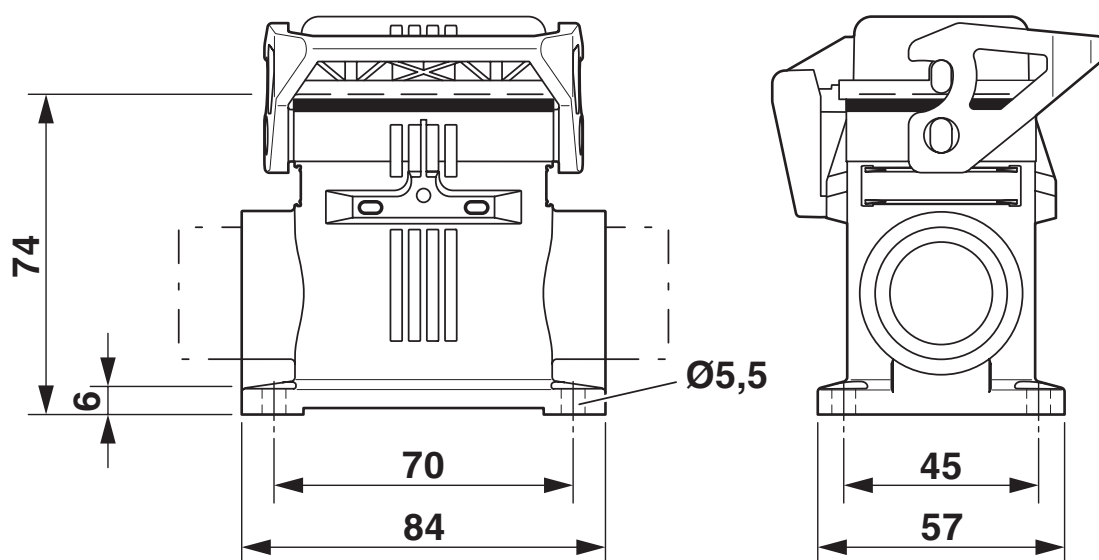
## Environmental and real-life conditions

### Ambient conditions

Degree of protection	IP66 (when plugged in or with locked protective cover)
Enclosure rating (NEMA)	12 (UL 50e)
Impact strength	IK08
Ambient temperature (operation)	-40 °C ... 125 °C

## Drawings

Dimensional drawing



Dimensional drawing

1421329

<https://www.phoenixcontact.com/us/products/1421329>

## Approvals

To download certificates, visit the product detail page: <https://www.phoenixcontact.com/us/products/1421329>

### DNV

Approval ID: TAE000037S



### EAC

Approval ID: RU C-DE.AI30.B.01102



### EAC

Approval ID: RU C-DE.BL08.B.00511



### cUL Recognized

Approval ID: E255026



### UL Recognized

Approval ID: E255026

### cULus Recognized

Classifications

ECLASS

ECLASS-11.0	27440202
ECLASS-12.0	27440202
ECLASS-13.0	27440202

ETIM

ETIM 9.0	EC000437
----------	----------

UNSPSC

UNSPSC 21.0	31261500
-------------	----------

Environmental product compliance

EU RoHS	
Fulfills EU RoHS substance requirements	Yes, No exemptions
China RoHS	
Environment friendly use period (EFUP)	EFUP-E
	No hazardous substances above the limits
EU REACH SVHC	
REACH candidate substance (CAS No.)	No substance above 0.1 wt%

Phoenix Contact 2024 © - all rights reserved  
<https://www.phoenixcontact.com>

Phoenix Contact USA  
586 Fulling Mill Road  
Middletown, PA 17057, United States  
(+717) 944-1300  
[info@phoenixcon.com](mailto:info@phoenixcon.com)