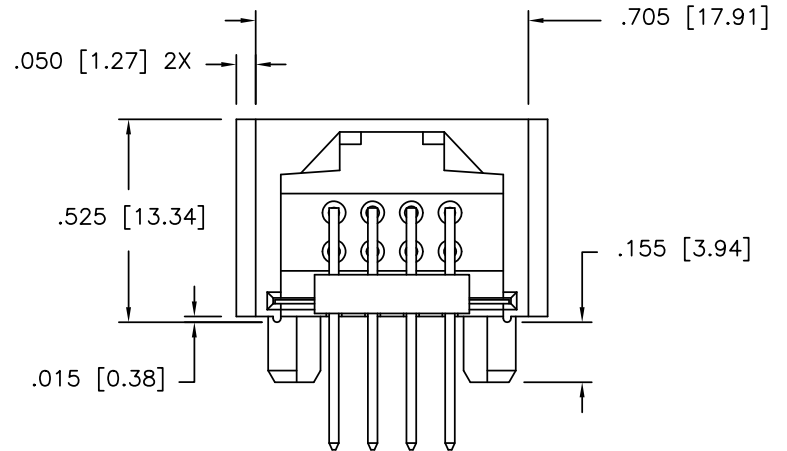
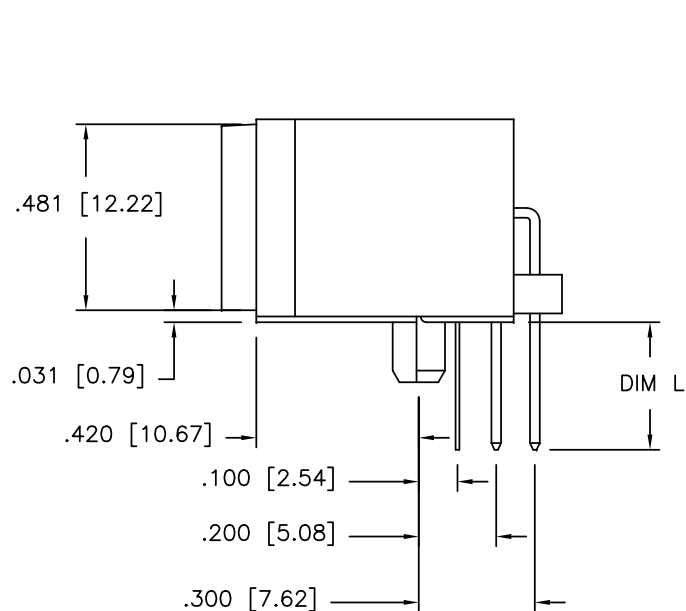
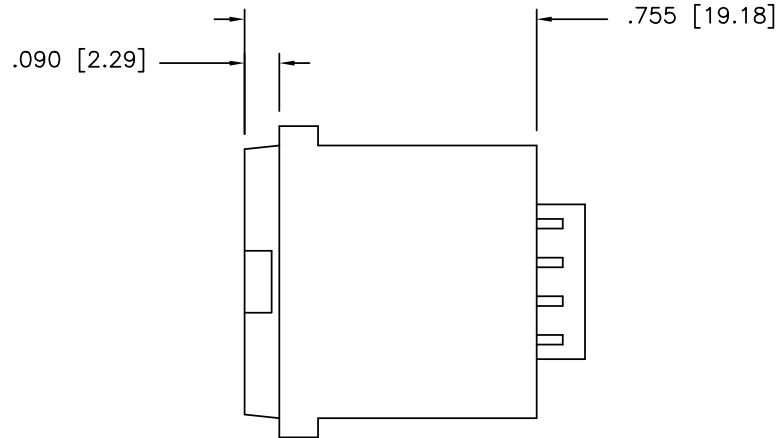

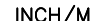



PRODUCT NUMBER
SEE TABLE



mat'l. code				surface ISO 1302 ✓		tolerance ISO 406 ISO 1101		projection 		product family LATCH-N-LOK				
ltr ecn nodr date				tolerances unless otherwise specified						title				
M	M07-0521	AGS	12/10/07	angles	linear	.XXX±.01/.XXX±.03		INCH/MM 	2X4 LNL LOW PROFILE HEADER ASSEMBLY					
N	ELX-N-004176	KW	06/22/11			.XXX±.005/.XXX±.013								
P	ELX-N-008473	ZK	11/28/11			.XXX±.0020/.XXX±.0051								
				0°±2°				scale 2:1						
				dr	M. CLOUSER	12/22/89			dwg no		sheet 1 of 2		size	
J	M05-0052	MHT	3/16/05	engr	D. HORCHLER	12/22/89			69958		A3			
K	M06-0285	AGS	7/28/06	chr	D. HORCHLER	12/22/89								
L	M06-0365	AGS	9/20/06	app	D. HORCHLER	12/22/89								
sheet revision				P	P									
index				sheet	1	2								

PDS: Rev :P

STATUS: Released

Printed: Jan 06, 2012

69958-XXXXLF

LEAD FREE OPTION ⑥⑧

HIGH TEMPERATURE ⑦

COLOR ④

1	70343-LT GRAY	OBS
2	80166 OFF WHITE	
3	70634-DK GRAY	OBS
4	701 BLACK	
5	70511-SLATE GRAY	OBS
7	70455 SILVER GRAY	
8	80189 PEARL WHITE	OBS
9	70419 PEBBLE GRAY	

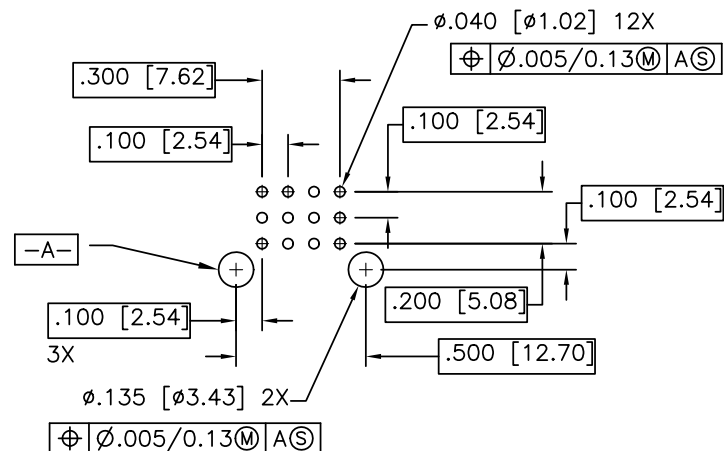
PLATING ③

0	30u" MIN OVER 50u"MIN Ni
3	30u" MIN OVER 50u"MIN Ni
5	50u" MIN OVER 50u"MIN Ni

PIN LENGTH

DIM L

0	.200/5.08
1	.130/3.30



RECOMMENDED PCB LAYOUT

NOTES:

1. HEADER SHROUD
MAT'L: HIGH TEMPERATURE THERMOPLASTIC, UL-94V-0 RATED
2. GROUND CONTACT
MAT'L: COPPER ALLOY
PLATING: 100-160u"/2.54-4.06u TIN.
- ③. SIGNAL CONTACT
MAT'L: COPPER ALLOY
PLATING OPTIONALLY: PERFORMANCE PLATING WILL BE EITHER GOLD OR GXT
ON CONTACT AREA OR TAIL, OPTIONALLY (78---295u") TIN ON TAIL.
- ④. NUMBERS SHOWN ARE FOR G.E. LEXAN AND
ARE FOR REFERENCE ONLY.
5. THIS ASSEMBLY UL APPROVED PER FILE E66906 VOL. 1, SEC. 84
AND CSA APPROVED PER MASTER FILE LR46923
- ⑥. ADD LF SUFFIX AT THE END OF PART NUMBER FOR LEAD FREE OPTION.
- ⑦. FOR 69958-XXXXLF THE HOUSING WILL WITHSTAND EXPOSURE TO 260°C PEAK TEMPERATURE
FOR 69958-XXXXMLF CAN WITHSTAND EXPOSURE TO 270°C PEAK TEMPERATURE
FOR 15 SECONDS IN A WAVE SOLDER APPLICATION WITH A 1.5mm
MINIMUM THICK CIRCUIT BOARD. SEE APPLICATION NOTES/PROCEDURES
IF THEY ARE AVAILABLE.
- ⑧. THIS PRODUCT MEETS EUROPEAN UNION DIRECTIVES AND OTHER
COUNTRY REGULATION AS DESCRIBED IN GS-22-008.
9. PRODUCT SPEC: GS-12-003

mat'l. code		surface ISO 1302 ✓		tolerance ISO 406 ISO 1101		projection INCH/MM		product family LATCH-N-LOK	
ltr ecn nodr date		tolerances unless otherwise specified		line		scale 1:1		title	
P		angles		.XX±.01/.3		INCH/MM		2X4 LNL LOW PROFILE HEADER ASSEMBLY	
		0°±2'		.XXX±.005/.13				dwg no	
		dr M. CLOUSER 12/22/89		.XXX±.0020/.051				sheet 2 of 2	
		enr D. HORCHLER 12/22/89						size	
		chr D. HORCHLER 12/22/89						69958	
		app D. HORCHLER 12/22/89						A3	
sheet		revision						type Product Customer Drawing	
index		sheet							

Mouser Electronics

Authorized Distributor

Click to View Pricing, Inventory, Delivery & Lifecycle Information:

[FCI / Amphenol:](#)

[69958-104](#) [69958-104LF](#) [69958-004](#) [69958-007](#) [69958-009](#) [69958-102](#) [69958-102LF](#) [69958-107](#) [69958-107LF](#)
[69958-109](#) [69958-002](#) [69958-104MLF](#)