

1316038K66E-000

SMA Bulkhead - Rear Mount Straight Clamp Female For Flexible Cable

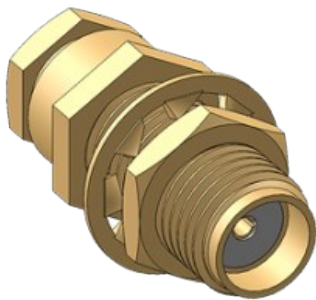
Mil #: SM-A-802905-3

Mil #: SM-A-802905-1

Mil #: M39012/59-3006



If you don't see the file type you're looking for please [contact us](#).



| | |
|--------------------------|----------------------------------|
| Gender: | Female (Jack) |
| Orientation: | Straight |
| Mounting: | Bulkhead - Rear Mount |
| Body Material: | Stainless Steel |
| Body Plating: | Passivate |
| Contact Plating: | Gold |
| Epoxy Captivated: | No |
| Frequency: | 3 GHz |
| Impedance: | 50 Ohms |
| Dimension A: | 0.319 |
| Dimension B: | 0.292 |
| Reverse Polarity: | No |
| Cable: | RG-178B, M17-93, RG-196A, M17-93 |

Distributor Inventory

| Delta P/N | Mil Dwg P/N | Qty | Inv.Date | In Stock at | Phone | RFQ | Shop |
|-------------------|----------------|-----|------------|--------------------------|--------------|---------------------|---------------------|
| 1316-038-K66E-000 | M39012/59-3006 | 237 | 12-08-2018 | Microwave Components Inc | 772/286-4455 | RFQ | Buy |

DELTA VISUAL PRODUCT FINDER



US Headquarters

Delta Electronics Mfg. Corp.

416 Cabot St.

PO Box 53

Beverly, MA 01915

Phone: 978-927-1060

Fax: 978-922-6430

sales@deltarf.com

China Headquarters

Delta Microwave Electronics

(Nanjing) Co., Ltd.

No. 15 Ming Rui Road

Nanjing 211151, China

Phone: +86 25 84195408

Fax: +86 25 84195407

sales@deltarfchina.com

Social Media



Support

Need Technical Support?

Have A Customer Service Question?

Click on the "Delta Support"

Box Below To Start A Conversation.

Available 8:00AM - 4:45PM EST M-F.

If after hours, please use our Contact page, thank-you.



We use cookies on this site to enhance your user experience

By clicking on the button below, you agree to our use of cookies.