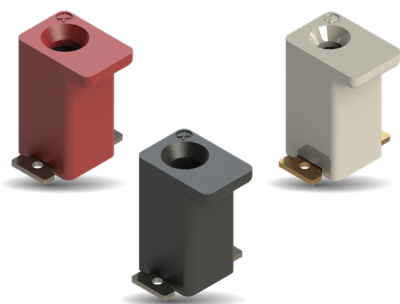


# 1 Way Vertical Top Entry Poke-Home 18-22 AWG

9296-600



## GENERAL DESCRIPTION

Vertical poke-home connectors were introduced into the market several years ago to provide a reliable, yet cost effective discrete wire-to-board termination in perpendicular applications. These were designed to bridge the gap between inconsistent and challenging hand soldering of wires and costly 2-piece connector systems in low pin count applications

The 9296-600 connector was developed specifically to support 18 to 22AWG solid or stranded wire terminations used in power supply, LED driver and industrial control products where PCB space is limited. This connector offers a robust single beam contact which securely captures and retains the wire in a 23% smaller package size over previous versions.

## APPLICATIONS

- Replace inconsistent hand soldered perpendicular wire terminations onto PCB's in:
  - ▶ Power Supplies
  - ▶ LED Drivers
  - ▶ Industrial/Motor Controls
- Offer a simple and cost reduced solution to existing 2-Piece connector systems
- Application Notes: Refer to 201-01-211
- Product Specification: Refer to 201-01-210

## FEATURES AND BENEFITS

- Pre-Plated phosphor bronze contact material provides excellent spring performance with high fatigue and corrosion resistance
- The single stamped and formed box contact maximizes board attachment and wire capture strength
- Integral molded in flange provides a generous vacuum pick-up point for automated SMT placement
- UL approved color range to match individual wires for easy and accurate final product assembly

## ELECTRICAL

- Current Rating: See Below
- Voltage Rating: 600 VAC (RMS) or DC Equivalent

## ENVIRONMENTAL

- Operating Temperature: -40°C to +130°C
- Storage Temperature: -40°C to +60°C

## MECHANICAL

- Insulator Material: Glass-Filled Nylon 46, UL94 V0
- Contact Material: Phosphor Bronze
- Plating: Lead-Free Tin Over Nickel
- Durability: 3 Cycles

## HOW TO ORDER

**00**  
Prefix  
Wire to Board  
Connector

**9296**  
Series

**001**  
No. of Ways

**XXX**  
Description  
603 = 18-22 AWG Solid or  
Stranded

**X**  
Plating  
2 = Brown  
3 = Blue  
4 = Yellow  
5 = Red  
6 = Green  
7 = Orange  
8 = Black  
9 = White

**06**  
Plating  
006 = Tin Plated



589296001000014: Only for 18 AWG Solid

## CURRENT RATING

18AWG	20AWG	22AWG
8A	7A	6A

Safety Standards: UL 1977-File #E90723



**SALES DRAWINGS**  
CLICK TO VIEW