

# HC-D25-SML-57/O1PG21 - Housing



1416390  
<https://www.phoenixcontact.com/us/products/1416390>

Please be informed that the data shown in this PDF document is generated from our online catalog. Please find the complete data in the user documentation. Our general terms of use for downloads are valid.



Box mounting bases D25, with single locking latch, material: die-cast aluminum, cable outlets: 1, left (view of the opened single locking latch), 1x Pg21, height: 57 mm, cable gland: none

## Commercial data

Item number	1416390
Packing unit	10 pc
Minimum order quantity	1 pc
Product key	BF7AAE
Catalog page	Page 509 (C-4-2015)
GTIN	4055626072517
Weight per piece (including packing)	250.88 g
Weight per piece (excluding packing)	250.88 g
Country of origin	DE

# HC-D25-SML-57/O1PG21 - Housing



1416390

<https://www.phoenixcontact.com/us/products/1416390>

## Technical data

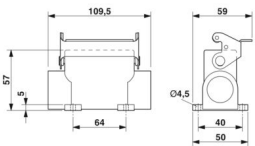
### Notes

General	For contact inserts HC-D25, A16
---------	---------------------------------

### Product properties

Product type	Housing with locking latch
Housing type	Box mounting bases
Type	D25
No. of cable outlets	1
Type of the screw connection	1x Pg21
Cable outlet	left (view of the opened single locking latch)
Pg screw connection	none

### Dimensions

Dimensional drawing	
Width	50 mm
Height	57 mm
Length	109.5 mm

### Material specifications

Housing material	die-cast aluminum
Housing surface material	Powder-coated, gray
Locking latch material	Steel, galvanized

### Mechanical properties

#### Mechanical data

Type of the screw connection	1x Pg21
Locking type	Latch

### Environmental and real-life conditions

#### Ambient conditions

Degree of protection	IP65
Ambient temperature (operation)	-40 °C ... 125 °C

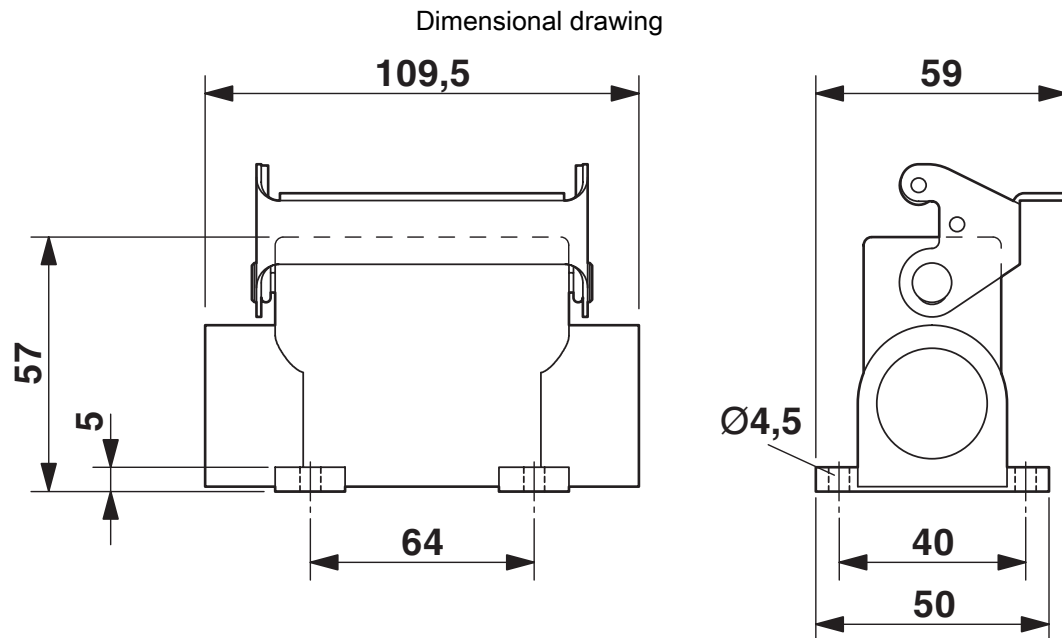
# HC-D25-SML-57/O1PG21 - Housing

1416390

<https://www.phoenixcontact.com/us/products/1416390>



## Drawings



Dimensional drawing

# HC-D25-SML-57/O1PG21 - Housing



1416390

<https://www.phoenixcontact.com/us/products/1416390>

## Classifications

### ECLASS

ECLASS-11.0	27440202
ECLASS-13.0	27440202

Environmental product compliance

EU RoHS	
Fulfills EU RoHS substance requirements	Yes, No exemptions
China RoHS	
Environment friendly use period (EFUP)	EFUP-E
	No hazardous substances above the limits
EU REACH SVHC	
REACH candidate substance (CAS No.)	No substance above 0.1 wt%

# HC-D25-SML-57/O1PG21 - Housing

1416390

<https://www.phoenixcontact.com/us/products/1416390>



## Accessories

### G-INS-PG21-M68N-PNES-GY - Cable gland

1411145

<https://www.phoenixcontact.com/us/products/1411145>



Cable gland, material for screw connection: PA, application: Standard, external cable diameter 13 mm ... 18 mm, shielding: no, connecting thread: Pg21, color: silver-grey RAL 7001

---

### G-INS-PG21-M68N-NNES-S - Cable gland

1411175

<https://www.phoenixcontact.com/us/products/1411175>



Cable gland, material for screw connection: Brass, nickel-plated, application: Standard, external cable diameter 13 mm ... 18 mm, shielding: no, connecting thread: Pg21, color: silver, with O-ring

# HC-D25-SML-57/O1PG21 - Housing

1416390

<https://www.phoenixcontact.com/us/products/1416390>



## G-INSEC-PG21-M68N-NNES-S - Cable gland

1411200

<https://www.phoenixcontact.com/us/products/1411200>



Cable gland, material for screw connection: Brass, nickel-plated, application: EMC, external cable diameter 13 mm ... 18 mm, shielding: yes, connecting thread: Pg21, color: silver, with O-ring

---

## HC-BS-PG21 - Screw plug

1674529

<https://www.phoenixcontact.com/us/products/1674529>



Screw plug, material for screw connection: Brass, nickel-plated, connecting thread: Pg21, color: silver

---

Phoenix Contact 2024 © - all rights reserved  
<https://www.phoenixcontact.com>

Phoenix Contact USA  
586 Fulling Mill Road  
Middletown, PA 17057, United States  
(+717) 944-1300  
[info@phoenixcon.com](mailto:info@phoenixcon.com)