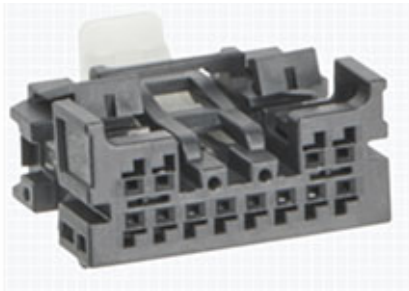




**Part Number :** [2065232123](#)  
**Product Description :** Mini50 Unsealed Receptacle, Dual Row, UL94-HB, with CPA, 12 Circuits, Polarization Option C, Dark Gray  
**Series Number :** [206523](#)  
**Status :** Active  
**Product Category :** [Connector Housings](#)



## Documents & Resources

### Drawings

[2065232123\\_sd.pdf](#)  
[PK-31301-538-001.pdf](#)

### 3D Models and Design Files

[2065232123\\_stp.zip](#)

### Specifications

[2065230000-AS-000.pdf](#)  
[2065230000-AS-CH-000.pdf](#)  
[2065230000-PS-000.pdf](#)

## Product Environment Compliance

### Compliance

GADSL/IMDS	Compliant
China RoHS	
EU ELV	Compliant per 2000/53/EC
Low-Halogen Status	Not Low-Halogen per IEC 61249-2-21
REACH SVHC	Not Contained per D(2024)4144-DC (27 June 2024)
EU RoHS	Compliant per EU 2015/863

### [Multiple Part Product Compliance Statements](#)

- Eu RoHS
- REACH SVHC
- Low-Halogen

### [Multiple Part Industry Compliance Documents](#)

- IPC 1752A Class C
- IPC 1752A Class D
- Molex Product Compliance Declaration
- IEC-62474
- chemSHERPA (xml)

## EU RoHS Certificate of Compliance

---

### Part Details

#### General

Status	Active
Category	Connector Housings
Series	206523
Description	Mini50 Unsealed Receptacle, Dual Row, UL94-HB, with CPA, 12 Circuits, Polarization Option C, Dark Gray
Application	Automotive, Power, Wire-to-Board
Product Name	Mini50
UPC	191128857079

#### Physical

Circuits (maximum)	12
Color - Resin	Gray (Dark)
Gender	Receptacle
Glow-Wire Capable	No
Keying to Mating Part	Yes
Lock to Mating Part	Yes
Material - Resin	PBT
Net Weight	1.570/g
Number of Rows	2
Packaging Type	Bag
Panel Mount	No
Pitch - Mating Interface	2.00mm
Pitch - Termination Interface	2.00mm
Polarization	C
Polarized to Mating Part	Yes

Stackable	No
Temperature Range - Operating	-40° to +100°C

---

## Mates With / Use With

### Mates with Part(s)

Description	Part Number
Mini50 Unsealed Header, Right-Angle, SMT, Dual Row, 12 Circuits, Tin (Sn) Plating, Polarization Option C, Dark Gray, Tape and Reel	<u>348978122</u>
Mini50 Unsealed Header, Right-Angle, SMT, Dual Row, 12 Circuits, Tin (Sn) Plating, Polarization Option C, Dark Gray, Tube	<u>348979122</u>
Mini50 Unsealed Vertical Header, Dual Row, 12 Circuit, Polarization Option C, Dark Gray, Tray	<u>348250126</u>
Mini50 Unsealed Vertical Header, Dual Row, 12 Circuit, Polarization Option C, Dark Gray, Tube	<u>348259126</u>
Mini50 Unsealed Right-Angle Header, Dual Row, 12 Circuit, Polarization Option C, 2.80mm Pin Length, Dark Gray, Tray	<u>348260126</u>
Mini50 Unsealed Right-Angle Header, Dual Row, 12 Circuit, Polarization Option C, 2.80mm Pin Length, Dark Gray, Tube	<u>348269126</u>

### Use with Part(s)

Description	Part Number
CTX50 Unsealed Receptacle Terminals	<u>560023</u>