

# Type LPA-08

## In-Line Fuse Holder

### 1/4" x 1 1/4" (6.3 x 32mm) Fuses



www.optifuse.com

(619) 593-5050

#### Ratings:

**Fuse Type:** 1/4" x 1 1/4" (6.3 x 32mm)

**Electrical Rating:** 32VDC

**Body:** Polycarbonate

**Contacts:** Brass

**Standard Wire Sizes:** #14 ~ #18 AWG

**Standard Wire Colors:** Red

**Standard Body colors:** Red and Black

**Standard Wire Length:** 6 inches

#### Part number format

**LPA-08X-##Z**

where **X** = Body color

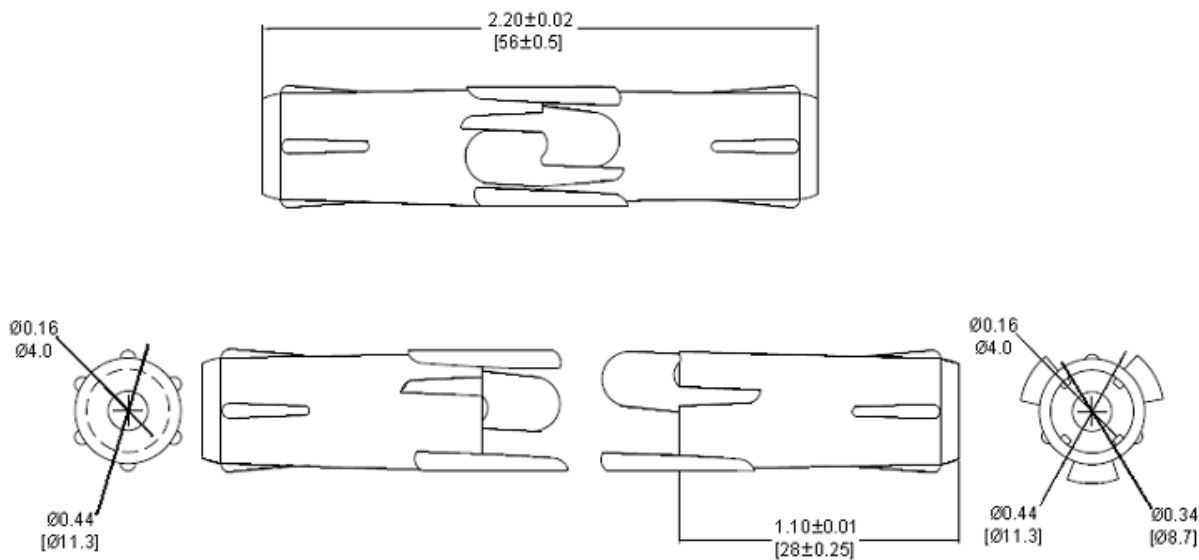
**##** = Wire gauge

**Z** = Wire color

Wire Gauge	Max. Amperage
14 AWG	20 A
16 AWG	15 A
18 AWG	10 A

Available in various wire gauges and lengths, and body and wire colors.  
Contact factory for those not listed above.

#### Mechanical Dimensions: Inches [mm]



#### Warning:



- Operation beyond the specified maximum ratings or improper use may result in damage and possible electrical arcing and/or flame.
- Avoid contact of device with chemical solvent. Prolonged contact may damage the device performance.
- Not designed for prolonged liquid exposure or submersible applications.