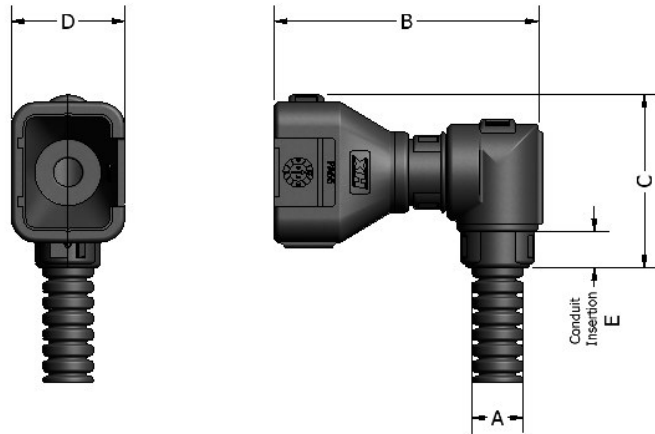


Description

A new range of 90° Elbow fittings offering a compact and high integrity connection between the Ampseal automotive connectors and **Harnessflex conduit systems**.

These fittings are designed to snap together over all **Harnessflex slit** and **unslit conduits** including **NC, CTPA, MPP and DSPP**.

The 90° elbow allows the conduit to swivel 360° around the connector housing, sufficient to avoid the problems associated with one-piece interfaces of over flexing due to movement or vibration.



Specifications

Material: Nylon (Polyamide 6,6)
Colour: Black
IP rating: IP40
Pull off: Nominally 120N

Operating temperature range

Static Applications -40 to 120°C

Dynamic:

Continuous: -5 to 120°C

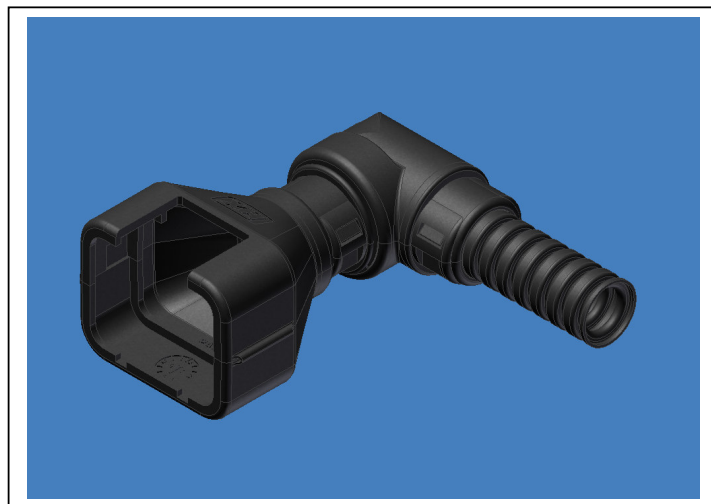
Short term: -5 to 150°C

Complies with the end of life vehicle directive ELV/EU 2000/53/EC

other external hinged fittings & accessories.

Including 'Y' pieces, 'T' pieces, elbows, joiners, connector interfaces, customised manifolds, multi-way reducers and smooth end grommets

PART NUMBER	CONNECTOR	Conduit size A	Nominal Dimensions (mm)			
			B	C	D	E
CI08-90-AT2PL	2 Way	NC08	49.3	32	17.3	7.1
CI08-90-AT3PL	3 Way	NC08	49.3	34.2	17.3	7.1
CI08-90-AT4PL	4 Way	NC08	53.3	34.5	22.6	7.1
CI08-90-AT6PL	6 Way	NC08	53.3	35.6	22.6	7.1



Contact details:

Harnessflex Limited.

PO Box 7690,

Birmingham.

B46 1HS, UK

tel: +44 (0)1675 468222

fax: +44 (0)1675 464930

e-mail: sales@harnessflex.co.uk