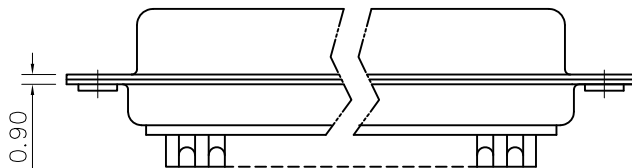
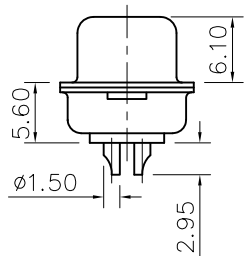
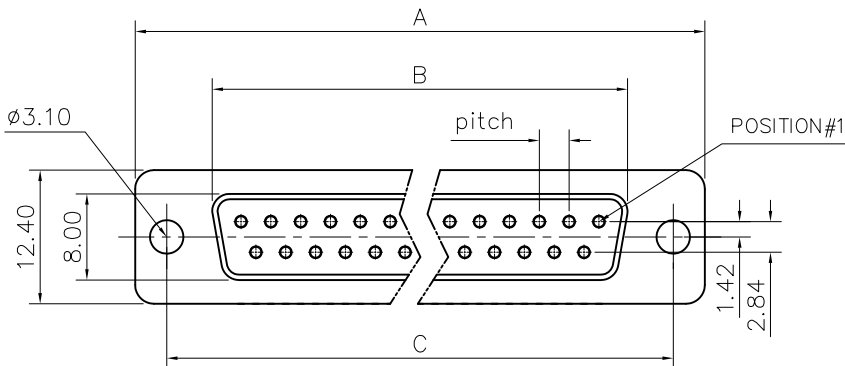


This document is the property of Amphenol Corporation and is delivered on the express condition that it is not to be disclosed, reproduced or used, in whole or in part, for manufacture or sale by anyone other than Amphenol Corporation without its prior consent, & that no right is granted to disclose or to use any information in this document.



Customer drawing

DIM.S SHELL	A	B	C	Pitch
9	30.70	16.40	25.00	2.74
15	39.00	24.80	33.30	2.74
25	52.90	38.50	47.00	2.77
37	69.20	54.90	63.50	2.77

REVISIONS				
SYM	ECN	DESCRIPTION	DATE	APPROVED
1	HK--	First Release Drawing	12/27/07	IP

### D-SUB TECHNICAL DATA

SHELL : Steel 2.5um(100u") min tin over 1.25um(50u") min nickel  
BODY : Glass filled thermoplastic.  
Flame retardant to UL94 V-0 Color Black  
CONTACTS : Phosphor bronze  
0.40um(15u") min gold over 1.25um(50u") min nickel  
ELECTRICAL : Voltage rating :300 V RMS at 50 Hz  
Current rating 7.5A.  
Insulation resistance >5000 M Ohms  
Contact resistance 20 mOhms max.  
CLIMATIC : Temperature range -55 °C up to 125°C  
Damp heat 56 days(40 °C-95% HR)  
MARKING : Amphenol...(Series No.)  
Commercial reference  
Manufacturing date

### PRODUCT CODE

L 77DF X XX S

L: RoHS Compliance

77DF: tinned shell  
for receptacle

Shell Size :E,A,B,C

Contact type:  
S: Socket

Configuration: 09,15,25,37

UNLESS OTHERWISE SPECIFIED TOLERANCES		APPROVAL	DATE
U.S.	METRIC	DRAWN	Christina.cui 12/27/07
.X +/-	0.50	CHECKED	lsh.wang 12/27/07
.XX +/-	0.30	CHECKED	
.XXX +/-	0.20		
FRACTIONS +/-	2'		
ANGLES +/-			
FOR MATERIALS AND FINISHES SEE NOTES		DRAWING FILE :	
REMOVE SHARP EDGES		ANGLE OF PROJECTION	
DIMENSIONS			
U.S.	INCHES		
METRIC	MM		

Amphenol

TITLE  
machined contacts connector, DF series

SIZE	DRAWING NO.	REV.
A4	C L77DFXXXS	1
SCALE	SHEET 1 OF 1	
NONE		

# Mouser Electronics

Authorized Distributor

Click to View Pricing, Inventory, Delivery & Lifecycle Information:

[Amphenol:](#)

[L77DFB25S](#) [L77DFA15S](#) [L77DFE09S](#) [L77DFC37S](#)