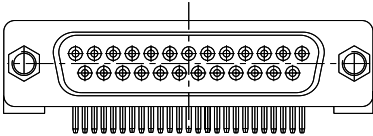
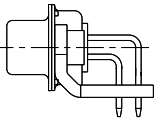
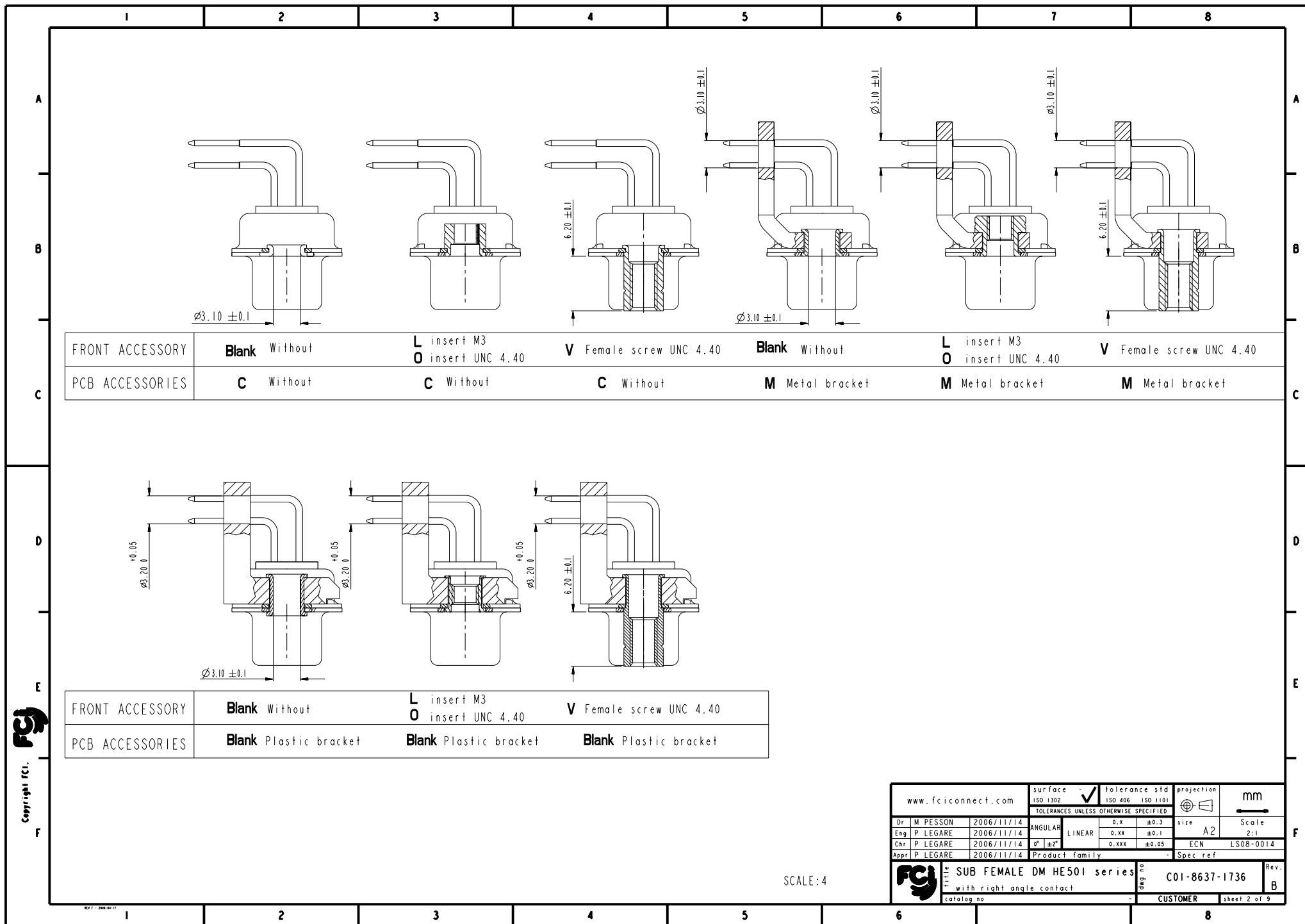


	1	2	3	4	5	6	7	8																																																																																																																									
A	<u>REFERENCE SPECIFICATIONS</u> -NFC 93425 (in compliance with HE 501)			Series → DBML25S500M					A																																																																																																																								
B	<u>PHYSICAL CHARACTERISTICS</u> -INSULATOR MATERIAL: THERMOPLASTIC UL94V0 -CONTACT MATERIAL: PHOSPHOR BRONZE, GOLD OVER NICKEL -ACCESSORIES: STEEL FOR METAL BRACKETS, cadmium plated yellow passivation THERMOPLASTIC UL94V0 FOR PLASTIC BRACKETS BRASS FOR OTHERS ACCESSORIES, cadmium plated yellow passivation -SHELLS: STEEL, cadmium plated yellow passivation			Shell size: E A B C D → (see sheet 3) Front accessory definition → (see sheet 2) Blank :without accessory L :threaded insert M3 O :threaded insert UNC 4-40 V :female screw UNC 4-40					B																																																																																																																								
C	<u>ELECTRICAL CHARACTERISTICS</u> -NOMINAL CURRENT: 7.5A -CONTACT RESISTANCE: <=7.3 m Ohms -CONTACT/CONTACT : >=1000 V -CONTACT/GROUND : >=1200 V -INSULATION RESISTANCE: >=5000 MOhms			Layout of contacts (see sheet 3) → 9,15,25,37,50 Contacts → S :Socket Termination type → 5 Right angle/Europe standard					C																																																																																																																								
D	<u>ENVIRONMENTAL CHARACTERISTICS</u> - CLIMATIC CATEGORY: 55/125/56 TEMPERATURE RANGE -55°C TO +125°C DAMP HEAT STEADY STATE 56 DAYS SALT SPRAY 48 HOURS			Plating → 00 Right angle 500 matings/unmatings 43 Right angle 500 matings/unmatings for harsh environment PCB accessories definition(see sheet 2) → Blank :Plastic brackets C :Without brackets M :Metal brackets					D																																																																																																																								
E	<u>MECHANICAL CHARACTERISTICS</u> RETENTION AGAINST TORQUE: -Threaded insert:0.7 N.m min -Female screw:0.5 N.m min			 25 WAY for Example 					E																																																																																																																								
F				<table><tr><td colspan="4">www.fciconnect.com</td><td colspan="2">surface -</td><td colspan="2">tolerance std</td><td colspan="2">projection</td><td colspan="2">mm</td></tr><tr><td colspan="4"></td><td colspan="2">ISO 1302</td><td colspan="2">ISO 406</td><td colspan="2">ISO 1101</td><td colspan="2"></td></tr><tr><td colspan="4"></td><td colspan="8">TOLERANCES UNLESS OTHERWISE SPECIFIED</td></tr><tr><td colspan="4"></td><td colspan="2">ANGULAR</td><td colspan="2">0.X</td><td colspan="2">±0.3</td><td colspan="2">size A2</td></tr><tr><td colspan="4"></td><td colspan="2">LINEAR</td><td colspan="2">0.XX</td><td colspan="2">±0.1</td><td colspan="2">Scale 2:1</td></tr><tr><td colspan="4"></td><td colspan="2">0° ±2°</td><td colspan="2">0.XXX</td><td colspan="2">±0.05</td><td colspan="2">ECN LS08-0014</td></tr><tr><td colspan="4"></td><td colspan="2">Product family</td><td colspan="2"></td><td colspan="2">Spec ref</td><td colspan="2"></td></tr><tr><td colspan="4"></td><td colspan="2">SUB FEMALE DM HE501 series</td><td colspan="2"></td><td colspan="2">C01-8637-1736</td><td colspan="2">Rev. B</td></tr><tr><td colspan="4"></td><td colspan="2">with right angle contact</td><td colspan="2"></td><td colspan="2"></td><td colspan="2"></td></tr><tr><td colspan="4"></td><td colspan="2">catalog no</td><td colspan="2"></td><td colspan="2">CUSTOMER</td><td colspan="2">sheet 1 of 9</td></tr></table>					www.fciconnect.com				surface -		tolerance std		projection		mm						ISO 1302		ISO 406		ISO 1101								TOLERANCES UNLESS OTHERWISE SPECIFIED												ANGULAR		0.X		±0.3		size A2						LINEAR		0.XX		±0.1		Scale 2:1						0° ±2°		0.XXX		±0.05		ECN LS08-0014						Product family				Spec ref								SUB FEMALE DM HE501 series				C01-8637-1736		Rev. B						with right angle contact												catalog no				CUSTOMER		sheet 1 of 9		F
www.fciconnect.com				surface -		tolerance std		projection		mm																																																																																																																							
				ISO 1302		ISO 406		ISO 1101																																																																																																																									
				TOLERANCES UNLESS OTHERWISE SPECIFIED																																																																																																																													
				ANGULAR		0.X		±0.3		size A2																																																																																																																							
				LINEAR		0.XX		±0.1		Scale 2:1																																																																																																																							
				0° ±2°		0.XXX		±0.05		ECN LS08-0014																																																																																																																							
				Product family				Spec ref																																																																																																																									
				SUB FEMALE DM HE501 series				C01-8637-1736		Rev. B																																																																																																																							
				with right angle contact																																																																																																																													
				catalog no				CUSTOMER		sheet 1 of 9																																																																																																																							
	1	2	3	4	5	6	7	8																																																																																																																									

Copyright FCi

REV 7 - 2006-09-17



	1	2	3	4	5	6	7	8
A								
B								
C								
D								
E								
F								

PART NUMBER	FRONT ACCESSORY	PCB ACCESSORY
D*MxxS500C	without	without
D*MLxxS500C	insert M3	without
D*MOxxS500C	insert UNC 4.40	without
D*MVxxS500C	female screw UNC 4.40	without
D*MxxS500M	without	Metal bracket
D*MLxxS500M	insert M3	Metal bracket
D*MOxxS500M	insert UNC 4.40	Metal bracket
D*MVxxS500M	female screw UNC 4.40	Metal bracket
D*MxxS500	without	Plastic bracket
D*MLxxS500	insert M3	Plastic bracket
D*MOxxS500	insert UNC 4.40	Plastic bracket
D*MVxxS500	female screw UNC 4.40	Plastic bracket

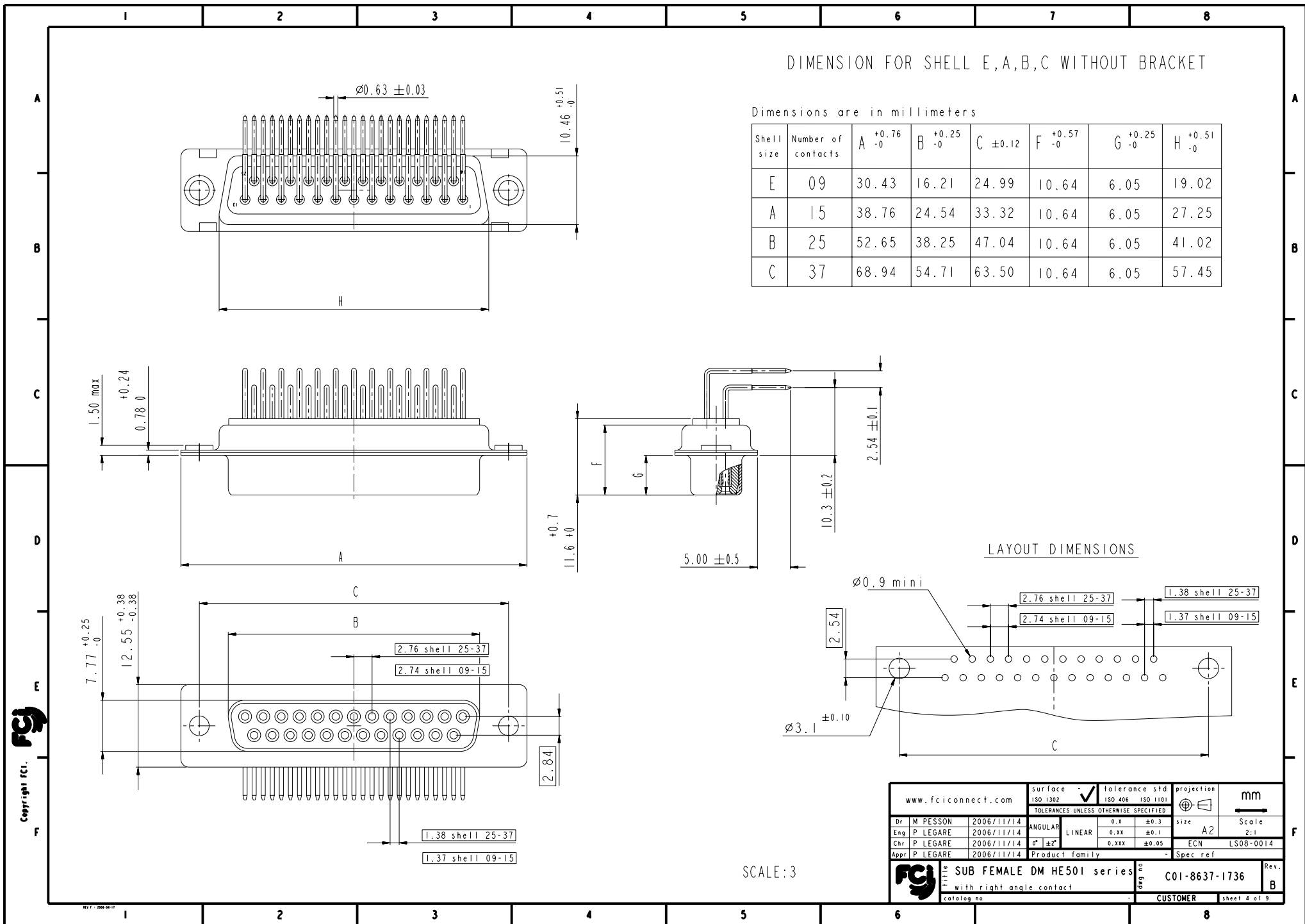
PART NUMBER	FRONT ACCESSORY	PCB ACCESSORY
D*MxxS543C	without	without
D*MLxxS543C	insert M3	without
D*MOxxS543C	insert UNC 4.40	without
D*MVxxS543C	female screw UNC 4.40	without
D*MxxS543M	without	Metal bracket
D*MLxxS543M	insert M3	Metal bracket
D*MOxxS543M	insert UNC 4.40	Metal bracket
D*MVxxS543M	female screw UNC 4.40	Metal bracket
D*MxxS543	without	Plastic bracket
D*MLxxS543	insert M3	Plastic bracket
D*MOxxS543	insert UNC 4.40	Plastic bracket
D*MVxxS543	female screw UNC 4.40	Plastic bracket

HE501 P/N	FCI P/N	FRONT ACCESSORY	PCB ACCESSORY
HE501PxxVS6	D*MxxS500	without	Plastic bracket
HE501MxxVS6	D*MxxS500M	without	Metal bracket

surface	tolerance std	projection	mm
ISO 1302	ISO 406 ISO 1101		
TOLERANCES UNLESS OTHERWISE SPECIFIED			
Dr M PESSON	2006/11/14	ANGULAR	0.X ±0.3
Eng P LEGARE	2006/11/14	LINEAR	0.XX ±0.1
Chr P LEGARE	2006/11/14	0° ±2°	0.XXX ±0.05
Appr P LEGARE	2006/11/14	Product family	- Spec ref

FCI	title	deg no	Rev.
	SUB FEMALE DM HE501 series		C01-8637-1736
	with right angle contact		B
	catalog no		CUSTOMER

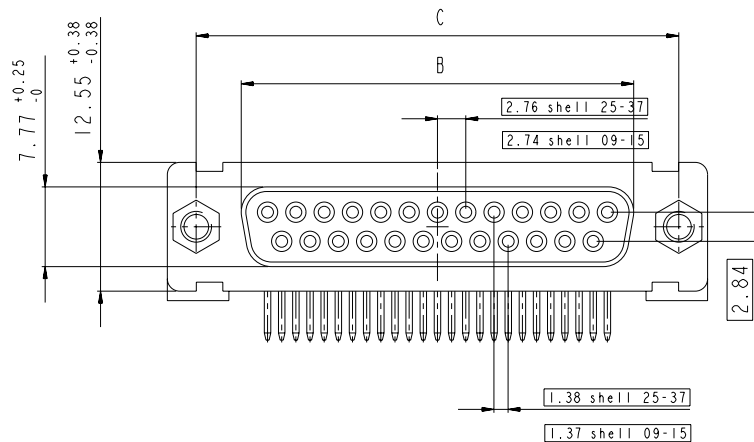
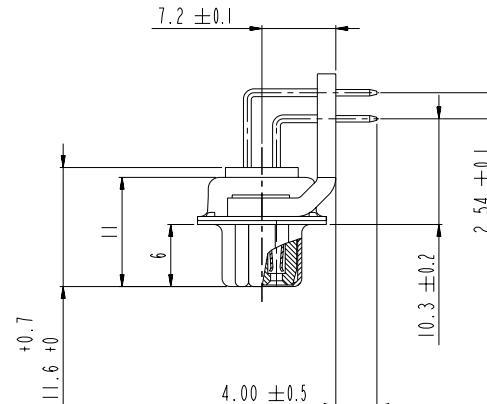
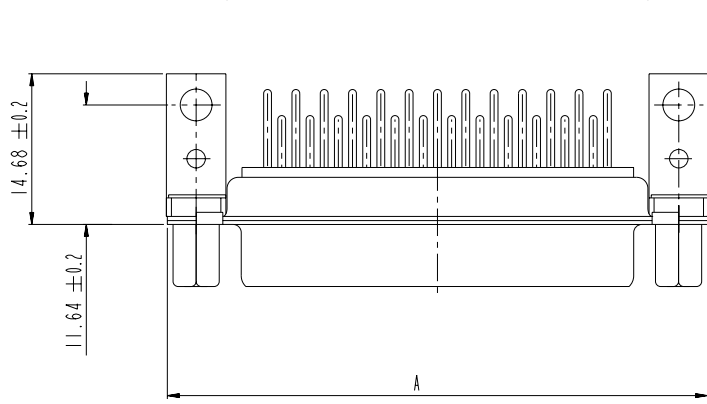
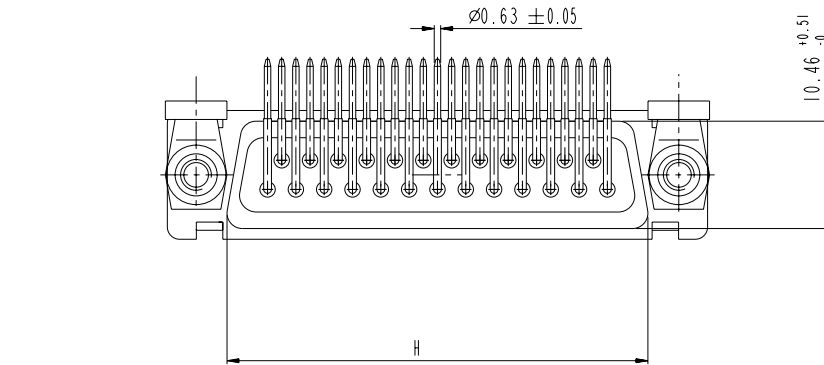
1	2	3	4	5	6	7	8
REV 7 - 2006-09-17							



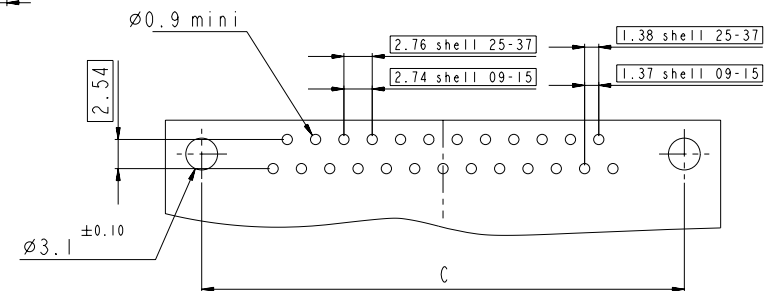
DIMENSION FOR SHELL E,A,B,C WITH METAL BRACKET

Dimensions are in millimeters




Shell size	Number of contacts	A ^{+0.76 -0}	B ^{+0.25 -0}	C ^{±0.12}	F ^{+0.57 -0}	G ^{+0.25 -0}	H ^{+0.51 -0}
E	09	30.43	16.21	24.99	10.64	6.05	19.02
A	15	38.76	24.54	33.32	10.64	6.05	27.25
B	25	52.65	38.25	47.04	10.64	6.05	41.02
C	37	68.94	54.71	63.50	10.64	6.05	57.45

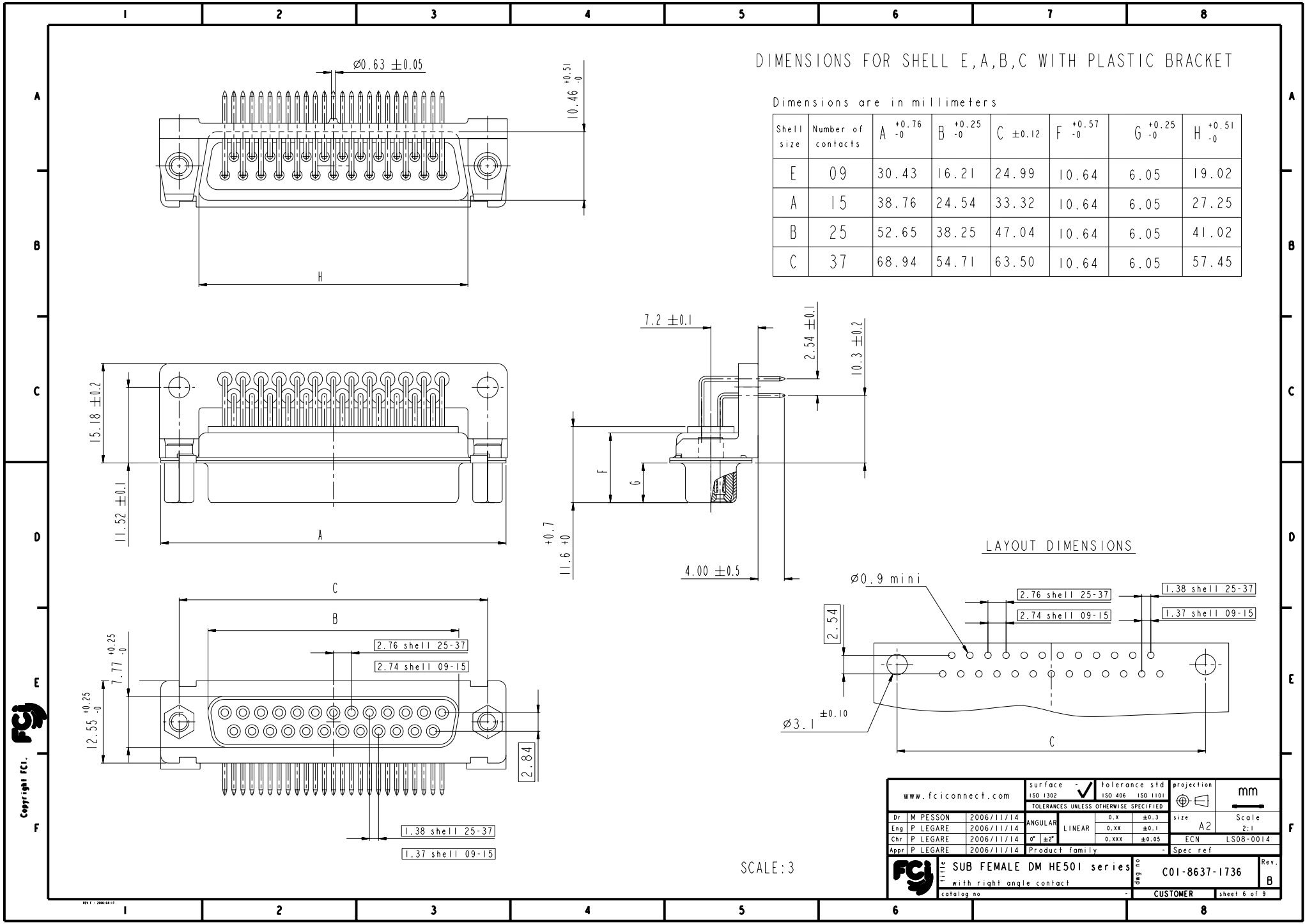


LAYOUT DIMENSIONS



SCALE: 3

www.fciconnect.com			surface - <input checked="" type="checkbox"/> tolerance std ISO 1302 ISO 406 ISO 1101			projection 		mm 	
TOLERANCES UNLESS OTHERWISE SPECIFIED									
Dr	M PESSON	2006/11/14	ANGULAR	LINEAR	0.X	±0.3	size A2	Scale 2:1	ECN LS08-0014
Eng	P LEGARE	2006/11/14			0.XX	±0.1			
Chr	P LEGARE	2006/11/14	0° ±2°	0.XXX	±0.05				
Appr	P LEGARE	2006/11/14	Product family			Spec ref			
			SUB FEMALE DM HE501 series				C01-8637-1736		Rev. B
with right angle contact			deg no						
catalog no			CUSTOMER				sheet 5 of 9		

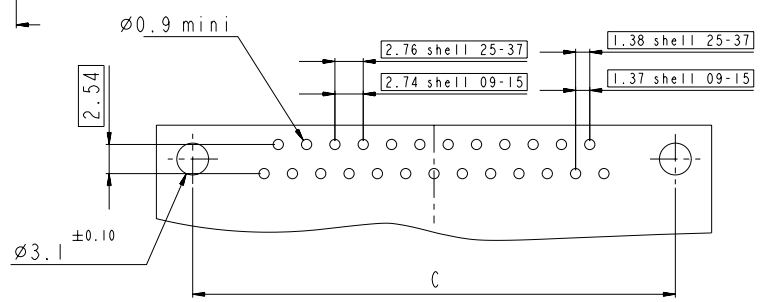


DIMENSIONS FOR SHELL E,A,B,C WITH PLASTIC BRACKET

Dimensions are in millimeters

Shell size	Number of contacts	A ^{+0.76 -0}	B ^{+0.25 -0}	C ^{±0.12}	F ^{+0.57 -0}	G ^{+0.25 -0}	H ^{+0.51 -0}
E	09	30.43	16.21	24.99	10.64	6.05	19.02
A	15	38.76	24.54	33.32	10.64	6.05	27.25
B	25	52.65	38.25	47.04	10.64	6.05	41.02
C	37	68.94	54.71	63.50	10.64	6.05	57.45

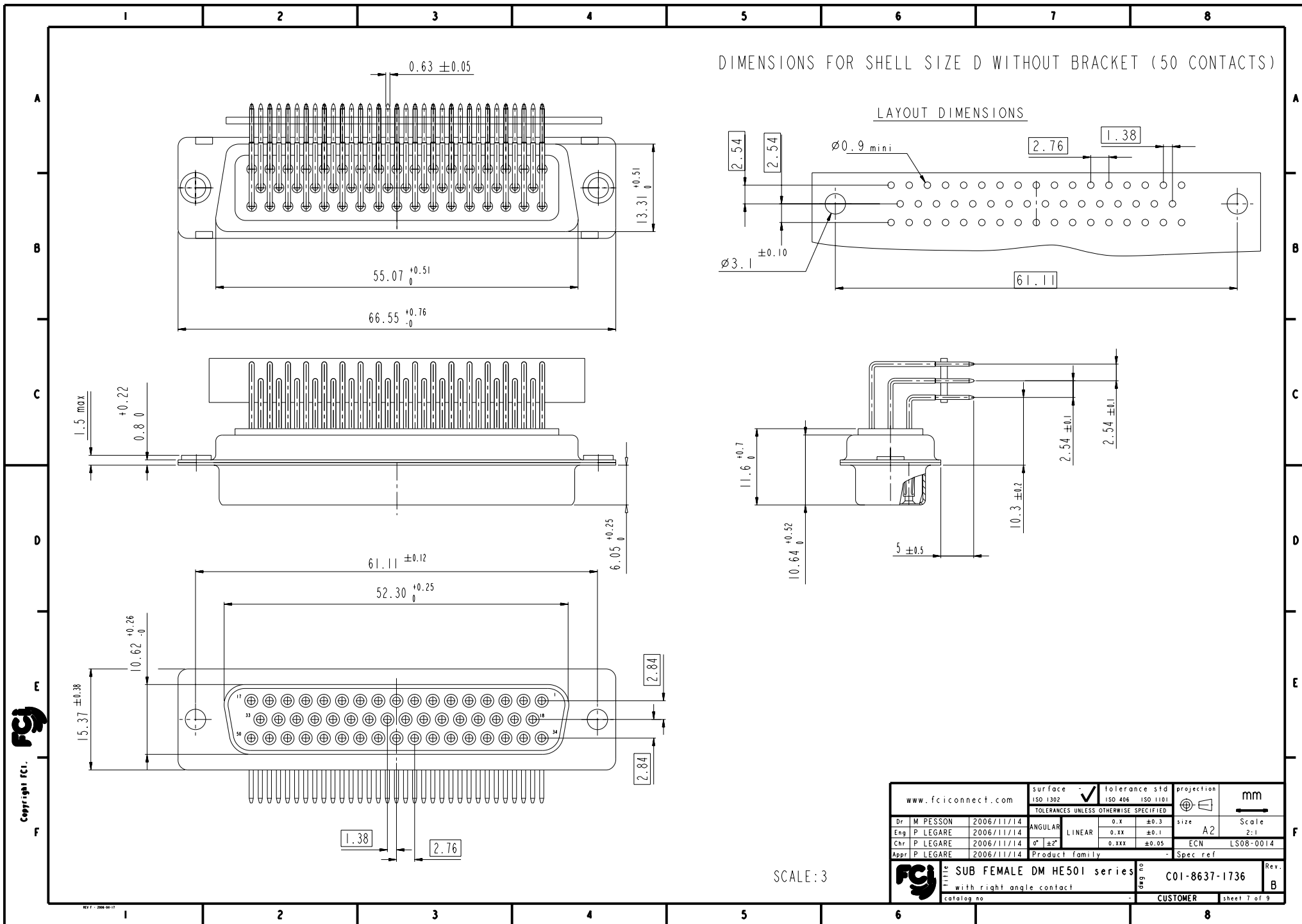
LAYOUT DIMENSIONS

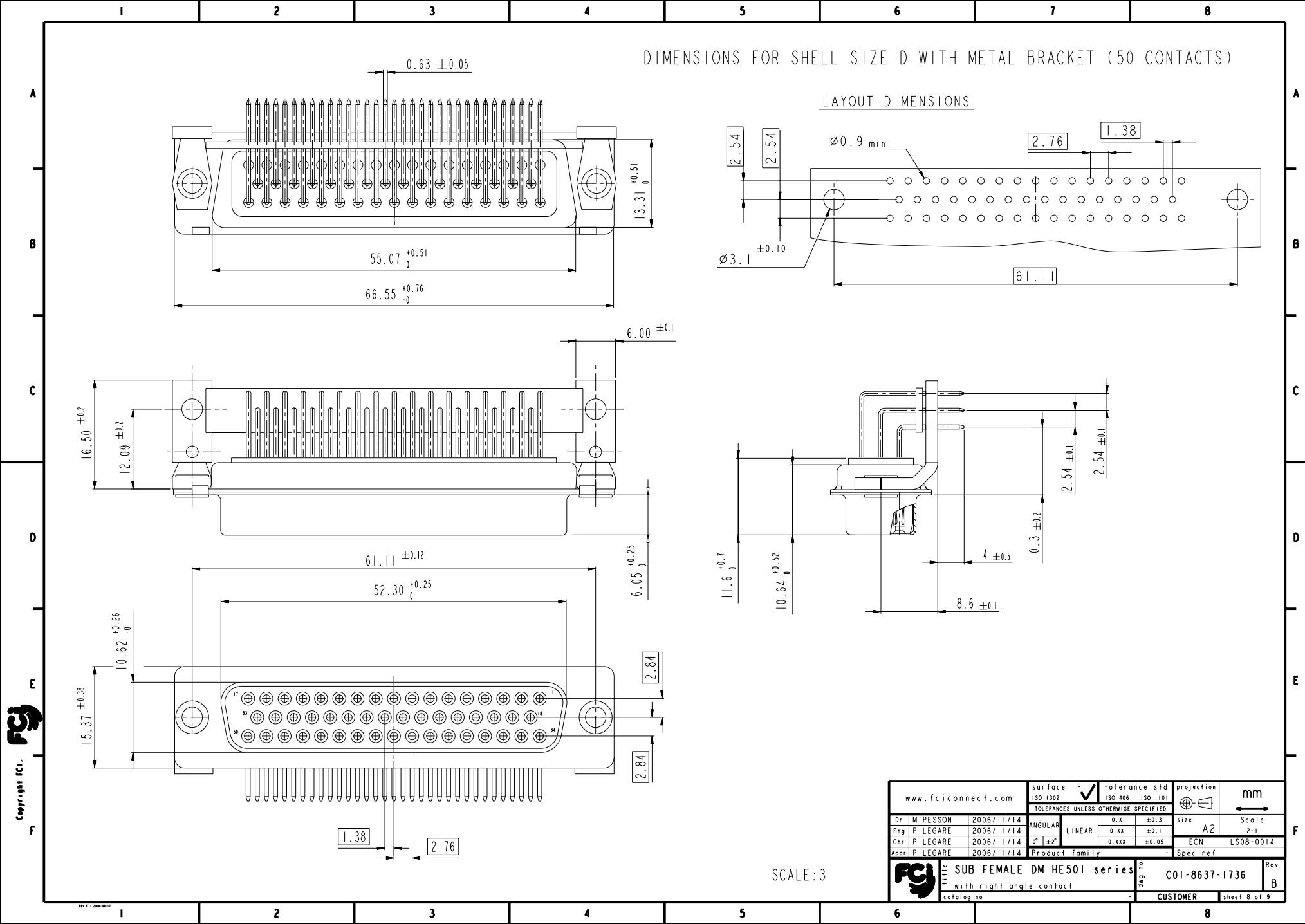


SCALE: 3




www.fciconnect.com		surface	ISO 1302	tolerance std	ISO 406	ISO 1101	projection	mm
		TOLERANCES UNLESS OTHERWISE SPECIFIED						
Dr	M PESSON	2006/11/14	ANGULAR	0.X	±0.3		size	A2
Eng	P LEGARE	2006/11/14	LINEAR	0.XX	±0.1		Scale	2:1
Chr	P LEGARE	2006/11/14	0° ±2°	0.XXX	±0.05		ECN	LS08-0014
Appr	P LEGARE	2006/11/14	Product family					
		Title		SUB FEMALE DM HE501 series		Spec ref		
		with right angle contact		C01-8637-1736		Rev.		B
		catalog no		CUSTOMER		sheet 6 of 9		

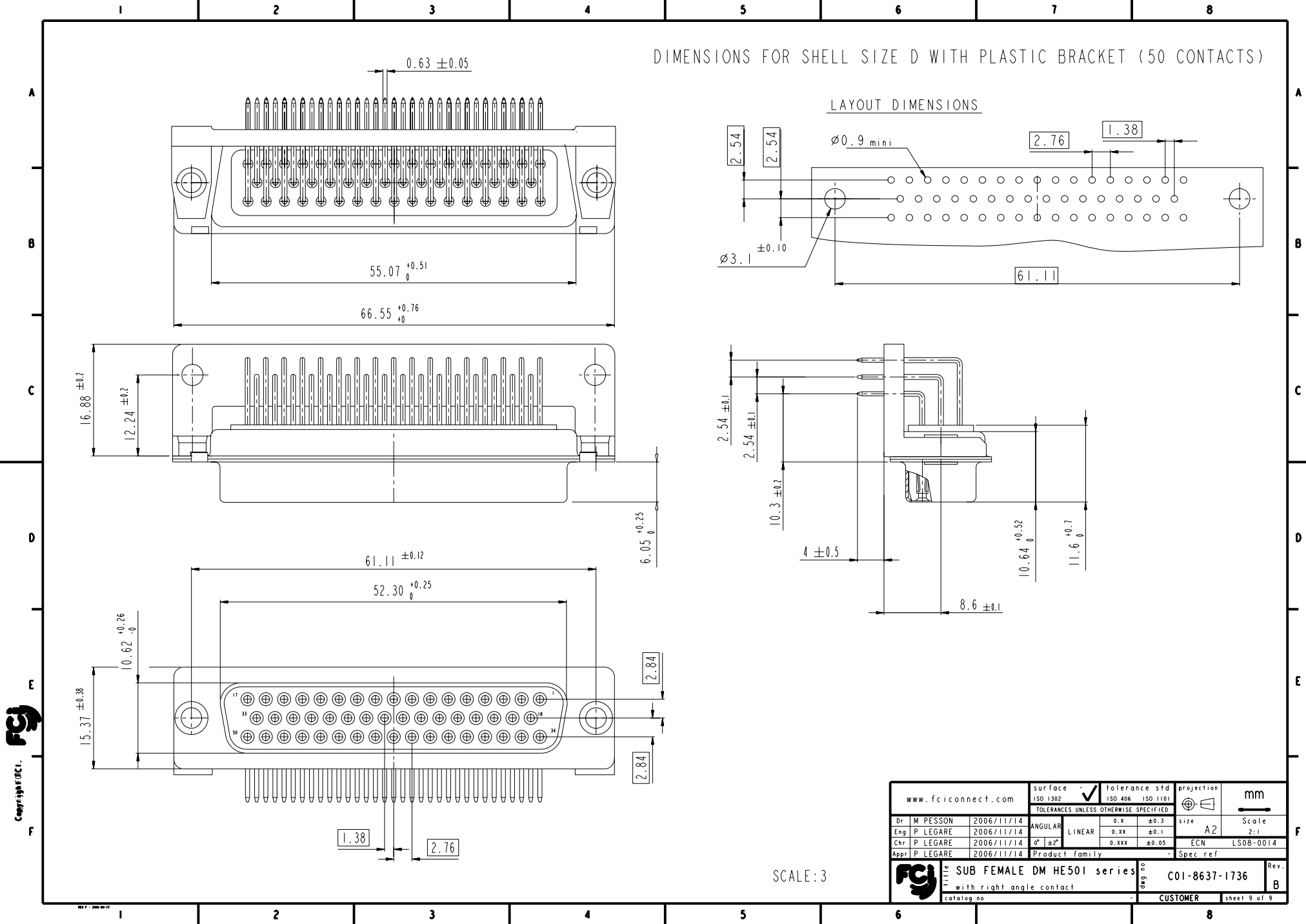
Copyright fci.





SCALE:3

www.fciconnect.com			surface - <input checked="" type="checkbox"/> tolerance std ISO 1302 ISO 406 ISO 1101		projection 		mm 		
TOLERANCES UNLESS OTHERWISE SPECIFIED									
Dr	M PESSON	2006/11/14	ANGULAR	LINEAR	0.X	±0.3	size A2	Scale 2:1	
Eng	P LEGARE	2006/11/14			0.XX	±0.1			
Chr	P LEGARE	2006/11/14	0° ±2°		0.XXX	±0.05	ECN	LS08-0014	
Appr	P LEGARE	2006/11/14	Product family			Spec ref			
			SUB FEMALE DM HE501 series				C01-8637-1736		Rev. B
with right angle contact									
catalog no			CUSTOMER				sheet 8 of 9		



SCALE: 3

www.fciconnect.com		surface	ISO 1302	tolerance std	ISO 406	ISO 1101	projection	mm
		TOLERANCES UNLESS OTHERWISE SPECIFIED						
Dr	M. PESSON	2006/11/14	ANGULAR	0.X	±0.3	size	A2	Scale
Eng	P. LEGARE	2006/11/14	LINEAR	0.XX	±0.1	ECN	LS08-0014	2:1
Chr	P. LEGARE	2006/11/14	0° ±2°	0.XXX	±0.05	Product family	-	Spec. ref
Appr	P. LEGARE	2006/11/14				Sub title	SUB FEMALE DM HE501 series	Rev.
							C01-8637-1736	B
							CUSTOMER	sheet 9 of 9