

UM-ALU 4-72 COVERLID 75 AL - Lateral element



2202085

<https://www.phoenixcontact.com/us/products/2202085>

Please be informed that the data shown in this PDF document is generated from our online catalog. Please find the complete data in the user documentation. Our general terms of use for downloads are valid.

Press-drawn section housings, Screw mounting, Side elements (left and right) incl. snap-on foot and screws for profile cover UM-ALU 4 AU..L..., width: 75.4 mm, height: 2 mm, depth: 73.5 mm



Your advantages

- Aluminum extruded profile
- Variety of connection technology
- Can be mounted on the DIN rail
- Available in lengths from 42.5 mm ... 990 mm, can be cut to any length
- Available in overall widths of 75 mm and 105 mm
- EMC protection

Commercial data

Item number	2202085
Packing unit	1 pc
Minimum order quantity	1 pc
Product key	ACHDFC
GTIN	4046356987424
Weight per piece (including packing)	68.1 g
Weight per piece (excluding packing)	68.1 g
Country of origin	HU

UM-ALU 4-72 COVERLID 75 AL - Lateral element



2202085

<https://www.phoenixcontact.com/us/products/2202085>

Technical data

Product properties

Product type	Panel mounting base side part
Housing type	Press-drawn section housings
Housing series	UM-ALU
Product family	UM-ALU 4-72
Type	Side elements (left and right) incl. snap-on foot and screws for profile cover UM-ALU 4 AU..L..

Dimensions

Width	75.4 mm
Height	2 mm
Depth	73.5 mm

Material specifications

Color (Housing)	aluminum
Housing material	Aluminum
Surface characteristics	anodized

Environmental and real-life conditions

Ambient conditions

Max. IP code to attain	IP40
Ambient temperature (operation)	-40 °C ... 105 °C (depending on power dissipation)
Ambient temperature (storage/transport)	-40 °C ... 55 °C
Ambient temperature (assembly)	-5 °C ... 100 °C

Mounting

Mounting type	Screw mounting
Tightening torque / speed	Screw connection with header/profile cover: 0.8 Nm-1 Nm / rpm-rpm

Packaging specifications

Type of packaging	packed in cardboard
Outer packaging type	Carton

UM-ALU 4-72 COVERLID 75 AL - Lateral element

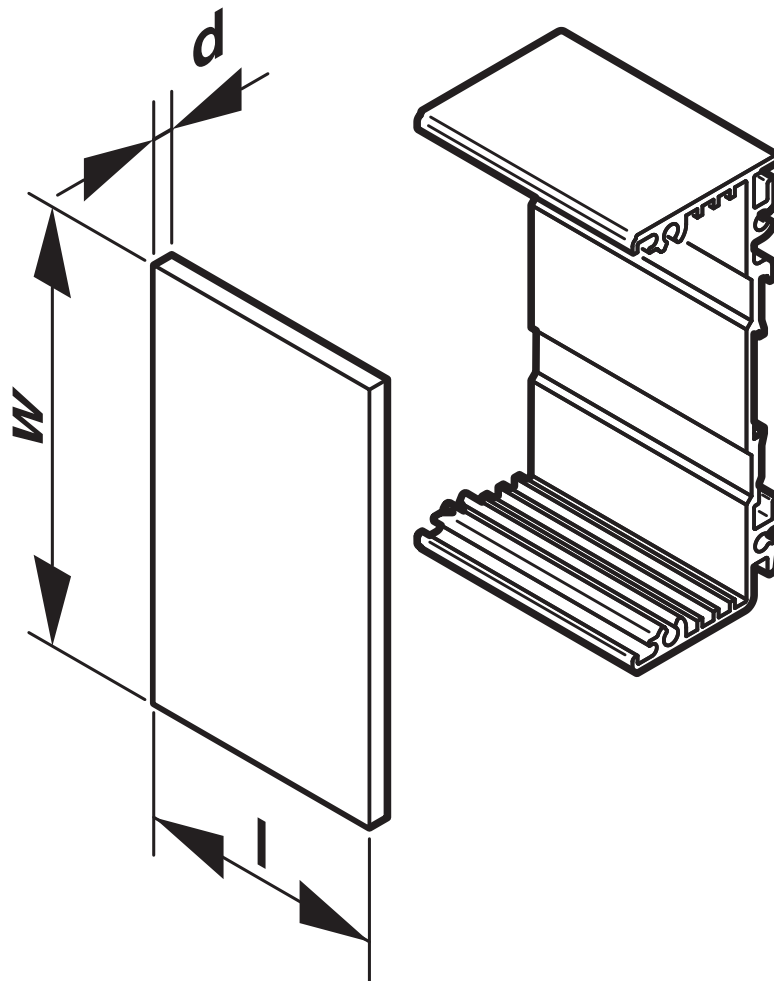
2202085

<https://www.phoenixcontact.com/us/products/2202085>



Drawings

Schematic diagram



UM-ALU 4-72 COVERLID 75 AL - Lateral element



2202085

<https://www.phoenixcontact.com/us/products/2202085>

Classifications

ECLASS

ECLASS-11.0	27182701
ECLASS-13.0	27190602

ETIM

ETIM 9.0	EC002779
----------	----------

UNSPSC

UNSPSC 21.0	31261500
-------------	----------

UM-ALU 4-72 COVERLID 75 AL - Lateral element



2202085

<https://www.phoenixcontact.com/us/products/2202085>

Environmental product compliance

EU RoHS	
Fulfills EU RoHS substance requirements	Yes, No exemptions
China RoHS	
Environment friendly use period (EFUP)	EFUP-E
	No hazardous substances above the limits
EU REACH SVHC	
REACH candidate substance (CAS No.)	No substance above 0.1 wt%

UM-ALU 4-72 COVERLID 75 AL - Lateral element



2202085

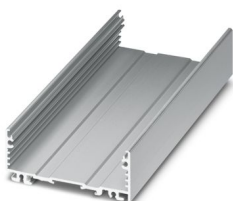
<https://www.phoenixcontact.com/us/products/2202085>

Accessories

UM-ALU 4-72 PROFILE 42,5 - Profile

2200917

<https://www.phoenixcontact.com/us/products/2200917>

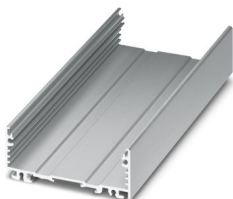


Press-drawn section housings, Screw mounting, Basic profile, profile width (internal): 72 mm, profile width (external): 75 mm, length: 42.5 mm, depth: 29.4 mm

UM-ALU 4-72 PROFILE 60 - Profile

2200918

<https://www.phoenixcontact.com/us/products/2200918>



Press-drawn section housings, Screw mounting, Basic profile, profile width (internal): 72 mm, profile width (external): 75 mm, length: 60 mm, depth: 29.4 mm

UM-ALU 4-72 COVERLID 75 AL - Lateral element



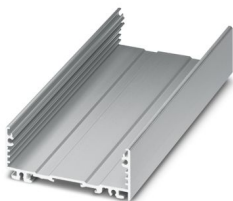
2202085

<https://www.phoenixcontact.com/us/products/2202085>

UM-ALU 4-72 PROFILE 95 - Profile

2200919

<https://www.phoenixcontact.com/us/products/2200919>

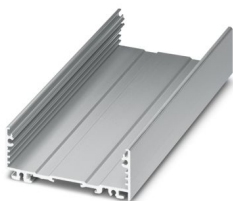


Press-drawn section housings, Screw mounting, Basic profile, profile width (internal): 72 mm, profile width (external): 75 mm, length: 95 mm, depth: 29.4 mm

UM-ALU 4-72 PROFILE 130 - Profile

2200920

<https://www.phoenixcontact.com/us/products/2200920>



Press-drawn section housings, Screw mounting, Basic profile, profile width (internal): 72 mm, profile width (external): 75 mm, length: 130 mm, depth: 29.4 mm

UM-ALU 4-72 COVERLID 75 AL - Lateral element



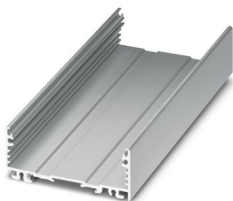
2202085

<https://www.phoenixcontact.com/us/products/2202085>

UM-ALU 4-72 PROFILE 165 - Profile

2200921

<https://www.phoenixcontact.com/us/products/2200921>

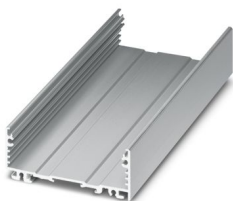


Press-drawn section housings, Screw mounting, Basic profile, profile width (internal): 72 mm, profile width (external): 75 mm, length: 165 mm, depth: 29.4 mm

UM-ALU 4-72 PROFILE 200 - Profile

2200922

<https://www.phoenixcontact.com/us/products/2200922>



Press-drawn section housings, Screw mounting, Basic profile, profile width (internal): 72 mm, profile width (external): 75 mm, length: 200 mm, depth: 29.4 mm

UM-ALU 4-72 COVERLID 75 AL - Lateral element



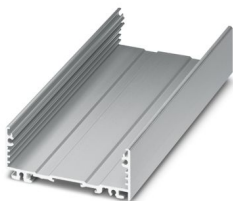
2202085

<https://www.phoenixcontact.com/us/products/2202085>

UM-ALU 4-72 PROFILE 235 - Profile

2200923

<https://www.phoenixcontact.com/us/products/2200923>

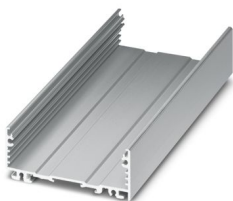


Press-drawn section housings, Screw mounting, Basic profile, profile width (internal): 72 mm, profile width (external): 75 mm, length: 235 mm, depth: 29.4 mm

UM-ALU 4-72 PROFILE 990 - Profile

2200924

<https://www.phoenixcontact.com/us/products/2200924>



Press-drawn section housings, Screw mounting, Basic profile, profile width (internal): 72 mm, profile width (external): 75 mm, length: 990 mm, depth: 29.4 mm

UM-ALU 4-72 COVERLID 75 AL - Lateral element



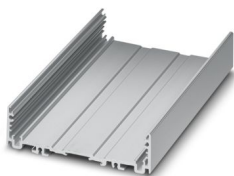
2202085

<https://www.phoenixcontact.com/us/products/2202085>

UM-ALU 4-72 PROFILE 111 - Profile

2201930

<https://www.phoenixcontact.com/us/products/2201930>

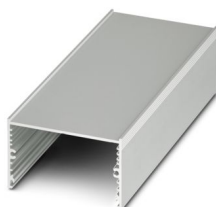


Press-drawn section housings, Screw mounting, Basic profile, profile width (internal): 72 mm, profile width (external): 75 mm, length: 111 mm, depth: 29.4 mm

UM-ALU 4 AU75 L42,5 - Profile cover

2200963

<https://www.phoenixcontact.com/us/products/2200963>



Press-drawn section housings, Screw mounting, Profile cover, width: 75.6 mm, profile width (internal): 71.5 mm, profile width (external): 75.6 mm, length: 42.5 mm, depth: 43.1 mm

UM-ALU 4-72 COVERLID 75 AL - Lateral element



2202085

<https://www.phoenixcontact.com/us/products/2202085>

UM-ALU 4 AU75 L60 - Profile cover

2200964

<https://www.phoenixcontact.com/us/products/2200964>



Press-drawn section housings, Screw mounting, Profile cover, width: 75.6 mm, profile width (internal): 71.5 mm, profile width (external): 75.6 mm, length: 60 mm, depth: 43.1 mm

UM-ALU 4 AU75 L95 - Profile cover

2200965

<https://www.phoenixcontact.com/us/products/2200965>



Press-drawn section housings, Screw mounting, Profile cover, width: 75.6 mm, profile width (internal): 71.5 mm, profile width (external): 75.6 mm, length: 95 mm, depth: 43.1 mm

UM-ALU 4-72 COVERLID 75 AL - Lateral element



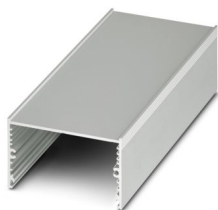
2202085

<https://www.phoenixcontact.com/us/products/2202085>

UM-ALU 4 AU75 L130 - Profile cover

2200966

<https://www.phoenixcontact.com/us/products/2200966>

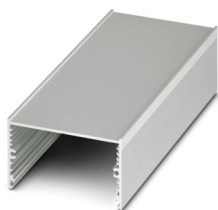


Press-drawn section housings, Screw mounting, Profile cover, width: 75.6 mm, profile width (internal): 71.5 mm, profile width (external): 75.6 mm, length: 130 mm, depth: 43.1 mm

UM-ALU 4 AU75 L165 - Profile cover

2200967

<https://www.phoenixcontact.com/us/products/2200967>



Press-drawn section housings, Screw mounting, Profile cover, width: 75.6 mm, profile width (internal): 71.5 mm, profile width (external): 75.6 mm, length: 165 mm, depth: 43.1 mm

UM-ALU 4-72 COVERLID 75 AL - Lateral element



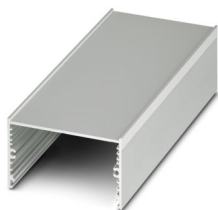
2202085

<https://www.phoenixcontact.com/us/products/2202085>

UM-ALU 4 AU75 L200 - Profile cover

2200968

<https://www.phoenixcontact.com/us/products/2200968>



Press-drawn section housings, Screw mounting, Profile cover, width: 75.6 mm, profile width (internal): 71.5 mm, profile width (external): 75.6 mm, length: 200 mm, depth: 43.1 mm

UM-ALU 4 AU75 L235 - Profile cover

2200969

<https://www.phoenixcontact.com/us/products/2200969>



Press-drawn section housings, Screw mounting, Profile cover, width: 75.6 mm, profile width (internal): 71.5 mm, profile width (external): 75.6 mm, length: 235 mm, depth: 43.1 mm

UM-ALU 4-72 COVERLID 75 AL - Lateral element



2202085

<https://www.phoenixcontact.com/us/products/2202085>

UM-ALU 4 AU75 L990 - Profile cover

2200970

<https://www.phoenixcontact.com/us/products/2200970>



Press-drawn section housings, Screw mounting, Profile cover, width: 75.6 mm, profile width (internal): 71.5 mm, profile width (external): 75.6 mm, length: 990 mm, depth: 43.1 mm

Phoenix Contact 2024 © - all rights reserved

<https://www.phoenixcontact.com>

Phoenix Contact USA
586 Fulling Mill Road
Middletown, PA 17057, United States
(+717) 944-1300
info@phoenixcon.com