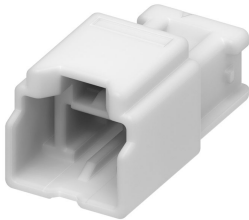




Part Number : [2137192020](#)
Product Description : 2.00mm Pitch, Micro-Lock Plus Plug Crimp Housing, Single Row, 2 Circuits, UL 94V-0, Natural
Series Number : 213719
Status : Active
Product Category : Connector Housings



Documents & Resources

Drawings

[Drawing 2137192020_sd.pdf](#)

3D Models and Design Files

- [2D Drawing DXF 2137192020.dxf](#)
- [2D Drawing DXF \(PDF\) 2137192020.pdf](#)
- [3D Model 2137192020_stp.zip](#)

Specifications

- [Application Specification 5055700001-A03.pdf](#)
- [Packaging Specification 2137199200-SPK-200.pdf](#)
- [Product Specification 5055700003-PS-000.pdf](#)

Product Environment Compliance

Compliance

GADSL/IMDS	Not Relevant
China RoHS	
EU ELV	Not Relevant
Low-Halogen Status	Low-Halogen per IEC 61249-2-21
REACH SVHC	Not Contained per D(2024)4144-DC (27 June 2024)
EU RoHS	Compliant per EU 2015/863

[Multiple Part Product Compliance Statements](#)

- Eu RoHS
- REACH SVHC
- Low-Halogen

[Multiple Part Industry Compliance Documents](#)

- IPC 1752A Class C
- IPC 1752A Class D
- Molex Product Compliance Declaration
- IEC-62474
- chemSHERPA (xml)

EU RoHS Certificate of Compliance

Part Details

General

Status	Active
Category	Connector Housings
Series	213719
Description	2.00mm Pitch, Micro-Lock Plus Plug Crimp Housing, Single Row, 2 Circuits, UL 94V-0, Natural
Application	Power, Wire-to-Wire
Product Family	Micro-Lock Connector System
Product Name	Micro-Lock Plus
UPC	193264756322

Agency

UL	E29179
----	--------

Physical

Circuits (maximum)	2
Color - Resin	Natural
Flammability	94V-0
Gender	Plug
Glow-Wire Capable	No
Keying to Mating Part	None
Lock to Mating Part	Yes
Material - Resin	Polyamide
Net Weight	1021.530/mg
Number of Rows	1
Packaging Type	Bag
Panel Mount	No

Pitch - Mating Interface	2.00mm
Polarized to Mating Part	Yes
Temperature Range - Operating	-40° to +105°C

Mates With / Use With

Mates with Part(s)

Description	Part Number
2.00mm Pitch, Micro-Lock Plus Single Row Receptacle Housings	<u>505570</u>

Use with Part(s)

Description	Part Number
Micro-Lock Plus Male Crimp Terminals	<u>213720</u>
