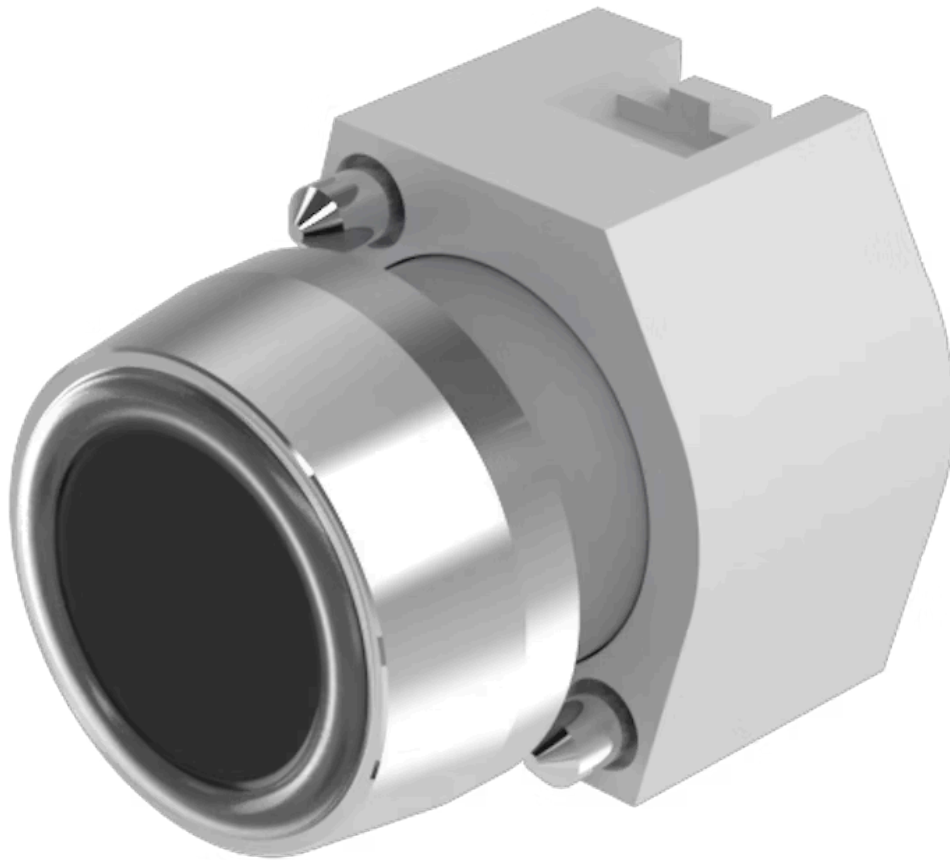


# Actuator

704.013.0

Distribution by  
DigiKey

**DigiKey**



<https://digikey.eao.com/p/704.013.0>

Your product:

---



## 704.013.0 Actuator

### FRONT

Front dimension:	Ø 29 mm
Front form:	round
Front bezel material:	Aluminium
Front bezel colour:	Nature

### MOUNTING

Design:	raised
---------	--------

### OPERATING-/INDICATION PART

Lens illumination:	non illuminative
Lens shape:	flush
Lens colour:	Black
Lens optics:	opaque
Lens material:	Plastic

### ELECTRICAL CHARACTERISTICS

Standards:	The switches comply with the "Standards for low-voltage switching devices" DIN EN 60947-1
------------	---

### MECHANICAL CHARACTERISTIC

Weight:	0.04 kg
Operating force:	8 N
Switching action:	Momentary

<b>Operating Travel:</b>	ca. 5.8 mm ± 0.2 mm
<b>Mechanical lifetime:</b>	≤3 Mio. cycles of operation

## AMBIENT CONDITION

<b>Operating temperature:</b>	– 40 °C ... + 55 °C
<b>Storage temperature:</b>	– 40 °C ... + 85 °C
<b>IP Protection:</b>	IP65 front side

## OTHER

<b>max. number of switching elements:</b>	3
---	---

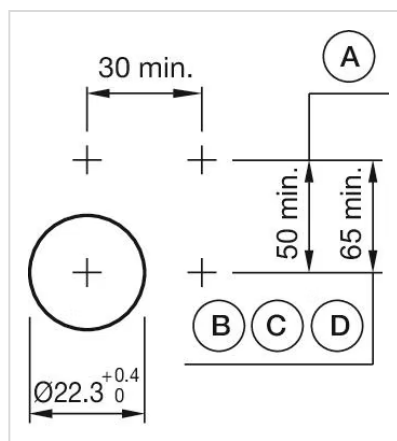
**Short Description:** Actuator, Ø 29 mm, flush, non illuminative, Black, Plastic, opaque, round, Nature, Aluminium, anodised, Momentary

**Housing colour:** Grey

**Housing material:** Plastic

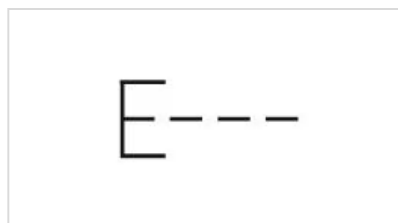
**Hints:** Frontring with protective cover to be mounted with a torque of 0.4 Nm onto actuator, Max. 3 switching elements can be clipped on

**Mounting cut-outs:**

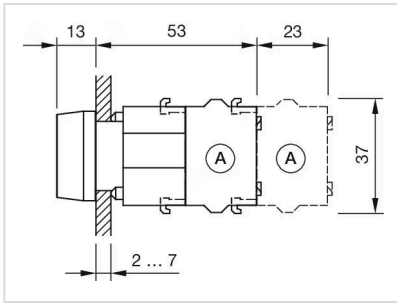


A = Screw terminal  
 B = Push-in terminal (PIT)  
 C = Plug-in terminal 6.3 mm x 0.8 mm  
 D = Double plug-in terminal 6.3 mm x 0.8 mm

**Wiring diagrams:**



**Dimension drawings:**



A = Screw terminal