

2735577

<https://www.phoenixcontact.com/us/products/2735577>

Please be informed that the data shown in this PDF document is generated from our online catalog. Please find the complete data in the user documentation. Our general terms of use for downloads are valid.



DIN rail housing, Lower housing part with metal foot catch, with FE contact, tall design, with vents, width: 45.2 mm, height: 99 mm, depth: 107.3 mm, cross connection: integrated bus connector, number of positions cross connector: 5+2, Bus connector: 5 parallel contacts, 2 serial contacts

Your advantages

- Can be mounted on the DIN rail
- With integrated or DIN-rail-mountable bus connector as an option

Commercial data

| | |
|--------------------------------------|--------------------------------|
| Item number | 2735577 |
| Packing unit | 1 pc |
| Note | Made to order (non-returnable) |
| Sales key | NULL |
| Product key | ACHAAB |
| Catalog page | Page 664 (C-1-2013) |
| GTIN | 4017918601690 |
| Weight per piece (including packing) | 77.8 g |
| Weight per piece (excluding packing) | 62.724 g |
| Customs tariff number | 85369010 |
| Country of origin | DE |

ME 45 UT/FE BUS/ 5+2 GN - Mounting base housing



2735577

<https://www.phoenixcontact.com/us/products/2735577>

Technical data

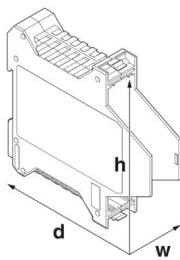
Notes

| | |
|----------------|---|
| Assembly note | Refer to the data sheet for the range in the download area. |
| Recommendation | Material of contact pads for bus connector, galvanic gold (hard gold) |

Product properties

| | |
|------------------------------|--|
| Product type | Enclosure bottom part |
| Housing type | DIN rail housing |
| Housing series | ME |
| Type | Lower housing part with metal foot catch, with FE contact, tall design |
| Ventilation openings present | yes |

Dimensions

| | |
|--|--|
| Dimensional drawing |  |
| Width | 45.2 mm |
| Height | 99 mm |
| Depth | 107.3 mm |
| Depth from top edge of DIN rail | 100.7 mm |
| Depth from top edge of DIN rail to support point on upper part | 68.5 mm |

PCB design

| | |
|---------------|-------------------|
| PCB thickness | 1.4 mm ... 1.8 mm |
|---------------|-------------------|

Material specifications

| | |
|--|--------------|
| Color | green (6021) |
| Flammability rating according to UL 94 | V0 |
| CTI according to IEC 60112 | 600 |
| Housing material | Polyamide |
| Surface characteristics | untreated |

Environmental and real-life conditions

Power dissipation single housing for 20 °C

| | |
|---------------------|-------|
| Ambient temperature | 20 °C |
| Reduction factor | 1 |

ME 45 UT/FE BUS/ 5+2 GN - Mounting base housing



2735577

<https://www.phoenixcontact.com/us/products/2735577>

| | |
|-------------------|----------|
| Mounting position | vertical |
| Power dissipation | 8.2 W |

Power dissipation single housing for 30 °C

| | |
|---------------------|----------|
| Ambient temperature | 30 °C |
| Reduction factor | 0.91 |
| Mounting position | vertical |
| Power dissipation | 7.5 W |

Power dissipation single housing for 40 °C

| | |
|---------------------|----------|
| Ambient temperature | 40 °C |
| Reduction factor | 0.81 |
| Mounting position | vertical |
| Power dissipation | 6.6 W |

Power dissipation single housing for 50 °C

| | |
|---------------------|----------|
| Ambient temperature | 50 °C |
| Reduction factor | 0.7 |
| Mounting position | vertical |
| Power dissipation | 5.7 W |

Power dissipation single housing for 60 °C

| | |
|---------------------|----------|
| Ambient temperature | 60 °C |
| Reduction factor | 0.57 |
| Mounting position | vertical |
| Power dissipation | 4.7 W |

Power dissipation single housing for 70 °C

| | |
|---------------------|----------|
| Ambient temperature | 70 °C |
| Reduction factor | 0.49 |
| Mounting position | vertical |
| Power dissipation | 4 W |

Vibration test

| | |
|------------------------|-----------------------------|
| Specification | IEC 60068-2-6:2007-12 |
| Frequency | 10 - 150 - 10 Hz |
| Sweep speed | 1 octave/min |
| Amplitude | 0.15 mm (10 Hz ... 58.1 Hz) |
| Acceleration | 2g (58.1 Hz ... 150 Hz) |
| Test duration per axis | 2.5 h |
| Test directions | X-, Y- and Z-axis |

Glow-wire test

| | |
|------------------|------------------------|
| Specification | IEC 60695-2-11:2014-02 |
| Temperature | 850 °C |
| Time of exposure | 30 s |

Thermal stability / ball thrust test

ME 45 UT/FE BUS/ 5+2 GN - Mounting base housing



2735577

<https://www.phoenixcontact.com/us/products/2735577>

| | |
|---------------|------------------------|
| Specification | IEC 60695-10-2:2014-02 |
| Temperature | 125 °C |
| Test duration | 1 h |
| Force | 20 N |

Mechanical strength / tumbling barrel

| | |
|----------------|---------------------|
| Specification | IEC 60998-1:2002-12 |
| Height of fall | 50 cm |
| Frequency | 10 |

Shocks

| | |
|--------------------------------|-----------------------------------|
| Specification | IEC 60068-2-27:2008-02 |
| Pulse shape | Half-sine |
| Acceleration | 15g |
| Shock duration | 11 ms |
| Number of shocks per direction | 3 |
| Test directions | X-, Y- and Z-axis (pos. and neg.) |

Degree of protection (IP code)

| | |
|---------------|---|
| Specification | IEC 60529:1989-11 + AMD 1:1999-11 + AMD 2:2013-08 |
|---------------|---|

Ambient conditions

| | |
|---|--|
| Max. IP code to attain | IP20 |
| Ambient temperature (operation) | -40 °C ... 105 °C (depending on power dissipation) |
| Ambient temperature (storage/transport) | -40 °C ... 55 °C |
| Ambient temperature (assembly) | -5 °C ... 100 °C |
| Relative humidity (storage/transport) | 80 % |

PCB data

| | |
|-----------------------|---|
| Number of PCB holders | 2 |
| Type of PCB mount | Insertion (optional latching by PCB stop) |
| Thickness of the PCB | 1.4 mm ... 1.8 mm |

Mounting

| | |
|-------------------|--------------------------------|
| Mounting type | DIN rail mounting |
| Mounting position | Vertical (horizontal DIN rail) |

Packaging specifications

| | |
|----------------------|---------------------|
| Type of packaging | packed in cardboard |
| Outer packaging type | Carton |

ME 45 UT/FE BUS/ 5+2 GN - Mounting base housing

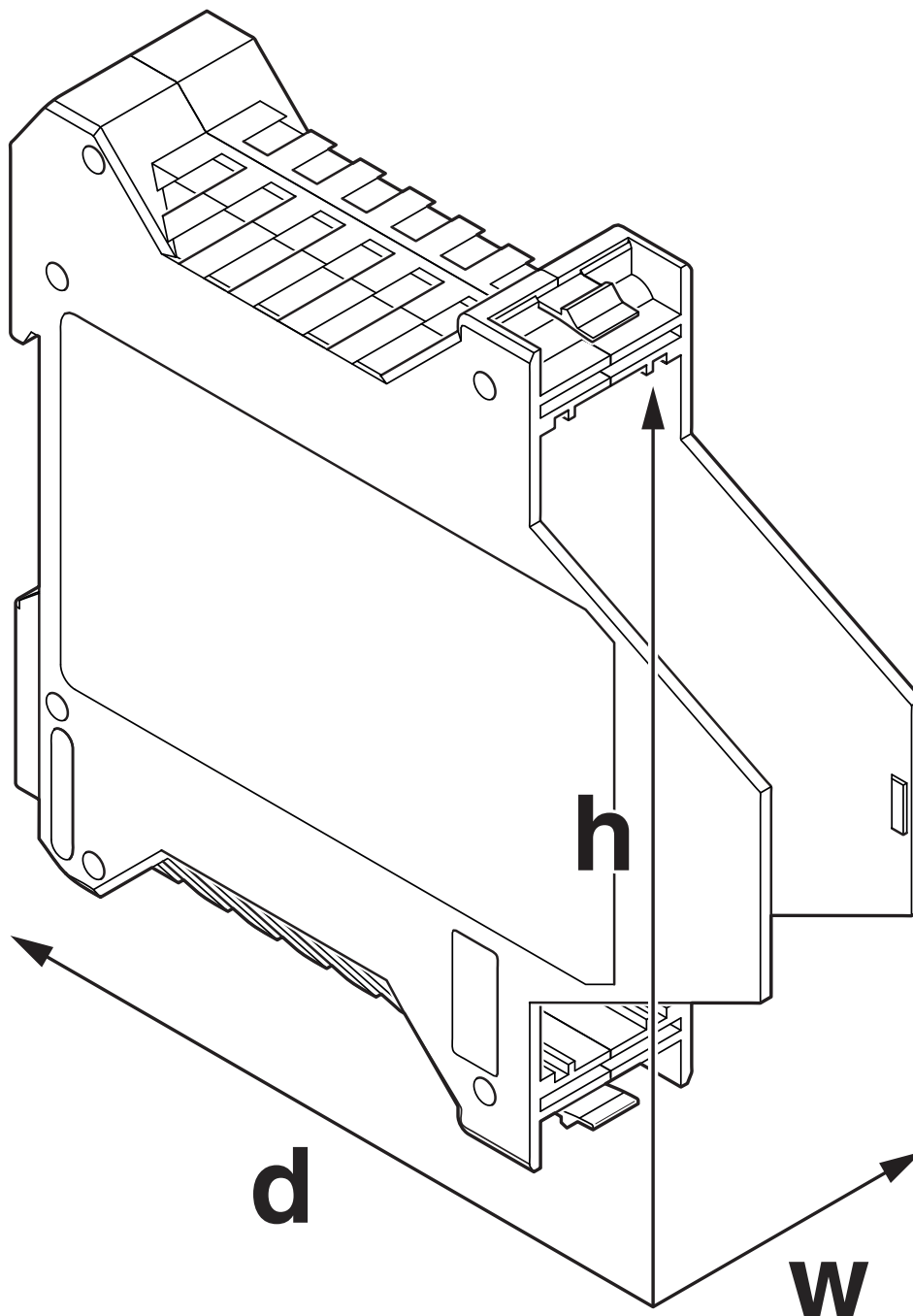
2735577

<https://www.phoenixcontact.com/us/products/2735577>



Drawings

Dimensional drawing



ME 45 UT/FE BUS/ 5+2 GN - Mounting base housing



2735577

<https://www.phoenixcontact.com/us/products/2735577>

Classifications

ECLASS

| | |
|-------------|----------|
| ECLASS-11.0 | 27182702 |
|-------------|----------|

UNSPSC

| | |
|-------------|----------|
| UNSPSC 21.0 | 31261501 |
|-------------|----------|

Environmental product compliance

| | |
|--|--|
| China RoHS | |
| Environment friendly use period (EFUP) | EFUP-E |
| | No hazardous substances above the limits |
| EU REACH SVHC | |
| REACH candidate substance (CAS No.) | No substance above 0.1 wt% |

ME 45 UT/FE BUS/ 5+2 GN - Mounting base housing



2735577

<https://www.phoenixcontact.com/us/products/2735577>

Mandatory accessories

ME 45 OT-1MSTBO GN - Upper housing part

2709192

<https://www.phoenixcontact.com/us/products/2709192>



DIN rail housing, Upper housing part for connectors with header, width: 45.2 mm, height: 99 mm, depth: 45.85 mm, color: green (similar RAL 6021)

ME 45 OT-MSTBO GN - Upper housing part

2909743

<https://www.phoenixcontact.com/us/products/2909743>



DIN rail housing, Upper housing part for connectors with header, width: 45.2 mm, height: 99 mm, depth: 45.85 mm, color: green (similar RAL 6021)

ME 45 UT/FE BUS/ 5+2 GN - Mounting base housing



2735577

<https://www.phoenixcontact.com/us/products/2735577>

ME 45 OTU-MKDSO GN - Upper housing part

2279826

<https://www.phoenixcontact.com/us/products/2279826>



DIN rail housing, Upper housing part for PCB terminal blocks with screw connection, width: 45.2 mm, height: 99 mm, depth: 45.85 mm, color: green (similar RAL 6021)

ME 22,5 OTU-MKDSO GN - Upper housing part

2278966

<https://www.phoenixcontact.com/us/products/2278966>



DIN rail housing, Upper housing part for PCB terminal blocks with screw connection, width: 22.6 mm, height: 99 mm, depth: 45.85 mm, color: green (similar RAL 6021)

ME 45 UT/FE BUS/ 5+2 GN - Mounting base housing



2735577

<https://www.phoenixcontact.com/us/products/2735577>

ME 45 OT-MKDSO GN - Upper housing part

2909390

<https://www.phoenixcontact.com/us/products/2909390>

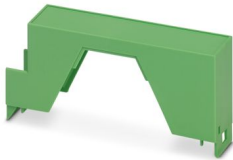


DIN rail housing, Upper housing part for PCB terminal blocks with screw connection, width: 45.2 mm, height: 99 mm, depth: 45.85 mm, color: green (similar RAL 6021)

ME 22,5 OT-1MSTBO GN - Upper housing part

2709558

<https://www.phoenixcontact.com/us/products/2709558>



DIN rail housing, Upper housing part for connectors with header, width: 22.6 mm, height: 99 mm, depth: 45.85 mm, color: green (similar RAL 6021)

ME 45 UT/FE BUS/ 5+2 GN - Mounting base housing



2735577

<https://www.phoenixcontact.com/us/products/2735577>

ME 22,5 OT-MSTBO GN - Upper housing part

2907169

<https://www.phoenixcontact.com/us/products/2907169>

DIN rail housing, Upper housing part for connectors with header, width: 22.6 mm, height: 99 mm, depth: 45.85 mm, color: green (similar RAL 6021)

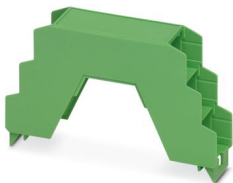


ME 22,5 OT-3MSTBO GN - Upper housing part

2735962

<https://www.phoenixcontact.com/us/products/2735962>

DIN rail housing, Upper housing part for connectors with header, width: 22.6 mm, height: 102 mm, depth: 60.15 mm, color: green (similar RAL 6021)



Accessories

ME 45 UT/FE BUS/ 5+2 GN - Mounting base housing



2735577

<https://www.phoenixcontact.com/us/products/2735577>

ME B-SA/NS 35 - Cover

2935959

<https://www.phoenixcontact.com/us/products/2935959>

Terminal cover, 1 strip covers up to 12 terminal points, for ME-BUS male side, (female side)



ME DH27 NS 35 - Spacer

2908760

<https://www.phoenixcontact.com/us/products/2908760>

Spacer, for protecting the input and output contacts for NS 35 DIN rails



ME 45 UT/FE BUS/ 5+2 GN - Mounting base housing



2735577

<https://www.phoenixcontact.com/us/products/2735577>

ME B-KA - Cover

2854173

<https://www.phoenixcontact.com/us/products/2854173>

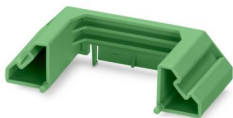


Terminal cover, 1 strip covers up to 12 terminal points, for ME-BUS terminal opening, (male side)

ME DH36 NS 35 - Spacer

2909895

<https://www.phoenixcontact.com/us/products/2909895>



Spacers, for protection of the input or output contacts for DIN rail NS 35, width [B] 36 mm

ME 45 UT/FE BUS/ 5+2 GN - Mounting base housing



2735577

<https://www.phoenixcontact.com/us/products/2735577>

IMC 1,5/ 5-ST-3,81 AU - PCB connectors

1943276

<https://www.phoenixcontact.com/us/products/1943276>



PCB connector, nominal cross section: 1.5 mm², color: green, nominal current: 8 A, rated voltage (III/2): 160 V, contact surface: Gold, contact connection type: Pin, number of potentials: 5, number of rows: 1, number of positions: 5, number of connections: 5, product range: IMC 1,5/...-ST, pitch: 3.81 mm, connection method: Screw connection with tension sleeve, screw head form: L Slotted, conductor/PCB connection direction: 0 °, plug-in system: COMBICON MC 1,5, locking: without, mounting: without, type of packaging: packed in cardboard

MC 1,5/ 5-ST-3,81 AU - PCB connector

1860883

<https://www.phoenixcontact.com/us/products/1860883>



PCB connector, nominal cross section: 1.5 mm², color: green, nominal current: 8 A, rated voltage (III/2): 160 V, contact surface: Gold, contact connection type: Socket, number of potentials: 5, number of rows: 1, number of positions: 5, number of connections: 5, product range: MC 1,5/...-ST, pitch: 3.81 mm, connection method: Screw connection with tension sleeve, screw head form: L Slotted, conductor/PCB connection direction: 0 °, pin layout: Linear three-way pinning, plug-in system: COMBICON MC 1,5, locking: without, mounting: without, type of packaging: packed in cardboard

ME 45 UT/FE BUS/ 5+2 GN - Mounting base housing



2735577

<https://www.phoenixcontact.com/us/products/2735577>

IMC 1,5/ 2-ST-3,81 AU - PCB connectors

1943263

<https://www.phoenixcontact.com/us/products/1943263>



PCB connector, nominal cross section: 1.5 mm², color: green, nominal current: 8 A, rated voltage (III/2): 160 V, contact surface: Gold, contact connection type: Pin, number of potentials: 2, number of rows: 1, number of positions: 2, number of connections: 2, product range: IMC 1,5/...-ST, pitch: 3.81 mm, connection method: Screw connection with tension sleeve, screw head form: L Slotted, conductor/PCB connection direction: 0 °, plug-in system: COMBICON MC 1,5, locking: without, mounting: without, type of packaging: packed in cardboard

MC 1,5/ 2-ST-3,81 AU - PCB connector

1851999

<https://www.phoenixcontact.com/us/products/1851999>



PCB connector, nominal cross section: 1.5 mm², color: green, nominal current: 8 A, rated voltage (III/2): 160 V, contact surface: Gold, contact connection type: Socket, number of potentials: 2, number of rows: 1, number of positions: 2, number of connections: 2, product range: MC 1,5/...-ST, pitch: 3.81 mm, connection method: Screw connection with tension sleeve, screw head form: L Slotted, conductor/PCB connection direction: 0 °, plug-in system: COMBICON MC 1,5, locking: without, mounting: without, type of packaging: packed in cardboard

ME 45 UT/FE BUS/ 5+2 GN - Mounting base housing



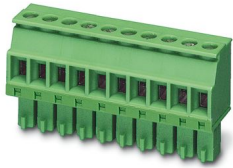
2735577

<https://www.phoenixcontact.com/us/products/2735577>

MCVR 1,5/ 5-ST-3,81 AU - PCB connector

1893203

<https://www.phoenixcontact.com/us/products/1893203>

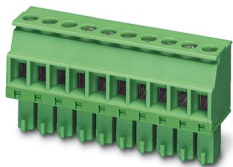


PCB connector, nominal cross section: 1.5 mm², color: green, nominal current: 8 A, rated voltage (III/2): 160 V, contact surface: Gold, contact connection type: Socket, number of potentials: 5, number of rows: 1, number of positions: 5, number of connections: 5, product range: MCVR 1,5/...-ST, pitch: 3.81 mm, connection method: Screw connection with tension sleeve, screw head form: L Slotted, conductor/PCB connection direction: 90 °, plug-in system: COMBICON MC 1,5, locking: without, mounting: without, type of packaging: packed in cardboard

MCVR 1,5/ 2-ST-3,81 AU - PCB connector

1940680

<https://www.phoenixcontact.com/us/products/1940680>



PCB connector, nominal cross section: 1.5 mm², color: green, nominal current: 8 A, rated voltage (III/2): 160 V, contact surface: Gold, contact connection type: Socket, number of potentials: 2, number of rows: 1, number of positions: 2, number of connections: 2, product range: MCVR 1,5/...-ST, pitch: 3.81 mm, connection method: Screw connection with tension sleeve, screw head form: L Slotted, conductor/PCB connection direction: 90 °, plug-in system: COMBICON MC 1,5, locking: without, mounting: without, type of packaging: packed in cardboard

ME 45 UT/FE BUS/ 5+2 GN - Mounting base housing



2735577

<https://www.phoenixcontact.com/us/products/2735577>

ME LPZS - PCB stop

2906911

<https://www.phoenixcontact.com/us/products/2906911>



DIN rail housing, after approx. 4 cm, the ME LPZS PCB pull-out stop prevents the PCB from being removed completely and locks the PCB in place

EML (44X64)R-ME - Label for ME ... UT ... BUS ... housing

0828266

<https://www.phoenixcontact.com/us/products/0828266>



Label for ME ... UT ... BUS ... housing, Roll, white, unlabeled, can be labeled with: THERMOMARK ROLLMASTER 300/600, THERMOMARK X1.2, THERMOMARK ROLL X1, THERMOMARK ROLL 2.0, THERMOMARK ROLL, mounting type: adhesive, lettering field size: 44 x 64 mm, Number of individual labels: 200

Phoenix Contact 2024 © - all rights reserved

<https://www.phoenixcontact.com>

Phoenix Contact USA
586 Fulling Mill Road
Middletown, PA 17057, United States
(+717) 944-1300
info@phoenixcon.com