

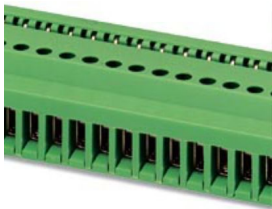
SKBD 13/MT - Plug-in card block

2202589

<https://www.phoenixcontact.com/us/products/2202589>



Please be informed that the data shown in this PDF document is generated from our online catalog. Please find the complete data in the user documentation. Our general terms of use for downloads are valid.



19" plug-in card block, color: green, contact surface: Tin, number of positions: 13, product range: SKBD, pitch: 5 mm, type of packaging: packed in cardboard

Commercial data

Item number	2202589
Packing unit	10 pc
Minimum order quantity	10 pc
Note	Made to order (non-returnable)
Product key	AARHBB
Catalog page	Page 263 (CC-2002)
GTIN	4017918053321
Weight per piece (including packing)	41.5 g
Weight per piece (excluding packing)	41.4 g
Country of origin	PL

SKBD 13/MT - Plug-in card block

2202589

<https://www.phoenixcontact.com/us/products/2202589>



Technical data


Product properties

Product type	19" plug-in card block
Product family	SKBD
Type	Direct plug-in technology
Number of positions	13
Pitch	5 mm

Connection data

Connection method	Screw connection with tension sleeve
Stripping length	8 mm
Screw thread	M3

Dimensions

Dimensional drawing	
Height	18.4 mm
Length	23.6 mm
Pitch	5 mm

Material specifications

Color	green
Contact surface	Tin Sn

Standards and regulations

Connection in acc. with standard	EN-VDE
----------------------------------	--------

Packaging specifications

Type of packaging	packed in cardboard
-------------------	---------------------

SKBD 13/MT - Plug-in card block

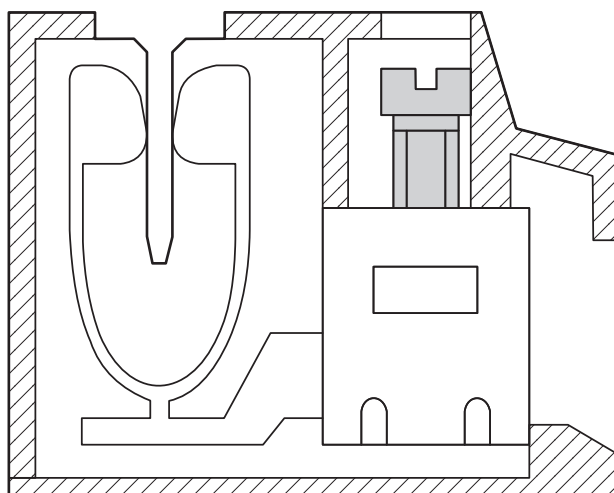
2202589

<https://www.phoenixcontact.com/us/products/2202589>



Drawings

Dimensional drawing



SKBD 13/MT - Plug-in card block




2202589

<https://www.phoenixcontact.com/us/products/2202589>

Approvals

To download certificates, visit the product detail page: <https://www.phoenixcontact.com/us/products/2202589>

 cULus Recognized Approval ID: E60425-19870604				
	Nominal voltage U_N	Nominal current I_N	Cross section AWG	Cross section mm^2
Use group B	250 V	10 A	30 - 14	-
Use group D	300 V	10 A	30 - 14	-

SKBD 13/MT - Plug-in card block



2202589

<https://www.phoenixcontact.com/us/products/2202589>

Classifications

ECLASS

ECLASS-11.0	27141152
ECLASS-12.0	27141152

ETIM

ETIM 8.0	EC002780
----------	----------

UNSPSC

UNSPSC 21.0	39121400
-------------	----------

SKBD 13/MT - Plug-in card block



2202589
<https://www.phoenixcontact.com/us/products/2202589>

Environmental product compliance

EU RoHS	
Fulfills EU RoHS substance requirements	Yes, No exemptions
China RoHS	
Environment friendly use period (EFUP)	EFUP-E
	No hazardous substances above the limits
EU REACH SVHC	
REACH candidate substance (CAS No.)	No substance above 0.1 wt%

Phoenix Contact 2024 © - all rights reserved
<https://www.phoenixcontact.com>

Phoenix Contact USA
586 Fulling Mill Road
Middletown, PA 17057, United States
(+717) 944-1300
info@phoenixcon.com