



TE Internal #: 1551576-5
Preloaded - C-Clip PCB Spring Contact, Scalable, Uncompressed
Height 3.4 mm [.134 in], Length 3.26 mm [.128 in], Width 1.4 mm [.055 in]
[View on TE.com >](#)

Connectors > Contacts > PCB Spring Contacts



Spring Finger Type: **Preloaded - C-Clip**
Scalable: **Yes**
Side Protected: **No**
Uncompressed Height: **3.4 mm [.134 in]**
Product Length: **3.26 mm [.128 in]**

Features

Product Type Features

Connector System	Board-to-Board
Connector & Contact Terminates To	Printed Circuit Board
Spring Finger Type	Preloaded - C-Clip
Scalable	Yes

Configuration Features

Number of Positions	1
Side Protected	No

Contact Features

Contact Underplating Material	Nickel
PCB Contact Termination Area Plating Material	Gold
Contact Base Material	Stainless Steel
Contact Working Range (Low)	2.5 mm[.098 in]
Contact Working Range (High)	3.1 mm[.122 in]
Point of Contact Area Plating Material	Gold



Contact Current Rating (Max)	.5 A
------------------------------	------

Dimensions

Uncompressed Height	3.4 mm[.134 in]
Product Length	3.26 mm[.128 in]
Product Width	1.4 mm[.055 in]

Usage Conditions

Operating Temperature Range	-40 – 85 °C[-40 – 185 °F]
-----------------------------	---------------------------

Operation/Application

Circuit Application	Signal
---------------------	--------

Packaging Features

Packaging Quantity	4000
Packaging Method	Tape & Reel

Product Compliance

For compliance documentation, visit the product page on TE.com>

EU RoHS Directive 2011/65/EU	Compliant
EU ELV Directive 2000/53/EC	Compliant
China RoHS 2 Directive MIIT Order No 32, 2016	No Restricted Materials Above Threshold
EU REACH Regulation (EC) No. 1907/2006	Current ECHA Candidate List: JUNE 2024 (241) Candidate List Declared Against: JUNE 2024 (241) Does not contain REACH SVHC
Halogen Content	Low Halogen - Br, Cl, F, I < 900 ppm per homogenous material. Also BFR/CFR/PVC Free
Solder Process Capability	Reflow solder capable to 260°C

Product Compliance Disclaimer

This information is provided based on reasonable inquiry of our suppliers and represents our current actual knowledge based on the information they provided. This information is subject to change. The part numbers that TE has identified as EU RoHS compliant have a maximum concentration of 0.1% by weight in homogenous materials for lead, hexavalent chromium, mercury, PBB, PBDE, DBP, BBP, DEHP, DIBP, and 0.01% for cadmium, or qualify for an exemption to these limits as defined in the Annexes of Directive 2011/65/EU (RoHS2). Finished electrical and electronic equipment products will be CE marked as required by Directive 2011/65/EU. Components may not be CE marked. Additionally, the part numbers that TE has identified as EU ELV compliant have a maximum concentration of 0.1% by weight in homogenous materials for lead, hexavalent chromium, and mercury, and 0.01% for cadmium, or qualify for an exemption to these limits as defined in the Annexes of Directive 2000/53/EC (ELV). Regarding the REACH Regulation, the information TE provides on SVHC in articles for this part number is based on the latest European Chemicals Agency (ECHA) 'Guidance on requirements for substances in articles' posted at this URL: <https://echa.europa.eu/guidance-documents/guidance-on-reach>



Compatible Parts



TE Part # 2305018-2
USB TYPE C, REC IPX8 ON BOARD
DUAL SMT



TE Part # 2388202-2
Shield Finger, 3.8mm

Customers Also Bought



TE Part #1977223-6
FSM2JSMASTR=6MM TACT
SWITCH,



TE Part #1734839-5
FPC CONN. 0.5MM PITCH T/C, 5P



TE Part #2388202-2
Shield Finger, 3.8mm



TE Part #1-1734839-6
FPC CONN. 0.5MM PITCH T/C,16P



TE Part #1544301-2
CONTACT A SOUDER



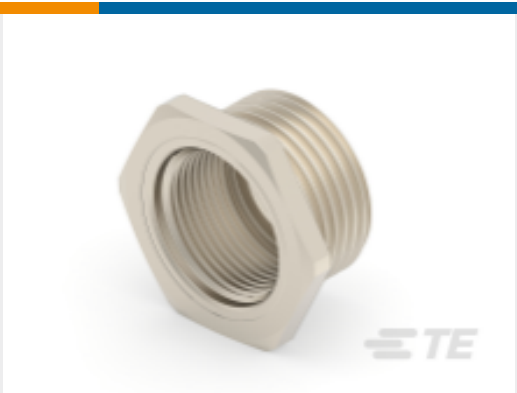
TE Part #382811-5
SHUNT, ECON, PHBRN, BLACK



TE Part #1544223-1
CONTACT 718 MODIFI



TE Part #394811-E
M12 FEMALE, X CODE, 8P, 17MM
SMT, CAT6A



TE Part #394847-E
M12 METAL SHELL, FEMALE, VERT,
13MM, C6A

Documents

Product Drawings
Shield Finger, 3.4mm

English

CAD Files
Customer View Model



[ENG_CVM_CVM_1551576-5_A.2d_dxf.zip](#)

English

[3D PDF](#)

3D

Customer View Model

[ENG_CVM_CVM_1551576-5_A.3d_igs.zip](#)

English

Customer View Model

[ENG_CVM_CVM_1551576-5_A.3d_stp.zip](#)

English

By downloading the CAD file I accept and agree to the [Terms and Conditions](#) of use.