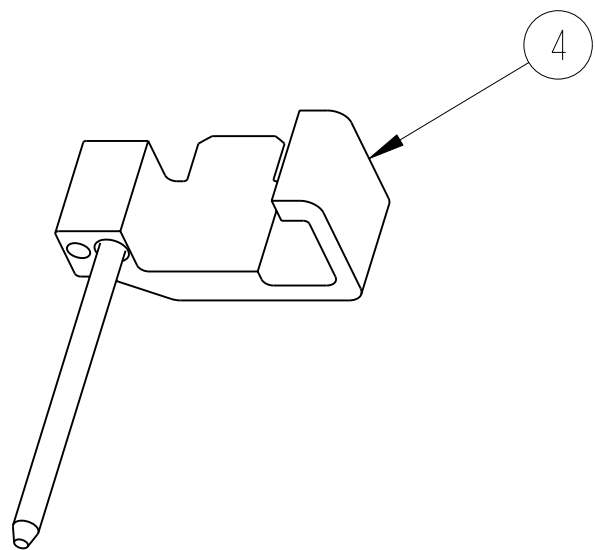
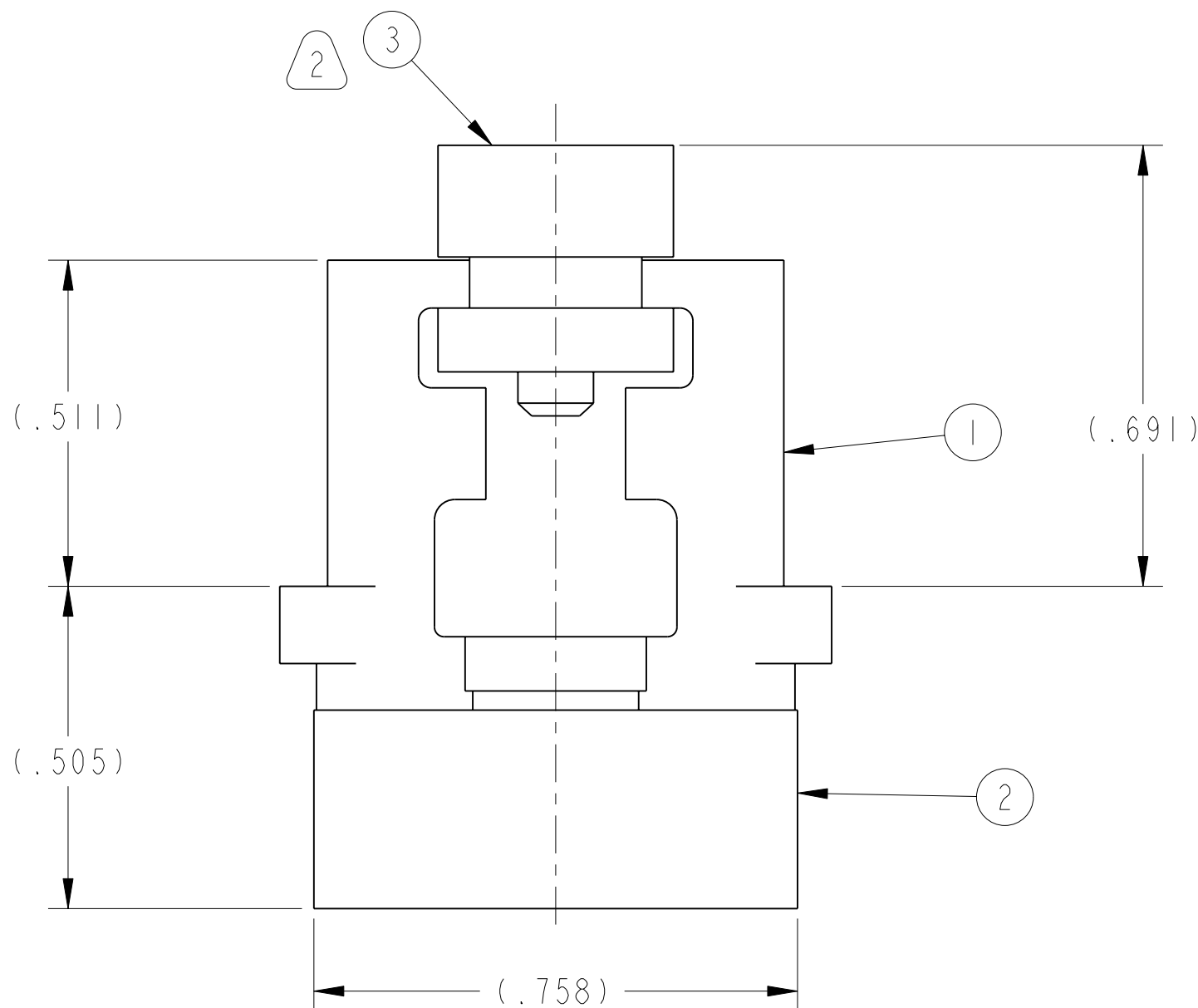
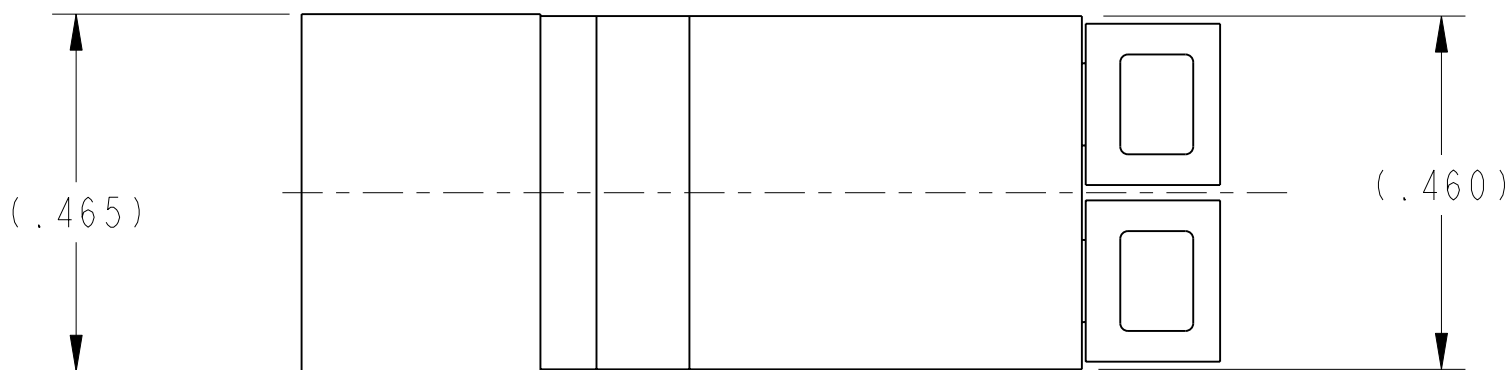
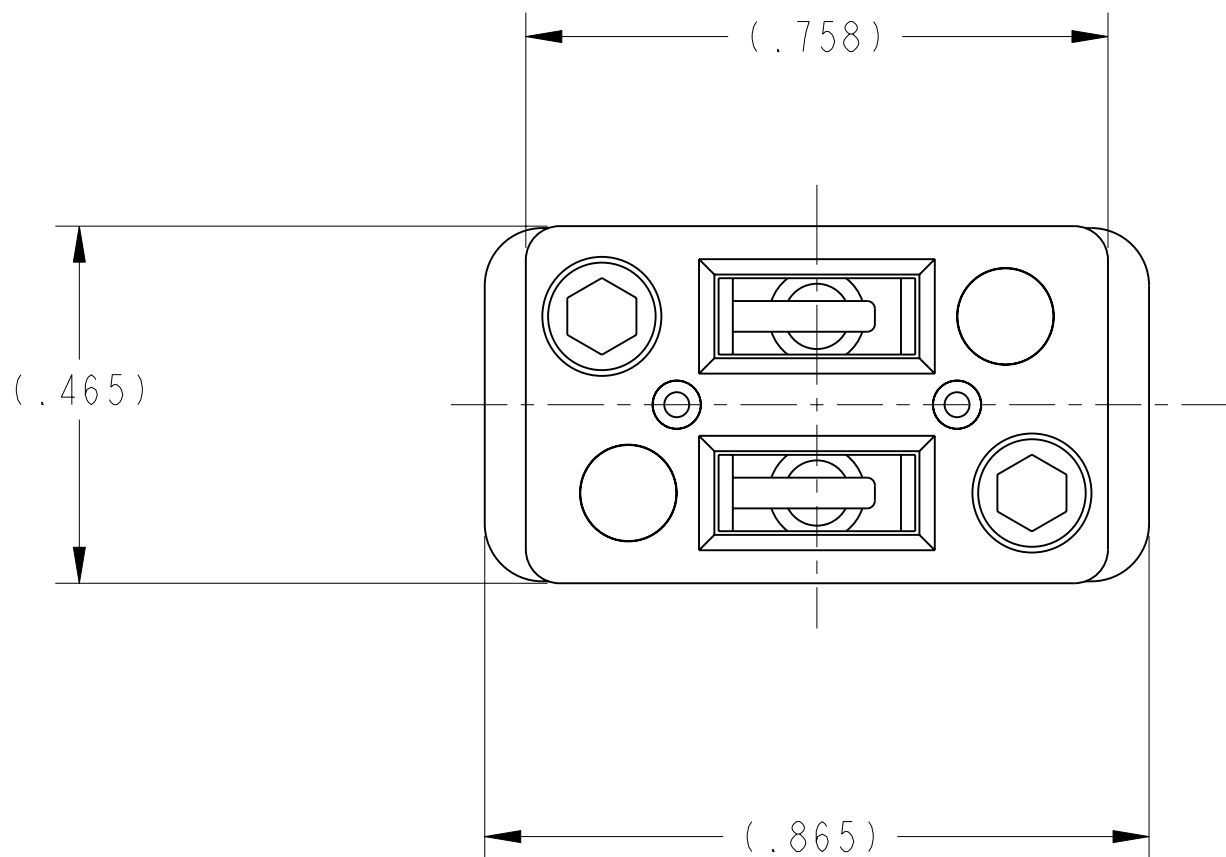


REVISONS		
LTR	DESCRIPTION	DATE
A	PRODUCTION RELEASE	8/15/08
B	CL(1) SEE CHANGE NOTICE ECN: B1908	1/18/13 RKC
C	CL (11) ADDED NOTE 3 ECN: C5094	5/10/17 RKC



SCALE 5.000



3. MOLDING GATE VESTIGES ON MOLDED PLASTIC COMPONENTS CAN PROTRUDE A MAXIMUM OF .015" FROM THE SURFACE OF THE PART.
2. FOR INSTALLATION INSTRUCTIONS, SEE NEXT HIGHER ASSEMBLY.
1. FRONT INSERT ASSEMBLY, STRAIN RELIEFS, AND MT GUIDE PIN ASSEMBLY ARE SHIPPED UNASSEMBLED.


NOTES:

THE USE OF THIS DOCUMENT IS UNLIMITED.
HOWEVER, DOCUMENTS REFERENCED HEREON
MAY CONTAIN LIMITED RIGHTS DATA.

SCALE 4.000

10-507863-200/299	PRO/ENGINEER INFORMATION
AND OTHERS	Pro/e Model Used: 10_504826_7.ASSEMB
NEXT ASSEMBLY	Drawing Name: 10_504826_7

UNLESS OTHERWISE SPECIFIED	SPECIFICATIONS
LINEAR DIMENSIONS ARE IN INCHES	MATERIAL SPEC.
TOLERANCES:	NA
.XXXX = $\pm .0005$ ANGLES = $\pm 2^\circ$	
.XXX = $\pm .010$	
.XX = $\pm .03$	
.X = $\pm .1$	

DIM. & TOL. PER ASME Y14.5M;	PROCESS SPEC.
DRM PER MIL-DTL-31000;	
OTHER Amphenol Stds. PER 9-3800	NA
LEADS:	
 = FLAG NOTE CALL OUT	
REFERENCE ONLY	

4	4	10-504808-7	CLAMP, PIN	
3	2	10-504819-3	STRAIN RELIEF	
2	1	10-504819-7	INSERT ASSEMBLY, FRONT	
1	1	10-504819-6	INSERT, REAR	
POS	QTY	PART NUMBER	DESCRIPTION	NOTE

APPROVALS		DATE	PARTS LIST	
PREPARED BY R. CHAPMAN	15-Aug-08	AMPHENOL CORPORATION 40-60 DELAWARE AVENUE SIDNEY, N.Y. 13838	INSERT ASSEMBLY, FIBER OPTIC, MODULE, MT TYPE FERRULE (2 POSITION)	
ENGINEER IN CHARGE E. HICKEY				
DESIGN MANAGER E. HICKEY				
DESIGN ACTIVITY GROUP BLP				
THIRD ANGLE PROJECTION				
		SIZE C	CAGE CODE 77820	DOCUMENT NO. 10-504826-7
		SCALE: 3.0	REF: NA	REV. C
				SHEET 1 OF 1