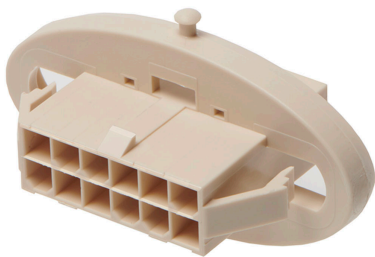




Part Number : [2070170004](#)
Product Description : Mini-Fit Sigma Sealed Plug Housing, Dual Row, 4.20mm Pitch, 4 Circuits, UL94V-0, Natural
Series Number : 207017
Status : Active
Product Category : Connector Housings



Documents & Resources


Drawings
[Drawing 2070170004_sd.pdf](#)
[Packaging Design Drawing 2070170000-PK-000.pdf](#)

3D Models and Design Files
[3D Model 2070170004_stp.zip](#)

Specifications
[Application Specification 2070170000-AS-000.pdf](#)
[Product Specification 2070170000-PS-000.pdf](#)
[Test Summary 2070170000-TS-000.pdf](#)

Product Environment Compliance

Compliance

GADSL/IMDS	Not Relevant
China RoHS	
EU ELV	Not Relevant
Low-Halogen Status	Not Low-Halogen per IEC 61249-2-21
REACH SVHC	Not Contained per D(2024)4144-DC (27 June 2024)
EU RoHS	Compliant per EU 2015/863

[Multiple Part Product Compliance Statements](#)

- Eu RoHS
- REACH SVHC
- Low-Halogen

[Multiple Part Industry Compliance Documents](#)

- IPC 1752A Class C
- IPC 1752A Class D
- Molex Product Compliance Declaration
- IEC-62474
- chemSHERPA (xml)

EU RoHS Certificate of Compliance

Part Details

General

Status	Active
Category	Connector Housings
Series	207017
Description	Mini-Fit Sigma Sealed Plug Housing, Dual Row, 4.20mm Pitch, 4 Circuits, UL94V-0, Natural
Application	Power, Wire-to-Wire
Product Family	Mini-Fit Family Power Connectors
Product Name	Mini-Fit Sigma Sealed
UPC	193264928439

Agency

UL	E29179
----	--------

Physical

Circuits (maximum)	4
Color - Resin	Natural
Gender	Plug
Glow-Wire Capable	No
Lock to Mating Part	Yes
Material - Resin	Nylon
Net Weight	3.670/g
Number of Rows	2
Packaging Type	Bag
Panel Mount	Yes
Pitch - Mating Interface	4.20mm
Pitch - Termination Interface	4.20mm

Polarized to Mating Part	Yes
Temperature Range - Operating	-40° to +105°C

Mates With / Use With

Mates with Part(s)

Description	Part Number
Mini-Fit Jr. Dual Row Receptacle Housings	<u>46992</u>
Mini-Fit Jr. Receptacle Housings	<u>5557</u>
Mini-Fit TPA2 and Mini-Fit Sigma Dual Row Receptacle Housings	<u>172708</u>

Use with Part(s)

Description	Part Number
Mini-Fit Sigma Sealed Cap for 4 Circuit Plug Housing	<u>2070190004</u>
Mini-Fit Sigma Terminal Position Assurance (TPA) Retainer, 4.20mm Pitch, UL 94V-0, Glow-Wire Capable, 2 Circuits, Natural	<u>1727092002</u>
Mini-Fit TPA2/Sigma Male Crimp Terminals	<u>172765</u>
Mini-Fit TPA2/Sigma Male Crimp Terminals	<u>203070</u>