

## Illuminated pushbutton Ø 22 mm silver contact

82-6151.1114.B001



<https://eao.com/p/82-6151.1114.B001>

Your product:

---



## 82-6151.1114.B001

### Illuminated pushbutton Ø 22 mm silver contact

#### FRONT

|                       |                 |
|-----------------------|-----------------|
| Front bezel shape:    | flush           |
| Front form:           | round           |
| Front dimension:      | Ø 25 mm         |
| Front bezel material: | Stainless steel |

#### MOUNTING

|                   |                |
|-------------------|----------------|
| Mounting type:    | Panel mounting |
| Mounting cut-out: | Ø 22 mm        |

#### OPERATING-/INDICATION PART

|                        |                 |
|------------------------|-----------------|
| Lens optics:           | opaque          |
| Illumination colour:   | Red             |
| Symbol:                | ON/OFF          |
| Lens colour:           | Silver          |
| Lens material:         | Stainless steel |
| Lens illumination:     | illuminative    |
| Lens shape:            | flush           |
| Shape of illumination: | Ring            |

#### ELECTRICAL CHARACTERISTICS

|                    |  |
|--------------------|--|
| Electric strength: | 1500 VAC, 50 Hz 1 minute between life terminals and ground |
| Operating voltage: | 24 V AC/DC   |

|   |   |  |  |
|---|---|--|--|
| <b>Rated Operational Voltage Ue:</b>            | 250 VAC   |  |  |
| <b>Pollution degree:</b>                        | 2, according to EN IEC 60947-1  |  |  |
| <b>Contacts:</b>                                | 1 C   |  |  |
| <b>Thermal current Ith:</b>                     | 5 A   |  |  |
| <b>Operation current:</b>                       | 7 mA  |  |  |
| <b>Switching voltage and switching current:</b> | according to IEC 60947-5-1 (Silver contacts)<br>Service categorie AC-15<br>Voltage<br>24 VAC<br>35 VAC<br>110 VAC<br>220 VAC<br>Switch rating DC service categorie DC-13 (Silver contacts)<br>Voltage<br>24 VDC<br>35 VDC<br>110 VDC<br>220 VDC | Current<br>1 A<br>1 A (M12 versio<br>1 A<br>0.5 A<br>Current<br>0.7 A<br>0.5 A (M12 vers<br>0.2 A<br>0.1 A |  |
|   | according to UL 508 (Silver contacts)<br>cosφ 0,75 ... 0,8<br>Voltage<br>120 VAC<br>240 VAC<br>24 VAC   | Current<br>5 A<br>3 A<br>1 A   |  |
| <b>Rated insulation voltage Ui:</b>             | 250 V   |  |  |
| <b>Electrical lifetime:</b>                     | 50 000 cycles of operation  |  |  |

## MECHANICAL CHARATERISTIC

|                             |                                  |
|-----------------------------|----------------------------------|
| <b>Operating force:</b>     | 4 N ... 7 N                      |
| <b>Operating Travel:</b>    | ca. 3 mm                         |
| <b>Terminal:</b>            | Soldering terminal, 2.8 x 0.5 mm |
| <b>Mechanical lifetime:</b> | 1 Mio. cycles of operation       |
| <b>Contact material:</b>    | Silver                           |
| <b>Weight:</b>              | 0.018 kg                         |
| <b>Switching system:</b>    | Snap-action switching element    |
| <b>Switching action:</b>    | Momentary                        |
| <b>Tightening torque:</b>   | 0.5 ... 0.6 Nm                   |

## AMBIENT CONDITION

|                               |            |
|-------------------------------|------------|
| <b>IP front protection:</b>   | IP65, IP67 |
| <b>Operating temperature:</b> |            |

– 30 °C ... + 70 °C

**Climate resistance:**

Damp heat, 21 days according to IEC 60512-11

**Storage temperature:**

– 40 °C ... + 80 °C

**Shock resistance:**

Max. 500 m / s<sup>2</sup> as per IEC 60068-2-27

**Vibration resistance:**

10 ... 500 Hz, amplitude 1.5 mm p-p according to IEC 60068-2-6

**CERTIFICATE**

**Approbations:**

CB, CCC, C UL, UL

**Conformities:**

CE, 2011 / 65 / EC (RoHS), 2014 / 35 / EU (LVD)

**OTHER**

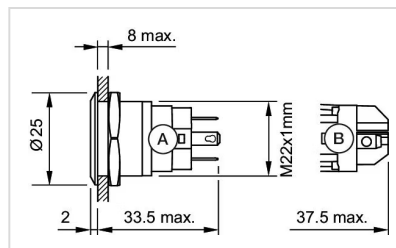
**Short Description:**

Illuminated pushbutton Ø 22 mm silver contact, Momentary, 24 V AC/DC, 1 C, Soldering terminal, 2.8 x 0.5 mm, round, Stainless steel, Red, ON/OFF, Silver

**Kind of illumination:**

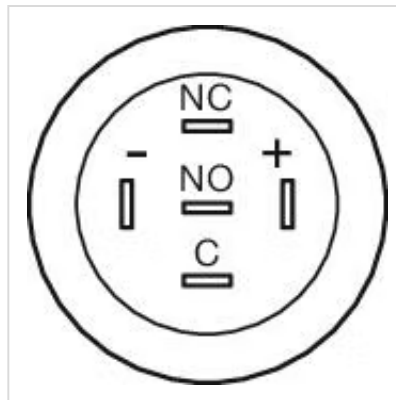
Single-LED

**Dimension drawings:**

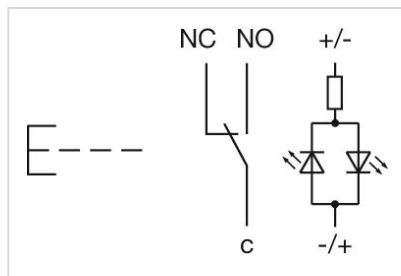


A = Solder terminal  
B = Screw terminal

**Component layouts:**



**Wiring diagrams:**



**Mounting cut-outs:**

