

UM-ALU 4-100,5 FRONT 40 ALUSP - Front plate



2202074

<https://www.phoenixcontact.com/us/products/2202074>

Please be informed that the data shown in this PDF document is generated from our online catalog. Please find the complete data in the user documentation. Our general terms of use for downloads are valid.

Press-drawn section housings, Basic profile front plate, width: 101.8 mm, length: 40 mm, depth: 2 mm, recommended for UM-ALU 4-..COVER PA.. lateral elements



Your advantages

- Aluminum extruded profile
- Variety of connection technology
- Can be mounted on the DIN rail
- Available in lengths from 42.5 mm ... 990 mm, can be cut to any length
- Available in overall widths of 75 mm and 105 mm
- EMC protection

Commercial data

Item number	2202074
Packing unit	1 pc
Minimum order quantity	1 pc
Product key	ACHDFZ
GTIN	4046356987431
Weight per piece (including packing)	23.6 g
Weight per piece (excluding packing)	23.6 g
Country of origin	HU

UM-ALU 4-100,5 FRONT 40 ALUSP - Front plate



2202074

<https://www.phoenixcontact.com/us/products/2202074>

Technical data

Product properties

Product type	Component housing cover
Housing type	Press-drawn section housings
Housing series	UM-ALU
Product family	UM-ALU 4-100,5
Type	Basic profile front plate
Ventilation openings present	no

Dimensions

Width	101.8 mm
Depth	2 mm
Length	40 mm

Material specifications

Color (Housing)	aluminum
Housing material	Aluminum
Surface characteristics	anodized

Environmental and real-life conditions

Ambient conditions

Max. IP code to attain	IP40
Ambient temperature (operation)	-40 °C ... 100 °C (depending on power dissipation)
Ambient temperature (storage/transport)	-40 °C ... 55 °C
Ambient temperature (assembly)	-5 °C ... 100 °C

UM-ALU 4-100,5 FRONT 40 ALUSP - Front plate

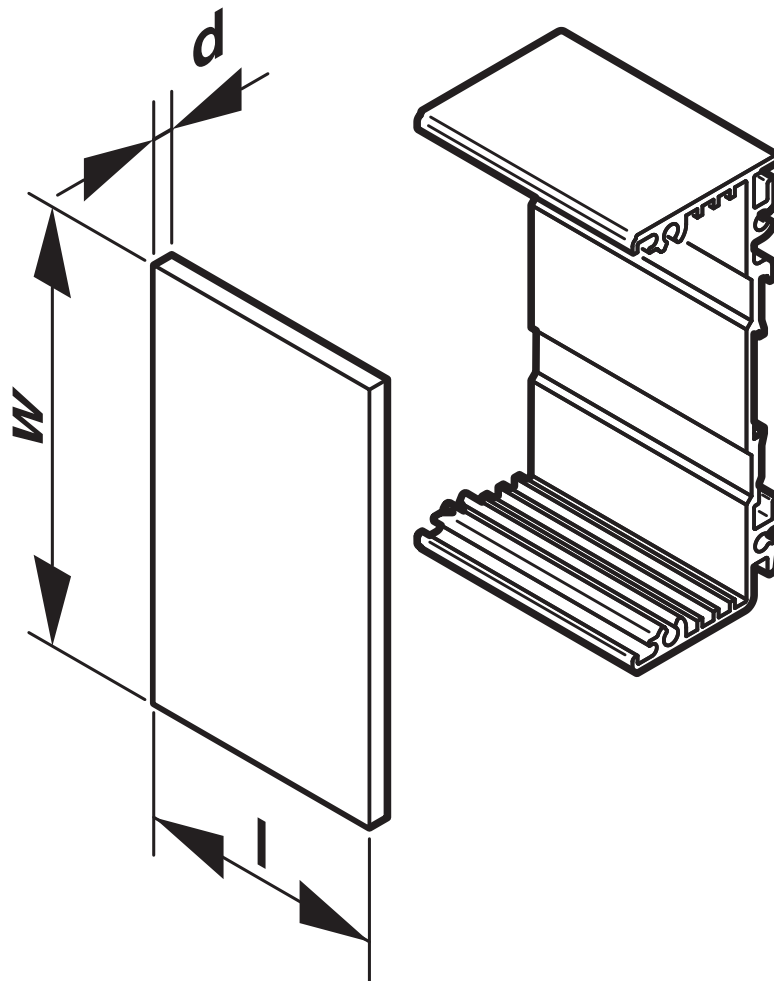
2202074

<https://www.phoenixcontact.com/us/products/2202074>



Drawings

Schematic diagram



UM-ALU 4-100,5 FRONT 40 ALUSP - Front plate



2202074

<https://www.phoenixcontact.com/us/products/2202074>

Classifications

ECLASS

ECLASS-11.0	27182701
ECLASS-13.0	27190605

ETIM

ETIM 9.0	EC002779
----------	----------

UNSPSC

UNSPSC 21.0	31261500
-------------	----------

UM-ALU 4-100,5 FRONT 40 ALUSP - Front plate



2202074

<https://www.phoenixcontact.com/us/products/2202074>

Environmental product compliance

EU RoHS	
Fulfills EU RoHS substance requirements	Yes, No exemptions
China RoHS	
Environment friendly use period (EFUP)	EFUP-E
	No hazardous substances above the limits
EU REACH SVHC	
REACH candidate substance (CAS No.)	No substance above 0.1 wt%

UM-ALU 4-100,5 FRONT 40 ALUSP - Front plate



2202074

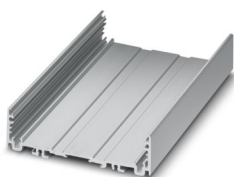
<https://www.phoenixcontact.com/us/products/2202074>

Mandatory accessories

UM-ALU 4-100,5 PROFIL 40 - Profile

2202071

<https://www.phoenixcontact.com/us/products/2202071>



Press-drawn section housings, Screw mounting, Basic profile, profile width (internal): 100.5 mm, profile width (external): 105 mm, length: 40 mm, depth: 29.4 mm

UM-ALU 4-100,5 COVER PA BK - Lateral element

2200952

<https://www.phoenixcontact.com/us/products/2200952>



Press-drawn section housings, Screw mounting, Side elements (left and right) incl. snap-on foot and screws for basic profile, width: 105.4 mm

Phoenix Contact 2024 © - all rights reserved
<https://www.phoenixcontact.com>

Phoenix Contact USA
586 Fulling Mill Road
Middletown, PA 17057, United States
(+717) 944-1300
info@phoenixcon.com