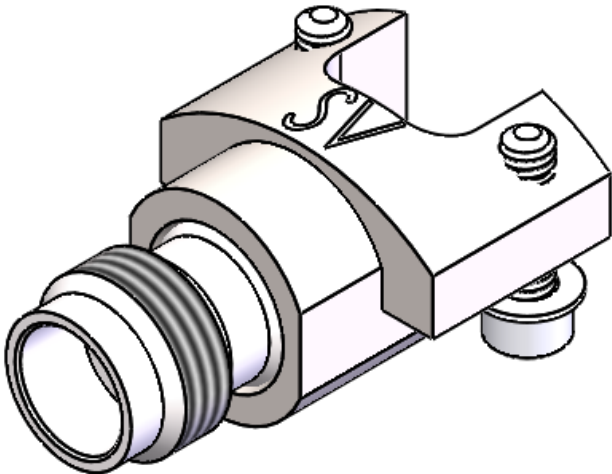
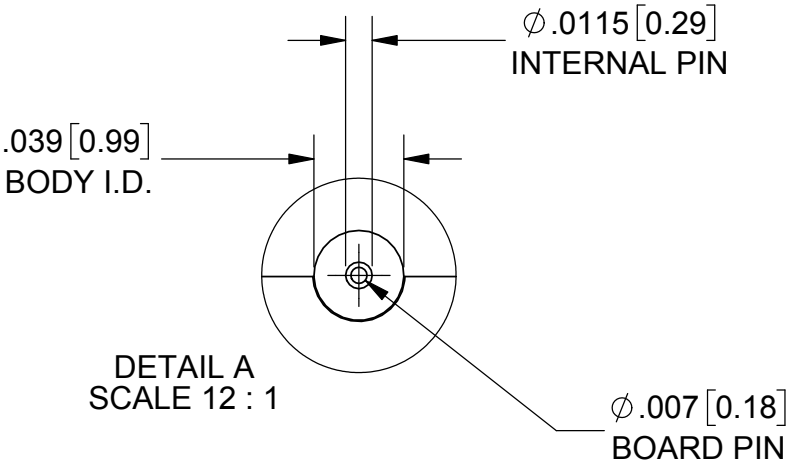
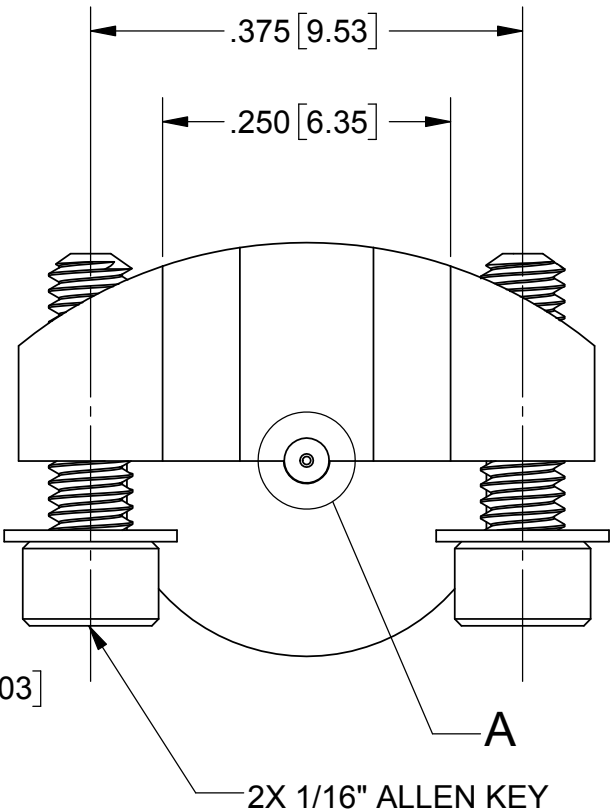
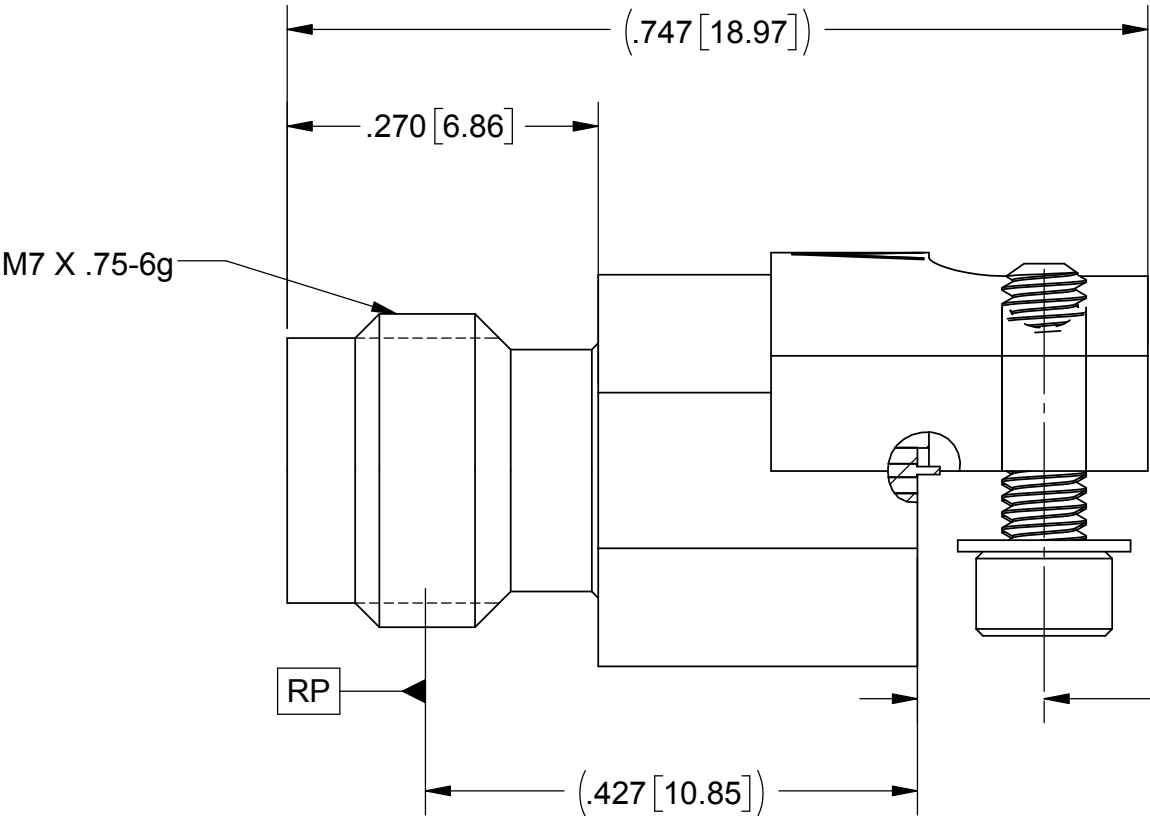
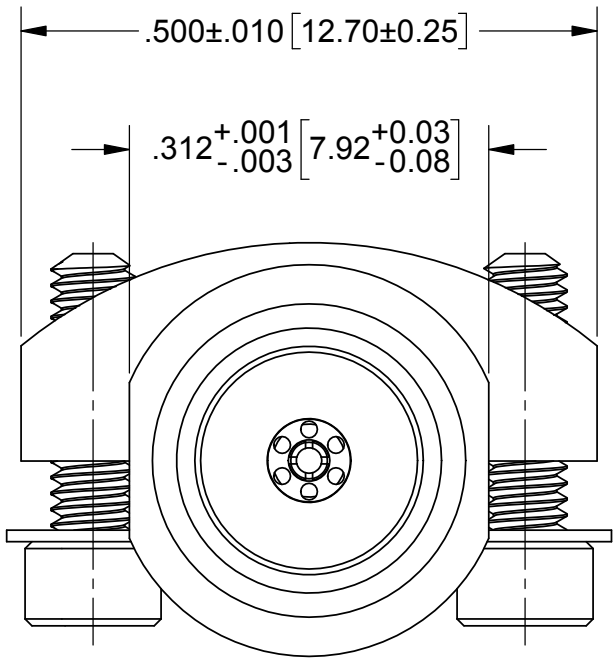


PRODUCT DATA DRAWING

REVISION HISTORY			
REV	DESCRIPTION	DATE	APPROVED
C	DCN 47103	1/18	DAL



MATERIAL:

BODY: STAINLESS STEEL
CONTACT: BERYLLIUM COPPER
INSULATOR: PTFE
BEAD: ULTEM

FINISH:

BODY: PASSIVATED
CONTACT: GOLD OVER NICKEL, .00005" MIN.

PERFORMANCE:

IMPEDANCE: 50 OHMS
FREQ. RANGE: DC TO 67.0 GHz.
VSWR: 1.25:1 MAX. DC TO 67.0 GHz.

- NOTES:
1. FOR RECOMMENDED FOOTPRINT FOR YOUR PCB, CONTACT SV MICROWAVE SALES DEPARTMENT (sales@svmicro.com, 561-840-1800)

MATERIAL:	SEE NOTES	DIMENSIONS ARE IN INCHES TOLERANCES: FRACTIONAL: ±1/64 ANGULAR: X° ±1°0' X°X' ±15' DECIMAL: .X ±.030 .XX ±.010 .XXX ±.005 INTERPRET DIMENSIONS AND TOLERANCES PER ASME Y14.5M - 1994	UNLESS OTHERWISE SPECIFIED 1) ALL DIMENSIONS ARE IN INCHES (MILLIMETERS) 2) ALL DIMENSIONS ARE AFTER PLATING. 3) BREAK CORNERS & EDGES .005 R. MAX. 4) CHAM. 1ST & LAST THREADS. 5) SURFACE ROUGHNESS 63-MIL-STD-10. 6) DIA.'S ON COMMON CENTERS TO BE CONCENTRIC WITHIN .005 T.I.R. 7) REMOVE ALL BURRS	<div><div><div>SV</div><div>Amphenol</div><div>MICROWAVE</div></div><div>2400 Centrepark West Drive, Suite 100 West Palm Beach, FL 33409</div></div>						
FINISH:	SEE NOTES			TITLE:	1.85mm FEMALE EDGE LAUNCH CONNECTOR WITH Ø .007 LAUNCH PIN					
SURFACE AREA:	N/A			SIZE	CAGE CODE	DWG. NO.				
PROPRIETARY THE INFORMATION CONTAINED IN THIS DRAWING IS THE SOLE PROPERTY OF SV MICROWAVE, INC. ANY REPRODUCTION IN PART OR AS A WHOLE WITHOUT THE WRITTEN PERMISSION OF SV MICROWAVE, INC IS PROHIBITED.		THIRD ANGLE PROJECTION <div><div><div><div></div><div></div><div></div><div></div></div><div></div></div><div><div><div></div><div></div><div></div><div></div></div><div></div></div></div>	DRAWN:	ELA 02-07-17		B	95077	SF3321-60021	SCALE: 6:1	SHEET 1 OF 1
		CHECKED:	DAL 02/07/17							
		APPROVED:	DAL 02/07/17							

Mouser Electronics

Authorized Distributor

Click to View Pricing, Inventory, Delivery & Lifecycle Information:

[Amphenol:](#)

[SF3321-60021](#)