

SIGN	DATE	DESCRIPTION	APPROVER
△	10/27'09	Dim.A and Dim.B tolerance table changed.	Kind
△	02/29'12	The real product doesn't comply with the drawing, remove this step	Aaron
<b>THIS IS CAD DRAWING, DO NOT REVISE MANUALLY!!!</b>			

Material:

- Item 1:Terminal housing:Thermoplastic (UL94 V-0)

Electrical (Match with AO 3.81 series)

- Voltage rating: 160V
- Current rating: 8A
- Wire range: 1.0~1.2mm<sup>2</sup>
- Withstanding Voltage: 1.32KV
- Critical dimension: ▽

**KI xx 30 x 1 xxxx G**

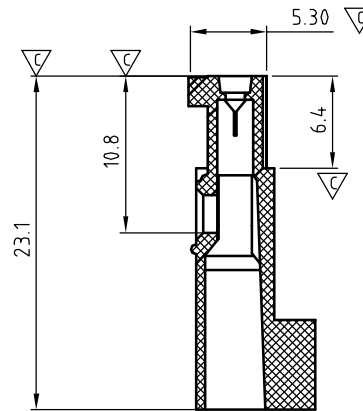
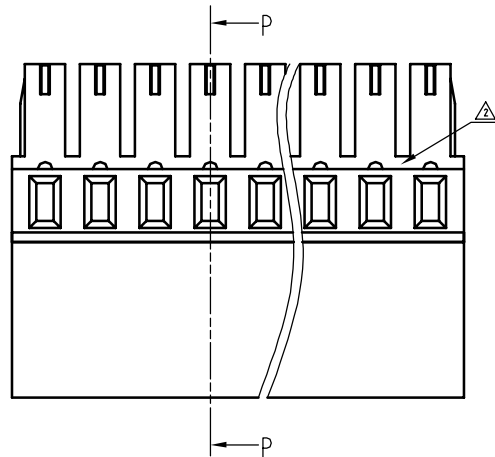
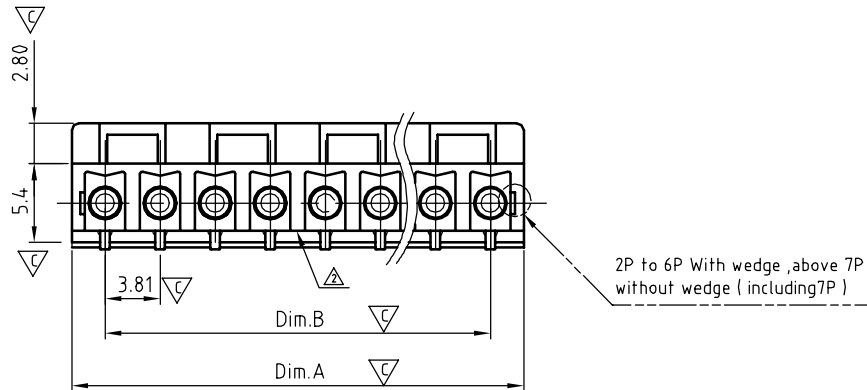
No. of poles

02 2 CONTACTS  
03 3 CONTACTS  
... ..  
24 24 CONTACTS

0 Black (RAL9005)  
2 Red (RAL3001/D)  
3 Orange(RAL2011/P)  
4 Yellow(RAL1018/A)  
5 Green(RAL6018/T)  
6 Blue (RAL5015/A)  
8 Grey(RAL7035/D)  
9 White(RAL1102)  
C Green(RAL6018/U)

RoHS compliant  
(lead<4%)  
In copper Alloy

0000:"@ "Logo (Standard)  
000A:"ANYTEK"Logo  
Any special item by  
customer request,  
please contact sales  
department.



Section P-P



Dim.A=(N-1)x3.81+4.60

Dim.B=(N-1)x3.81

Poles	2P~6P	7P~12P	13P~18P	19P~24P
Dim.A	+/-0.20	+/-0.25	+/-0.30	+/-0.35
Dim.B	+/-0.15	+/-0.20	+/-0.25	+/-0.30

**ANYTEK**

**CUSTOMER COPY**

ALL RIGHTS RESERVED. REPRODUCTION OR ISSUE TO THIRD PARTIES IN ANY FORM WHATEVER IS NOT PERMITTED WITHOUT WRITTEN AUTHORITY FROM THE PROPRIETOR. PROPERTY OF ANYTEK TECHNOLOGY CO., LTD

TITLE	KI 3.81 Series 2P~24P Body ( W/o flange & With high profile )						
PART NO.	Klxx30x1xxxxG			DWG NO.	8KI0002		
APPROVED	CHECKED	DESIGNED	DRAWN	CUST NO.			
		Aaron 2012.02.29	kind 2008.9.16			UNIT: mm	X. ±0.5
						SCALE: NONE	X.X ±0.3
				SHEET: 01/01	REV.: D		X.XX ±0.1
							X° ±1°

# Mouser Electronics

Authorized Distributor

Click to View Pricing, Inventory, Delivery & Lifecycle Information:

## Amphenol:

<a href="#"><u>KI0230510000G</u></a>	<a href="#"><u>KI0330510000G</u></a>	<a href="#"><u>KI0430510000G</u></a>	<a href="#"><u>KI0530510000G</u></a>	<a href="#"><u>KI0630510000G</u></a>	<a href="#"><u>KI0730510000G</u></a>
<a href="#"><u>KI0830510000G</u></a>	<a href="#"><u>KI0930510000G</u></a>	<a href="#"><u>KI1030510000G</u></a>	<a href="#"><u>KI1130510000G</u></a>	<a href="#"><u>KI1230510000G</u></a>	<a href="#"><u>KI1330510000G</u></a>
<a href="#"><u>KI1430510000G</u></a>	<a href="#"><u>KI1530510000G</u></a>	<a href="#"><u>KI1630510000G</u></a>	<a href="#"><u>KI1730510000G</u></a>	<a href="#"><u>KI1830510000G</u></a>	<a href="#"><u>KI1930510000G</u></a>
<a href="#"><u>KI2030510000G</u></a>	<a href="#"><u>KI2130510000G</u></a>	<a href="#"><u>KI2230510000G</u></a>	<a href="#"><u>KI2330510000G</u></a>	<a href="#"><u>KI2430510000G</u></a>	