

Actuator

704.101.010I

Distribution by
DigiKey

DigiKey



<https://digikey.eao.com/p/704.101.010I>

Your product:



704.101.010I Actuator

FRONT

Front bezel colour:	Black
Front dimension:	Ø 35 mm
Front bezel material:	Aluminium

MOUNTING

Design:	flush
Mounting cut-out:	Ø 30.5 mm

OPERATING-/INDICATION PART

Lever material:	plastic
Lever shape:	long
Lever colour:	Black

ELECTRICAL CHARACTERISTICS

Standards:	The switches comply with the "Standards for low-voltage switching devices" DIN EN 60947-1
------------	---

MECHANICAL CHARACTERISTIC

Switching action:	Rest - Maintained
Switching angle:	90° right
Switching positions:	2 positions
Weight:	0.056 kg
Mechanical lifetime:	≤2.5 Mio. cycles of operation

AMBIENT CONDITION

Storage temperature:	– 40 °C ... + 85 °C
IP Protection:	IP65 front side
Operating temperature:	– 40 °C ... + 55 °C

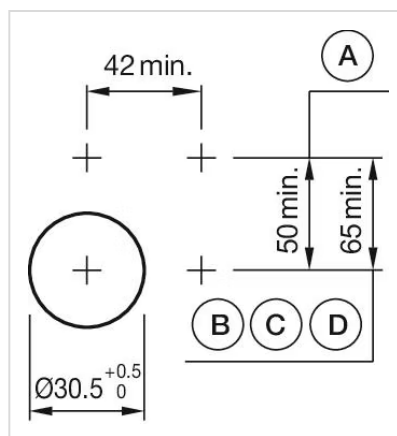
OTHER

Hints: Max. 3 switching elements can be clipped on

max. number of switching elements: 3

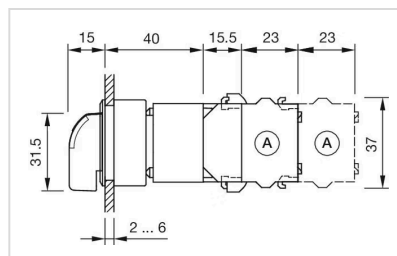
Short Description: Actuator, Ø 30.5 mm, Ø 35 mm, optional illuminative, Black, long, Black, Aluminium, anodised, Rest - Maintained

Mounting cut-outs:



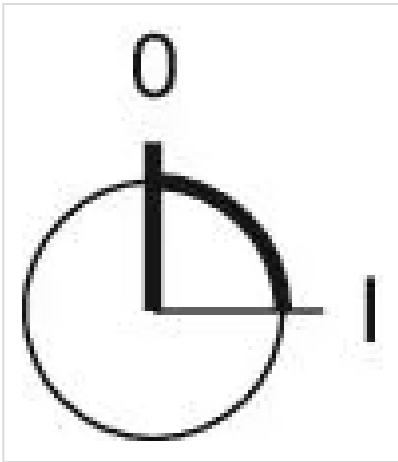
A = Screw terminal
B = Push-in terminal (PIT)
C = Plug-in terminal 6.3 mm x 0.8 mm
D = Double plug-in terminal 6.3 mm x 0.8 mm

Dimension drawings:



A = Screw terminal

Switching positions:



Wiring diagrams:

