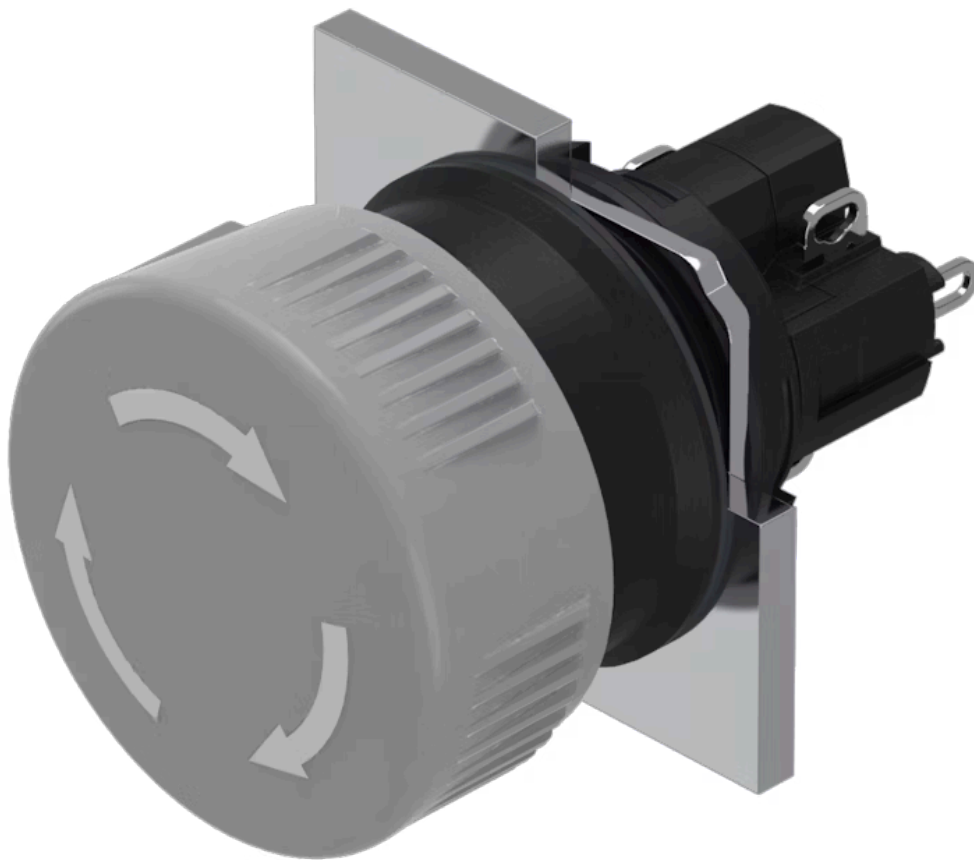


# Actuator

51-  
256.0258

Distribution by  
DigiKey

**DigiKey**



<https://digikey.eao.com/p/51-256.0258>

Your product:

---



## 51-256.0258 Actuator

### FRONT

**Front dimension:** Ø 24,5 mm

**Front form:** round

### MOUNTING

**Design:** raised

**Mounting type:** Panel mounting

### OPERATING-/INDICATION PART

**Lens colour:** Grey

**Lens material:** Plastic

**Lens illumination:** non illuminative

**Lens optics:** opaque

**Lens shape:** mushroom-head

### ELECTRICAL CHARACTERISTICS

**Switching rating:** 250 V @ 5 A

**Switching voltage and switching current:** 250 VAC, 5 A (ohmic)  
24 VDC, 2 A (inductive, L:R = 30 ms)

**Contacts:** 1 NC / 1 NO

### MECHANICAL CHARACTERISTIC

**Tightening torque:** Fixing nut max. 0.5 Nm

**Switching system:**

Self-cleaning, double-break snap action switching system, 1 normally closed and 1 normally open contact per element.

<b>Switching action:</b>	Maintained
<b>Contact material:</b>	Gold
<b>Mechanical lifetime:</b>	100 000 cycles of operation
<b>Switching system:</b>	Snap-action switching element
<b>Operating force:</b>	18 ... 21 N (depending on the switching element)
<b>Terminal:</b>	Soldering terminal
<b>Weight:</b>	0.011 kg

#### **AMBIENT CONDITION**

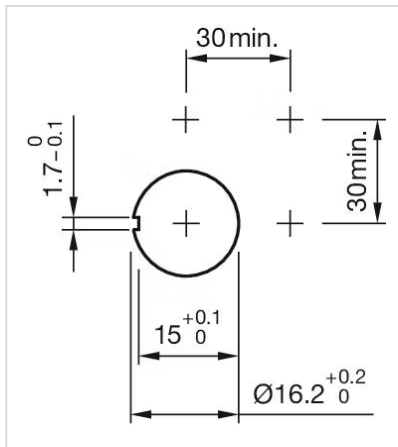
<b>IP front protection:</b>	IP65, according to DIN EN 60529
<b>Operating temperature:</b>	– 25 °C ... + 55 °C
<b>Storage temperature:</b>	– 40 °C ... + 85 °C

#### **CERTIFICATE**

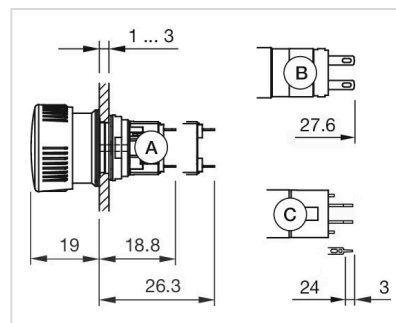
<b>Conformities:</b>	CE, UKCA, 2006 / 42 / EC (MD), 2011 / 65 / EC (RoHS)
<b>RoHS:</b>	RoHS compliant
<b>Approbations:</b>	CB (IEC 61058-1), CSA, ENEC (EN 61058-1), UL
<b>REACH:</b>	REACH compliant

#### **OTHER**

<b>Housing colour:</b>	Black
<b>Hints:</b>	Marking arrows
<b>Short Description:</b>	Actuator, Ø 24,5 mm, mushroom-head, non illuminative, Grey, Plastic, opaque, round, 1 NC / 1 NO, Maintained, Soldering terminal, IP65, according to DIN EN 60529
<b>Mounting cut-outs:</b>	



#### Dimension drawings:



A = Solder terminal  
 B = Plug-in terminal  $2.8 \text{ mm} \times 0.5 \text{ mm}$   
 C = Universal terminal  $2.0 \text{ mm} \times 0.5 \text{ mm}$

#### Wiring diagrams:

