

Actuator

704.029.4

Distribution by
DigiKey

DigiKey



<https://digikey.eao.com/p/704.029.4>

Your product:



704.029.4 Actuator

FRONT

Front dimension:	Ø 29 mm
Front bezel material:	Plastic
Front form:	round
Front bezel colour:	Black

MOUNTING

Design:	raised
---------	--------

OPERATING-/INDICATION PART

Lens colour:	Yellow
Lens illumination:	illuminative
Lens shape:	flush
Lens material:	Plastic
Lens optics:	transparent

ELECTRICAL CHARACTERISTICS

Standards:	The switches comply with the "Standards for low-voltage switching devices" DIN EN 60947-1
------------	---

MECHANICAL CHARACTERISTIC

Terminal:	Screw terminal
Operating Travel:	ca. 5.8 mm ± 0.2 mm
Mechanical lifetime:	≤3 Mio. cycles of operation

Switching action: Momentary

Operating force: 8 N

Weight: 0.056 kg

AMBIENT CONDITION

Operating temperature: - 40 °C ... + 55 °C

IP Protection: IP65 front side

Storage temperature: - 40 °C ... + 85 °C

OTHER

Hints: Frontring with protective cover to be mounted with a torque of 0.4 Nm onto actuator, Max. 3 switching elements can be clipped on

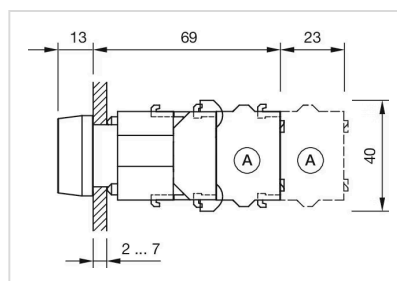
max. number of switching elements: 3

Housing material: Plastic

Short Description: Actuator, Ø 29 mm, flush, illuminative, Yellow, Plastic, transparent, round, Black, Plastic, Momentary, Screw terminal

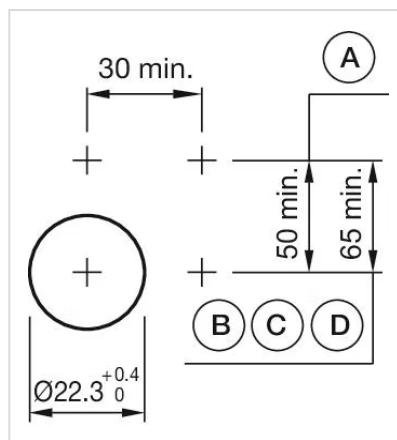
Housing colour: Grey

Dimension drawings:



A = Screw terminal

Mounting cut-outs:



A = Screw terminal
 B = Push-in terminal (PIT)
 C = Plug-in terminal 6.3 mm x 0.8 mm
 D = Double plug-in terminal 6.3 mm x 0.8 mm

Wiring diagrams:

