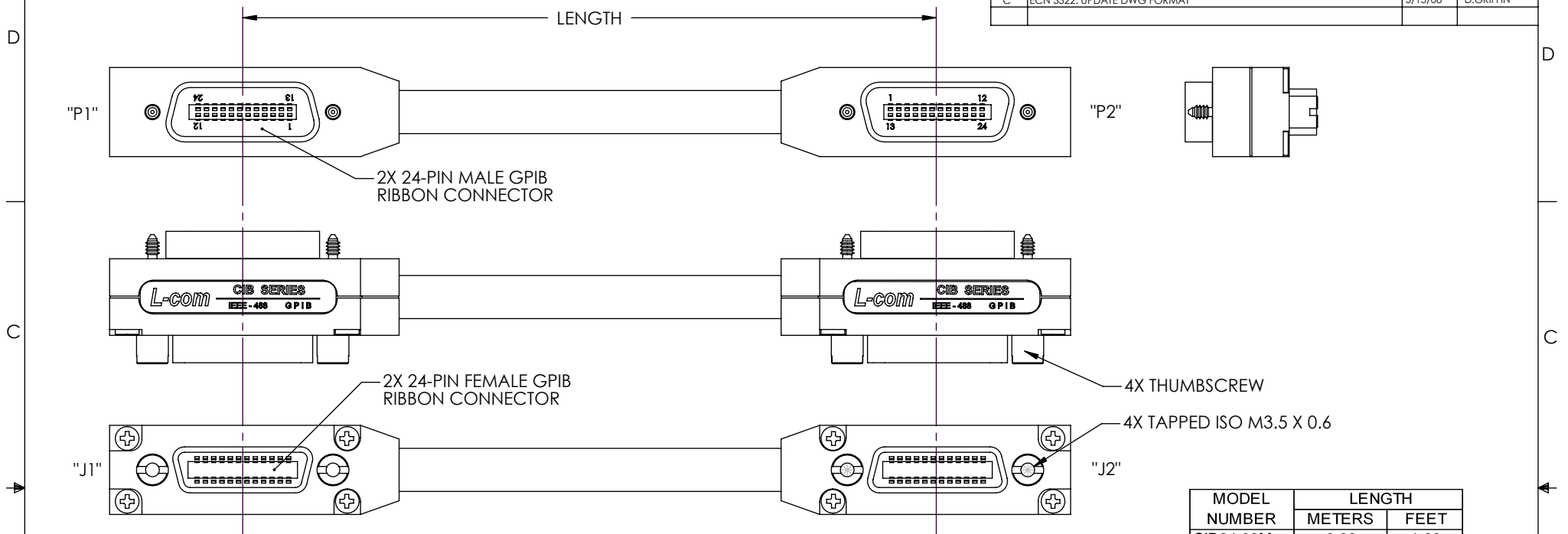


8 7 6 5 4 3 2 1

THE INFORMATION CONTAINED IN THIS DRAWING IS THE SOLE PROPERTY OF L-COM, INC. ANY REPRODUCTION IN PART OR WHOLE WITHOUT THE WRITTEN PERMISSION OF L-COM, INC. IS PROHIBITED.

REVISIONS			
REV	DESCRIPTION	DATE	APPROVED
A	RELEASED FOR PRODUCTION	9/11/01	T CLARK
B	UP-DATED WIRING TABLE, REVISED DRAWING FORMAT (ECN# 1271)	12/26/02	T CLARK
C	ECN 3322: UPDATE DWG FORMAT	5/13/08	D.GRIFFIN



MODEL NUMBER	LENGTH	
	METERS	FEET
CIB24-03M	0.33	1.08
CIB24-05M	0.50	1.64
CIB24-1M	1.0	3.28
CIB24-2M	2.0	6.56
CIB24-2.5M	2.5	8.20
CIB24-3M	3.0	9.84
CIB24-4M	4.0	13.12
CIB24-5M	5.0	16.40
CIB24-6M	6.0	19.68
CIB24-8M	8.0	26.24
CIB24-10M	10.0	32.80
CIB24-12M	12.0	39.36
CIB24-15M	15.0	49.20
CIB24-18M	18.0	59.04

SPECIFICATIONS:
MEETS REQUIREMENTS OF ANSI/IEEE STD 488.1-1987.

MATERIALS:
CABLE: U.L. STYLE 2464, TWELVE TWISTED PAIRS 26AWG STRANDED COPPER, FOUR DATA PAIRS WITHIN DOUBLE SHIELD ALUMINIZED POLYESTER FOIL PLUS BRAIDED COPPER DRAIN WIRE, AND EIGHT CONTROL PAIRS. OVERALL DOUBLE SHIELD ALUMINIZED POLYESTER FOIL PLUS BRAIDED COPPER WITH DRAIN WIRE. GRAY PVC JACKET.

CONNECTOR HOUSINGS AND SHELLS: DIE-CAST ALUMINUM ALLOY, NICKEL PLATED.
CONNECTOR INSULATORS: GLASS-FILLED PBT (BLUE), UL94V-0
CONNECTOR CONTACTS: COPPER ALLOY, 30 MICROINCHES GOLD OVER NICKEL
THUMBSCREWS: ISO M3.5 X 0.6, STEEL, BLACK OXIDE FINISH

ENVIRONMENTAL:
OPERATING TEMPERATURE RANGE: -20°C TO + 80°C

CABLE ASSEMBLY SHALL BE TESTED FOR CONTINUITY INDIVIDUALLY PACKAGE IN A POLYBAG

RoHS Compliant ✓


UNLESS OTHERWISE SPECIFIED, DIMENSIONS ARE IN INCHES [mm] OVERALL CABLE LENGTH TOLERANCE: ≤12 [305] = +1 [25] / -0 >12 [305] ≤60 [1524] = +2[51] / -0 >60 [1524] ≤120 [3048] = +4 / -0 >120 [3048] ≤300 [7620] = +6 / -0 >300 [7620] = +5% / -0% ALL OTHER DIMENSIONAL TOLERANCES: .X = .3 .XX = .15 PROJECTION 	APPROVALS	DATE	 45 BEECHWOOD DRIVE NORTH ANDOVER, MA 01845	
	DRAWN BY TJC	8/16/01		
	CHECKED BY CM	8/22/01	CATEGORY	
	APPROVED BY RC	9/10/01	PRODUCT DESCRIPTION	
CONFIGURATION DETAILS OF UNDIMENSIONED FEATURES MAY VARY			PREMIUM IEEE-488 CABLE ASSEMBLY	
COLOR VARIATIONS MAY OCCUR			SIZE A	FSCM NO. 43321
			DWG. NO. CIB24	REV. C
			SCALE: NONE	CAD FILE: CIB24.SLDRW
			SHEET 1 OF 2	

8 7 6 5 4 3 2 1

THE INFORMATION CONTAINED IN THIS DRAWING IS THE SOLE
PROPERTY OF L-COM, INC.. ANY REPRODUCTION IN PART OR WHOLE
WITHOUT THE WRITTEN PERMISSION OF L-COM, INC. IS PROHIBITED.

WIRING TABLE			
PAIR NUMBER	J1/P1	J2/P2	FUNCTION
DATA GROUP IN INNER SHIELD			
1	1	1	DATA LINE DIO1
	14	14	DATA LINE DIO2
2	2	2	DATA LINE DIO3
	3	3	DATA LINE DIO4
3	4	4	DATA LINE DIO5
	13	13	DATA LINE DIO6
4	15	15	DATA LINE DIO7
	16	16	DATA LINE DIO8
CONTROL GROUP BETWEEN INNER AND OVERALL SHIELDS			
5	5	5	EOI
	24	24	EOI RETURN
6	6	6	DAV
	18	18	DAV RETURN
7	7	7	NRFD
	19	19	NRDF RETURN
8	8	8	NDAC
	20	20	NDAC RETURN
9	9	9	IFC
	21	21	IFC RETURN
10	10	10	SRQ
	22	22	SRQ RETURN
11	11	11	ATN
	23	23	ATN RETURN
12	17	17	REN
	24	24	REN RETURN
INNER SHIELD	24	24	INNER SHIELD
OVERALL SHIELD	12 & SHELL	12 & SHELL	OVERALL SHIELD

CABLE CONSTRUCTION COMPLIES WITH L-COM
SPECIFICATION CIB-CS1.

		45 BEECHWOOD DRIVE NORTH ANDOVER, MA 01845	
CATEGORY		IEEE-488 GPIB	
PRODUCT DESCRIPTION		PREMIUM IEEE 488 CABLE ASSEMBLY	
SIZE A	FSCM NO. 43321	DWG. NO. CIB24	REV. C
SCALE: NONE		CAD FILE: CIB24.SLDDRW	
		SHEET 2 OF 2	