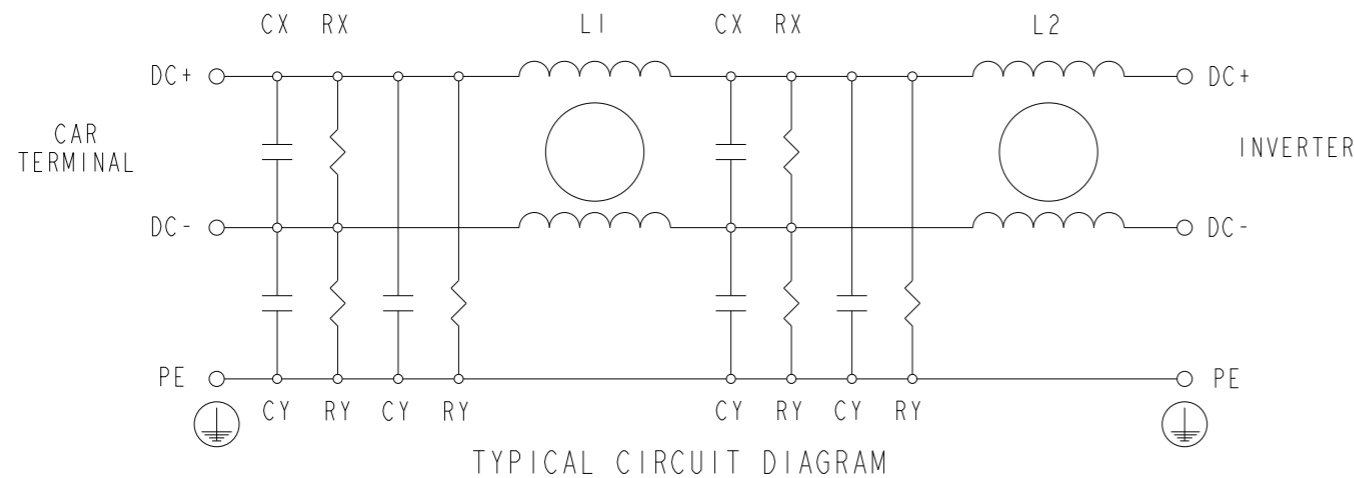


REVISIONS

P	LTR	DESCRIPTION	DATE	DWN	APVD
	A	RELEASE TO PRODUCTION	04MAY2023	DM	CB



TYPICAL INSERTION LOSS
COMMON MODE 50/50Ω; DIFFERENTIAL MODE 50/50Ω

1600 EVX A D									
FREQUENCY (MHz)	0.01	0.05	0.15	0.5	1	3	5	10	30
COMMON MODE	10	18	40	59	52	44	40	34	43
DIFFERENTIAL MODE	25	38	47	48	44	44	44	42	44

SAFETY ORGANIZATIONS

THIS FILTER WILL BE FORMALLY RECOGNIZED, CERTIFIED OR APPROVED BY THE LISTED AGENCY. THEREFORE, ALL TEST/REQUIREMENTS SPECIFIED IN THE LATEST REVISION OF THE FOLLOWING AGENCY STANDARDS WILL BE MET:

UL RECOGNIZED AS PER
UL 60939-3 AND CSA22.2 No 8 1600A / 500VDC / 55°C

OPERATING SPECIFICATION

LINE CURRENT/VOLTAGE: 1600A, 500VDC

OVERLOAD CAPABILITY: 135% RATED CURRENT FOR 15 MINUTES

OPERATING AMBIENT TEMPERATURE RANGE @ RATED CURRENT: -40°C TO +55°C

IN AN AMBIENT, T_a, HIGHER THAN 55°C, THE MAXIMUM OPERATING CURRENT, I_o, IS AS FOLLOWS:

$$I_o = I_r \sqrt{\frac{85 - T_a}{55}}$$

RELIABILITY SPECIFICATIONS

STORAGE TEMPERATURE: -40°C TO +100°C

HUMIDITY: 21 DAYS @ 40°C AND 95% RH

TEST SPECIFICATIONS

INDUCTANCE, NOMINAL: 0.0188mH

CAPACITANCE @ 1kHz, 0.250VAC MAX, 25°C +/-1°C

LINE TO GROUND, NOMINAL: 2000nF +/-20%

LINE TO LINE, NOMINAL: 6.6µF +/-20%

DISCHARGE RESISTOR

LINE TO GROUND: 3.3MΩ 2W

LINE TO LINE : 5.0MΩ 2W

IR (NO DISCHARGE RESISTOR) 20°C, 50% RH AND 100VDC, MIN: 6GΩ

HIPOT RATING (ONE MINUTE)

LINE TO GROUND: 2500 VDC FOR 2 SECONDS

LINE TO LINE: 2000 VDC FOR 2 SECONDS

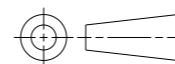
FILTER APPROVAL

THE BEST WAY TO SELECT AND QUALIFY A FILTER IS FOR YOUR ENGINEERING TO TEST THE UNIT IN YOUR EQUIPMENT.

TE PN	CATALOG NO.	Y CAPACITANCE (nF)
2-2443552-4	1600 EVX A D	2000

THIS DRAWING IS A CONTROLLED DOCUMENT.

DIMENSIONS:
mm



TOLERANCES UNLESS OTHERWISE SPECIFIED:
0 PLC ±-
1 PLC ±0.1
2 PLC ±0.01
3 PLC ±0.001
4 PLC ±0.0001
ANGLES ±-

MATERIAL
-

FINISH
-

DWN 10JAN2023

CHK C.BOLLE

25APR2023

L.RAJ

APVD 25APR2023

L.RAJ

PRODUCT SPEC

-

APPLICATION SPEC

-

WEIGHT

-

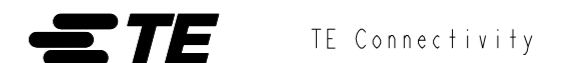
CUSTOMER DRAWING

NAME
1600 EVX A D
HIGH CURRENT DC EMI FILTER
500V 1600A

SIZE CAGE CODE DRAWING NO RESTRICTED TO

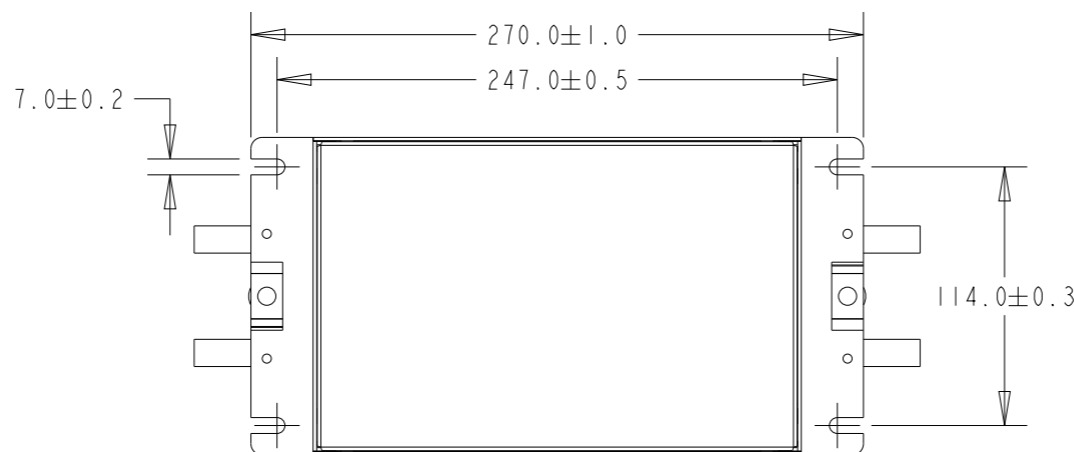
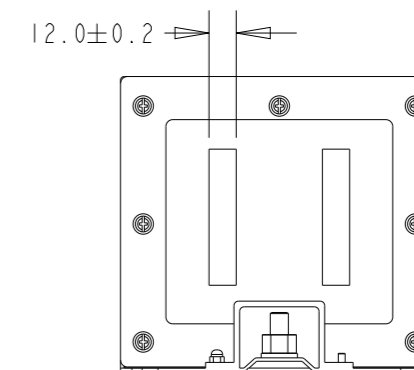
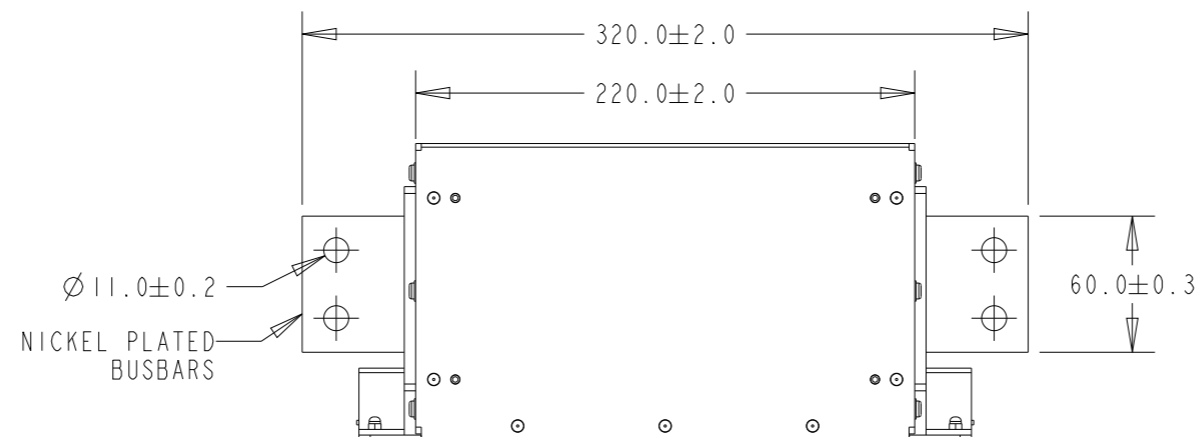
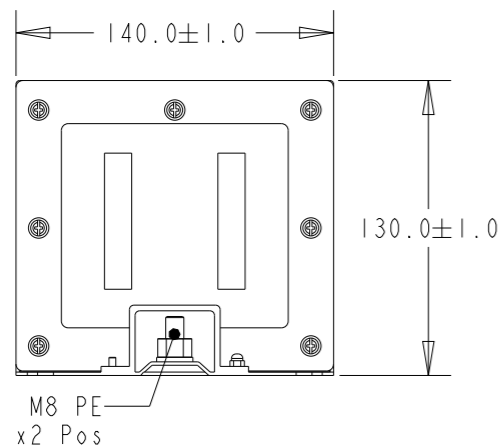
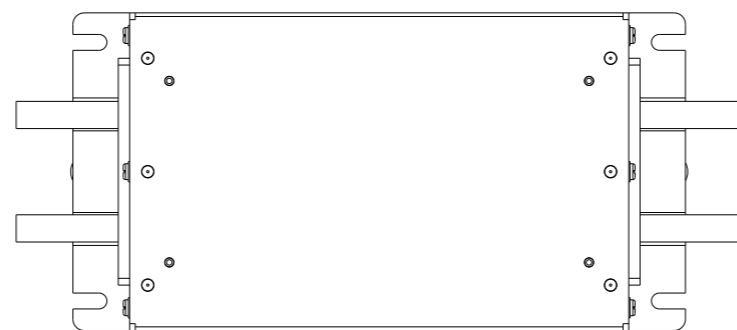
A3 00779 C=2-2443552-4 -

SCALE 1:6 SHEET 1 OF 2 REV A



REVISIONS


P	LTR	DESCRIPTION	DATE	DWN	APVD
		SEE SHEET 1			



NOTE 1 GROUND CONNECTIONS:
M8 GROUND NUTS TYP. TORQUE (Nm): 7
REMOVE PLASTIC COVER. MAKE CONNECTION. REPLACE PLASTIC COVER.

NOTE 2 INPUT OUTPUT CONNECTION BUSBAR:
CONNECTION METHOD: SCREW CONNECTION M11 FASTENER.

THE ABOVE DATA IS FOR GUIDANCE/REFERENCE ONLY.

THIS DRAWING IS A CONTROLLED DOCUMENT.		DWN C. BOLLE	10 JAN 2023	 TE Connectivity													
DIMENSIONS: mm		CHK L. RAJ	25 APR 2023														
TOLERANCES UNLESS OTHERWISE SPECIFIED:		APVD L. RAJ	25 APR 2023	NAME 1600 EVX A D HIGH CURRENT DC EMI FILTER 500V 1600A													
<table border="0"> <tr> <td>0 PLC</td> <td>±-</td> </tr> <tr> <td>1 PLC</td> <td>±0.1</td> </tr> <tr> <td>2 PLC</td> <td>±0.01</td> </tr> <tr> <td>3 PLC</td> <td>±0.001</td> </tr> <tr> <td>4 PLC</td> <td>±0.0001</td> </tr> <tr> <td>ANGLES</td> <td>±-</td> </tr> </table>		0 PLC	±-	1 PLC	±0.1	2 PLC	±0.01	3 PLC	±0.001	4 PLC	±0.0001	ANGLES	±-	PRODUCT SPEC -		RESTRICTED TO -	
0 PLC	±-																
1 PLC	±0.1																
2 PLC	±0.01																
3 PLC	±0.001																
4 PLC	±0.0001																
ANGLES	±-																
MATERIAL -		APPLICATION SPEC -		SIZE A3	CAGE CODE 00779												
FINISH -		WEIGHT -		DRAWING NO C-2-2443552-4													
CUSTOMER DRAWING				SCALE 1:6	SHEET 2 OF 2												
				REV A													