

Actuator

704.084.2

Distribution by
DigiKey**DigiKey**<https://digikey.eao.com/p/704.084.2>

Your product:



704.084.2 Actuator

FRONT

Front bezel colour:	Grey
Front dimension:	Ø 40 mm
Front bezel material:	Plastic

MOUNTING

Design:	raised
---------	--------

OPERATING-/INDICATION PART

Lens colour:	Red
Lens material:	Plastic
Lens optics:	opaque
Lens illumination:	illuminative
Lens shape:	mushroom-head
Illumination colour:	Red

MECHANICAL CHARACTERISTIC

Switching action:	Momentary
Mechanical lifetime:	≤3 Mio. cycles of operation
Weight:	0.044 kg
Terminal:	Screw terminal

OTHER

max. number of switching elements:

3

Hints:

Max. 3 switching elements can be clipped on

Short Description:

Actuator, Ø 40 mm, mushroom-head, illuminative, Red, Plastic, opaque, Grey, Plastic, Momentary, Screw terminal, Red

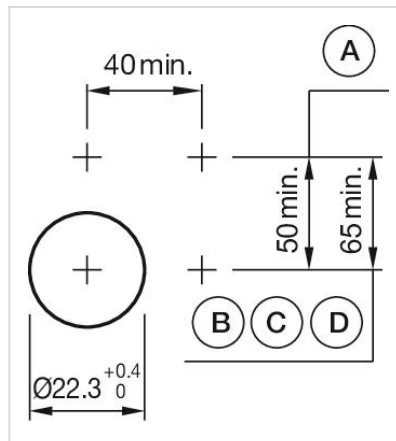
Housing colour:

Grey

Housing material:

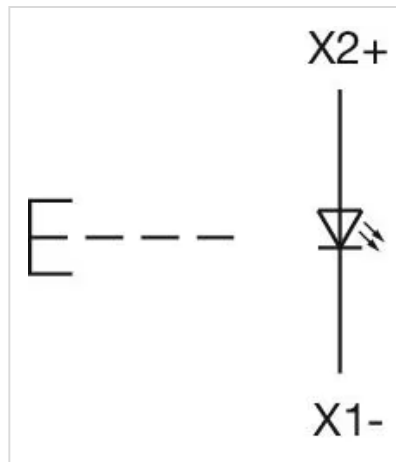
Plastic

Mounting cut-outs:

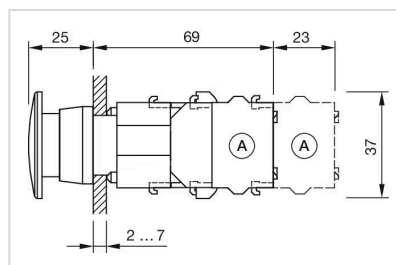


A = Screw terminal
B = Push-in terminal (PIT)
C = Plug-in terminal 6.3 mm x 0.8 mm
D = Double plug-in terminal 6.3 mm x 0.8 mm

Wiring diagrams:



Dimension drawings:



A = Screw terminal